

SPECIAL ISSUE

Kenya Gazette Supplement No. 48 (National Assembly Bills No. 17)



**NATIONAL COUNCIL FOR
LAW REPORTING
LIBRARY**

REPUBLIC OF KENYA

KENYA GAZETTE SUPPLEMENT

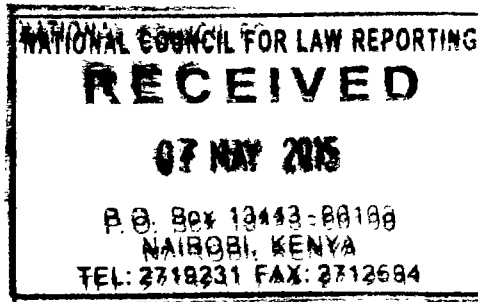
NATIONAL ASSEMBLY BILLS, 2015

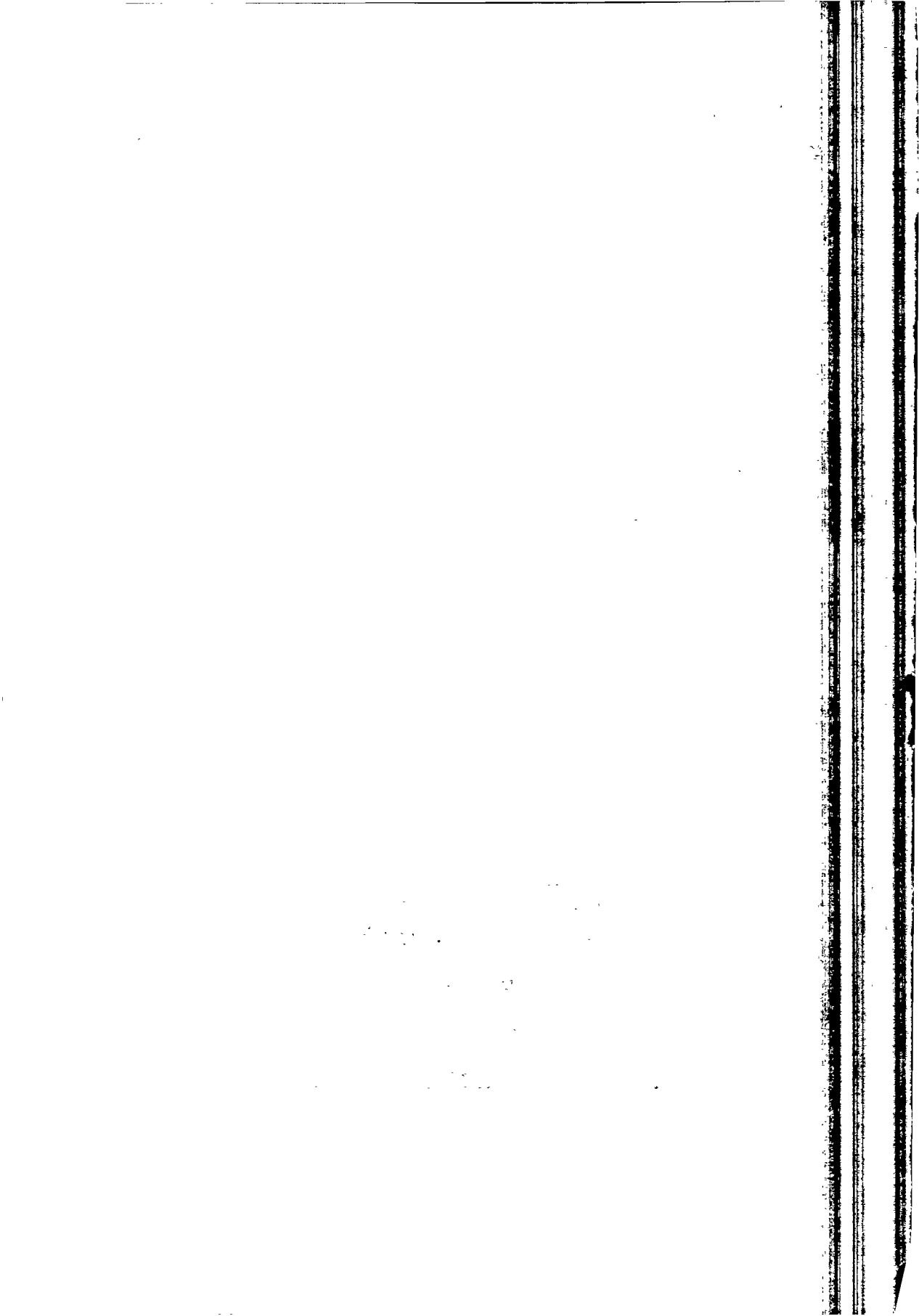
NAIROBI, 24th April, 2015

CONTENT

Bill for Introduction into the National Assembly —

	PAGE
The Agriculture, Fisheries and Food Authority (Amendment) Bill, 2015	789





**THE AGRICULTURE, FISHERIES AND FOOD
AUTHORITY (AMENDMENT) BILL, 2015**

A Bill for

**AN ACT of Parliament to amend the Agriculture,
Fisheries and Food Authority Act and for
connected purposes**

ENACTED by the Parliament of Kenya, as follows—

1. This Bill may be cited as the Agriculture, Fisheries and Food Authority (Amendment) Act, 2015.

Short title.

2. The Agriculture, Fisheries and Food Authority Act in this Act referred to as “the principal Act” is amended in section 2 by inserting the following words in their proper alphabetical sequence—

Amendment of
section 2 of Act
No.13 of 2013.

“manual transport of loads” means any transport in which the weight of the load is wholly borne by one worker;

“regular manual transport of loads” means any activity for which there is continuous manual transport of loads;

“child” has the meaning assigned to it under the Children’s Act.

No.8 of 2001

3. The Principal Act is amended by inserting the following new part, immediately after part VI—

Insertion of new part

**PART VIA—MANUAL TRANSPORT OF
AGRICULTURE LOADS**

Training, instructions
and medical
examinations

29A. (1) An employer who assigns to any person manual transport of agriculture loads shall, prior to such assignment ensure that the person has the following requirements—

- (a) adequate training or instructions by a qualified person on the manner in which such operations shall be carried out; and
- (b) a regular medical examination to determine fitness for the assignment.

(2) An employer who occasionally assigns manual transport of agriculture loads to any person, shall ensure that the person is given appropriate instructions on the manner in which such operations shall be carried out safely.

(3) An employer who contravenes the provisions of this section commits an offence and shall, on conviction, be liable to a fine not exceeding one hundred thousand shillings or to imprisonment for a term not exceeding six months or to both.

Technical equipment and packaging

29B. In order to facilitate manual transport of agriculture loads, appropriate technical and packaging equipment shall be provided by an employer.

Maximum Weight

29C. (1) The maximum permissible agricultural weight shall depend on the physiological characteristics, environmental conditions and the nature of the work to be done.

(2) The maximum permissible agricultural weight to be transported by an adult shall not exceed fifty kilograms.

(3) An employer who contravenes the provisions of this section commits an offence and shall, on conviction, be liable to a fine not exceeding one hundred thousand shillings or to imprisonment for a term not exceeding six months or to both.

Female workers

29D. (1) The manual transport of agriculture loads shall not be assigned to a woman during pregnancy or the maternity period, if in the opinion of a qualified physician, such work is likely to impair her health or that of her child.

(2) An employer who contravenes the provisions of this section commits an offence and shall, on conviction, be liable to a fine not exceeding one hundred thousand shillings or to imprisonment for a term not exceeding six months or to both.