

**Executive Condominium Housing Scheme (Appointment of Developers)
Notification 1998**

Table of Contents

Enacting Formula

1 Citation and commencement

**2 Appointment of developers and specification of lands to be
developed**

FIRST SCHEDULE

SECOND SCHEDULE

No. S 30

EXECUTIVE CONDOMINIUM HOUSING SCHEME ACT (CHAPTER 99A)

**EXECUTIVE CONDOMINIUM HOUSING SCHEME (APPOINTMENT OF
DEVELOPERS) NOTIFICATION 1998**

In exercise of the powers conferred by section 4 of the Executive Condominium Housing Scheme Act, the Minister for National Development hereby makes the following Notification:

Citation and commencement

1. This Notification may be cited as the Executive Condominium Housing Scheme (Appointment of Developers) Notification 1998 and shall come into operation on 20th January 1998.

Appointment of developers and specification of lands to be developed

2.—(1) The Minister hereby appoints the developers set out in the first column of the

First Schedule to develop, under the executive condominium scheme, the parcels of land specified in the second column thereof and to sell the housing accommodation so developed.

(2) For the purposes of the First Schedule —

- (a) “Plan” means a plan set out in the Second Schedule; and
- (b) a plan referred to by a number means the plan so numbered in the Second Schedule.

FIRST SCHEDULE

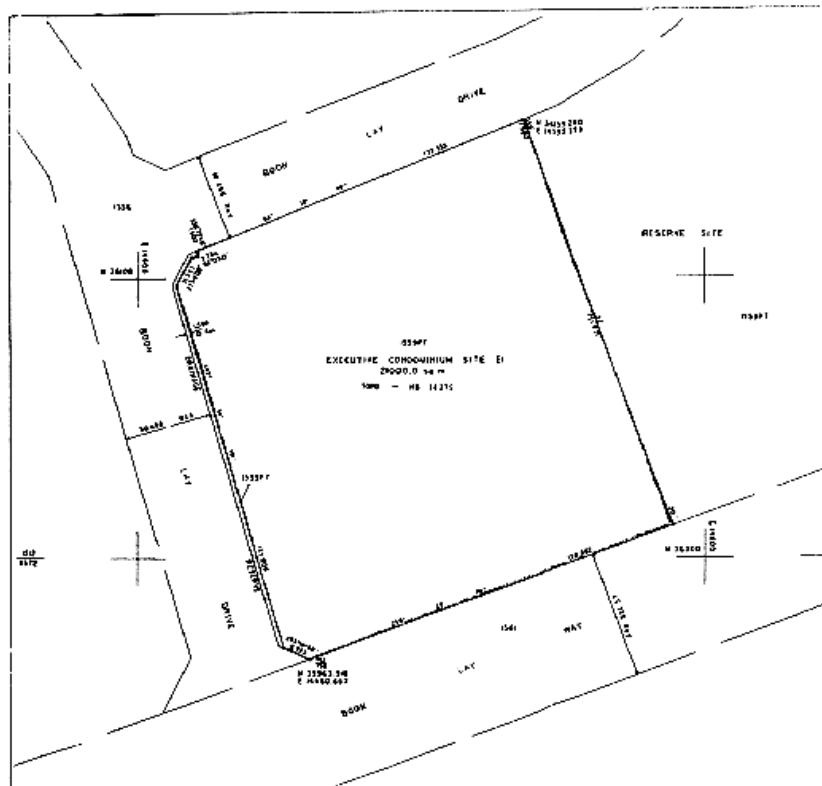
Paragraph 2

<i>First column</i>	<i>Second column</i>
(1) Boon Lay Executive Condominiums Pte Ltd	Lot 15959 pt Mk 6 (Peng Kang) at Jurong West Town containing an estimated area of 21,000.0 square metres (subject to survey) and delineated in the Plan 1.
(2) Woodsvale Land Pte Ltd	Lot 2750pt and 2414pt Mk 13 (Sembawang) at Woodlands Town containing an estimated area of 34,000.0 square metres (subject to survey) and delineated in Plan 2.
(3) Jurong West Land Pte Ltd	Lot 269pt, 268pt, 244pt, 243pt, 645pt, 697pt and 637pt Mk 9 at Jurong West Town containing an estimated area of 36,925.3 square metres (subject to survey) and delineated in Plan 3.
(4) Cairns Garden Development Pte Ltd	Lot 4095pt Mk 22 at Hougang Town containing an estimated area of 22,366.0 square metres (subject to survey) and delineated in Plan 4.
(5) Upnorth Development Pte Ltd	Lot 2414pt, 2446pt, 3347pt, 2447pt and 2413pt Mk 13 at Woodlands Town containing an estimated area of 33,000.0 square metres (subject to survey) and delineated in Plan 5.

SECOND SCHEDULE

Paragraph 2(2)

EXECUTIVE CONDOMINIUM HOUSING SCHEME (APPOINTMENT OF DEVELOPERS) NOTIFICATION



EXECUTIVE CONDOMINIUM HOUSING SCHEME (APPOINTMENT OF DEVELOPERS) NOTIFICATION