

Currency Notes and Coins (Consolidation) Notification

Table of Contents

Enacting Formula

THE SCHEDULE

Legislative History

CURRENCY ACT (CHAPTER 69, SECTION 17(5))

CURRENCY NOTES AND COINS (CONSOLIDATION) NOTIFICATION

N 11

G.N. No. S 278/2003

REVISED EDITION 2004

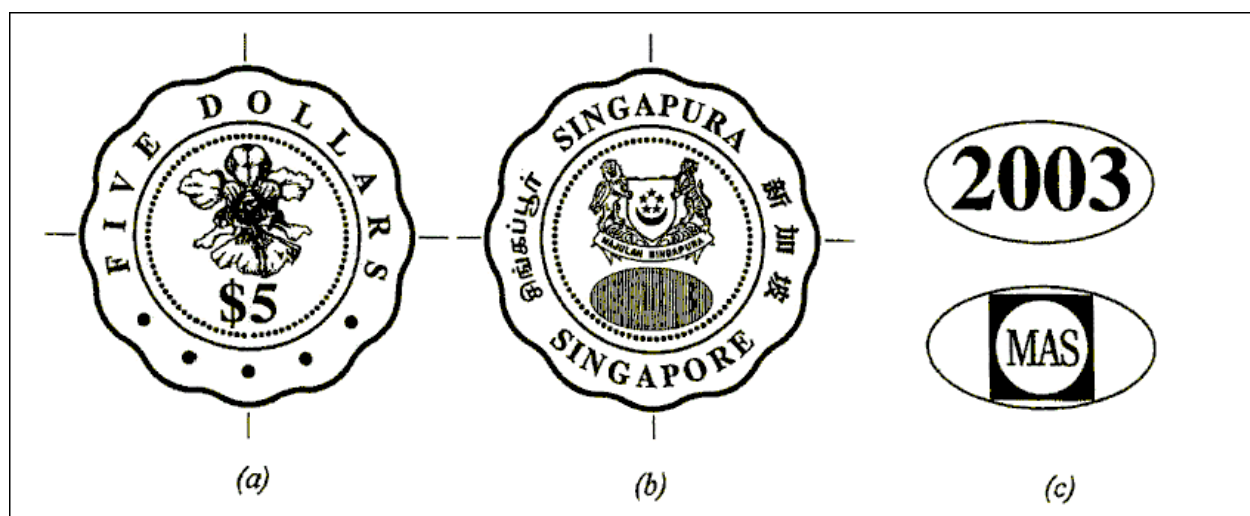
(31st January 2003)

The denomination and characteristics of the coins issued by the Monetary Authority of Singapore, are as shown in the Schedule.

THE SCHEDULE

DESCRIPTION OF THE \$5 UNCIRCULATED COIN ISSUED ON 3RD JANUARY 2003								
Denomination	Metal	Standard Weight	Standard Diameter	Standard Thickness	Shape	Edge	Design of Obverse	Design of Reverse
5 Dollars	Outer Ring — Copper 75% Nickel 25%	6.70 g ± 0.17 g	23.30 mm 0.125 mm	2.30 mm 0.152 mm	Scallop	Plain	The Singapore Arms in the centre with the latent image below it. The	The flower, Vanda Miss Joaquim in the centre with the

	Core — Copper 92% Aluminium 6% Nickel 2%					latent image bears the year- date and MAS logo. A ring of beads surrounds the Singapore Arms with the word “SINGAPORE” in the 4 official languages around the circumference of the coin.	figures “\$5” below it. A ring of beads surrounds the flower with the words “FIVE DOLLARS” and 5 dots at the outer ring of the coin.
--	---	--	--	--	--	---	---

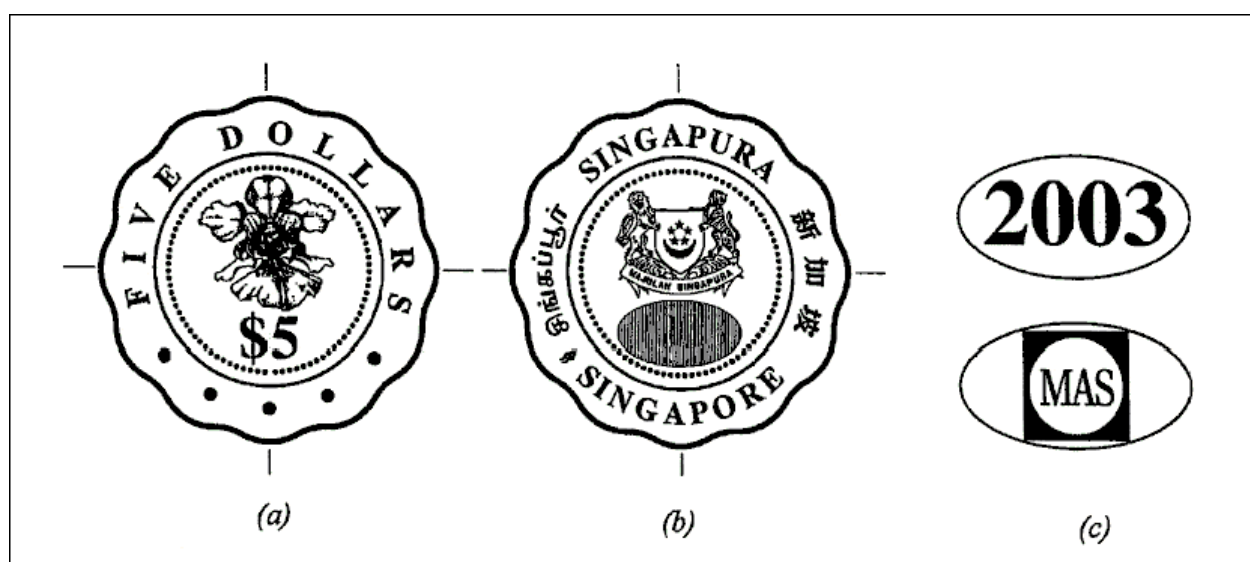


(a) Reverse Design of the \$5 Uncirculated Coin
(b) Obverse Design of the \$5 Uncirculated Coin
(c) Latent Image.

DESCRIPTION OF THE \$5 SILVER PROOF COIN ISSUED ON 12TH JUNE 2003								
Denomination	Metal	Standard Weight	Standard Diameter	Standard Thickness	Shape	Edge	Design of Obverse	Design of Reverse
5 Dollar	Silver 92.5% Copper 7.5%	8.25 g 0.20 g	23.30 mm 0.15 mm	2.30 mm ± 0.20 mm	Scallop	Plain	The Singapore Arms in the centre with the latent image below it. The latent image bears the year-date and MAS logo. A ring of beads surrounds	The flower, Vanda Miss Joaquim in the centre with the figures “\$5” below it. A ring of beads surrounds

						the Singapore Arms with the word “SINGAPORE” in the 4 official languages around the circumference of the coin. The position of the mintmark is at 7 o’ clock of the coin.	the flower with the words “FIVE DOLLARS” and 5 dots at the outer ring of the coin.
--	--	--	--	--	--	---	--

[S 278/2003 — 9.6.2003]

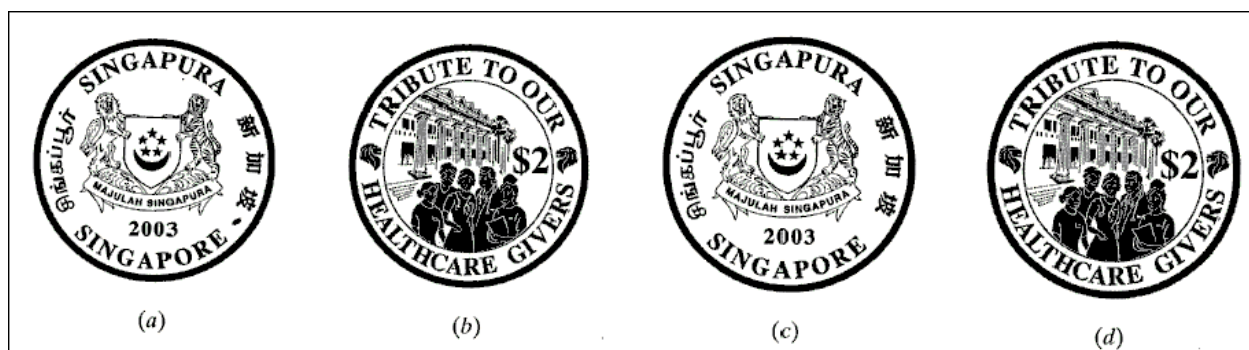


(a) Reverse Design of the \$5 Silver Proof Coin
(b) Obverse Design of the \$5 Silver Proof Coin
(c) Latent Image.

DESCRIPTION OF THE TRIBUTE TO OUR HEALTHCARE GIVERS \$2 COMMEMORATIVE COINS ISSUED ON 22ND JULY 2003								
Denomination	Metal	Standard Weight	Standard Diameter	Standard Thickness	Shape	Edge	Design of Obverse	Design of Reverse
2 Dollars	999 Fine Silver	20.00 g \pm 0.20 g	38.70 mm \pm 0.15 mm	2.30 mm \pm 0.20 mm	Round	Milled and bearing the words “MONETARY AUTHORITY OF SINGAPORE” and lion	The Singapore Arms in the centre with the year-date “2003” below it and the word “SINGAPORE” in the 4 official	Healthcare givers in Singapore featured with the use of stylised symbols of healthcare

						symbol.	languages around the circumference of the coin. The position of the mintmark is at 5 o'clock of the coin.	attendant, surgeon, doctor, virologist and nurse. In the background is the Ministry of Health Building, which symbolises the leadership of the Ministry in this health crisis. The denomination “\$2” is on the right-hand side of the building. Embracing the design are the words
2 Dollars	75% Copper 25% Nickel	28.00 g \pm 0.40 g	40.70 mm \pm 0.15 mm	3.05 mm \pm 0.20 mm	Round			“TRIBUTE TO OUR HEALTH CARE GIVERS” – an expression of the respect and admiration of all Singaporeans for this group of heroes in combating Severe Acute Respiratory Syndrome (SARS).

[S 279/2003 — 9.6.2003]



(a) Obverse Design of \$2 Silver Proof Coin.

(b) Reverse Design of \$2 Silver Proof Coin.

(c) Obverse Design of \$2 Uncirculated Cupro-Nickel Proof-like Coin.

(d) Reverse Design of \$2 Uncirculated Cupro-Nickel Proof-like Coin.

DESCRIPTION OF THE BASE METAL PROOF COINS ISSUED ON 5TH SEPTEMBER 2003								
Denomination	Metal	Standard Weight	Standard Diameter	Standard Thickness	Shape	Edge	Design of Obverse	Design of Reverse
5 Cents	Copper 92% Aluminium 6% Nickel 2%	1.56 g \pm 0.062 g	16.75 mm \pm 0.125 mm	1.22 mm \pm 0.152 mm	Round	Milled	The Singapore Arms in the centre with the year-date below it and the word "SINGAPORE" in the 4 official languages around the circumference of the coins. A ring of dashes surrounds the Singapore Arms on both the 10-cent and 50-cent coins. The \$1 coin has an octagonal frame along the circumference. The \$5 coin has a ring of beads surrounding the Singapore Arms with a latent image below it depicting the	The Fruit Salad Plant (<i>Monstera deliciosa</i>) in the centre with the figure "5" below it and the words "FIVE CENTS" above it.