

# Guidelines on the collection of structural aquaculture statistics

Supplement  
to the Programme for the  
World Census of Agriculture 2000



Food  
and  
Agriculture  
Organization  
of  
the  
United  
Nations

# Guidelines on the collection of structural aquaculture statistics

Supplement  
to the Programme for the  
World Census of Agriculture 2000

**K.J. Rana**

Fishery Information, Data and Statistics Unit  
FAO Fisheries Department

The designations employed and the presentation of material in this publication do not imply the expression of any opinion whatsoever on the part of the Food and Agriculture Organization of the United Nations concerning the legal status of any country, territory, city or area or of its authorities, or concerning the delimitation of its frontiers or boundaries.

M-78  
ISBN 92-5-104054-0

All rights reserved. No part of this publication may be reproduced, stored in a retrieval system, or transmitted in any form or by any means, electronic, mechanical, photocopying or otherwise, without the prior permission of the copyright owner. Applications for such permission, with a statement of the purpose and extent of the reproduction, should be addressed to the Director, Information Division, Food and Agriculture Organization of the United Nations, Viale delle Terme di Caracalla, 00100 Rome, Italy.

© FAO 1997

## FOREWORD

The FAO has promoted the national Census of Agriculture since the 1950s. The next Programme for the World Census of Agriculture 2000 (WCA 2000) proposes only very few questions for non-agricultural activities, particularly for aquaculture. Given the increasing importance of aquaculture, particularly in Asia and the close link between aquaculture and agriculture, FAO is promoting the collection of structural and other data on the aquaculture sector as part of WCA 2000 Programme. The guidelines for aquaculture are provided in this Supplement.

The Supplement on Aquaculture is intended to assisted countries to improve their current surveys of aquaculture and to provide a framework for those countries intending to develop databases on aquaculture information. The supplement provides definitions, concepts, standards and guidelines for collecting internationally comparable data on aspects such as location and size of the farms, types of aquacultural activity, employment structure, resource use and other aquacultural inputs. Although the relevant sections of the main WCA 2000 Programme are annexed in this Supplement, the Supplement should be read in conjunction with the main programme.

L. Kabat  
Director, ESS

D. Ardill  
Chief, FIDI

## PREPARATION OF THIS DOCUMENT

This Supplement provides guidelines for countries which would like to expand the scope and coverage of their Census of Agriculture to include the collection of structural information on aquaculture. The Supplement was prepared by Dr K. J. Rana of FAO's Fishery Information, Data and Statistics Unit (FIDI) in collaboration with FAO's Statistics Division (ESSS) from working documents prepared by *Ms Virgilia T. Sulit*, SEAFDEC Aquaculture Department, Iloilo, Philippines.

Earlier drafts of this document were discussed with regional aquacultural and agricultural experts and at international meetings. FAO is grateful to all who have participated in producing this Supplement. Valuable advice and comments on the final draft were received from Mr David Ardill, Mr Odell Larson, Mr Jean Viseur, Dr Richard Grainger, Ms Virgilia Sulit, Dr Matthias Halwart and Mr Anton Immink.

This is the first version of this Supplement. FAO invites comments and suggestions in order to improve the second version.

Rana, K. J.

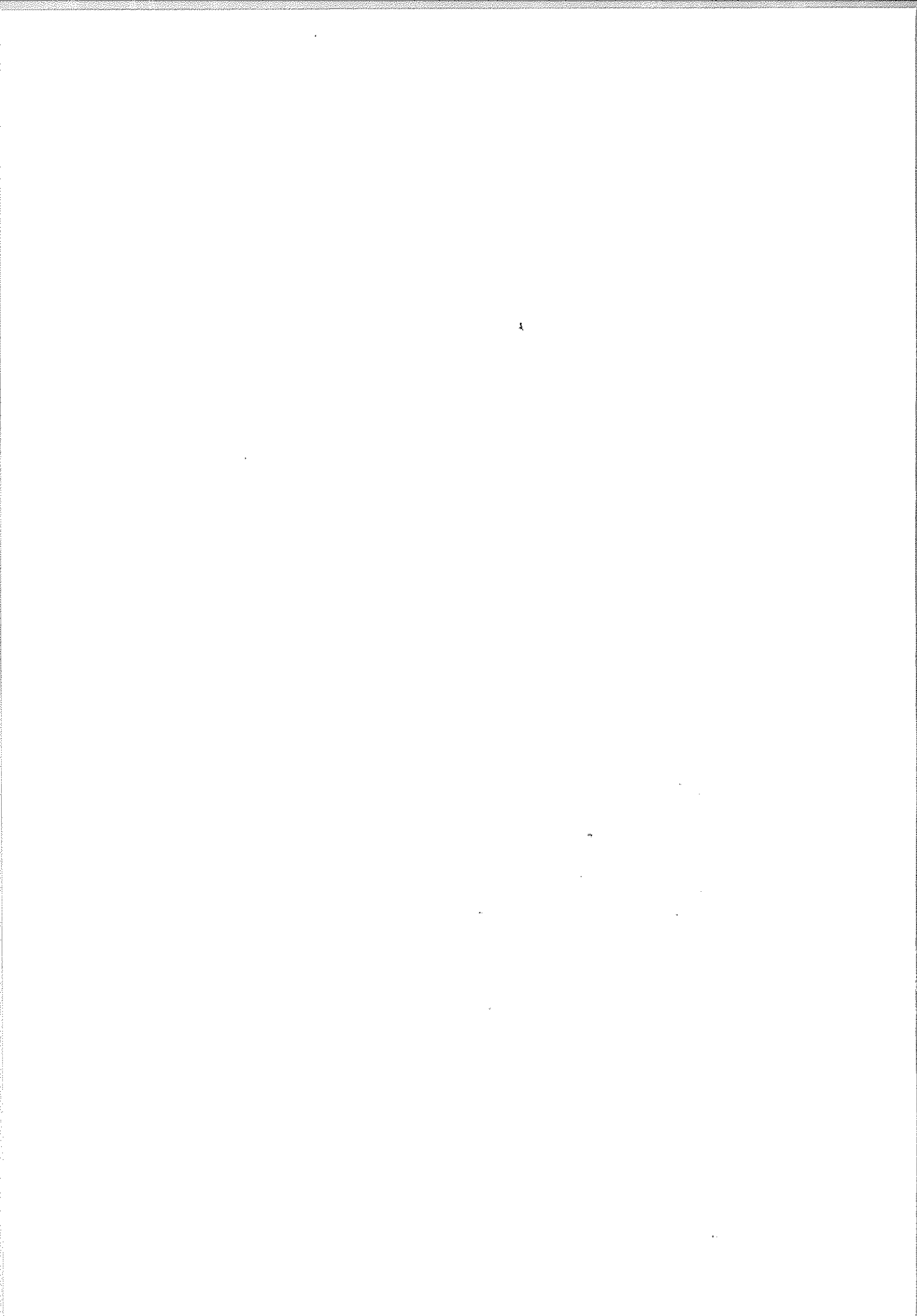
Guidelines on the collection of structural aquaculture statistics. Supplement to the Programme for the World Census of Agriculture 2000.

*FAO Statistical Development Series*. No. 5b. Rome, FAO. 1997.

56p.

### ABSTRACT

The Census of Agriculture is a large scale national statistical operation for collecting quantitative information on the structure of the countries food production sector. The new Programme for the World Census of Agriculture 2000 (WCA 2000 Programme) recommends extending the scope of the programme to include aquaculture. This Supplement on aquaculture is intended to assist countries to improve their current surveys of aquaculture and to provide a framework for those countries intending to develop databases on aquaculture information. Its four chapters provide background information on the need for the Supplement and definitions, concepts, standards and guidelines for collecting internationally comparable data on aspects such as location and size of the farms, types of aquacultural activity, employment structure, resource use and other aquacultural inputs. The items proposed for collection address issues related to natural resource utilization and sustainable aquaculture developmental issues. The Supplement also provides examples of summary tables which could be used to develop a questionnaire. Also included are relevant notes from the main WCA 2000 Programme and the species classification list for farmed aquatic species used by FAO.



## CONTENTS

	Page
<b>CHAPTER 1 INTRODUCTION</b>	
<b>The Need for Guidelines on Collecting Quantitative Structural Data on Aquaculture</b>	1
1.1 Background	1
1.2 Types of aquaculture activity under consideration for the Supplement on Aquaculture	2
1.3 Objectives	3
<b>CHAPTER 2 INTRODUCTION OF BASIC CONCEPTS AND METHODOLOGY</b>	
<b>Identification of Aquacultural Activity and Scope</b>	5
2.1 Identification of agricultural holdings conducting aquaculture activities	5
2.2 Definition of aquaculture	5
2.3 Definition of culture environment	6
2.4 Census scope	7
2.5 Training	7
2.6 Census frame	7
2.7 Role of women and children	8
<b>CHAPTER 3 PROPOSED CENSUS ITEMS FOR HOLDINGS CONDUCTING AQUACULTURE</b>	9
3.1 Introduction	9
Category 01 (Identification of aquacultural operation)	9
Category 02 (Employment)	10
Category 03 (Land and water use)	11
Category 04 (Purpose of aquaculture production)	14

预览已结束，完整报告链接和二维码如下：

[https://www.yunbaogao.cn/report/index/report?reportId=5\\_22412](https://www.yunbaogao.cn/report/index/report?reportId=5_22412)

