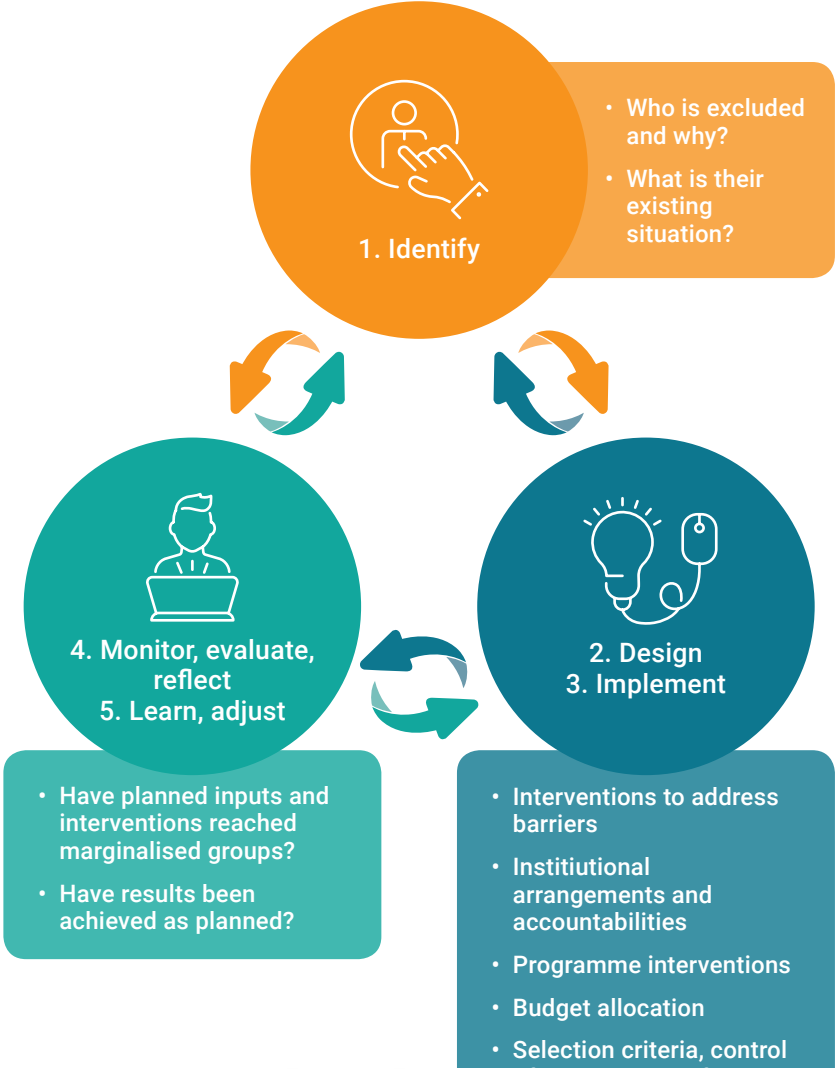


# GESI IN PRACTICE

## Steps for mainstreaming gender equality and social inclusion

Understanding who is excluded and why from the development process is a critical first step to designing gender responsive and socially inclusive interventions.



# PROGRAMMING IN PRACTICE

- Awareness and skills developed within partner institutions
- GESI analysis documented and interventions proposed to address inequalities
- GESI embedded within grant design mechanisms
- # of grants led by women and marginalised groups or those that represent them
- Pacific-based researchers and actors drive the research agenda
- We unpack the issue of 'research for who, by who?' and reflect the lived experiences of women and marginalised groups
- Research critiques gendered-dimensions of power structures and gender norms



# Governance for Resilient Development in the Pacific (GOV4RES) - Gender Equality

预览已结束，完整报告链接和二维码如下：

[https://www.yunbaogao.cn/report/index/report?reportId=5\\_31335](https://www.yunbaogao.cn/report/index/report?reportId=5_31335)

