

Marine Protected Areas in an ecosystem-based management context – the Wider Caribbean experience

UNEP's Caribbean Environment Programme

*Secretariat to the Cartagena Convention and its
Protocols on biodiversity (SPAW), land-based
pollution (LBS) and oil spills response*

*11th Global Meeting of the Regional Seas
Conventions and Action Plans
Bangkok, 5-8th October 2009*

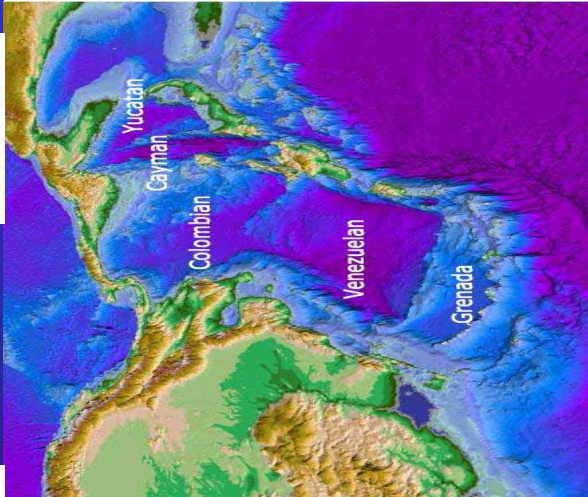


Alessandra Vanzella-Khoury
Programme Officer
UNEP-CAR/RCU
Kingston
Jamaica

www.cep.unep.org



The Wider Caribbean: a biogeographic opportunity for EBM and LME governance

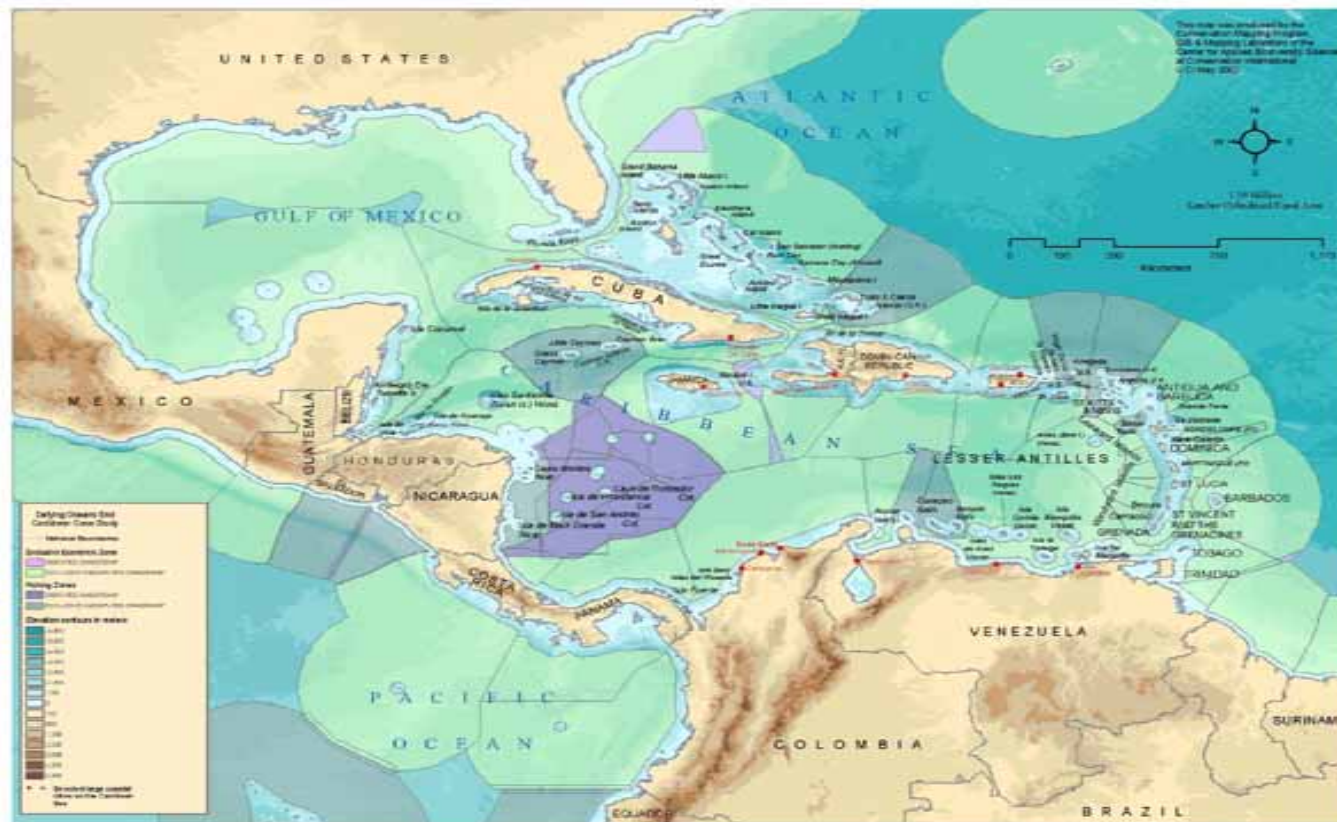


- 2.6 million Km²
- 38 countries & territories: diff political and legal systems, languages (16 SIDS, 19 territories, 13 land States)
- One Marine Biogeographic Province with several ecoregions
- Coastal tourism: a major force, lessons to be learned
- Land-based pollution and over-fishing major issues

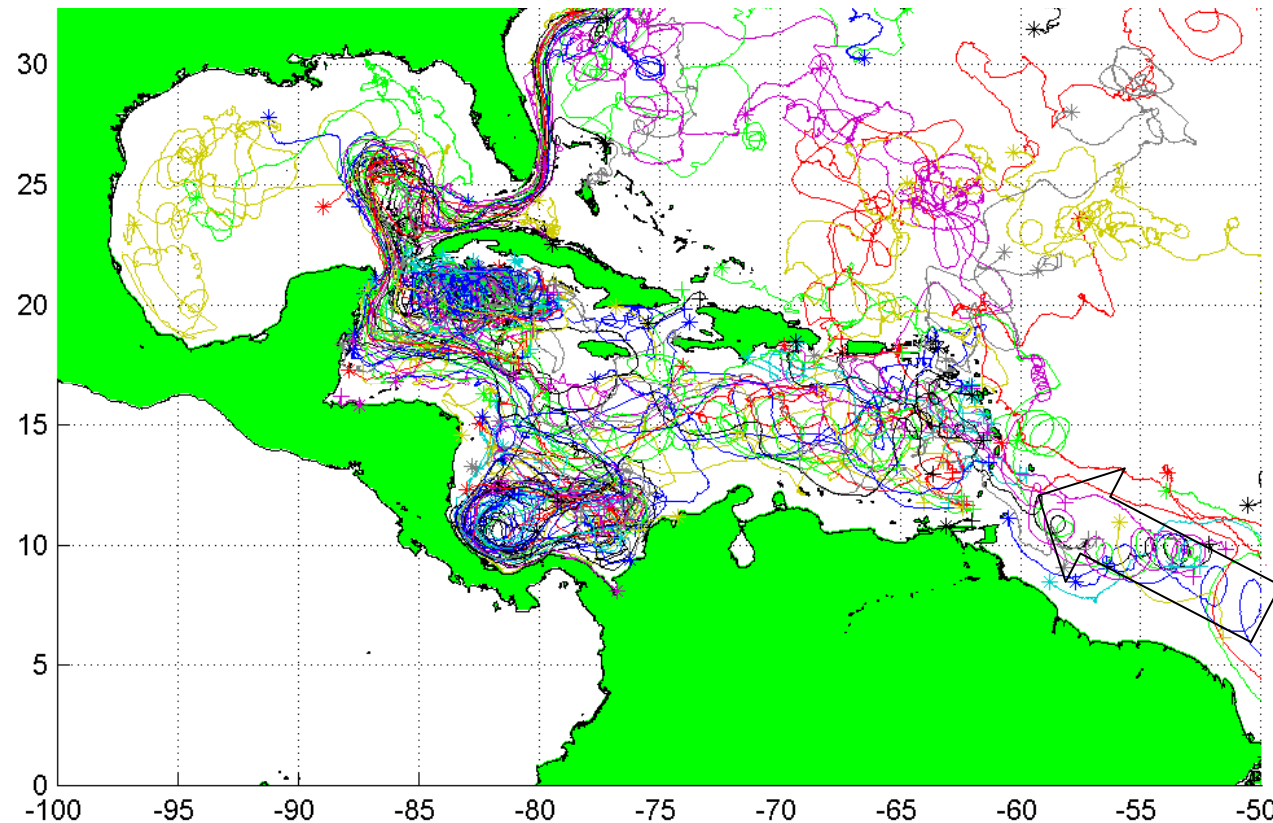


The Wider Caribbean Region (WCR)

- Almost no international waters



Oceanic circulation shaped by gyres and meanders largely due to coastal morphology and bottom relief



Current drifters (1998-2000)
Kevin Leaman (UM/RSMAS)

The Cartagena Convention and its Protocols

- an integrated approach -



Cartagena Convention

Adopted 1983

Entered into Force 1986

Oil Spills Protocol

Adopted 1983

Entered into Force 1986

Specially Protected Areas and Wildlife Protocol

Adopted 1990

Entered into Force 2000

Land-based Sources of Marine Pollution Protocol

Adopted 1999



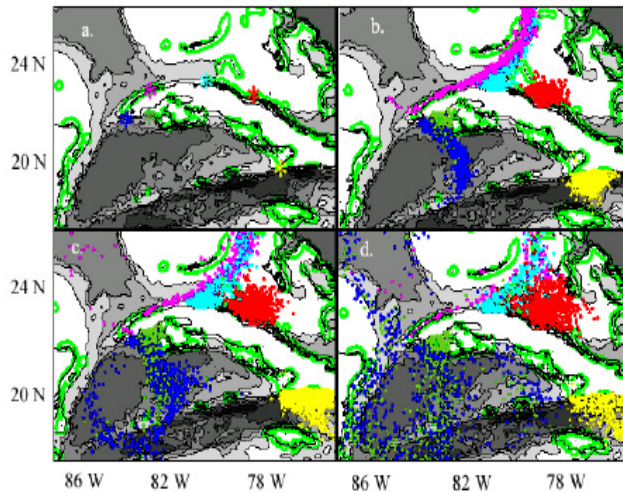
Emergency response
for oil spills (with IMO)

SPAW Biodiversity
subprogramme

Assessment and management
of marine pollution (AMEP)

Biological connectivity of marine populations

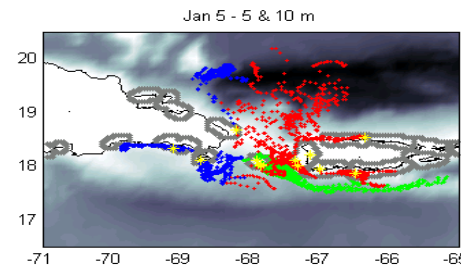
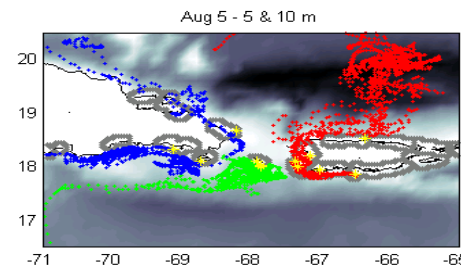
- Restricted
- The need for transboundary and ecoregional management of marine resources



Snapper larval dispersal (*Paris et al.* (2005))

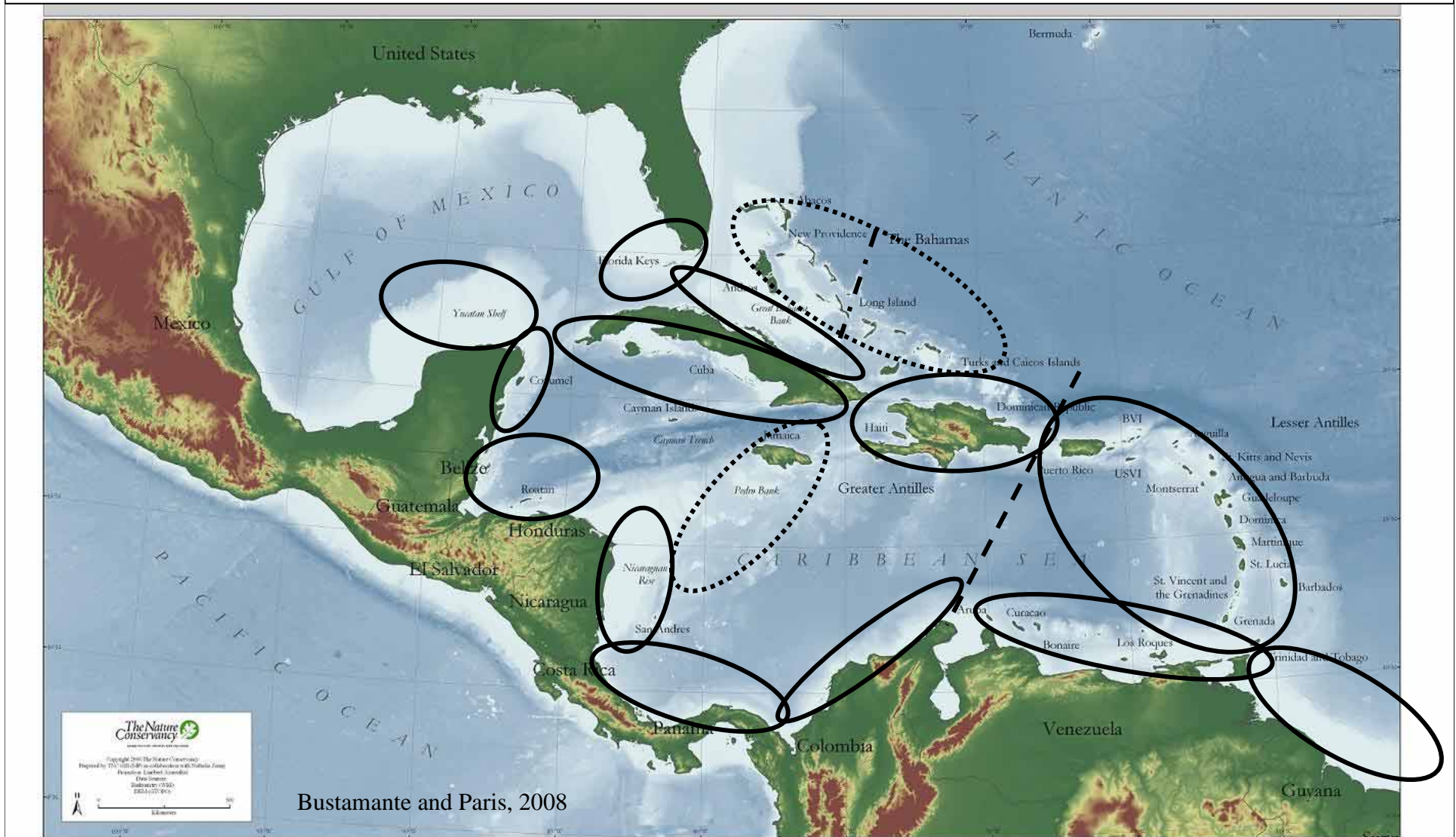


Mutually exclusive distribution of 9 nominal spp of gobies (*Collin, 2004*)



(*A. palmata*, Baums, Paris, Cherubin, 2006)

Restricted marine populations connectivity (fish larvae, gobies distribution and coral genetics)



https://www.yunbaogao.cn/report/index/report?reportId=5_14515

预览已结束，完整报告链接和二维码如下：



ne Protected Areas (MPAs)



- WCR coral reefs (~26000 km²)
- Over 300 MPAs
- 1/3 are highly threatened by overfishing, pollution, habitat alteration
- 80% outside MPAs
- Only 6% of MPAs considered effective

2006, at the GCFI Annual Meeting)

Burke and Maidens, 2004