

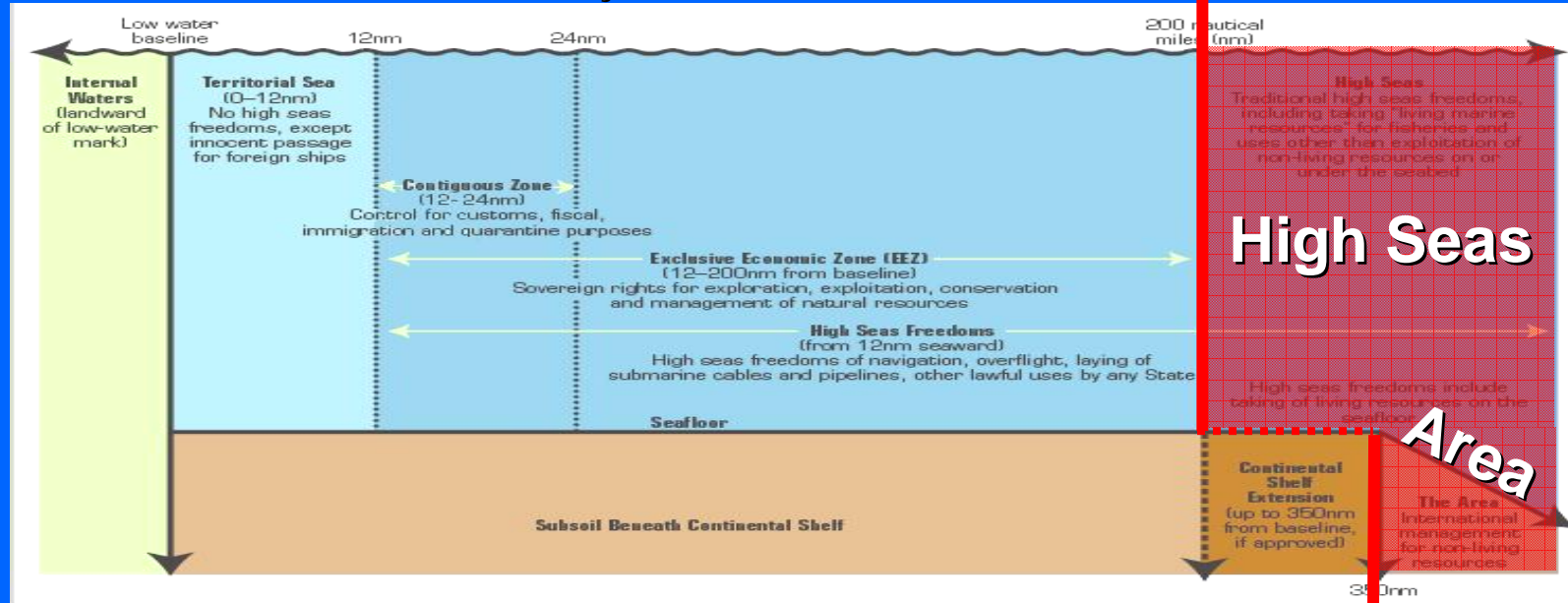


Overview of international governance and scientific issues regarding the high seas and deep-water ecosystems and biodiversity



The oceans have been divided by UNCLOS ...

Maritime zones, boundaries and ocean areas
within national jurisdiction



Size: approx. 1/3

approx. 2/3

Depth: shallow waters (<200m) : 10-15%
deep waters (>200m) : 85-90%

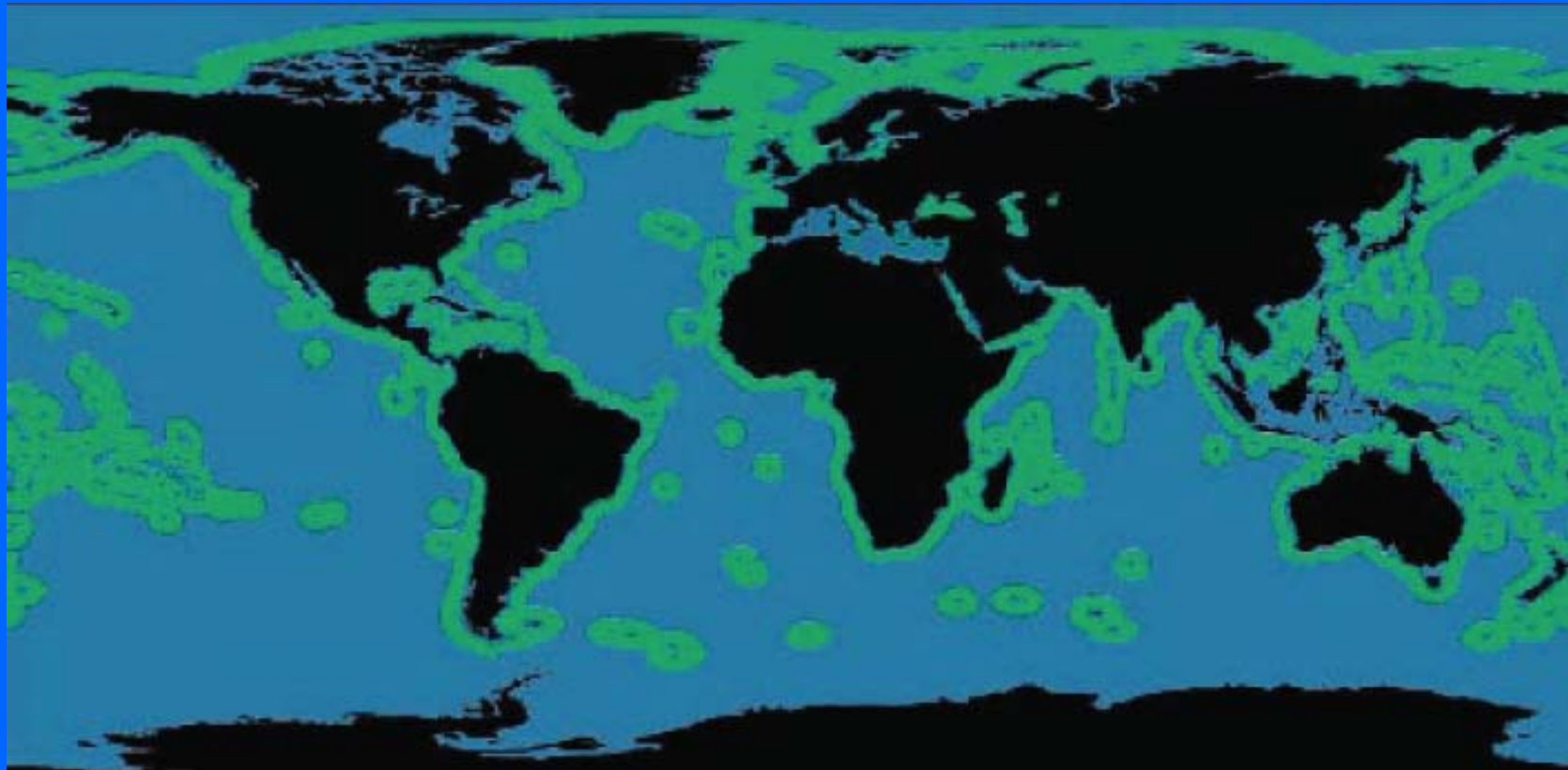
nearly
all deep water



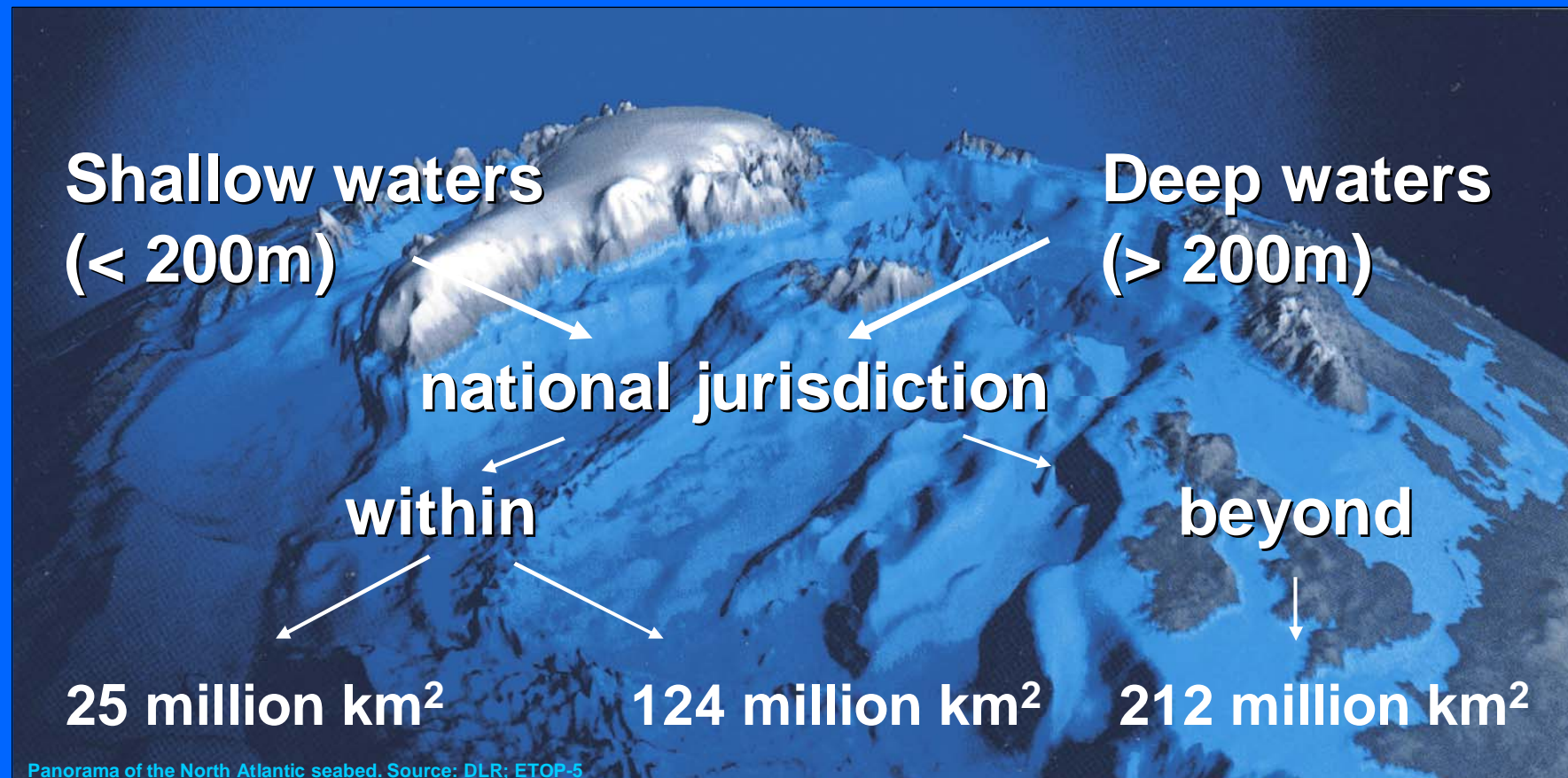
UNEP Coral Reef Unit (CRU)



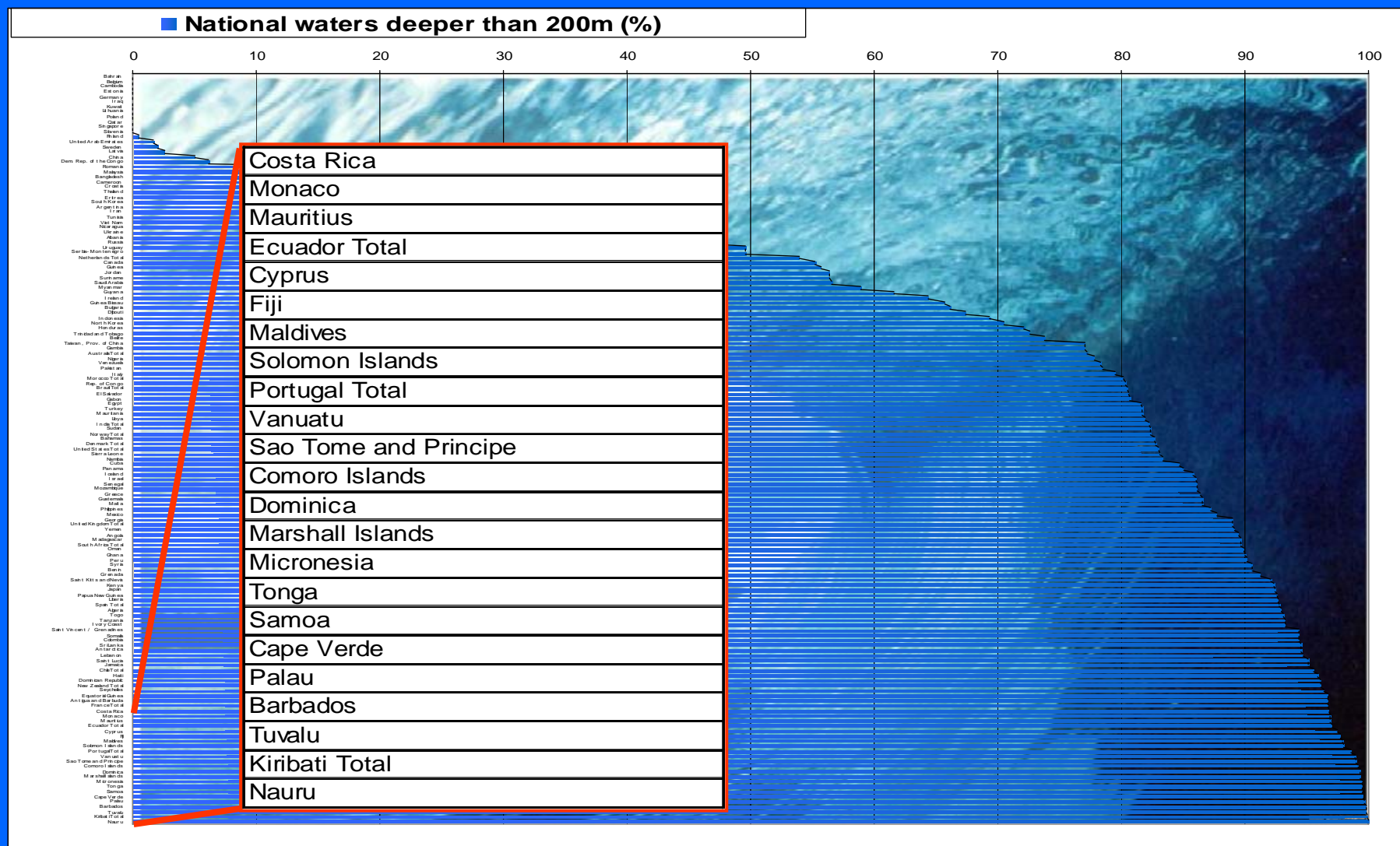
...64% lies beyond national jurisdiction



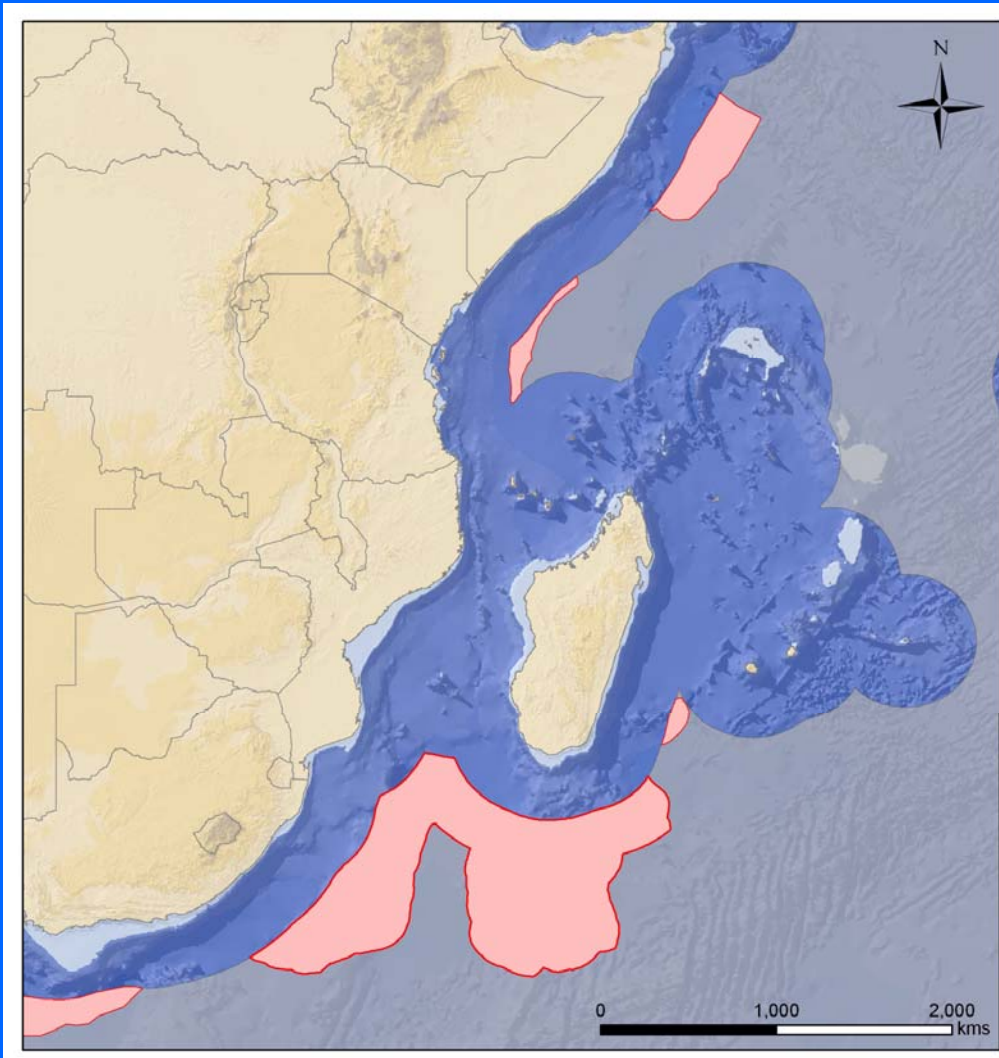
..... but there is also a large amount of deep waters under national jurisdiction



... in fact, on average about 70% of national waters are deeper than 200m ...



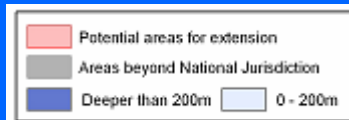
... and this percentage will increase ...



(more about this in the presentation on the UNEP Shelf Programme)

Example:

Deep waters within and beyond areas of national jurisdiction in East Africa

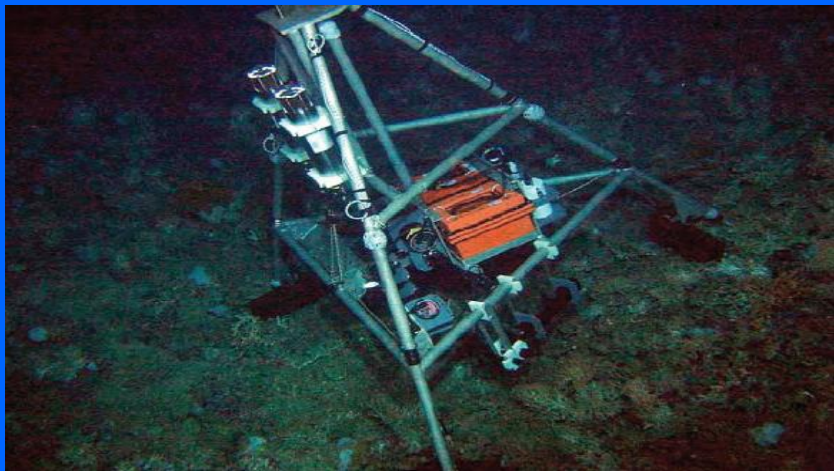




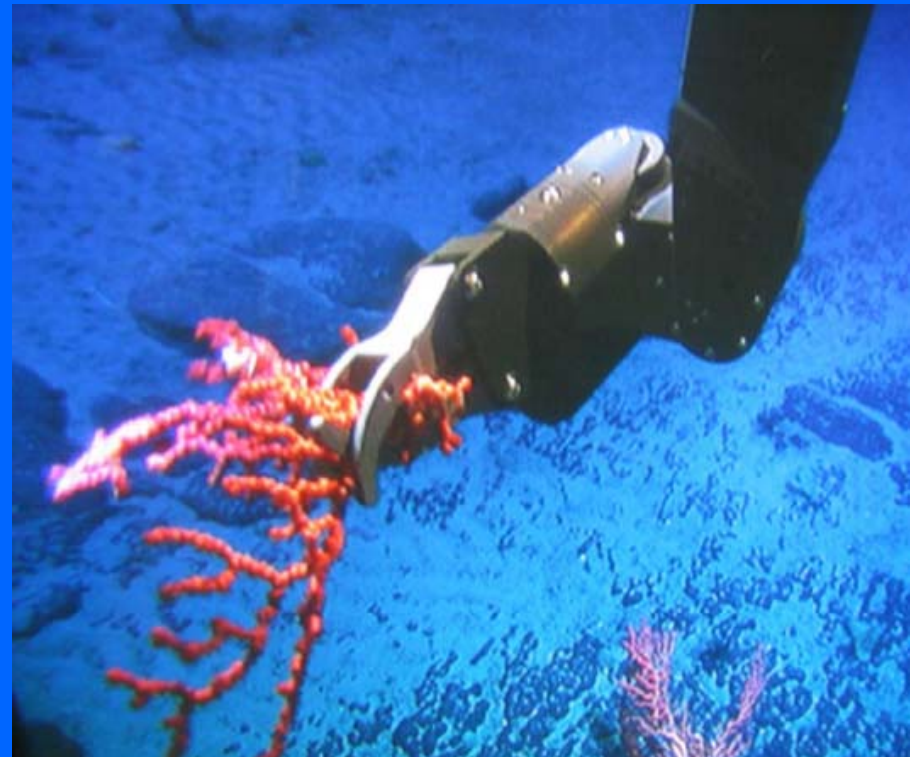
UNEP Coral Reef Unit (CRU)



... although 90 of the oceans remain unexplored



Only 0.0001% of the deep seafloor has been scientifically investigated



https://www.yunbaogao.cn/report/index/report?reportId=5_15153

预览已结束，完整报告链接和二维码如下：



Deep Coral Reef Unit (CRU)



Now now that the deep and
are highly structured and

