

Portugal State of the Environment Report 2012

Charts and Figures



Title

Portugal
State of the Environment Report 2012 | Charts and Figures

Publisher

Portuguese Environment Agency

Authors

Regina Vilão
Catarina Venâncio

Design and layout

Portuguese Environment Agency

Legal deposit

138 314/99

ISBN

978-972-8577-64-3

Edition date

February 2013

Cover image courtesy of Mrs. Margarida Cardoso da Silva

Portugal

State of the Environment

Report 2012

Charts and Figures



CONTENTS

General Framework	
Socio-Economic Framework	9
1. Eco-efficiency of the energy and transport sectors	10
2. Energy and carbon intensity of the economy	11
3. Domestic material consumption	12
4. Environmental taxes	13
5. Environmental management instruments	14
Water Quality	
6. Drinking water quality	16
7. Bathing water quality	17
8. Surface water quality	18
Climate Change	
9. Greenhouse gas emissions	20
10. Extreme weather events	21
11. Precipitation and surface air temperature	22
12. Sea surface temperature	23
13. Electricity consumption from renewable energy sources	24
Air Quality	
14. Emissions of acidifying and eutrophying substances	26
15. Emissions of tropospheric ozone precursors	27
16. Episodes of tropospheric ozone pollution	28
17. Air quality index	29
Waste	
18. Municipal waste generation	32
19. Municipal waste treatment and disposal	33
20. Packaging waste recovery	34
21. Transboundary movement of waste	35
Soil and Biodiversity	
22. Aquaculture production	38
23. Sales of plant protection products	39
24. Gross nutrient balance – nitrogen and phosphorus	40
25. Fish stocks below safe biological limits	41
26. Area under organic farming	42
27. Classified areas for nature conservation and biodiversity	43
Noise	
28. Population exposed to environmental noise	46
Risks	
29. Forest fires	48
30. Desertification susceptibility	49

The background features a series of thin, light green lines that create a sense of depth and movement. A prominent curved line starts from the bottom left and sweeps upwards towards the right. To the right of this curve, the lines form a dense grid pattern that tapers as it moves towards the top right corner. The overall effect is a modern, minimalist aesthetic.

GENERAL FRAMEWORK

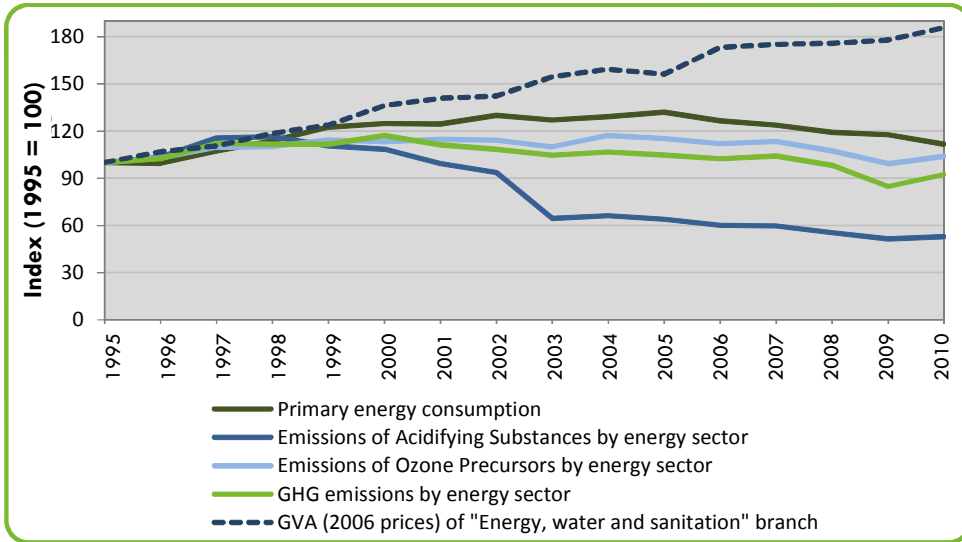
SOCIO-ECONOMIC FRAMEWORK

Area (km ²)			92 212
Perimeter of National Territory (km):			
Portugal			3 904
Mainland			2 559
Autonomous Region of the Azores			943
Autonomous Region of Madeira			402
Highest Point (m)			2 351
Coastline Length (km)			2 586
Exclusive Economic Zone – EEZ (km ²)			1 714 800
Municipalities (No.)			308
Resident population (No.)	2011		10 561 614
Population Density (hab/km ²)	2011		114.5
Active Population (thousands)	2011		5 543.2
		Portugal	EU-27
GDP per capita (Index EU-27=100)	2011	77	100
General government gross debt (% of GDP)	2011	107.8	82.5
Labour productivity (Index EU-27=100)	2010	77.2	100
Inflation rate (%)	2011	3.6	3.1
Total R&D expenditure (% of GDP)	2010	1.59 ^p	2.0 ^e
Old-age dependency ratio (%)	2011	27.2	25.9 ^p
Unemployment rate (%)	2011	12.9	9.7
Inequality of income distribution (S80/S20 – %)	2010	5.6	5
Population at risk of poverty or social exclusion (%)	2010	25.3	23.5
Population aged between 20 to 24 who have completed at least upper secondary education (%)	2010	58.7	79

e Estimated p Provisional

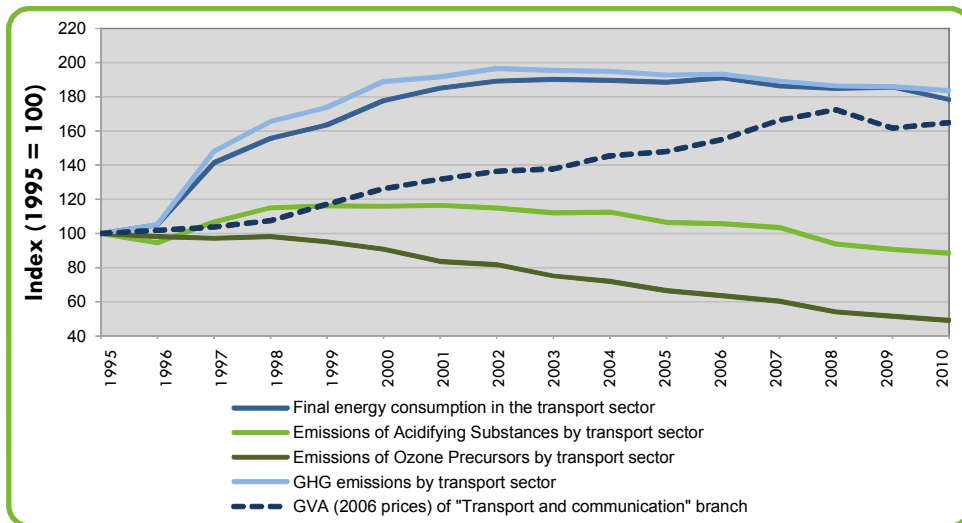
ECO-EFFICIENCY OF THE ENERGY AND TRANSPORT SECTORS

Eco-efficiency of the energy sector – production and processing of energy



Source: INE, 2012

Eco-efficiency of the transport sector



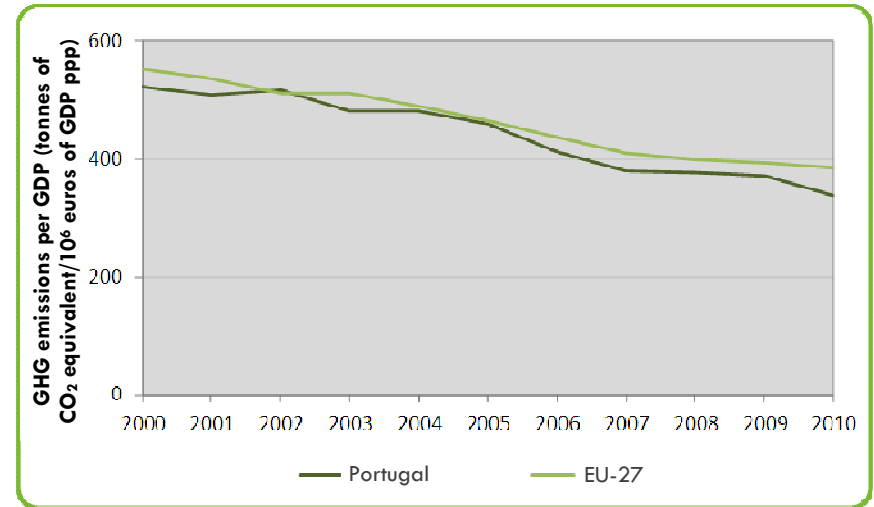
Source: INE, 2012

For more information:

<http://sniamb.apambiente.pt/portallids/Indicadores/FichaIndicador.aspx?IndID=48>

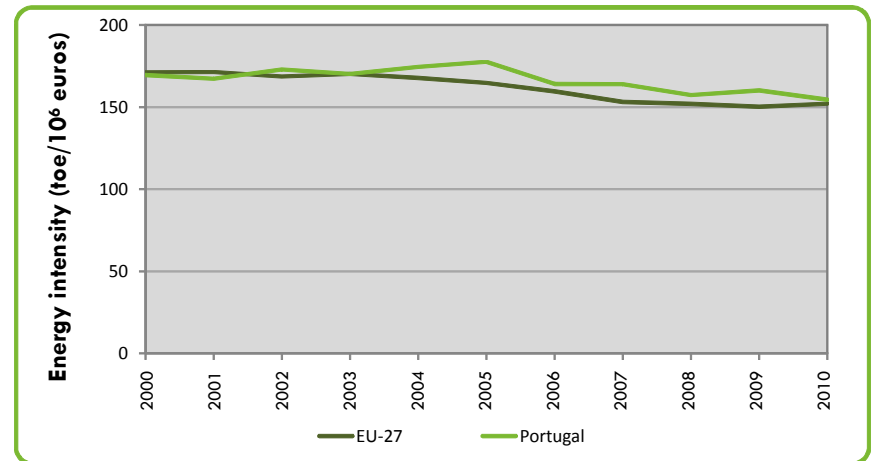
ENERGY AND CARBON INTENSITY OF THE ECONOMY

Carbon intensity of the economy: Portugal and EU-27



Source: EEA, 2012; Eurostat, 2012

Energy intensity of the economy: Portugal and EU-27



Note: This indicator is the result of the ratio between the gross inland energy consumption and the gross domestic product - GDP. The gross inland consumption is calculated as the sum of gross inland consumption of five energy types: coal, electricity, oil, natural gas and renewable energy sources.

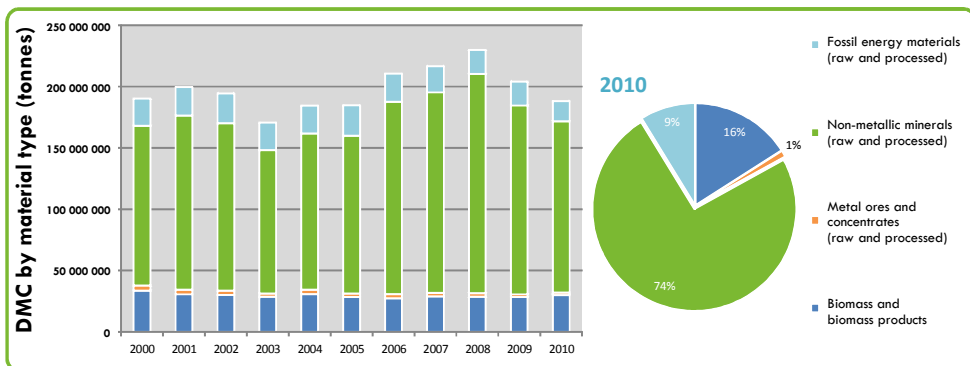
Source: Eurostat, 2012

For more information:

<http://sniamb.apambiente.pt/portallids/Indicadores/FichaIndicador.aspx?IndID=28>

3. DOMESTIC MATERIAL CONSUMPTION

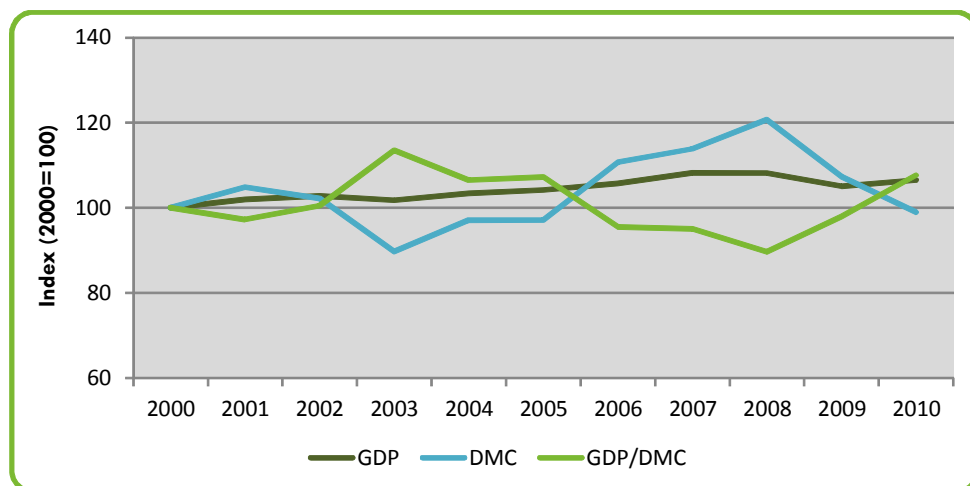
Composition of domestic material consumption by material type



Note: 2010 data are provisional.

Source: INE, 2012

Evolution of GDP, domestic material consumption and resource productivity in the economy



Note: 2010 data are provisional.

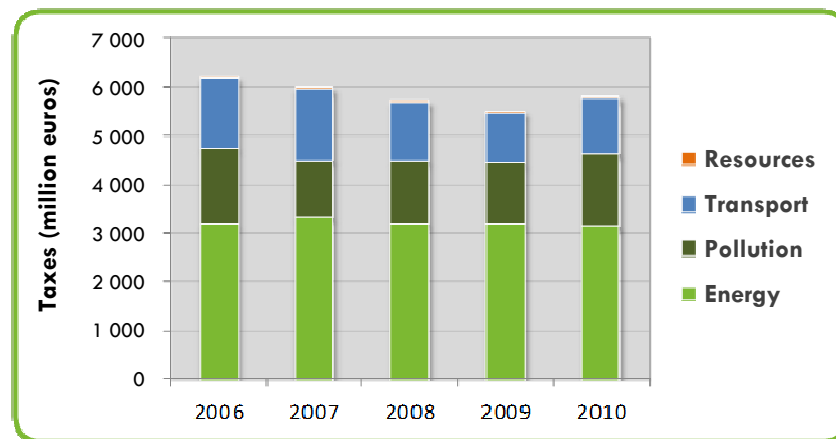
Source: INE, 2012

For more information:

<http://sniamb.apambiente.pt/portalids/Indicadores/FichaIndicador.aspx?IndID=12>

4. ENVIRONMENTAL TAXES

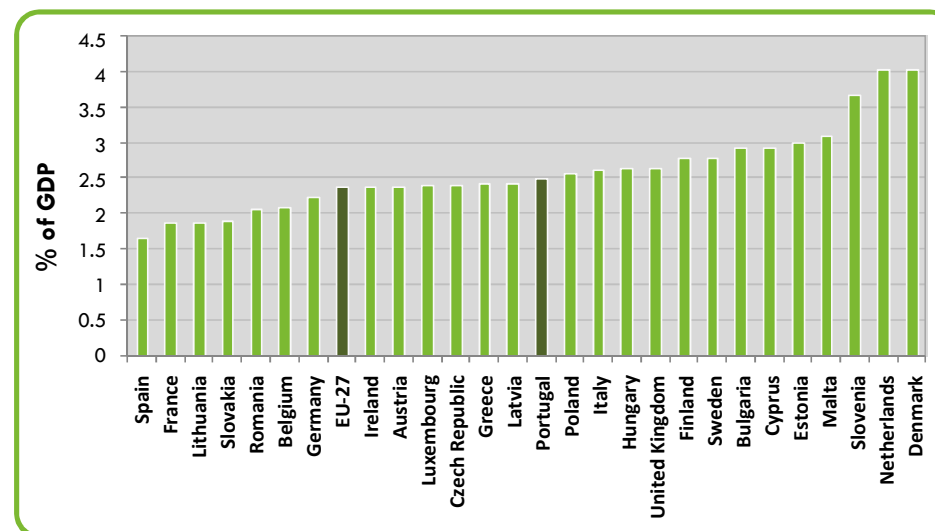
Total environmental taxes by category



Note: 2010 data are provisional.

Source: INE, 2011

Environmental taxes as % of GDP in the EU-27 in 2010



Note: Eurostat data do not include taxes on tobacco and noise.

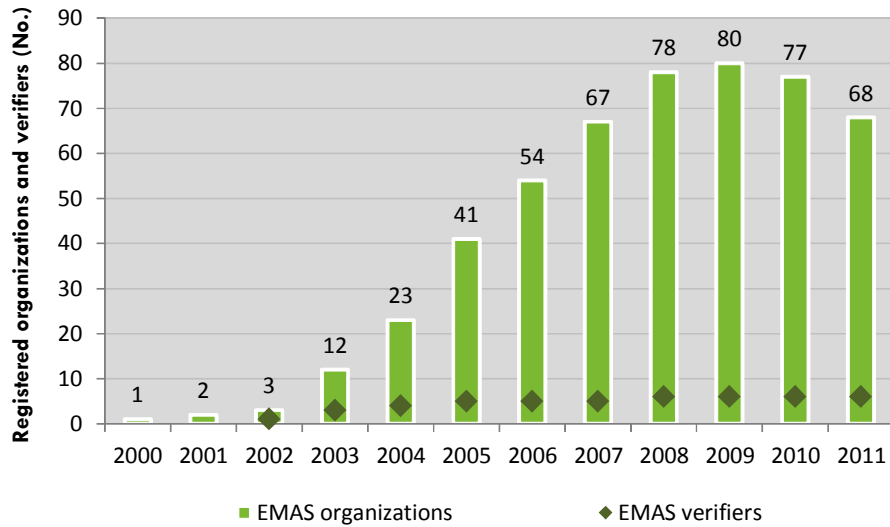
Source: Eurostat, 2012

For more information:

<http://sniamb.apambiente.pt/portalids/Indicadores/FichaIndicador.aspx?IndID=133>

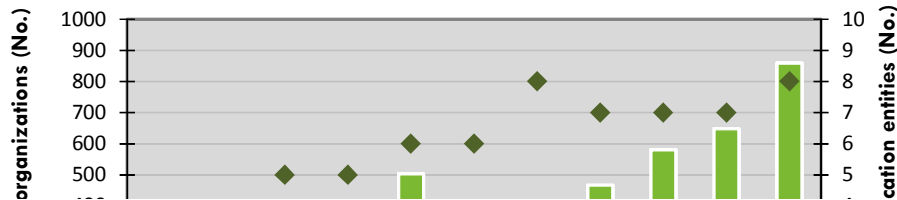
5. ENVIRONMENTAL MANAGEMENT INSTRUMENTS

EMAS registered organizations and verifiers accredited in Portugal



Source: APA, 2012

ISO 14001 certified organizations and Portuguese Quality System accredited certification entities in Portugal



预览已结束，完整报告链接和二维码如下：

https://www.yunbaogao.cn/report/index/report?reportId=5_9457



WATER QUALITY