

# International cooperation on power interconnection: Mongolian Regulatory perspective

ENKHTUVSHIN Ganbaatar

Ph.D. candidate

Energy and Environmental Department, Korea University

/Former Director of International cooperation Division, Ministry of Energy/

15 DEC 2016

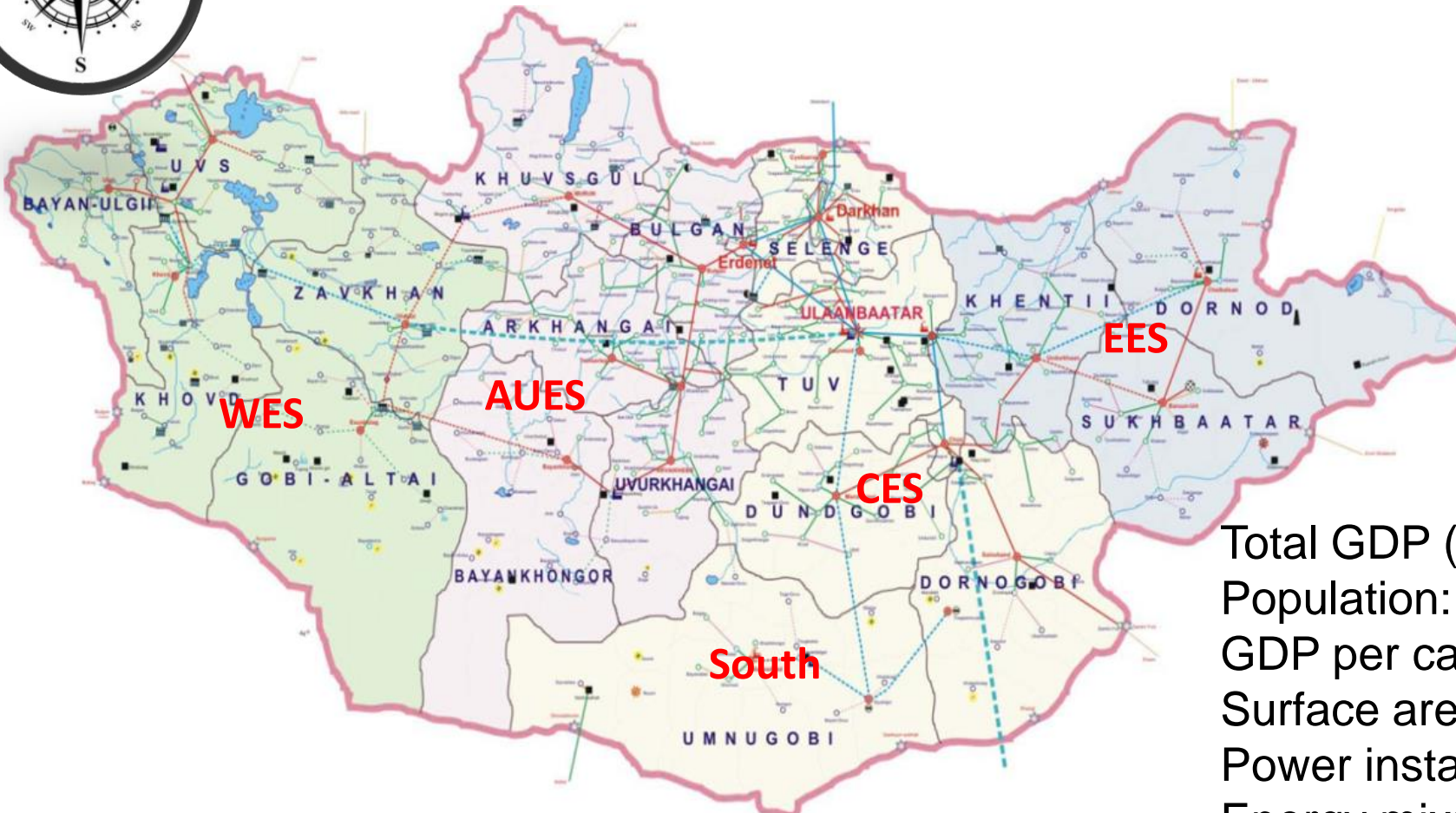
Seoul, Republic of Korea

# Table of Contents

- Introduction
  - Mongolian energy sector
- Mongolian regulatory and investment framework of power interconnection
  - Regulations
  - Investment environment
- Multi/bilateral dialogue and cooperation on power interconnection
  - Bilateral cooperation of power trade
  - Multilateral cooperation of regional power interconnection
- Conclusion

# Introduction

Power system Map of Mongolia



Total GDP (current USD): 11,7 billion  
Population: 3,120,606  
GDP per capita (current USD): 3973.4  
Surface area: 1,566,000 km<sup>2</sup> (19<sup>th</sup>)  
Power installed capacity: 1178 MW  
Energy mix: 89% CHP, 5% Wind& Solar PV's,  
4% Diesel, 2% Hydro  
Energy access to grid: 98%  
Government:  
Unitary-Parliamentary republic

# Table of Contents

- Introduction
  - Mongolian energy sector
- **Mongolian regulatory and investment framework of power interconnection**
  - Regulations
  - Investment environment
- Multi/bilateral dialogue and cooperation on power interconnection
  - Bilateral cooperation of power trade
  - Multilateral cooperation of regional power interconnection
- Conclusion

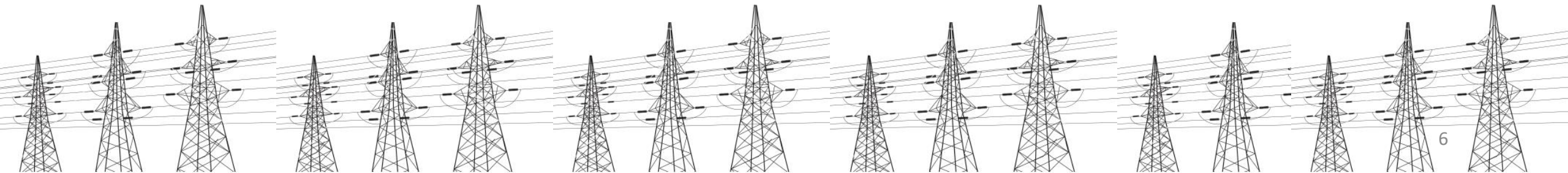
# Mongolian regulatory framework of power interconnection: **Regulations**

- Legal and regulatory environment for Power trade
  - Energy law /2015/: Enables power export and import
  - Renewable Energy Law: FiT, Supporting Tariff, Long Term PPA
  - National Energy Policy Document /2015/: 2<sup>nd</sup> Term 2024-2030 The stage to export secondary energy and develop sustainable renewable energy sector, up to 30% from renewable energy
  - Government Action Plan /2016-2020/: By maintaining local electricity supply-demand sustainably, initiates trans border power export projects to PRC



## Continue .....

- **Ministry of Energy** /Central Public Administration Institution to carry out Country wide Energy policy/
  - Carry out and determine necessary strategies and policy to develop Energy export and import policy
- **Energy Regulatory Committee** /Energy Regulator in the Country/
  - Awarding licenses to power generator, trader and transmitter etc.
- **National Dispatching Centre** /Main body of single buyer model/
  - Dispatch energy flows through out the country
  - Plan and organize Power export and import
- **National and Local Power Transmission company/1+4/:**
  - own and maintain  $\geq 110kV$  transmission lines



# Mongolian regulatory framework of power interconnection:

## Investment environment:

- **Concession Law**                      2010      Establish the framework for granting concessions to private investors to use existing infrastructure facilities owned by the state, and to construct new infrastructure facilities for the purpose of providing services to the general public
- **Investment Law**                2013      Protect the legal rights and interests of investors in the territory of Mongolia, to establish a common legislative guarantee for investment, to stabilize the tax environment.

### Coal Fired TPP's for Export purpose:

- “Shivee Ovoo” Thermal Power Plant /TPP/
- “Tevshiin Goviin” TPP

### Renewable energy:

- “Egiin” HPP /Government/
- “Erdeneburen” HPP /Government and Private/
- “Sain Shand” wind farm /private/
- “Tsetsii” wind farm /private/



# Table of Contents

- Introduction
  - Mongolian energy sector
- Mongolian regulatory and investment framework of power interconnection
  - Regulations
  - Investment environment
- Multi/bilateral dialogue and cooperation on power interconnection

预览已结束，完整报告链接和二维码如下：

[https://www.yunbaogao.cn/report/index/report?reportId=5\\_1753](https://www.yunbaogao.cn/report/index/report?reportId=5_1753)

