

**The Internet Protocol is central to the Internet.
It exists in any device, service or system that
needs to connect to the Internet.**

**Since the birth of the Internet
we have used
IP version 4.**



3.7 billion

addresses available

"IANA Global Pool"

1983

The Birth of the Internet

THE FIRST WAVE OF ADDRESS ALLOCATION

35%
IPv4 SPACE
ALLOCATED

1992

65%
IPv4 SPACE
AVAILABLE

Expanding the Internet

THE RIR SYSTEM ESTABLISHED
FOR SUSTAINABLE ADDRESS ALLOCATION

1992  **RIPE
NCC**

1993  **APNIC**

1997  **ARIN**

1999  **lacnic**

2005  **AFRINIC**
The Internet Numbers Registry for Africa

THE REGIONAL
INTERNET REGISTRIES

The RIR system allocates addresses according to policies developed in open, transparent, bottom-up, multistakeholder processes

25 Billion devices online?

with 3.7 Billion IPv4 addresses?

... How exactly?

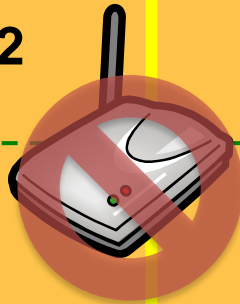
IPv4 Address Sharing and NAT

Internet

Phone Network

202.12.29.32

02 6262 9898



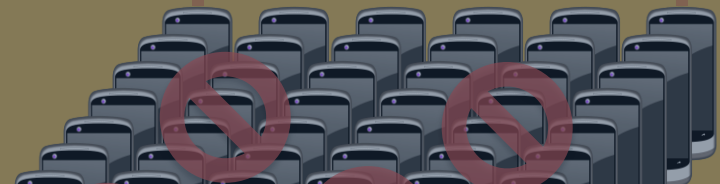
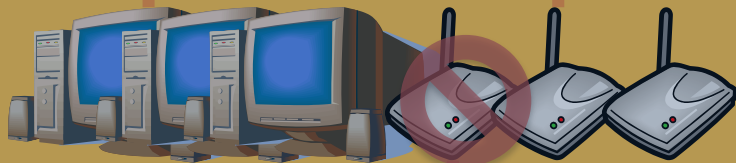
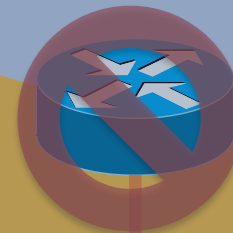
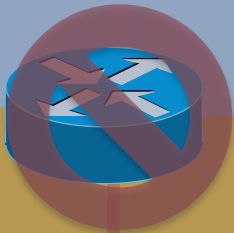
10.0.0.202 ...



Extn 202

IPv4: Double NAT

Internet



预览已结束，完整报告链接和二维码如下：

https://www.yunbaogao.cn/report/index/report?reportId=5_2525

