

Session 4

Mobilizing financial resources for development and capacity development in the LDCs (priority g)

Financing strategies for LDC graduation: trends, effectiveness and prospects

Siem Reap, Cambodia
4-6 March 2015

Dr. Ayul Hasan
Director,
Macroeconomic Policy and Development Division
ESCAP

1

Outline


- **Setting the stage**
- **Framework for mobilizing resources and trends**
- **Prospects for raising financing**
- **Possible policy reforms**

2

Issue 1


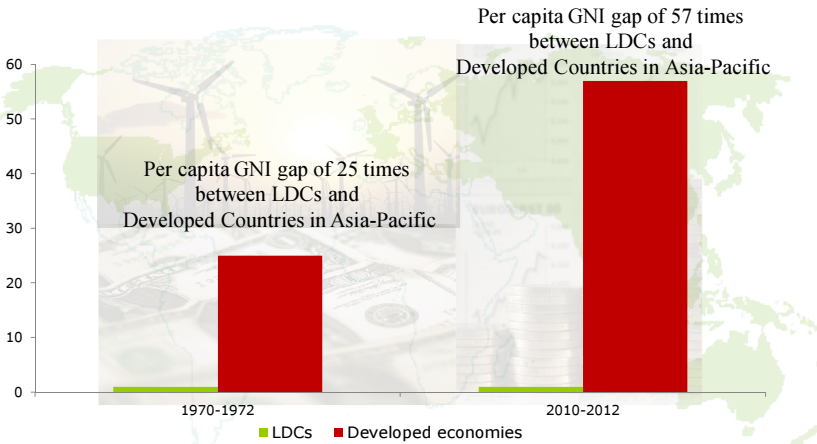


Setting the stage



3

Income divergence

Period	LDCs	Developed economies
1970-1972	~1	~25
2010-2012	~1	~57

Per capita GNI gap of 25 times between LDCs and Developed Countries in Asia-Pacific (1970-1972)

Per capita GNI gap of 57 times between LDCs and Developed Countries in Asia-Pacific (2010-2012)

Source: ESCAP calculations
 Note: LDCs-AP consists of 12 countries (US Dollars current prices) and Developed-AP consists of Australia, Japan and New Zealand

4

Lack of financial resources



ESCAP estimates

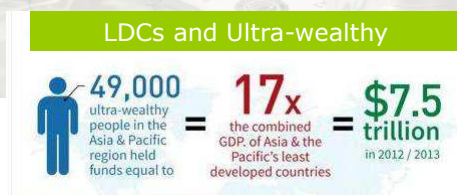
Requirements:

Asia-Pacific region would need to invest \$2.1 trillion to fund a comprehensive agenda for sustainable development

LDCs requirements vary across economic, social and environmental dimensions

Stock of public and private savings:

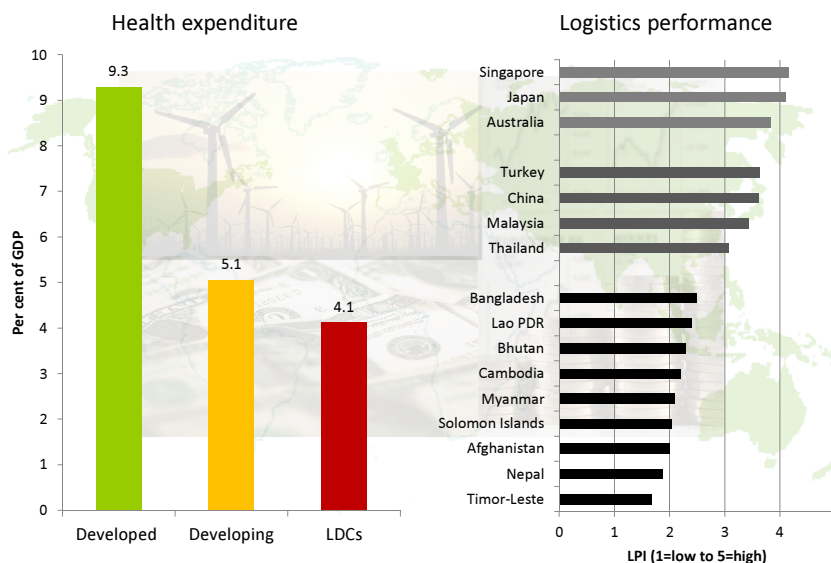
\$50 trillion in 2013, but mostly outside of LDCs



Source: ESCAP calculations


5

Challenges in public service provisions



Source: ESCAP

Issue 2




Framework for mobilizing resources and trends



7

Framework for mobilizing financial resources for development



Sources	Institutions, agents & tools	Graduation to SD
<p>Domestic sources</p> <p>Public</p> <ul style="list-style-type: none"> -Government tax revenue <p>Private</p> <ul style="list-style-type: none"> -Households -Corporations 	<p>-Taxation & expenditure</p> <ul style="list-style-type: none"> -Financial inclusion and trade finance for SMEs -Carbon taxes <p>-Capital markets</p> <ul style="list-style-type: none"> -Institutional investors <p>-Public-Private Partnership</p> <p>-Climate finance</p>	<p>-Low-income criteria</p> <ul style="list-style-type: none"> • GNI per capita <p>-Human Assets Index</p> <ul style="list-style-type: none"> • Nutrition (% undernourishment) • Health (mortality rate) • Education (gross secondary enrolment and adult literacy rate) <p>-Economic Vulnerability Index</p> <ul style="list-style-type: none"> • Population size • Remoteness • Merchandise export concentration • Share of agriculture, forestry and fisheries in gross domestic product • Share of population living in low elevated coastal zones • Instability of exports of goods and services • Victims of natural disasters; and • Instability of agricultural production
<p>External sources</p> <p>Public</p> <ul style="list-style-type: none"> -Bilateral and multilateral donors -Multilateral development financial institutions <p>Private</p> <ul style="list-style-type: none"> -Multinational corporations -Migrant workers 	<p>-Official development assistance</p> <ul style="list-style-type: none"> -Foreign direct investment -Remittances <p>-South-South Cooperation & Triangular cooperation</p>	

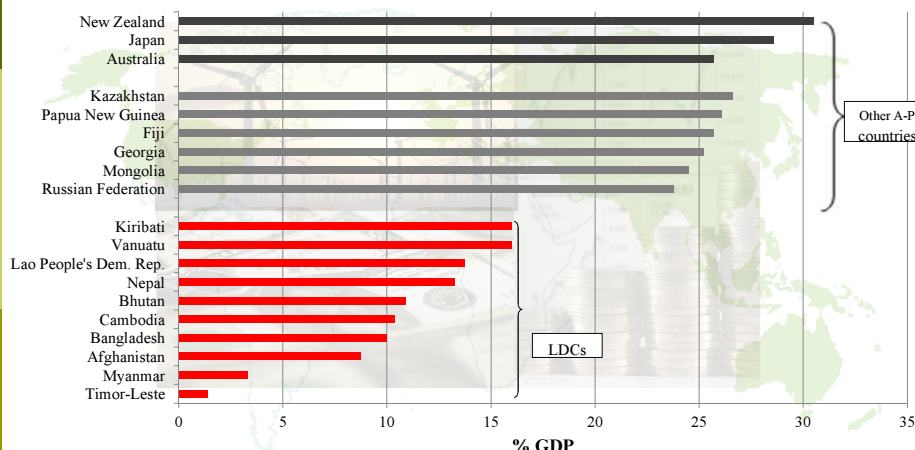
Source: ESCAP

8

Domestic public resources: tax revenues



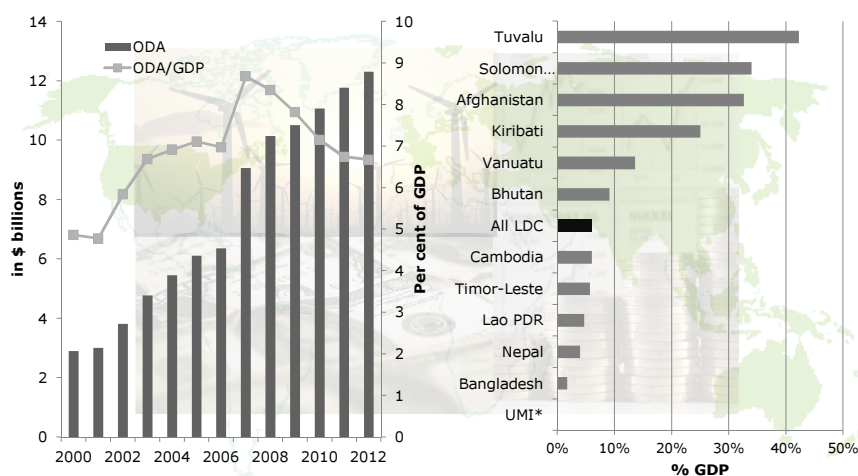
Tax-to-GDP ratio in selected Asia-Pacific countries, 2011



Source: ESCAP 2014

9

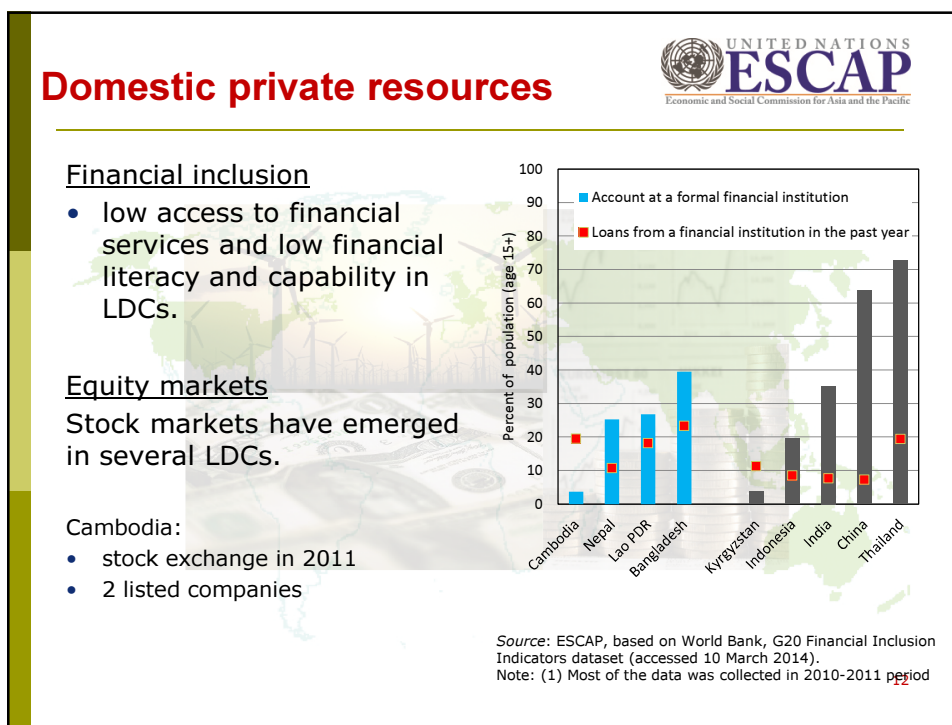
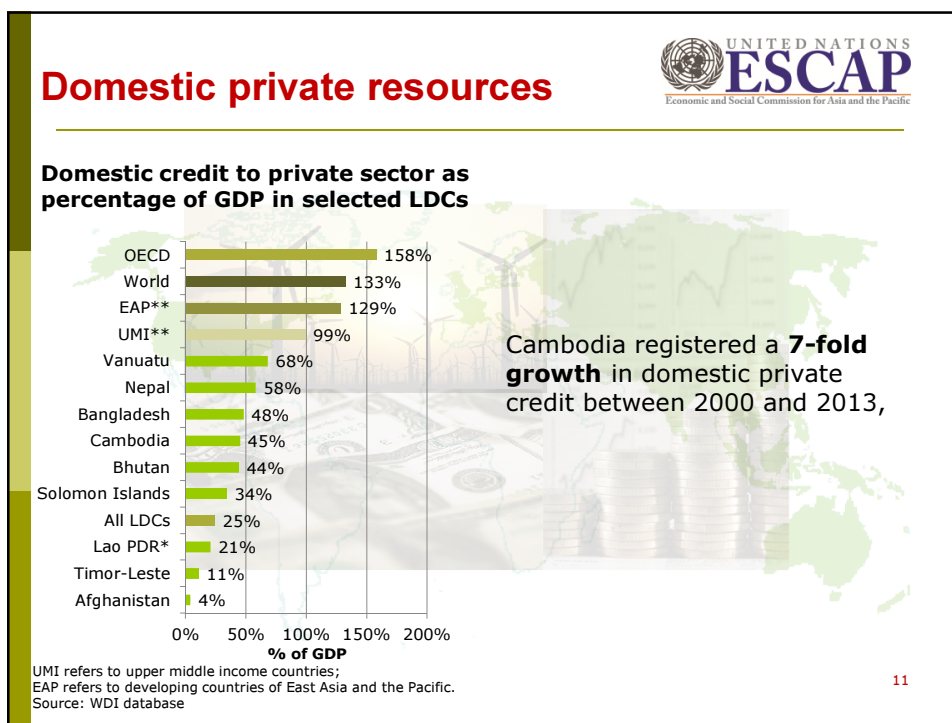
External public resources: Official Development Assistance

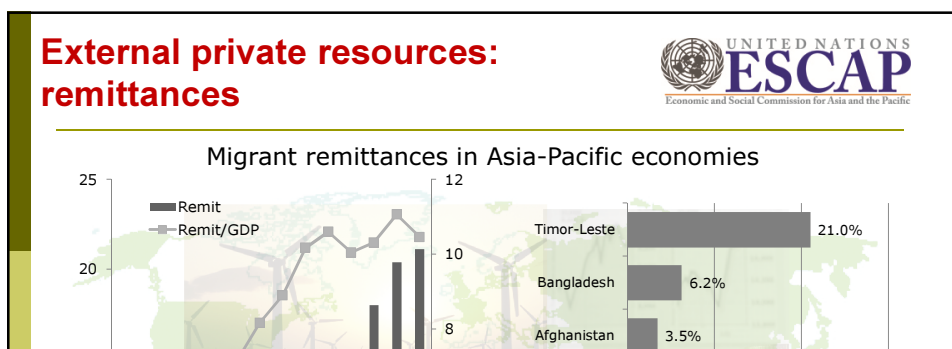
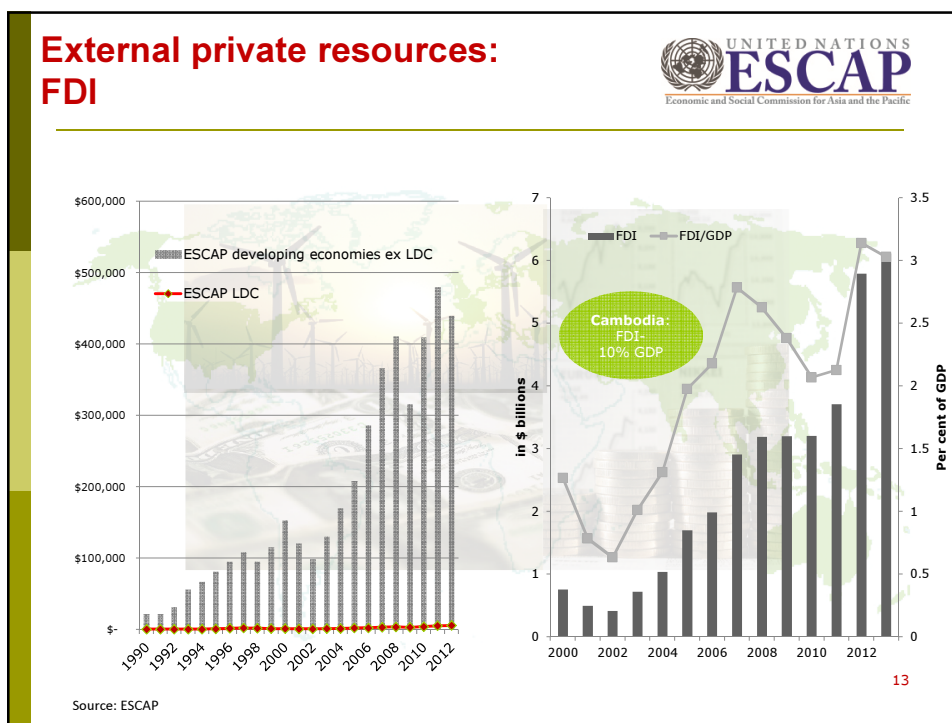


Source: ESCAP

Note: * UMI refers to upper middle income countries.
Source: WDI database

10





预览已结束，完整报告链接和二维码如下：

https://www.yunbaogao.cn/report/index/云报告?reportId=5_4450



云报告
<https://www.yunbaogao.cn>

云报告
<https://www.yunbaogao.cn>

云报告
<https://www.yunbaogao.cn>