



Disaster risk reduction and climate change adaptation in Mongolia



17 FEBRUARY 2015

CONTEXT

1. Mongolian profile and disaster characteristics

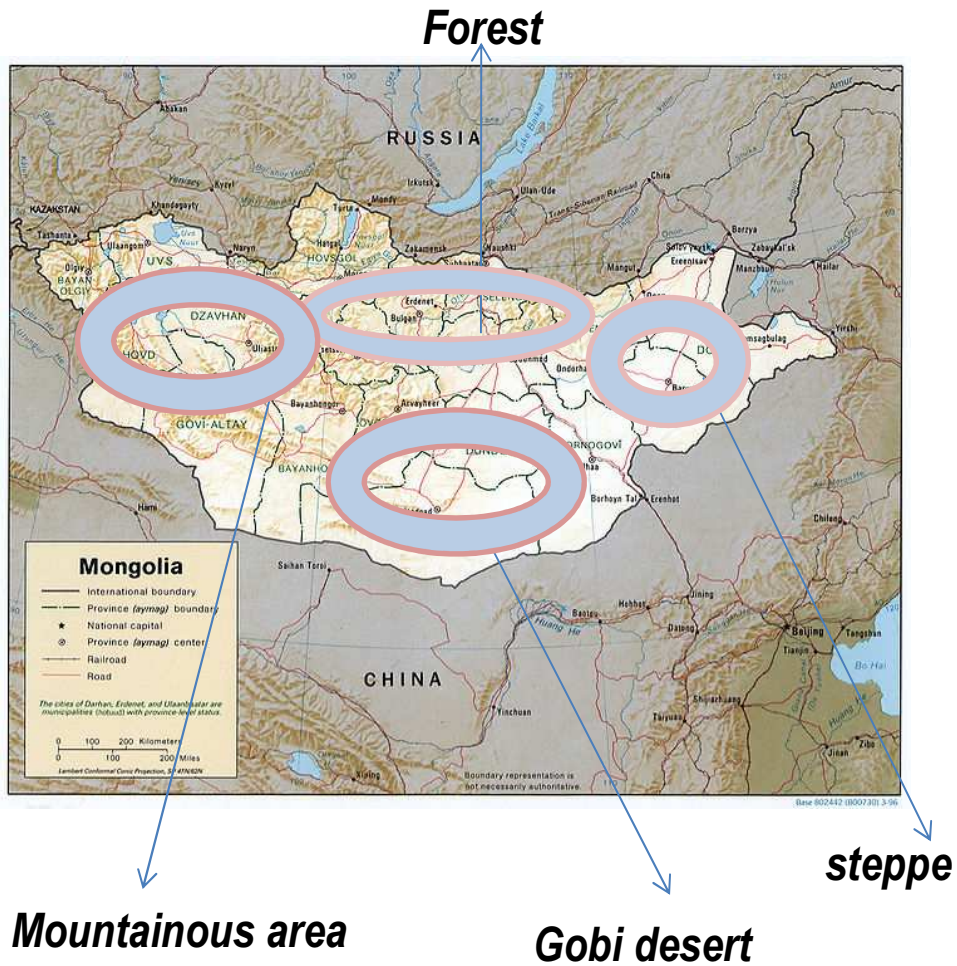
2. Legal framework for DRR and CCA

3. Institutional framework

4. Financing and planning

5. Gaps and needs

1. Mongolian profile



Population: 3,000,253

Total territory: 1,564,115.75 km²

GDP: 12.3 billion US\$

Economic growth: 7% /by 2014.Oct/

Administrative divisions:

21 provinces, 326 sub-provinces

Capital city: Ulaanbaatar

40% of total population

Highest point: 4,374 m

Lowest point: 650 m

Average: 1500 m

Interval of temperature: +35- -30

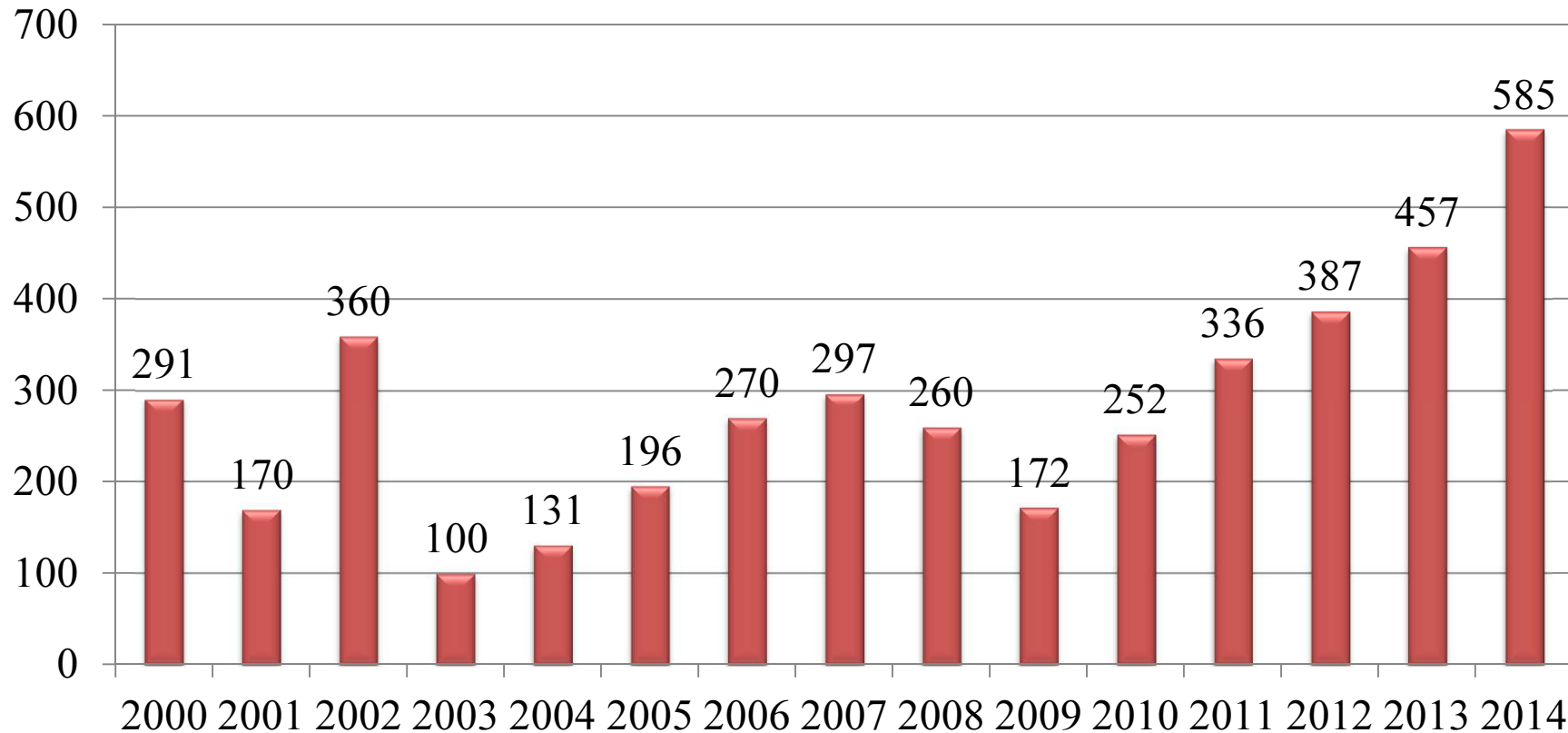
Climate condition



Disaster characteristics

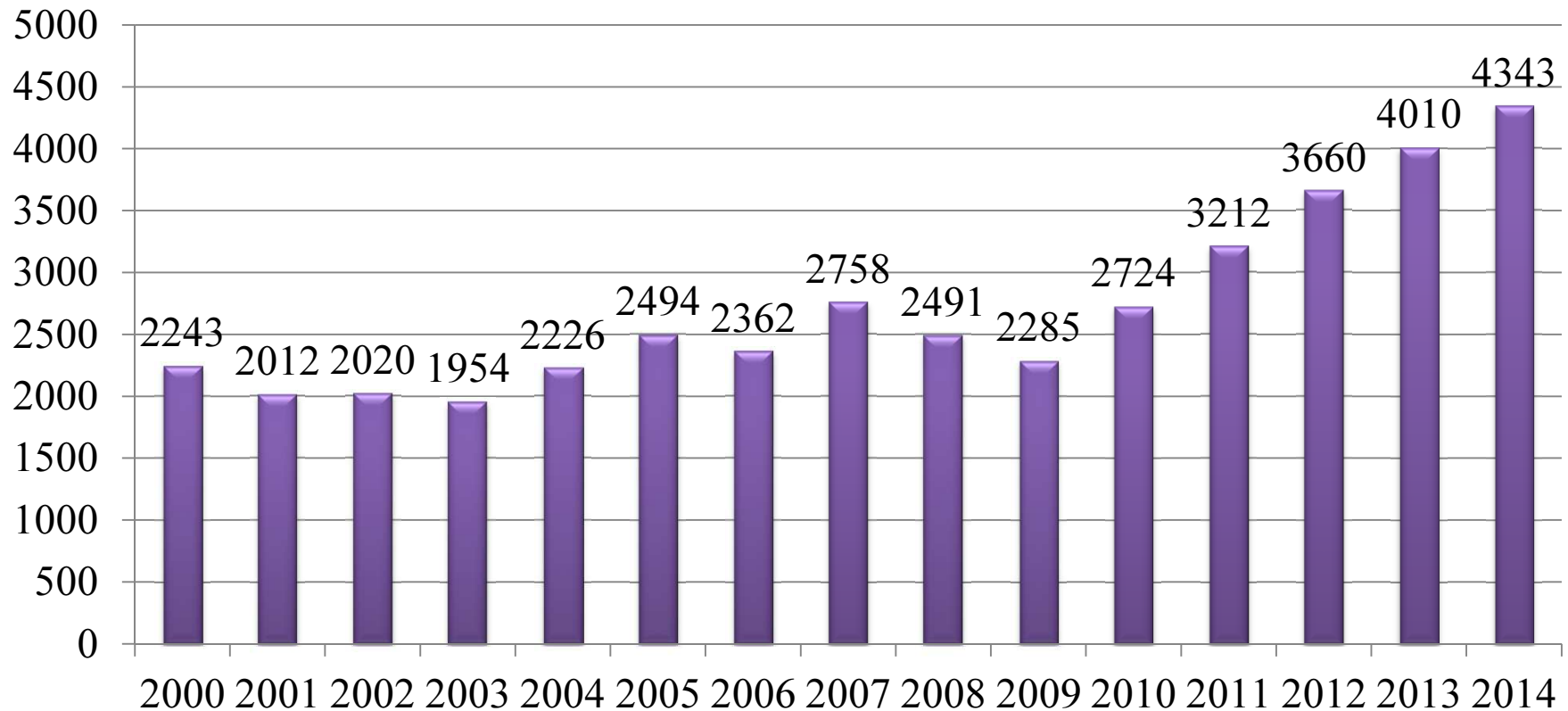
Classification	Type	Disasters
Natural Disasters	Climatic hazardous phenomena	Snow storm
		Severe snowfall
		Dzud
		Dust storm
		Flood
		Steppe and forest fire
		Desertification
		Thunderstorm
	Geological threats	Earthquake
		Landslides
		Spread of detrimental rodents
	Biological threats	Human infectious diseases
		Livestock or animal infectious diseases
Industrial accidents		
Manmade Disasters	Technological accidents	Traffic accidents
		Leakage of chemical and radiological substances
		Explosion
		Building fire
		5

Occurrences of natural disasters and phenomena (2000-2014)



Types of natural disasters in Mongolia: Forest and steppe fire, floods, snow and dust storms, thunderstorms, dzud, earthquake, human and animal infectious diseases.

Occurrences of human induced incidents (2000-2014)



\Types of Human Induced Disasters: Building fire, Industrial and Traffic accidents, Leakage of Chemical and radiological substances.

https://www.yunbaogao.cn/report/index/report?reportId=5_4509

预览已结束，完整报告链接和二维码如下：



work for DRR and CCA

MONGOLIA

/1999/

rotection /2003/

ve /2007/

ster Protection, and National Programme for the Implementation of the
tion # 22/

MONGOLIA

esolution # 51 on measures for implementing Law on Disaster Protection

er of Disaster Warning /2011, Resolution #339/

ment of disaster resource & Procedure of Emergency Evacuation /2011,

n for State Policy on Disaster Protection /2012, Resolution # 30/

MINISTER

amme on Community based disaster risk reduction /2013, Order # 35/

er protection Professional Unit /2013, Order #07/

tection State Service /2013, Order # 52/

EMERGENCY MANAGEMENT AGENCY

ing disaster protection complex and managerial trainings and drills

g emergency evacuation /2013, Order # A/483/

Management Plan for aimag, city, soum and district levels & Guidance
A/170 /