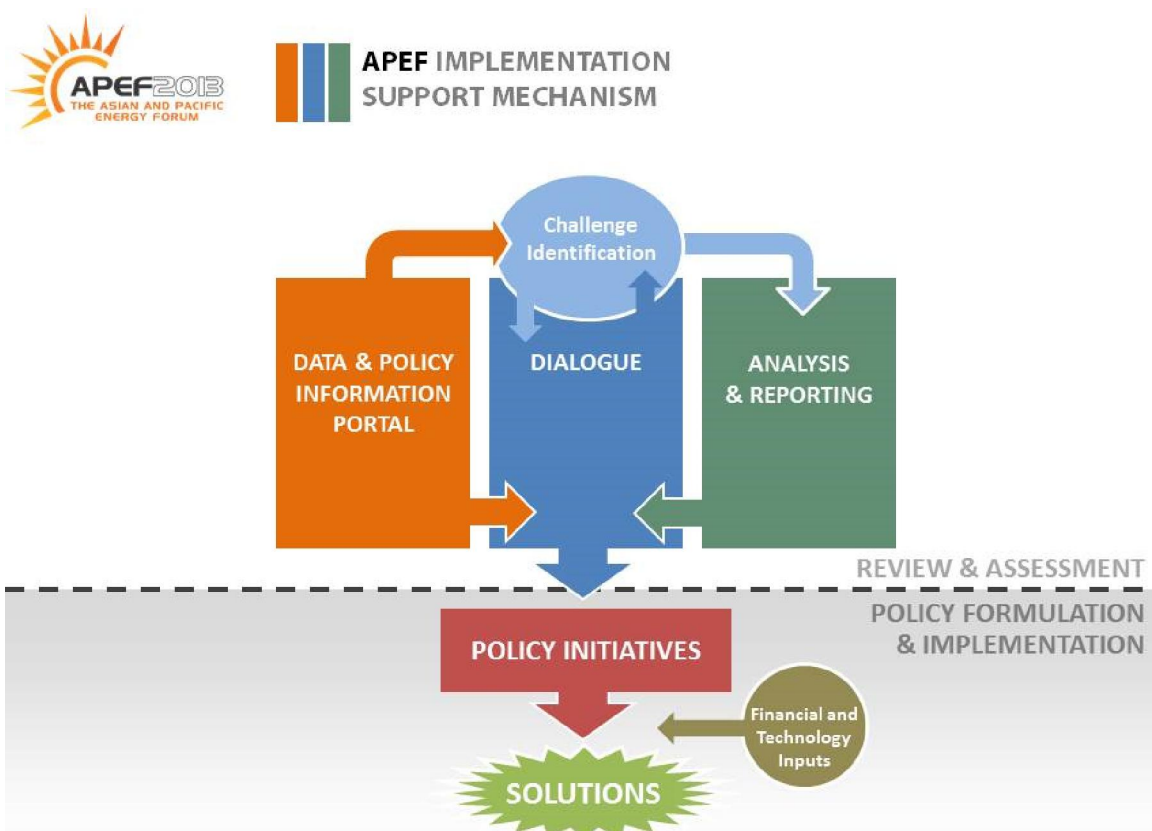


OVERVIEW: APEF IMPLEMENTATION SUPPORT MECHANISM

The ESCAP secretariat is mandated to support the implementation of the outcome documents, and to periodically review and assess progress leading up to the next APEF in 2018.

An **APEF Implementation Support Mechanism** is currently under development to meet this mandate. Current work to develop the broad mechanism is focused on strategy development – identifying structure, needed inputs, expected outputs, outcomes, milestones, and strategic partnerships. The Mechanism will be solution-driven, with expected outputs in the form of multilateral policy initiatives and solutions.



The Mechanism is supported by a 3-pillar Review & Assessment core - **1) Data & Policy Information Portal, 2) Dialogue, and 3) Analysis & Reports.**



1) **The Data & Policy Information Portal** is currently under development. Its functions include providing highly interactive data visualizations that enable rapid analysis, as well as access to national policies. With the ability to simultaneously view data and policy, the platform will provide a unique analytical tool for ongoing APEF activities, as well as enable member States and development stakeholders access to centralized information for the region.

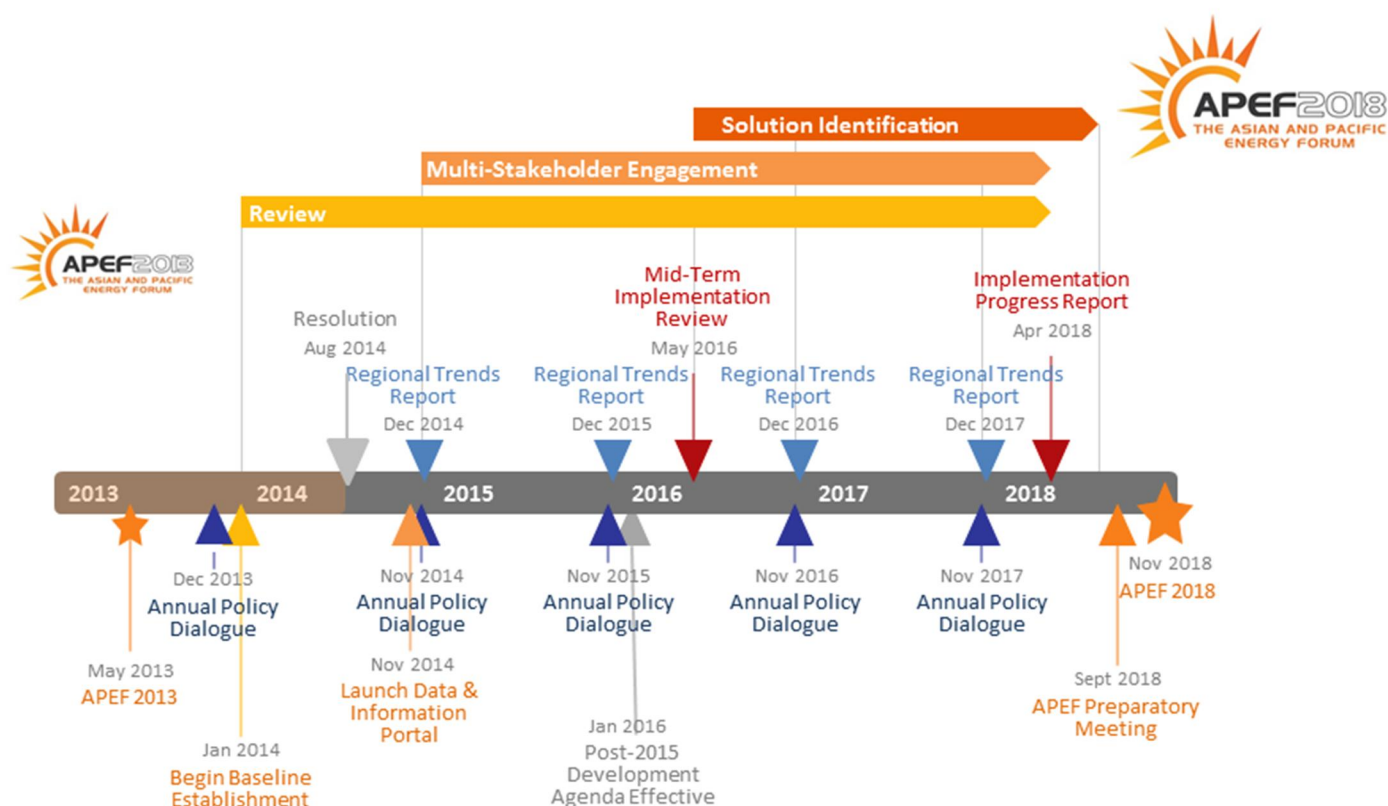
An EGM was held in August 2014 to gain feedback from member States and institutions engaged in the collection, management and use of data regarding the development of the APEF Data & Policy Information Portal.

2) **Dialogues** include the annual high-level Policy Dialogue, which will be focused on identifying solutions to key challenges, as well as the potential establishment of working-level groups to support the implementation of policy solutions.

3) **Analysis & Reports** will feed into Dialogues and serve as the channel through which ESCAP provides analysis around key challenges identified by member States. By providing analysis on key energy issues, the APEF publications will support the identification of potential policy solutions.

To enable the Review & Assessment process to support and feed into the Policy Formulation & Implementation stage (the bottom half of the APEF Implementation Support Mechanism), guidance will be sought from member States during the 2014 Policy Dialogue on the development of a facilitating framework.

TIMELINE



Benefits and Relevance of the APEF Implementation Support Mechanism

- Capitalizes on a globally-significant ministerial agreement on energy
- Raises the value of multi-lateral energy dialogue in Asia and the Pacific
- Provides the framework for ESCAP's ongoing activities in energy
- Creates a knowledge hub that supports regional dialogue and analysis
- Enables innovative data access and policy knowledge exchange

预览已结束，完整报告链接和二维码如下：

https://www.yunbaogao.cn/report/index/report?reportId=5_4795

