

The Automation of Philippine Agri-Import Processes:

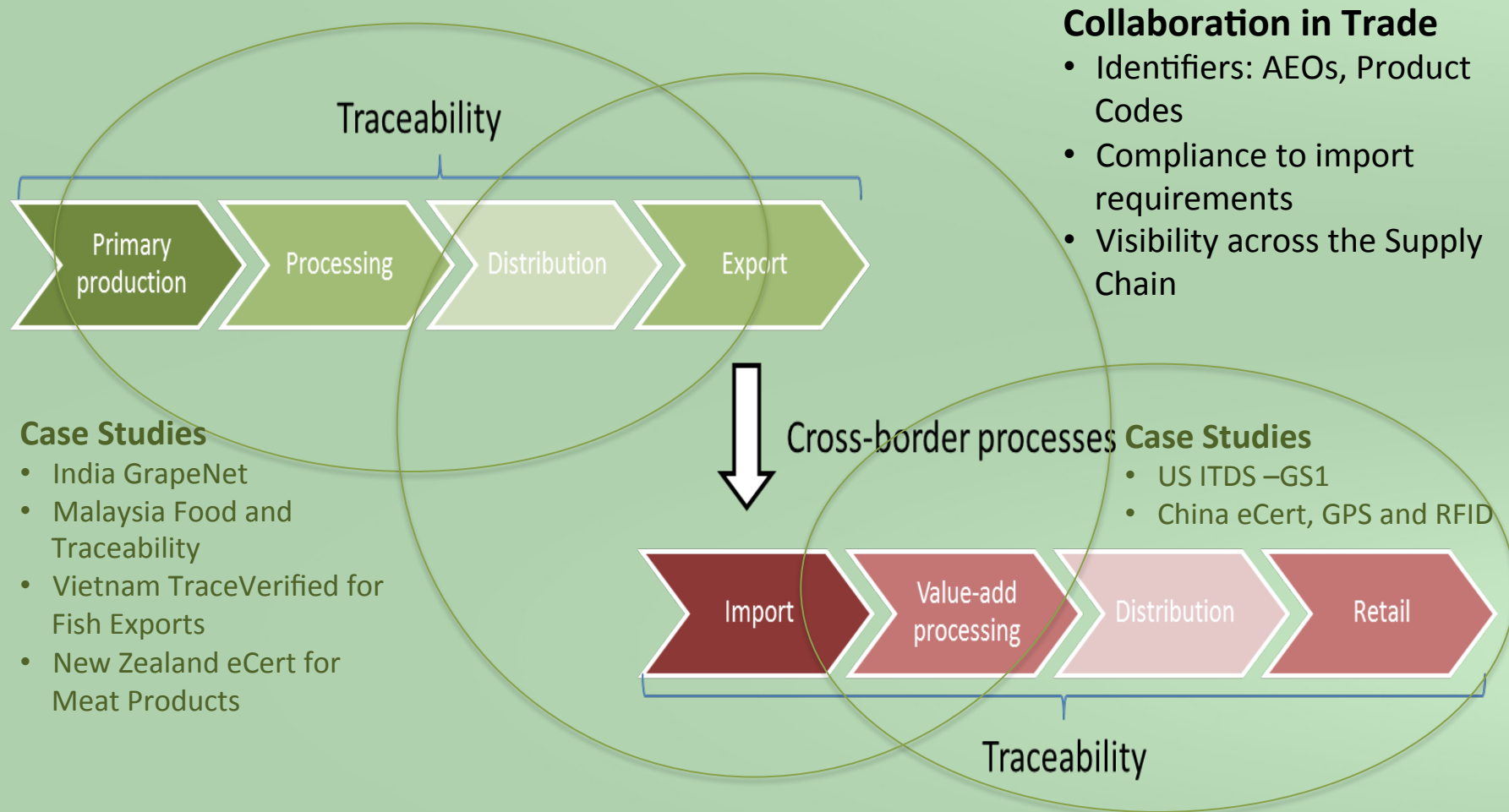
ELECTRONIC TRACEABILITY AND PAPERLESS TRADE FACILITATION

Francis Norman Lopez
InterCommerce

Agenda

- Introduction: Supply Chain and Traceability
- Automating Agri Import Processes in the Philippines
- Key Take Away

Typical AgriFood Supply Chain*



Case Studies

- **Export**

- India GrapeNet
- Malaysia Food and Traceability
- Vietnam TraceVerified for Fish Exports
- New Zealand eCert for Meat Products

- **Import**

- China Tianjin eCert, GPS-RFID
- US ITDS

- **Key Success Factors**

- Identification of source and products
- Specific testing procedures
- Export-Import collaboration to ensure Certification for compliance to import regulatory requirements
- Accessibility of data for transparency, monitoring and reports
- Government support, possibly with funding, for sustainability
- Tangible benefits to government and the private sector
- Cost effective technical solution

PH Agri Trade System: Background

- From 2002 to 2008, the Department of Agriculture (DA) had several attempts to automate their processes;
- Executive Order no. 482 dated 27 December 2005, creating the National Single Window Task Force
- In 2007, initial implementation of the PNSW using the Licensing and Clearance System of ASYCUDA
- In 2008, the DA issued directive harmonizing the import procedures of 3 agencies i.e. the Bureau of Animal Industry (BAI), the Bureau of Fisheries and Aquatic Resources (BFAR) and the Bureau of Plant Industry (BPI)
 - *The Proposal BIMP-EAGA Pilot electronic Cross Border Information Project led to the proposal to automate the SPS Import Clearance Procedures for the 3 DA Agencies*
- In 2009, Pilot Implementation of the SPS Import Clearance
- In 2010, mandatory implementation of SPS Import Clearance and subsequently followed by the MAV/MAV Import Certificate, Request for Inspection (1st Border) and Veterinary Quarantine, Meat Inspection and Laboratory Certificate

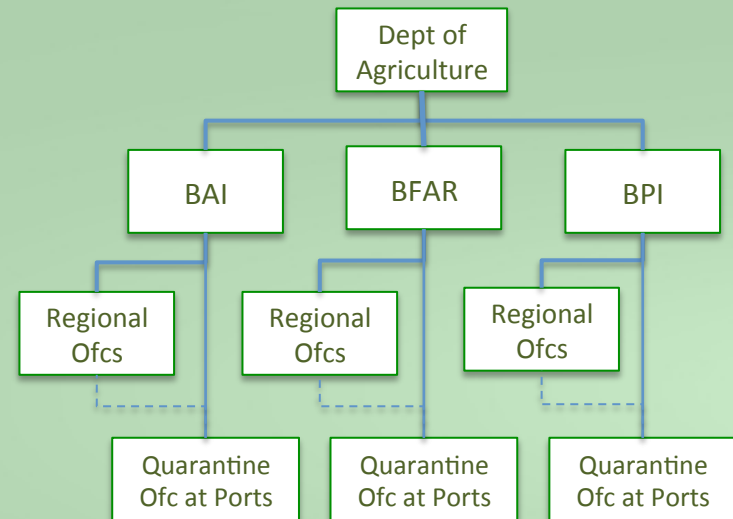
PH Agri Import Procedures – before 2010

- Centralized manual processes done at Head Offices, in Metro Manila
 - Accreditation/registration of importers and cold storage warehouse
 - Submission of application, processing and approval of SPS Import Clearance (SPS/IC)
 - Minimum Access Volume (MAV) allocation and issuance of MAV Import Certificate
 - Request for transfer of delivery of imported meat products to another cold storage warehouse
 - Manually accomplished (hand written) Request for Inspection and issuance of the Veterinary Quarantine, Meat Inspection and Laboratory Certificate and Inspection Report (including verification of SPS Certificates and other import documents)
- Consider 3,400 importers of agri products, average 500 import shipments daily in 57 international ports, with 200 cold storage warehouses



Challenges in Manual Processes

- Qualifying importers, suppliers and exporters for accreditation and registration
- Identification and classification of commodities, products
- Document submission, verification, authentication and storage
 1. Certificate of Product Registration
 2. SPS Import Clearance
 3. MAV Allocation and Import Certificate
 4. SPS Certificates eg Health and Phyto Certificates
 5. Commercial Invoice
 6. AWB/BL
 7. Import Declaration
 8. Port Quarantine Inspection Report/VQMILC
 9. Certificate of Meat Inspection
- Collection/payment of fees and issuance of receipts
- Monitoring transport and cargo handling
- Traceability from source to consumer
- Profiling and Risk Management
- Generating timely and accurate statistics



Regulated Commodities, Products

- **Bureau of Animal Industry (BAI)**
 - Live Animals, for breeding and as pets
 - Animal Product and By-Products, eg. Beef, Pork, Chicken and other Meat Products
 - Feed and Feed ingredients, Supplements
 - Veterinary Drugs, Additives, Supplements
- **Bureau of Plant Industry (BPI)**
 - Plant, including ornamentals
 - Plant Products eg flowers, grains, fruits and vegetables
 - Planting Materials
- **National Meat Inspection Service**
- **Bureau of Fisheries and Aquatic**

预览已结束，完整报告链接和二维码如下：

https://www.yunbaogao.cn/report/index/report?reportId=5_5006

