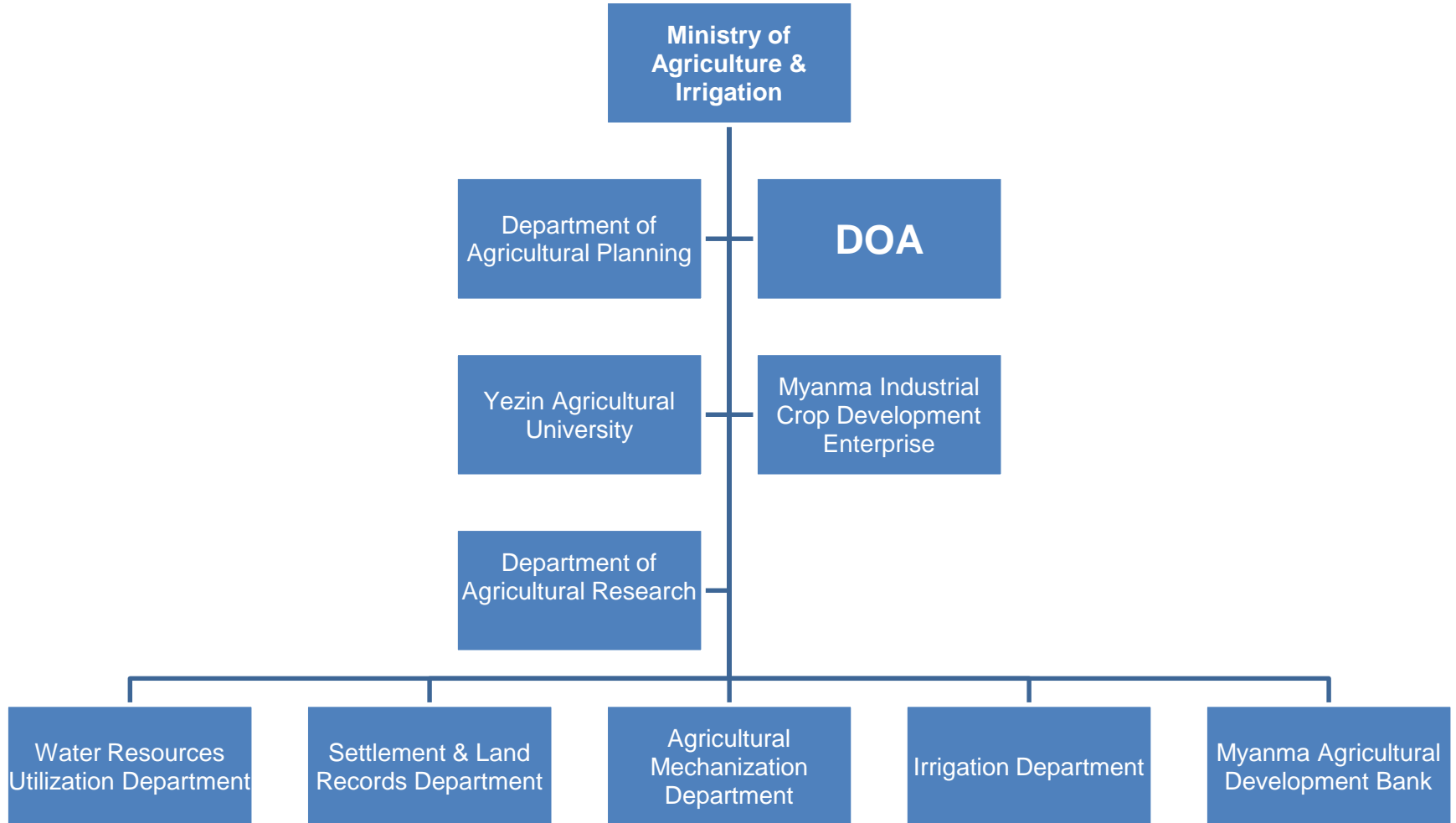




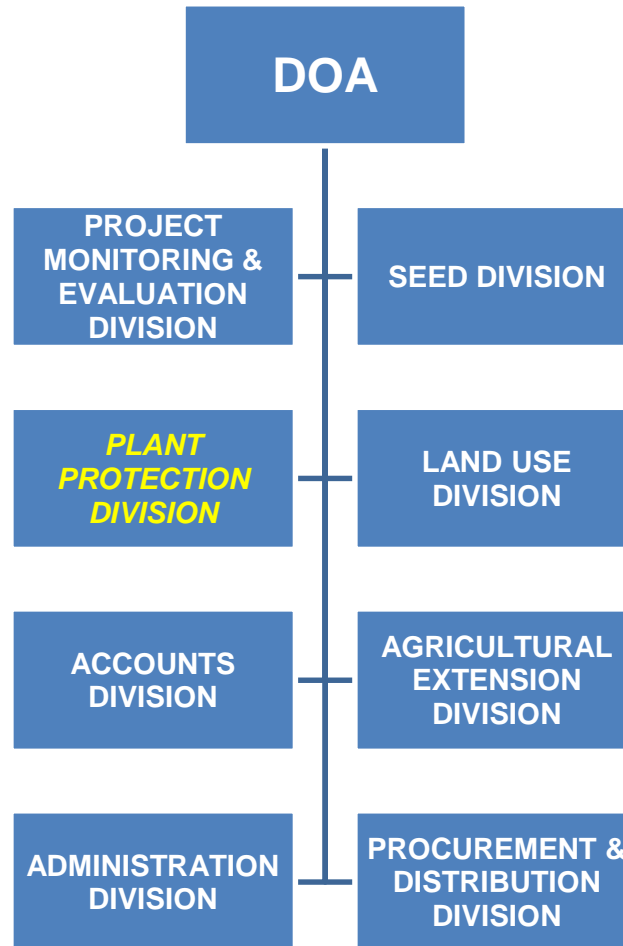
# Sanitary and Phytosanitary

Pyone Pyone Kyi  
Plant Protection Division

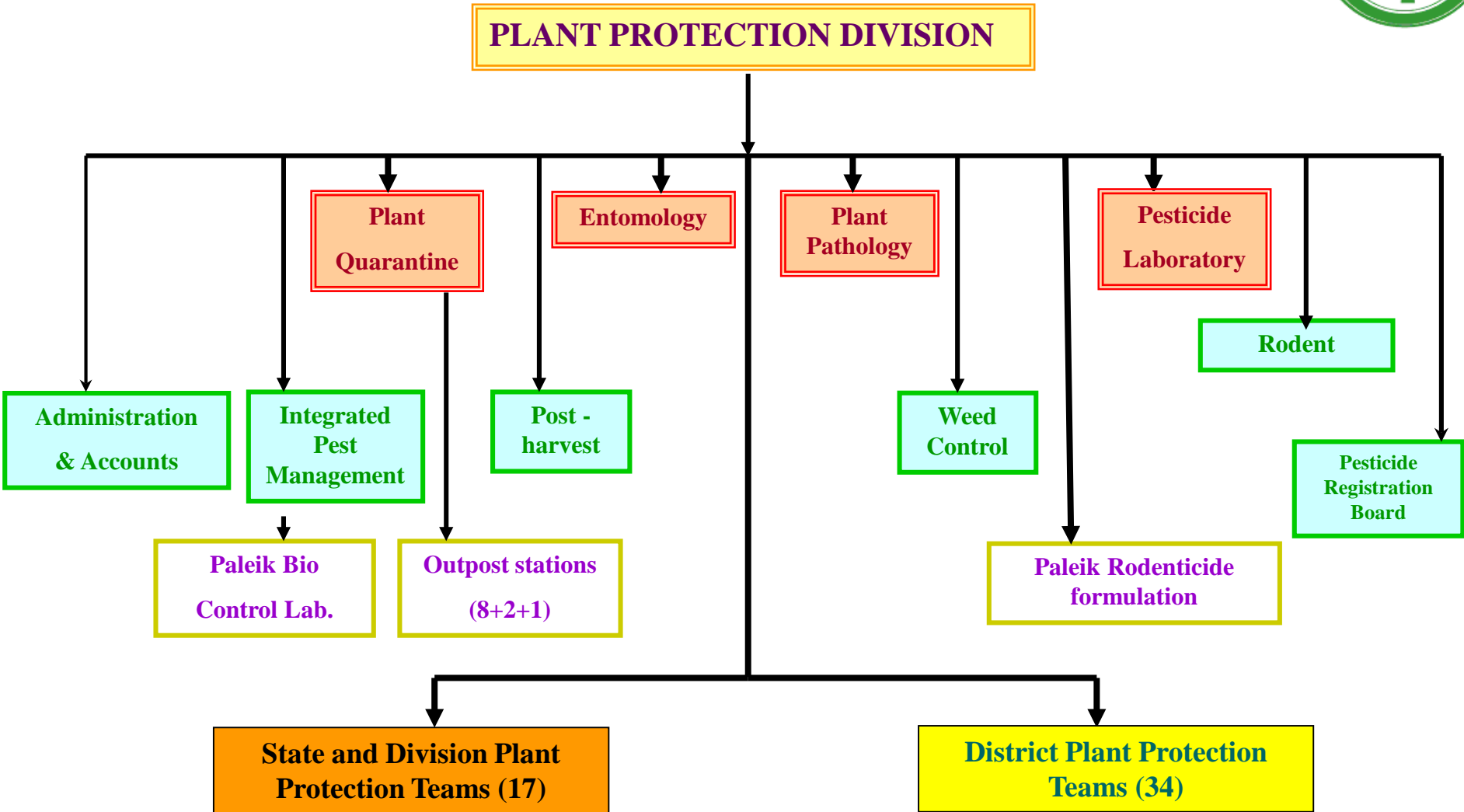
# ORGANIZATIONAL CHART OF THE MINISTRY OF AGRICULTURE & IRRIGATION



# STRUCTURE OF DEPARTMENT OF AGRICULTURE



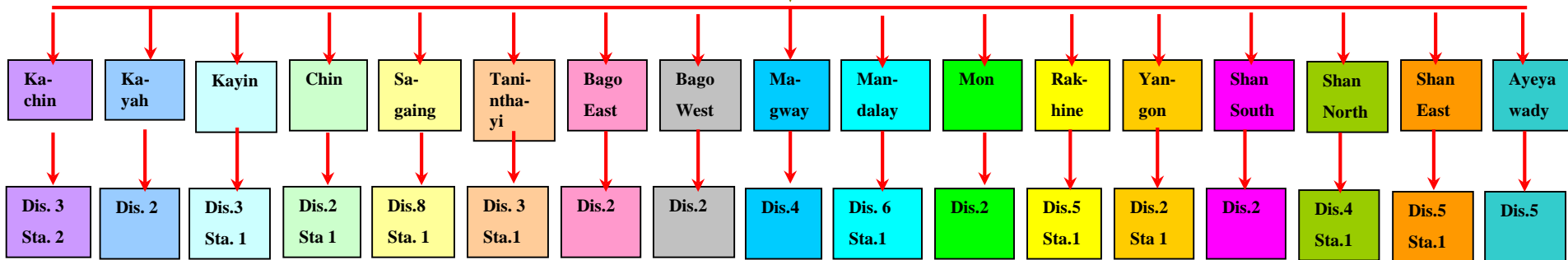
# ORGANIZATION CHART OF PLANT PROTECTION DIVISION





## State and Division Plant Protection Teams (17)

### District PP Teams (34) , Quarantine Stations (11)





# WTO & SPS

- Myanmar : Member of WTO and commits to WTO Agreement on SPS measures
- S: Sanitary for human and animal health
- PS : Phytosanitary for plant health

For Sanitary, certificate of pesticide residue analysis, Aflatoxin and Heavy metal contaminant in Agricultural commodities is issued by PAL.



# Sanitary & Phytosanitary (SPS)



**Sanitary**



**Food Safety**



**Agrochemical Residue in food crops**



**Agrochemical**



**Pesticides require to control of plant injurious pests**



**Fertilizer require for high yield of crops**



# Sanitary & Phytosanitary (SPS)



Phytosanitary



Plant Health



Protect Plant Health



Plant Quarantine



The by law prohibition of exotic pest entering an area



预览已结束，完整报告链接和二维码如下：

[https://www.yunbaogao.cn/report/index/report?reportId=5\\_5313](https://www.yunbaogao.cn/report/index/report?reportId=5_5313)

