



REGIONAL WORKSHOP ON "GEO-REFERENCED  
INFORMATION SYSTEM FOR IMPROVING DISASTER  
RISK PREPAREDNESS AND MANAGEMENT IN ASIA AND  
THE PACIFIC"



*June 26-27, 2014y., Meeting room G, UNCC building, Bangkok, Thailand*

## **PROSPECTS OF USE Geoportal In the KYRGYZ REPUBLIC**

**Reporter: Mr. N. Nurdinov**

**OVER THE LAST  
10 YEAR:  
DIED PEOPLE –  
478 THOUSAND  
LIVES**



**OVER THE LAST  
10 YEAR:  
AFFECTED 2.5  
BILLION PEOPLE**



**OVER THE LAST 10  
YEAR:  
CAUSED DIRECT  
ECONOMIC LOSSES  
IN THE AMOUNT OF  
690 BILLION \$ US**



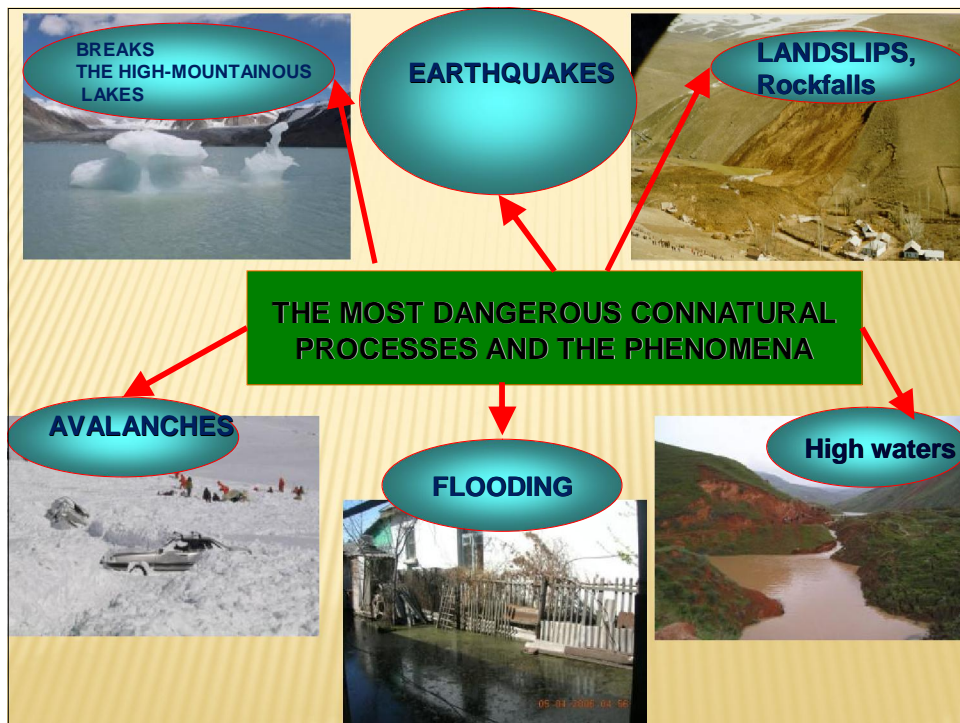
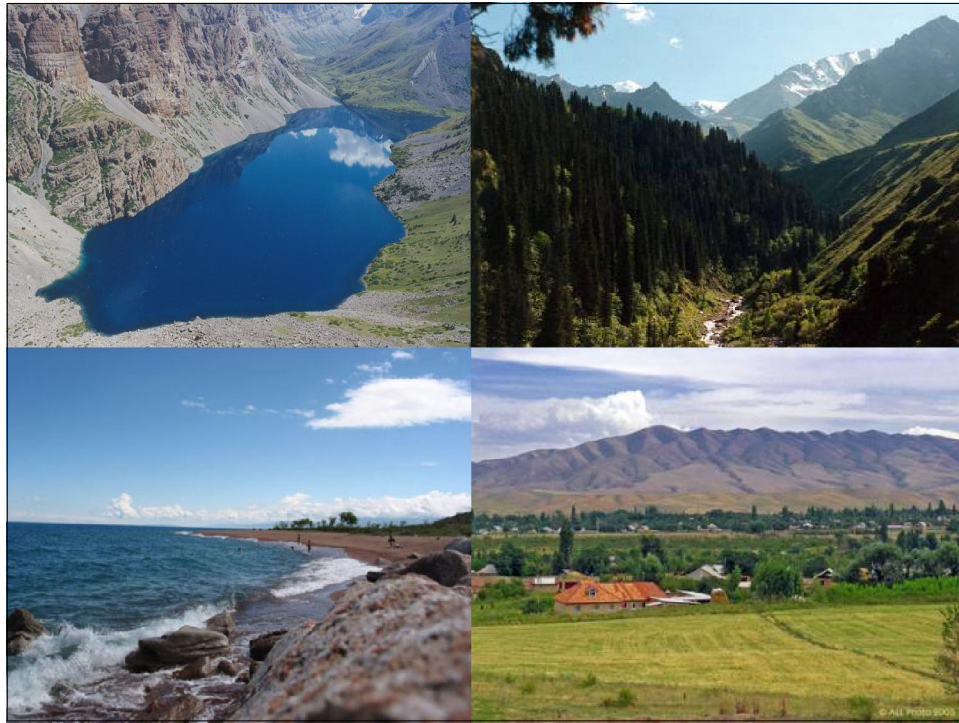
## Kyrgyz Republic



Total area of the country is 198,8 thousand square kilometers. 98% of the territory is located at 1000 meter above the sea level.

Out of 70 varieties of dangerous natural disaster common in the world, almost all are frequent in the Kyrgyz Republic (except for volcanoes, tsunamis, typhoons). Over than 14000 dangerous zones.





## Damage from emergency situations

Budget financing on prevention and liquidation of emergency situations is 6 million \$

Annual direct damage from emergency situations  
30 – 35 million \$

Financial and material losses from emergency situations exceed real possibilities of system of protection the population more than in 5 times.



Creation and development of information-managing system of forecasting, the early notification, the prevention and liquidation of consequences of extreme and crisis situations in the Kyrgyz Republic



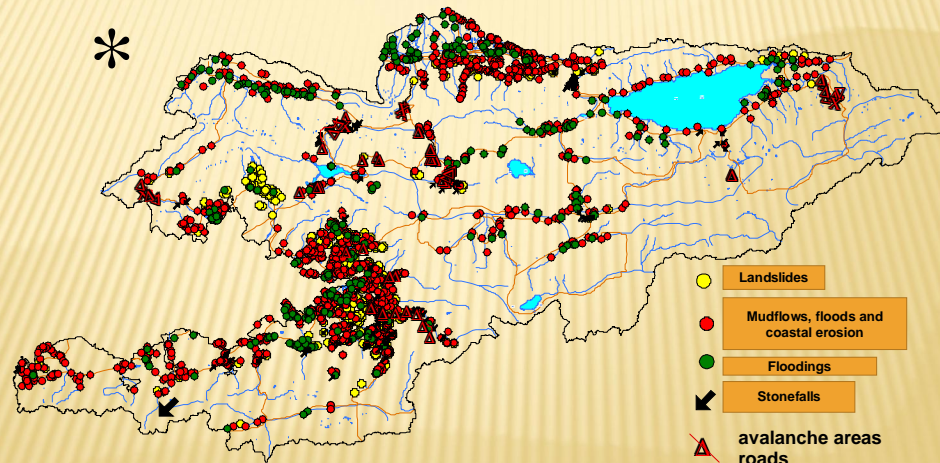
## Uniform Information-managing system(UIMS)



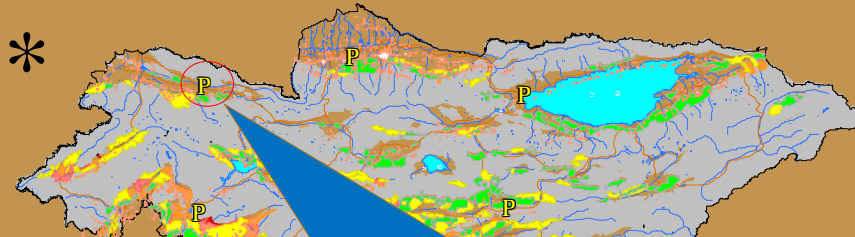
## GEOINFORMATION TECHNOLOGIES IN EMERGENCY MANAGEMENT



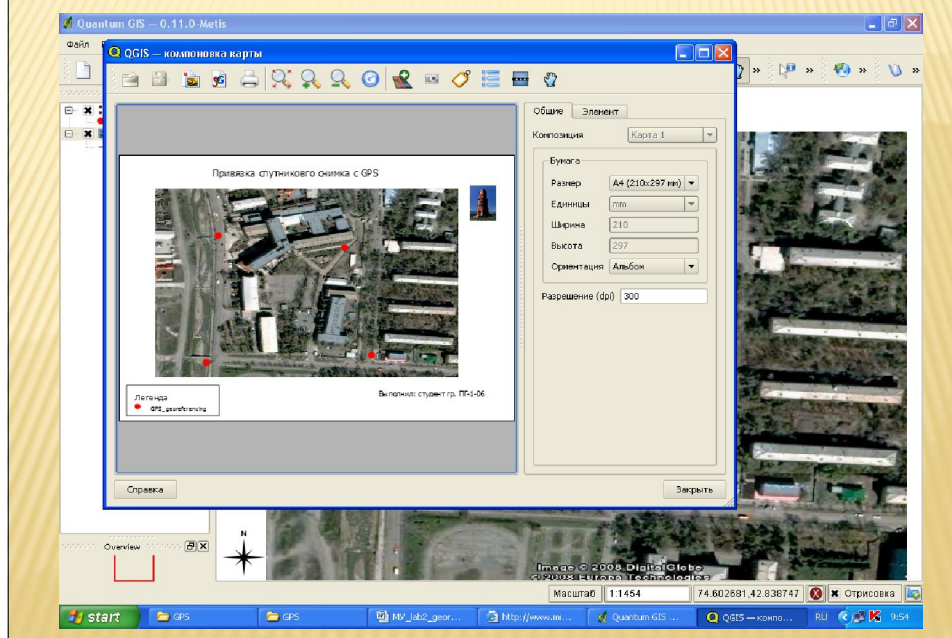
Schematic map of the spread of dangerous natural phenomena and processes in the territory of the Kyrgyz Republic



Map of the layout and structural subordinate emergency services in the territory of the Kyrgyz Republic

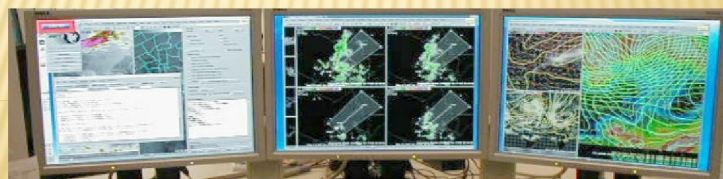


## GEOSPATIAL BINDING SATELLITE IMAGERY

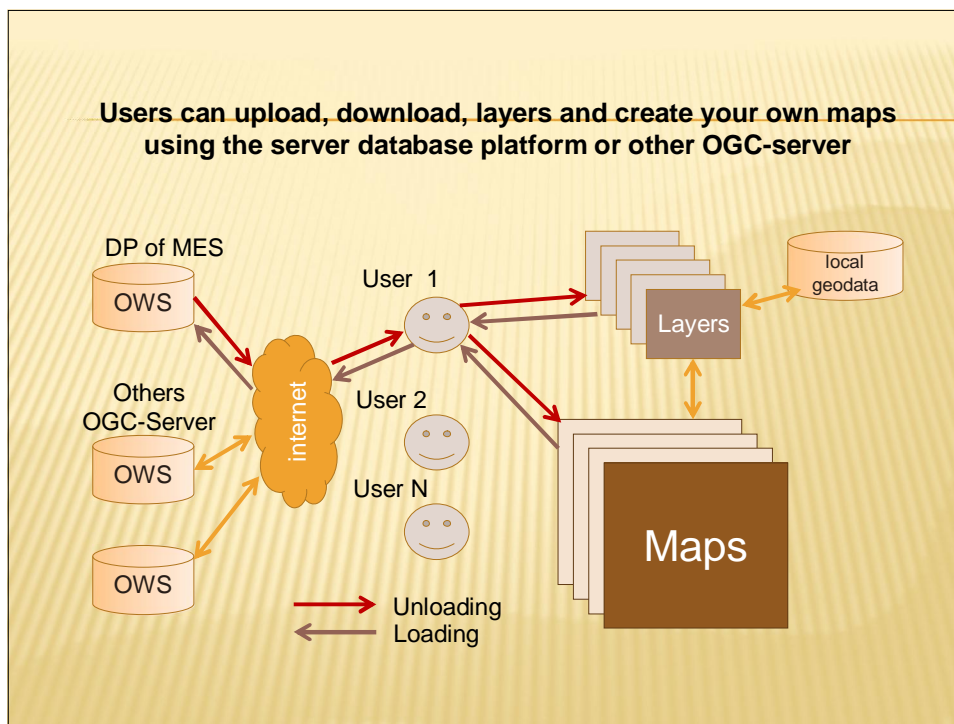


## CREATION A DATABASE PLATFORM FOR DISASTER RISK MANAGEMENT IN KYRGYZSTAN

Based on the program Geo Node







## DATABASE PLATFORM FOR DISASTER RISK MANAGEMENT

**Server of Platforms Data**  
PowerEdge R720



**Home Site of Data Platform**  
<http://geonode.mes.kg/>



预览已结束，完整报告链接和二维码如下：

[https://www.yunbaogao.cn/report/index/report?reportId=5\\_5381](https://www.yunbaogao.cn/report/index/report?reportId=5_5381)

