



Practices of Using Geo-referenced Information for Disaster Risk Reduction in Indonesia

Presented by:
Suwarsono

Presented on
"Expert Group Meeting (EGM) on Geo-referenced Information Systems for Disaster Risk
Management (Geo-DRM) and Sustaining the Community of Practice"
23-25 April 2014, Bangkok, Thailand

**CENTER FOR REMOTE SENSING APPLICATION
INDONESIAN NATIONAL INSTITUTE OF AERONAUTICS AND
SPACE
(LAPAN)**



Introduction

About **LAPAN**
(INDONESIAN NATIONAL INSTITUTE OF AERONAUTICS AND SPACE)

§ LAPAN as Indonesian Space Agency was established on November 27, 1963 by Presidential Decree No.236 of 1963

§ LAPAN role reinforced by the presence of the Law No.21 of 2013 (Indonesian Law on Space).

§ LAPAN has authorities on:
1) Space science,
2) Remote sensing,
3) Space technology mastery,
4) Launch, and
5) Space commercial activities





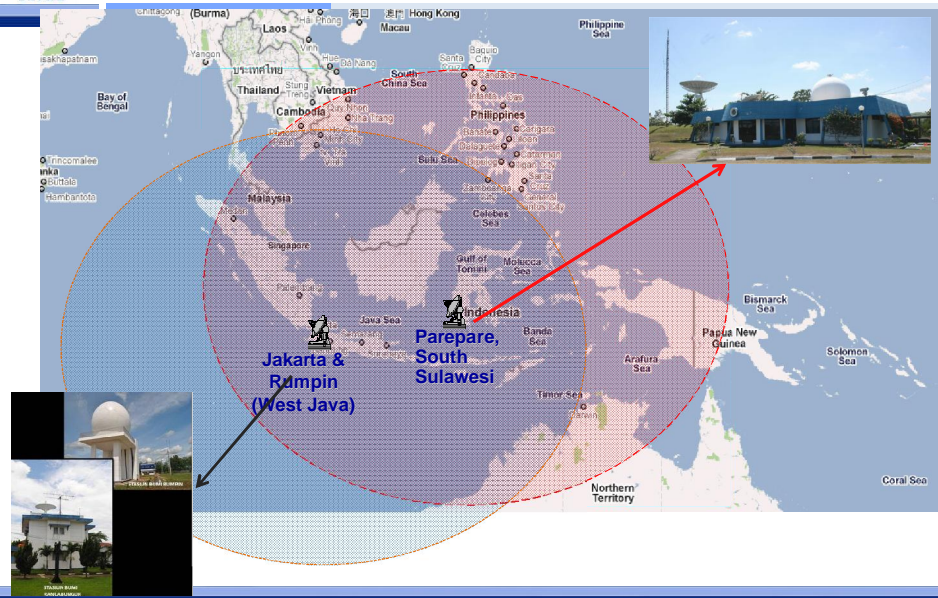
Introduction

§ In the field of remote sensing **LAPAN** responsible for:

- 1) Data acquisition,
- 2) Data processing,
- 3) Data storage and distribution,
- 4) The use of data, and
- 5) Dissemination of information



Data Acquisition – Ground Station



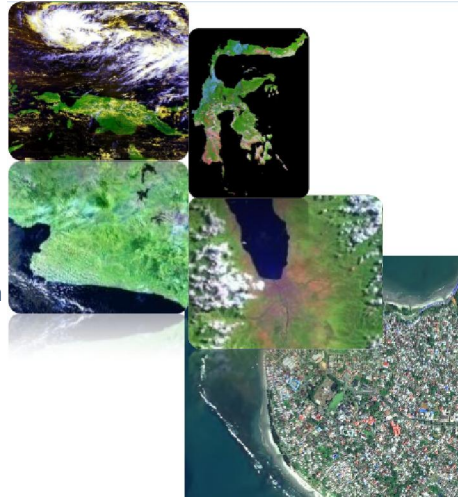


LAPAN RS Data Acquisition

- ✦ **Low Resolution (> 30 meter):**
 - § Terra dan Aqua
 - § NPP
 - § NOAA/AVHRR
 - § Feng Yun
 - § MTSAT/Himawari

- ✦ **Medium Resolution (4 – 30 meter):**
 - § Landsat-7
 - § Data LDCM/Landsat-8 (start from June 2013)
 - § SPOT-4

- ✦ **High Resolution (< 4 meter):**
 - § SPOT-5 dan SPOT-6



Landsat Catalog

<http://116.66.201.60:8001/Catalogue>

landsat catalogue POWERED BY pihimatter

Search Details Basket Coverage

Mission
 Landsat Select a mission to see the product options.

Spatial Coverage

Upper Left
Lat: 7.0000 Long: 92.4873

Lower Right
Lat: 7.1166 Long: 93.0000

Temporal
From: 2013-01-01 To: Today
To: 2013-07-30 The Month The Year Custom

Cloud Cover



SPOT-5 / 6 Catalog

Bank Data Penginderaan Jauh Nasional
Pusat Teknologi dan Data Penginderaan Jauh - LAPAN

Welcome, Guest
Item Basket (0)

Search Criteria Data Sets Result

1. Enter Search Criteria
To narrow your search area, type in an address or place name, enter coordinates or click the map to define your search area, and/or choose a date range.

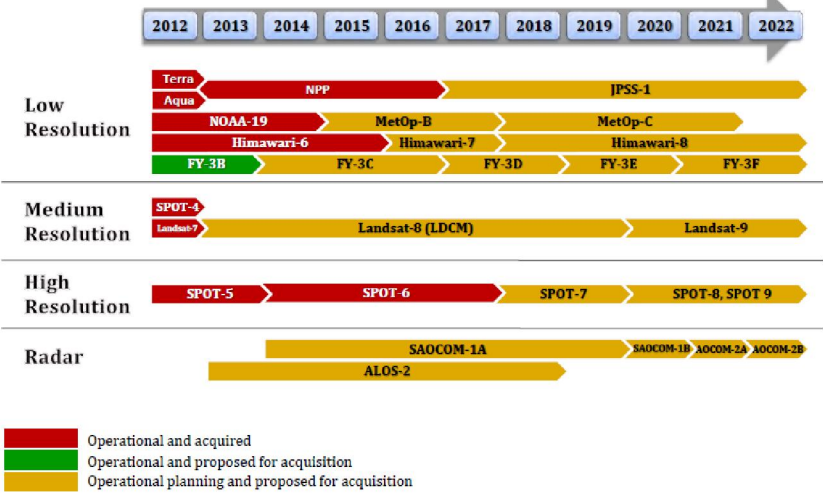
Address/Place Path/Row
Type Address/Place here
Show Clear

Coordinates Prefined Area
Degree/Minute/Second Decimal
Use Map Add Coordinate Clear Coordinate

Date Range Result Options
Search From 1995-02-14 To 2013-07-29
Search Months Select Month
JANUARY FEBRUARY MARCH APRIL MAY JUNE JULY AUGUST SEPTEMBER OCTOBER NOVEMBER DECEMBER

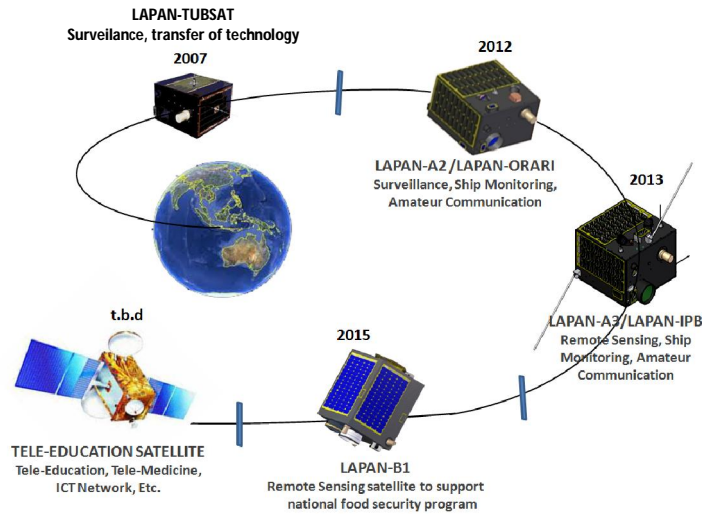


Roadmap of Satellite Data Acquisition (2012-2022)



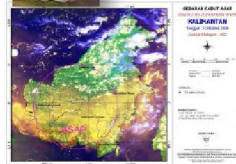


Roadmap of Indonesian Satellite Development



RSGIS for Disaster Management

- § Dealing with Disaster, LAPAN committed to provide the space-based information especially in the context of preparedness and emergency response.
- § In order to support space-based disaster information, LAPAN coordinates with the Indonesian National Board for Disaster Management (BNPB) and another stakeholder agencies (both national and international)
- § LAPAN have implemented several projects in the field of disaster management and emergency response such as flood, drought, fire hotspot, climate monitoring and prediction, as well as the assessment of those disasters and emergency response for other catastrophes such as landslide, tsunami, earthquake, and volcanic eruption.
- § LAPAN was established as Regional Support Office of UNSPIDER since February 19, 2013.





Types of Disaster in Indonesia



FLOOD



FOREST/LAND FIRE



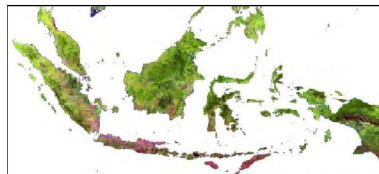
DROUGHT



EPIDEMIC



LANDSLIDE



TECHNOLOGY FAILURE



EARTHQUAKE



TSUNAMI



VOLCANIC



SOCIAL CONFLICT



Integrated Disaster Information System in Indonesia – *on going*





LAPAN geoportal

www.lapan.go.id

LINK TO :

- § National Remote Sensing Databank
- § Landsat Data Catalog
- § MODIS Catalog
- § Climate Variability
- § Sun Activities
- § Greenness Vegetation
- § Weather Extreme
- § Space Object Fall
- § SIMBA website



LEMBAGA PENERBANGAN DAN ANTARIKSA NASIONAL
National Institute of Aeronautics and Space of Indonesia

Home Profile Information Performance Output Space Education PPID Multimedia Contact Site Map Email



Tanggal Penting
- 15 Feb - Bulan penerbangan proposal
- 15 Feb - Evaluasi Tahap I
- 20 Feb - Pengumuman Tahap I
- 28 Mar - Bulan penerbangan bapenas
- 28 Mar - Evaluasi Tahap II
- 28 Mar - Pengumuman pemenang
- 16 Apr - Workshop Peserta Nasional
- 16-18 Jun - Pelaksanaan Kompetisi

INFORMATION SERVICES

MAIN PILLAR

--	--	--

NEWS

20-04-2014

Readmore...

Developed by: LAPAN



SIMBA CENTER - LAPAN (Information System for Disaster Mitigation)

DAILY INFORMATION

- § Cloud Coverage (TRMM, Qmorph)
- § Forest Fire (Fire Hotspot and FDRS)
- § Flood Prediction
- § Oceanic parameter (LST and Chlorophil)

MONTHLY INFORMATION

- § Monthly Rainfall accumulation
- § Monthly Forest Fire (Fire Hotspot and FDRS)
- § Monthly Flood Prediction
- § Fishing Ground
- § Food Security

EMERGENCY RESPONSE

- § VOLCANO, LANDSLIDE, FLOOD, SMOKE AND FOREST FIRE, EARTHQUAKE, TSUNAMI

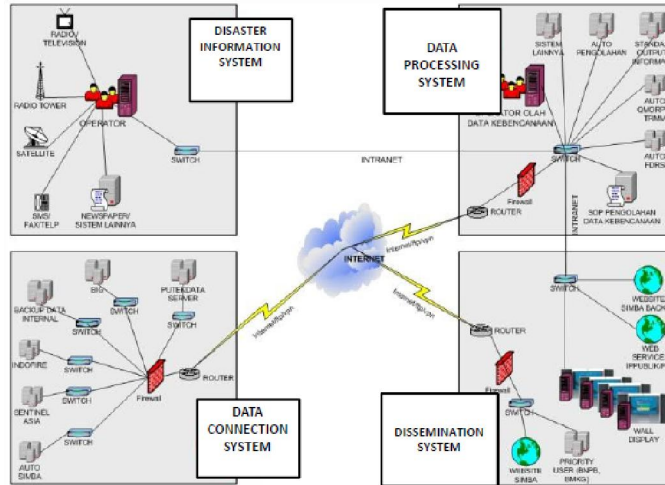
Developed by: LAPAN

The screenshot shows the SIMBA (Information System for Disaster Mitigation) website. It features a navigation menu at the top, a main content area with several data panels, and a sidebar. The main content area includes a map of Indonesia with a red dot indicating a location, and several smaller maps and data visualizations. The sidebar contains a search bar and a list of categories. The website is designed with a clean, professional layout and uses a color scheme of blue and green.



SIMBA CENTER - LAPAN (Information System for Disaster Mitigation)

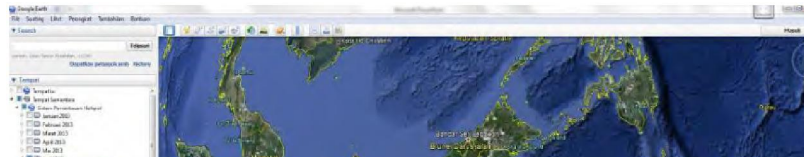
DESIGN OF SIMBA CENTER



Developed by: LAPAN



INTEGRATION TO GOOGLE EARTH



预览已结束，完整报告链接和二维码如下：

https://www.yunbaogao.cn/report/index/report?reportId=5_5478

