



**National Committee for Disaster
Management (NCDM)**

Cambodia Disaster Management Information System

Sophak PHOEUN,

*National DRR Forum Coordinator &
Executive Assistant to Vice President of NCDM,
National Committee for Disaster Management.*

Outline

- 1. About Cambodia**
- 2. Overview of disaster Hazards & Impacts**
- 3. Disaster management system**
- 4. Dissemination of Forecasting and Early Warning Information**
- 5. Disaster Management Information System**
- 6. Challenges**
- 7. Suggestions**



I. About Cambodia



- Country Name : **Kingdom of Cambodia**
- Population : 15 Million (UN, 2010)
 - Urban : 19.5%
 - Rural : 80.5%
- Growth Rate : 1.35% (2010)
- Density : 83 Per. Sq. Km
- Capital : Phnom Penh
- Area : **181,035 Sq Km**
- Province/Capital : 25
- Major Language : Khmer
- Major Religion : Buddhism
- Currency : Cambodian Riel ()
- Bordered By :
 - Thailand to the West
 - Lao PDR to the North
 - Viet Nam to the East
 - Gulf of Thailand to the South

II. Overview of Disaster Hazards & Impacts

Cambodia is considered as the 8th country the most prone to natural disasters in the world (*the World Risk Index, 2012*).

- § **Flood**
- § **Drought**
- § **Storm**



Flood

In 1996:

- **2,029,748 people affected.**
- 250,218 ha of crops damaged.
- 3,768 homes damaged
- Total damages: US\$85.7 M.



In 2000:

- **347 people died, 80% children.**
- 3,448,629 people affected.
- 317,975 homes damaged.
- Total damages: US\$ 150 M.



Flood

In 2001:

- 14 provinces, 84 districts, 595 communes.
- **62 people died, 70% children.**
- 2,251 homes destroyed.
- Total damages: US\$36 M.



In 2002:

- 7 provinces, 41 districts.
- **29 people died.**
- 40,027 ha of rice crops affected
- 1,082 homes destroyed.
- Total damages: US\$19 M.



Flood

In 2011:

- 18 provinces, 122 districts, 687 communes.
- **250 people died, 70% children.**
- 1297 homes damaged.
- Total damages: US\$520 M.



In 2013:

- 20 Capital and provinces; 132 Districts; 770 Communes.
- **168 people died, 44% Children.**
- 231,484 homes affected, 287 damaged.
- Estimated cost: **more than US\$500 M**



Drought

- § Some areas face to drought every year
- § A short dry spell: 20 to 30 days in July or August
(Middle of rainy season/farming season).



§ In 2002-2004 experienced in large scale:

- 2,047,340 people affected.
- 62,702 ha of rice crops damaged.
- Total damages: US\$ 55.3 M.

Year	Impacted Element	Affected	Damaged
2002-2004	Areas affected: 10 provinces, 76 districts, 420 communes		
	People	2,047,340	
	Family	442,419	
	Rice crops		62,702 ha
	Total damages is US\$ 55.3 M		

§ **In 2013**

§ 30 ha of rice crops damaged.

§ 11,764 ha of rice crops affected.

§ 1,520 ha of rice crops rescued.

Year	Impacted Element	Affected	Damaged	Rescued
Sep 05, 2013	Areas affected: 3 provinces, 10 districts			
	People			
	Family			
	Rice crops	11,764 ha	30 ha	1,520ha

Storm - Typhoon Ketsana

Year	Impacted Element	Died	Injured	Affected
Sep 2009	Areas affected: 14 provinces, 73 districts, 336 communes			
	People	43	67	180,000
	Total affected: US\$ 132 M			



Source: NCDM, 2009

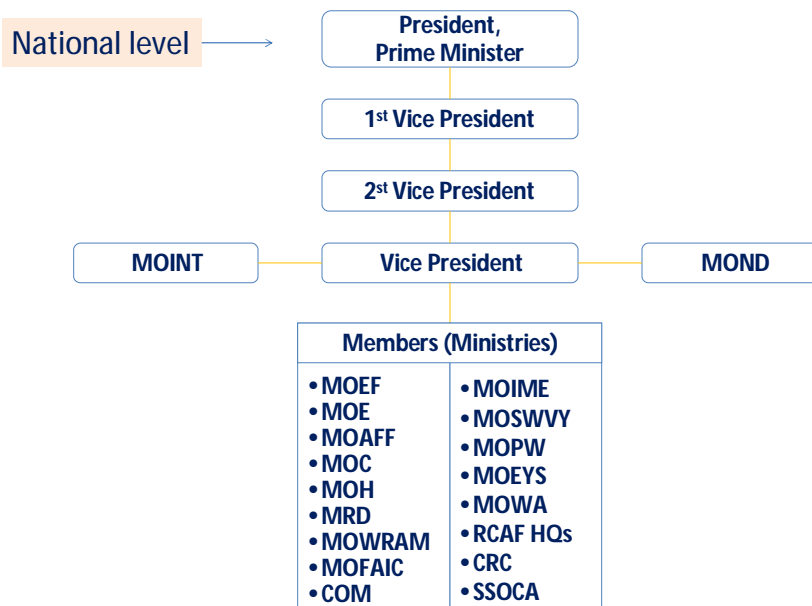
Storm Report in 2013

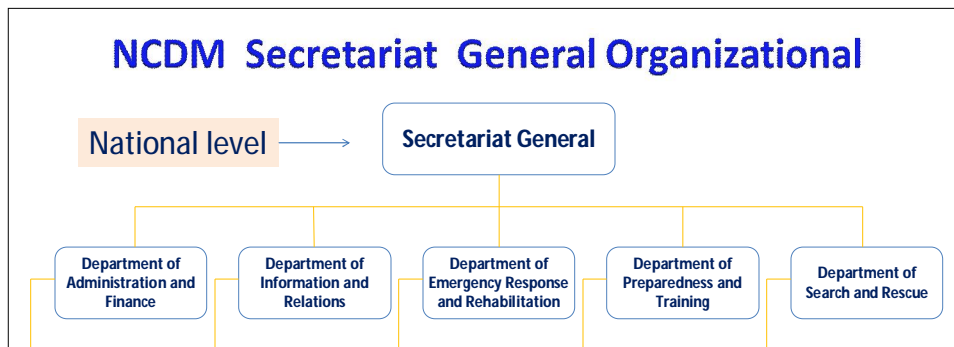
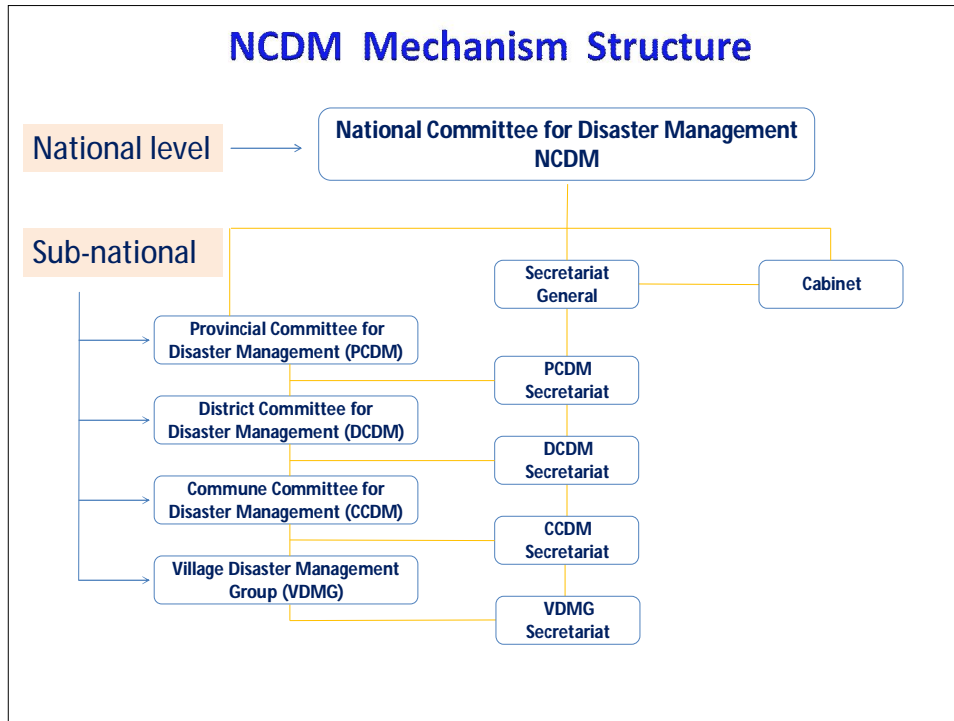
Year	Impacted Element	Died	Injured	Damaged
By Sep 05, 2013	Areas affected: 111 districts, Occurred: 154 times			
	People	29	110	
	Homes			8,224
	Schools			45
	Other buildings			12

III. Disaster Management System in Cambodia

- Disaster Management in Cambodia
- National mechanism structure
- Sub-national mechanism structure

Disaster Management in Cambodia





预览已结束，完整报告链接和二维码如下：

https://www.yunbaogao.cn/report/index/云报告?reportId=5_5488



云报告
https://www.yunbaogao.cn

云报告
https://www.yunbaogao.cn

云报告
https://www.yunbaogao.cn