

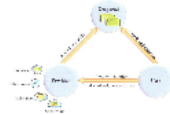
Web GIS for Natural Disaster Mitigation Management and Rehabilitation

- Contents
1. About WebGIS
 2. Web GIS for Natural Disaster Mitigation Management and Rehabilitation
 3. How to set up a WebGIS

Geoportals (Management, Rehabilitation)

Geoportals are natural or as a spatial context, is a web site that provides a single point of access to geospatial data, services, and other geospatial related resources. For more details, a geoportals is a web site where geospatial resources can be discovered.

Geoportals Architecture



Geoportals Uses



Essential Information to put on a Geoportals

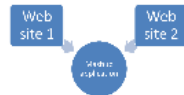
- Geodetic control
- Ortho-imagery
- Elevation
- Transportation
- Hydrography
- Governmental Units
- Cadastral Information

Geoportals Examples

How to setup a Geoportals

Geospatial Mashups

The mashup, a hallmark of web 2.0, is a genre of interactive web applications that seamlessly integrate content retrieved from diverse web based resource to create innovative applications



A geomashup is a mashup where at least one of contents or functions is geo-referenced

Geomashup Example

PPGIS - Public Participation GIS Urban Sensing Crowd Sourcing

Sensor Networks

Small, low-cost sensors that collect data on environmental conditions and transmit it to a central location for analysis.



How to setup a Web GIS

Q & A

Geocollaboration

Geocollaboration or collaborative GIS means a group of people using GIS technology to create a collaborative working environment to complete the same task

- Spatially the collaborators can be either collocated or remotely located
- Temporally, the collaboration can happen synchronously (in real time) or asynchronously (at different times)

Geocollaboration Example

Web GIS for Natural Disaster Mitigation Management and Rehabilitation

Contents

1. What is Web GIS



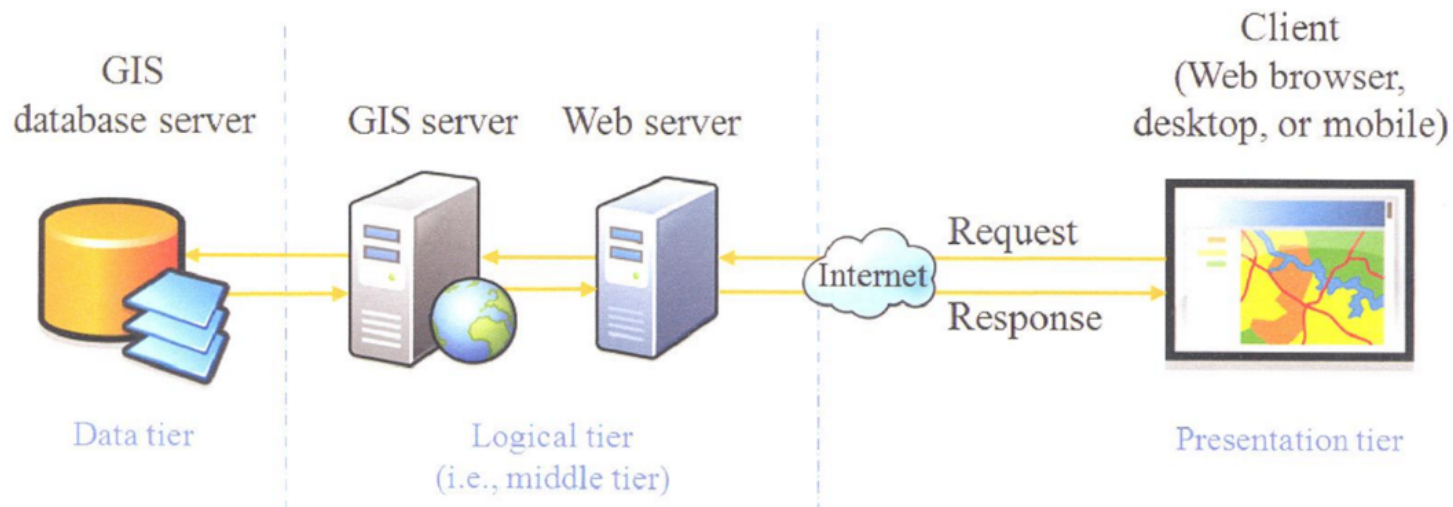
2. Web GIS for Natural Disaster

- Mitigation
- Management and
- Rehabilitation

3. How to set up a Web GIS

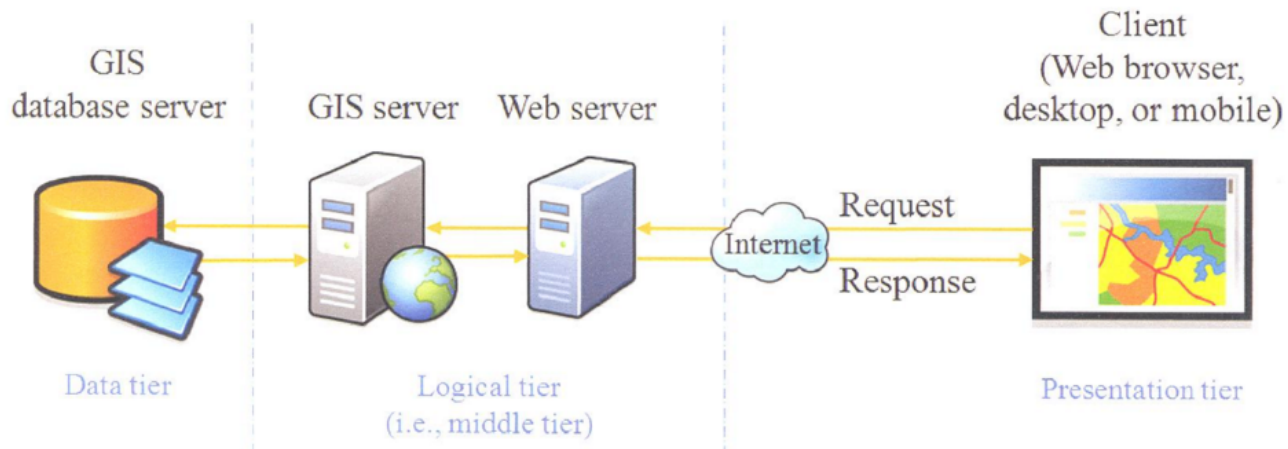


Web GIS is any GIS that uses Web technology to communicate between components



Thin Client Web GIS Systems

Thick Client Web GIS Systems



Traditional applications of Web GIS for NDMMR

Introduction to new Web GIS technologies

- **Geoportals**
- **Geomashups**
- **PPGIS / VGI**
- **Sensor Networks**

Geoportals (Management, Rehabilitation)

Geoportals: also referred to as a spatial portal, is a web site that provides a single point of access to geospatial data, web services, and other geospatially related resources.

Put more simply, a geoportal is a web site where geospatial resources can be discovered

预览已结束，完整报告链接和二维码如下：

https://www.yunbaogao.cn/report/index/report?reportId=5_5789

