

# ESCAP-ITU Interactive Terrestrial Transmission Maps

Expert Consultation on the Asian Information  
Superhighway and Regional Connectivity

3 - 4 December 2013, Baku, Azerbaijan

Chris Emberson  
Paul Hamilton  
Hamilton Research Ltd

<http://www.itu.int/itu-d/tnd-map-public/>

Chris Emberson, Senior GIS Expert, ITU

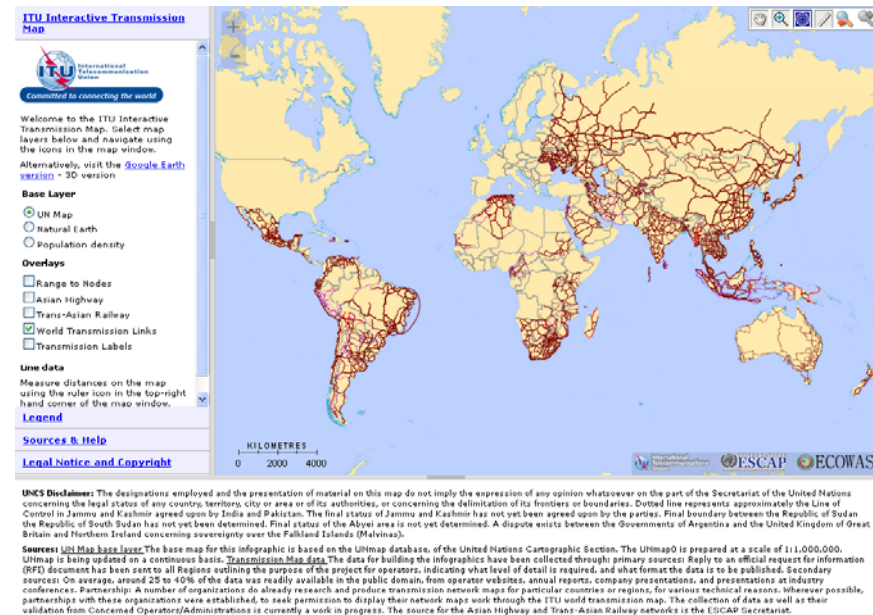
Mapping transmission networks in Asia-Pacific region

Technical architect – Interactive Transmission Map

Hamilton Research Ltd - ESCAP

Asian Highway, Trans-Asian Railway, UN Map data

# Introduction



## Broadband Transmission Capacity Indicators

Underneath the map is a database, containing records of each individual link. The following indicators are either compiled or calculated from this database:

**Indicator 1: Transmission network length (Route kilometres)**

**Indicator 2: Node locations**

**Indicator 3: Equipment type of terrestrial transmission network**

**Indicator 4: Network capacity (bit rate)**

**Indicator 5: Number of optical fibres within the cable**

**Indicator 6: Operational status of the transmission network**

**Indicator 7a: Percentage of population within reach of transmission networks**

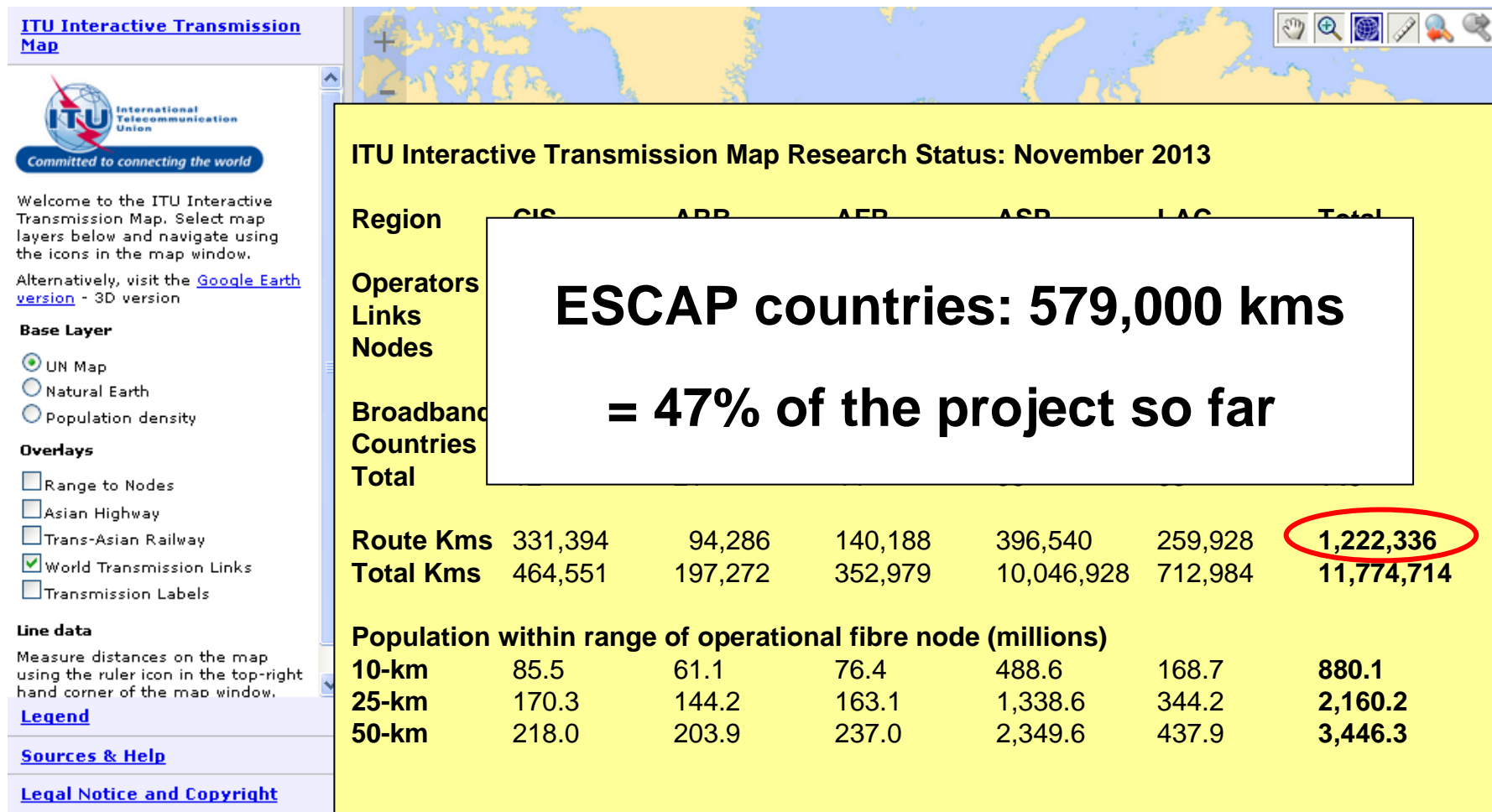
**Indicator 7b: Percentage of area within reach of transmission networks**

**1) Purpose:** To quantify supply-side indicators for the reach of broadband networks.

**2) Research:** Desk research, primary research in conjunction with ITU Regional Offices, and working with partner organisations.

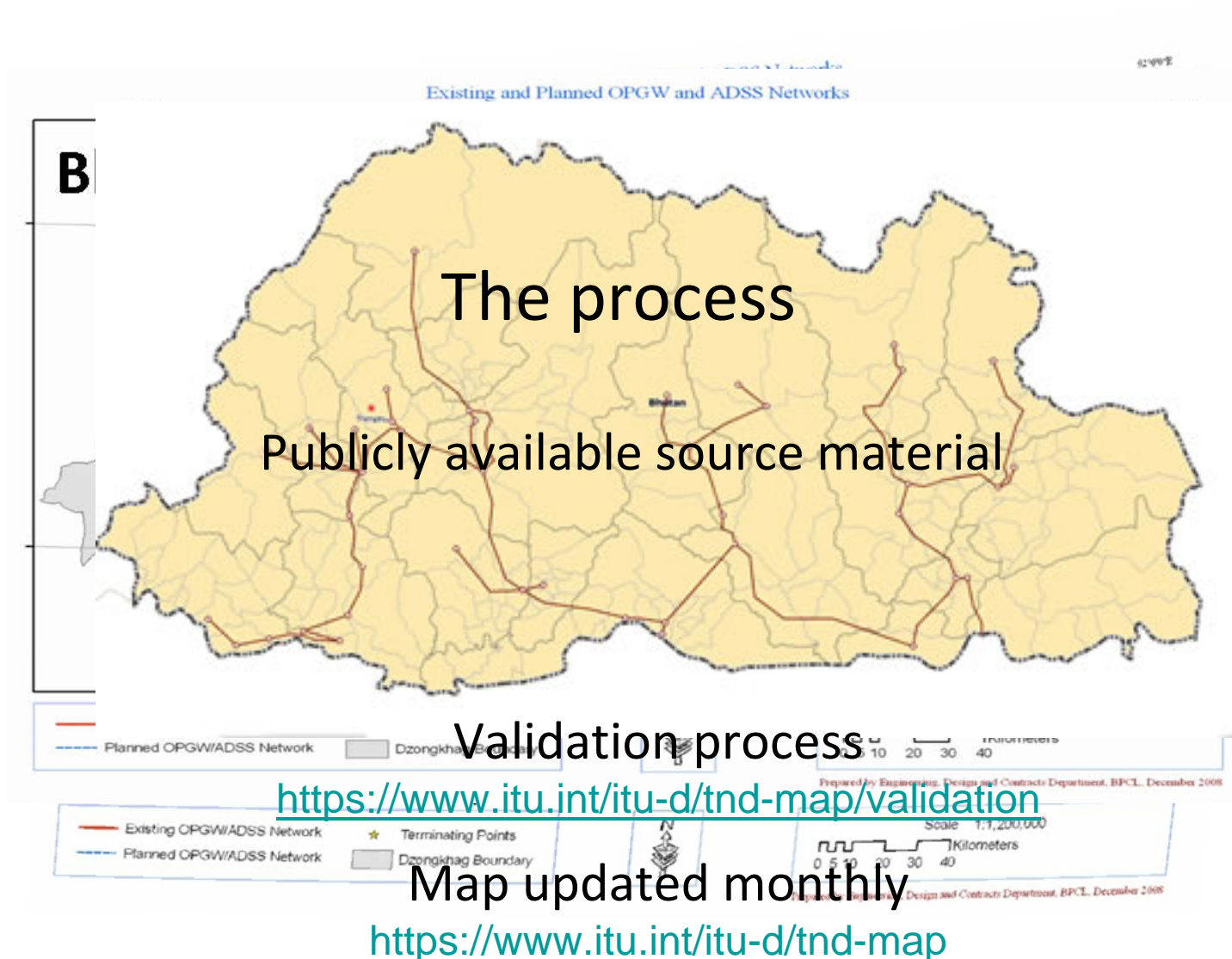
**3) Validation:** The map is validated by network operators and administrations through the ITU Regional Offices and recorded in the Validation Framework.

**4) Outputs:** Broadband Capacity Indicators.

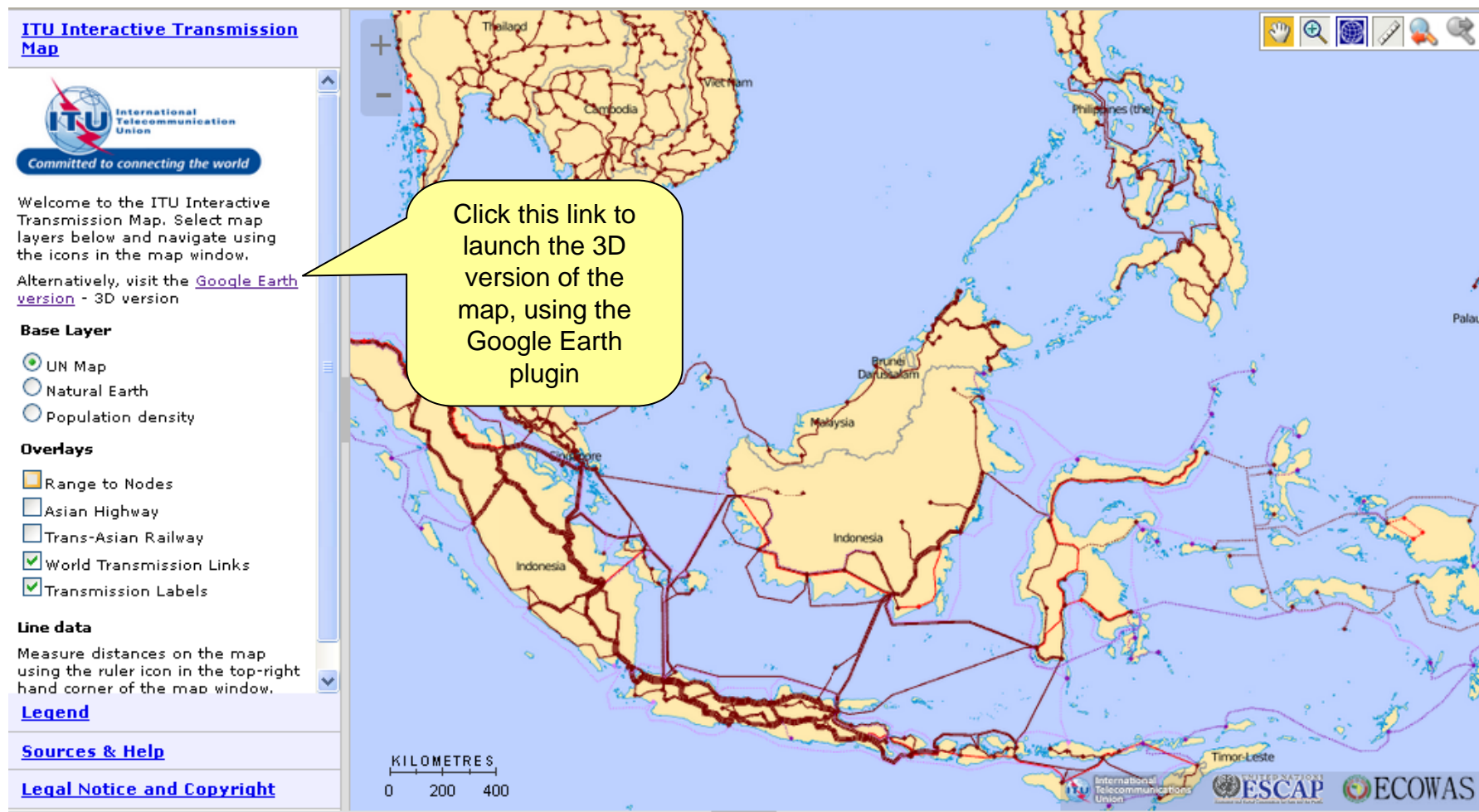


**UNCS Disclaimer:** The designations employed and the presentation of material on this map do not imply the expression of any opinion whatsoever on the part of the Secretariat of the United Nations concerning the legal status of any country, territory, city or area or of its authorities, or concerning the delimitation of its frontiers or boundaries. Dotted line represents approximately the Line of Control in Jammu and Kashmir agreed upon by India and Pakistan. The final status of Jammu and Kashmir has not yet been agreed upon by the parties. Final boundary between the Republic of Sudan and the Republic of South Sudan has not yet been determined. Final status of the Abyei area is not yet determined. A dispute exists between the Governments of Argentina and the United Kingdom of Great Britain and Northern Ireland concerning sovereignty over the Falkland Islands (Malvinas).

**Sources:** UN Map base layer The base map for this infographic is based on the UNmap database, of the United Nations Cartographic Section. The UNmap0 is prepared at a scale of 1:1,000,000. UNmap is being updated on a continuous basis. Transmission Map data The data for building the infographics have been collected through: primary sources: Reply to an official request for information (RFI) document has been sent to all Regions outlining the purpose of the project for operators, indicating what level of detail is required, and what format the data is to be published. Secondary sources: On average, around 25 to 40% of the data was readily available in the public domain, from operator websites, annual reports, company presentations, and presentations at industry conferences. Partnership: A number of organizations do already research and produce transmission network maps for particular countries or regions, for various technical reasons. Wherever possible, partnerships with these organizations were established, to seek permission to display their network maps work through the ITU world transmission map. The collection of data as well as their validation from Concerned Operators/Administrations is currently a work in progress. The source for the Asian Highway and Trans-Asian Railway networks is the ESCAP Secretariat.







**UNCS Disclaimer:** The designations employed and the presentation of material on this map do not imply the expression of any opinion whatsoever on the part of the Secretariat of the United Nations concerning the legal status of any country, territory, city or area or of its authorities, or concerning the delimitation of its frontiers or boundaries. Dotted line represents approximately the Line of Control in Jammu and Kashmir agreed upon by India and Pakistan. The final status of Jammu and Kashmir has not yet been agreed upon by the parties. Final boundary between the Republic of Sudan and the Republic of South Sudan has not yet been determined. Final status of the Abyei area is not yet determined. A dispute exists between the Governments of Argentina and the United Kingdom of Great Britain and Northern Ireland concerning sovereignty over the Falkland Islands (Malvinas).

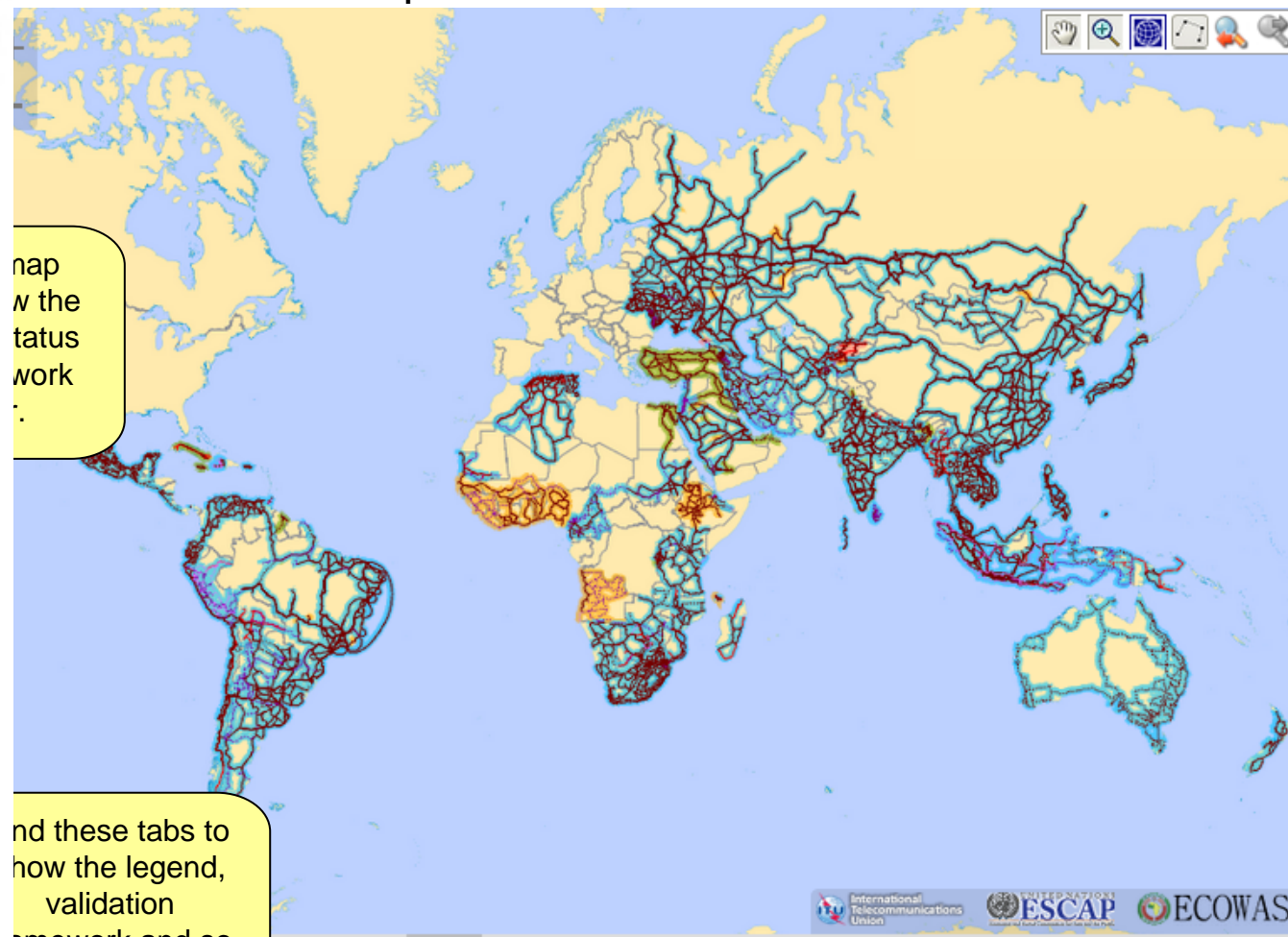
**Sources:** UN Map base layer The base map for this infographic is based on the UNmap database, of the United Nations Cartographic Section. The UNmap0 is prepared at a scale of 1:1,000,000. UNmap is being updated on a continuous basis. Transmission Map data The data for building the infographics have been collected through: primary sources: Reply to an official request for information (RFI) document has been sent to all Regions outlining the purpose of the project for operators, indicating what level of detail is required, and what format the data is to be published. Secondary sources: On average, around 25 to 40% of the data was readily available in the public domain, from operator websites, annual reports, company presentations, and presentations at industry conferences. Partnership: A number of organizations do already research and produce transmission network maps for particular countries or regions, for various technical reasons. Wherever possible, partnerships with these organizations were established, to seek permission to display their network maps work through the ITU world transmission map. The collection of data as well as their validation from Concerned Operators/Administrations is currently a work in progress. The source for the Asian Highway and Trans-Asian Railway networks is the ESCAP Secretariat.



**UNCS Disclaimer:** The designations employed and the presentation of material on this map do not imply the expression of any opinion whatsoever on the part of the Secretariat of the United Nations concerning the legal status of any country, territory, city or area or of its authorities, or concerning the delimitation of its frontiers or boundaries. Dotted line represents approximately the Line of Control in Jammu and Kashmir agreed upon by India and Pakistan. The final status of Jammu and Kashmir has not yet been agreed upon by the parties. Final boundary between the Republic of Sudan and the Republic of South Sudan has not yet been determined. Final status of the Abyei area is not yet determined. A dispute exists between the Governments of Argentina and the United Kingdom of Great Britain and Northern Ireland concerning sovereignty over the Falkland Islands (Malvinas).

**Sources:** UN Map base layer The base map for this infographic is based on the UNmap database, of the United Nations Cartographic Section. The UNmap0 is prepared at a scale of 1:1,000,000. UNmap is being updated on a continuous basis. Transmission Map data The data for building the infographics have been collected through: primary sources: Reply to an official request for information (RFI) document has been sent to all Regions outlining the purpose of the project for operators, indicating what level of detail is required, and what format the data is to be published. Secondary sources: On average, around 25 to 40% of the data was readily available in the public domain, from operator websites, annual reports, company presentations, and presentations at industry conferences. Partnership: A number of organizations do already research and produce transmission network maps for particular countries or regions, for various technical reasons. Wherever possible, partnerships with these organizations were established, to seek permission to display their network maps work through the ITU world transmission map. The collection of data as well as their validation from Concerned Operators/Administrations is currently a work in progress. The source for the Asian Highway and Trans-Asian Railway networks is the ESCAP Secretariat.

## World Protected Map and Validation Framework



map  
w the  
status  
work

and these tabs to  
show the legend,  
validation  
framework and so  
on

This map does not imply the expression of any opinion whatsoever on the part of the Secretariat of the United Nations, or concerning the delimitation of its frontiers or boundaries. Dotted line represents approximately the Line of Control in Jammu and Kashmir. Final status of the Abyei area is not yet determined. A dispute exists between the Governments of Argentina and the United Kingdom of Great Britain over the Falkland Islands (Malvinas).

This infographic is based on the UNmap database, of the United Nations Cartographic Section. The UNmap0 is prepared at a scale of 1:1,000,000. Transmission Map data The data for building the infographics have been collected through: primary sources: Reply to an official request for information lining the purpose of the project for operators, indicating what level of detail is required, and what format the data is to be published. Secondary data was readily available in the public domain, from operator websites, annual reports, company presentations, and presentations at industry conferences. Wherever possible, the data is validated, to seek permission to display their network maps work through the ITU world transmission map. The collection of data as well as their validation is currently a work in progress. The source for the Asian Highway and Trans-Asian Railway networks is the ESCAP Secretariat.

<http://www.itu.int/itu-d/tnd-map-public/>

预览已结束，完整报告链接和二维码如下：

[https://www.yunbaogao.cn/report/index/report?reportId=5\\_6023](https://www.yunbaogao.cn/report/index/report?reportId=5_6023)

