



Philippines

ISCC Ranking: 59

Reducing the cost of international trade transactions has become a priority for Governments intent on facilitating the effective integration of firms in regional and global production networks. Along with improving availability and access to trade related infrastructure, cutting red tape and enhancing trade processes have become essential both to maintain competitiveness and enable smaller players to also benefit.

The latest data on international trade costs from the ESCAP-World Bank database suggest that Philippines has made limited progress on reducing trade costs with its South-East Asian neighbors, and seems to have reduced costs more with East and North-East Asian partners. When tariff costs are excluded, trade costs between Philippines and the United States are only slightly higher than those prevailing among the major ASEAN economies, suggesting further room for intra-regional trade facilitation. Trade costs in the agricultural sector remain high.

Philippines ranks 59th of 179 countries according to the ESCAP International Supply Chain Connectivity (ISCC) Index, a new index released on the occasion of the Asia-Pacific Trade & Investment Week (November 2013) which captures the extent of a country's facilitation of import and export processes as well as its access to efficient maritime services. Philippines' progress in enhancing supply chain connectivity since 2006 has been significant but its performance remains below the South-East Asian average.

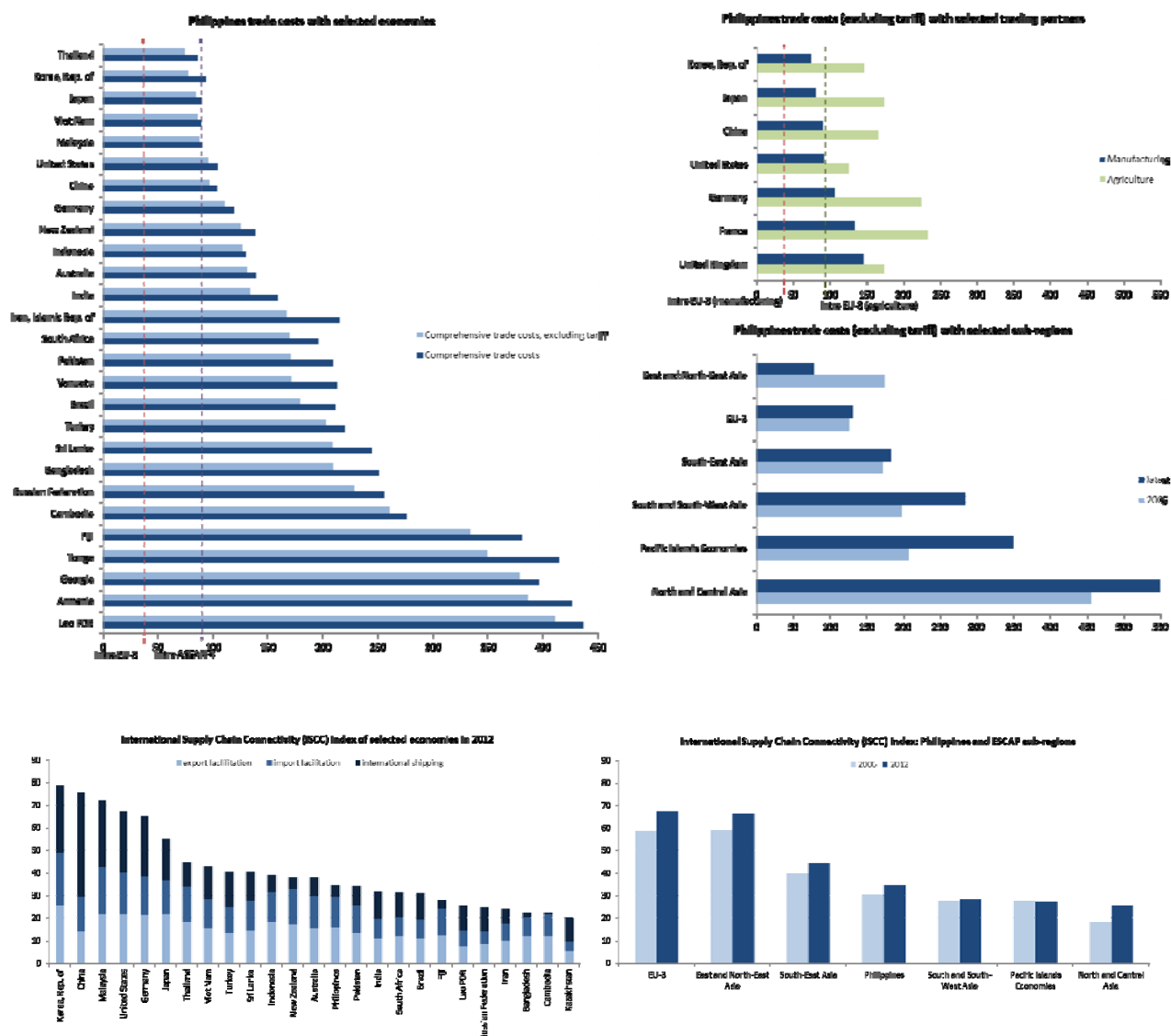


Table 1: Bilateral trade costs (excluding tariff): selected top traders with Philippines in goods sector

Trade costs: overall Partner country	Value: tariff-equivalent			Percentage change
	2006	latest	Average 2006-latest	2006-latest
China	78.10	96.55	88.79	23.62
France	148.17	140.46	142.58	-5.20
Germany	96.31	110.74	106.14	14.98
Japan	70.54	84.15	78.59	19.31
Korea, Rep. of	81.86	77.28	78.68	-5.60
United Kingdom	132.26	150.07	142.55	13.47
United States	78.72	95.19	87.15	20.91
Trade costs ESCAP sub-region	Value: tariff-equivalent			Percentage change
	2006	latest	Average 2006-latest	2006-latest
East and North-East Asia	173.81	77.28	108.35	-55.54
North and Central Asia	454.77	549.18	468.86	20.76
Pacific Islands Economies	206.67	349.27	247.81	69.00
South and South-West Asia	197.40	283.71	236.40	43.72
South-East Asia	171.66	182.43	172.48	6.28
EU-3	125.58	130.40	129.61	3.84

Table 2: Bilateral trade costs (excluding tariff): selected economies/sub-regions with Philippines in agriculture and manufacturing sector

Trade costs: agriculture Partner country	Value: tariff-equivalent			Percentage change
	2006	latest	Average 2006-latest	2006-latest
China	152.39	165.62	169.48	8.68
France	251.24	232.86	244.55	-7.32
Germany	231.59	223.84	227.80	-3.35
Japan	181.26	172.97	176.64	-4.57
Korea, Rep. of	158.65	146.64	153.19	-7.57
United Kingdom	208.77	173.11	206.22	-17.08
United States	131.80	124.90	128.22	-5.24
Trade costs: agriculture ESCAP sub-region	Value: tariff-equivalent			Percentage change
	2006	latest	Average 2006-latest	2006-latest
East and North-East Asia	169.51	156.13	169.42	-7.90
North and Central Asia	311.01	263.10	263.09	-15.40
Pacific Islands Economies	191.12	292.06	303.90	52.81
South and South-West Asia	276.16	266.26	299.57	-3.59
South-East Asia	189.31	176.35	188.67	-6.85
EU-3	230.53	198.48	223.12	-13.90

Trade costs: manufacturing Partner country	Value: tariff-equivalent			Percentage change
	2006	latest	Average 2006-latest	2006-latest
China	70.90	89.72	81.75	26.55
France	140.02	133.75	135.21	-4.48
Germany	90.19	105.42	100.29	16.90
Japan	65.65	79.93	74.04	21.74
Korea, Rep. of	77.18	73.98	74.77	-4.14
United Kingdom	126.21	145.63	137.23	15.39
United States	73.85	91.57	82.92	24.00
Trade costs: manufacturing ESCAP sub-region	Value: tariff-equivalent			Percentage change
	2006	latest	Average 2006-latest	2006-latest
East and North-East Asia	150.37	73.98	100.84	-50.80
North and Central Asia	418.30	408.05	419.14	-2.45
Pacific Islands Economies	212.74	312.15	258.31	46.72
South and South-West Asia	185.95	258.33	215.22	38.92
South-East Asia	148.73	146.01	144.56	-1.83
EU-3	118.81	125.53	123.60	5.66

Table 3: International supply chain connectivity (ISCC) index and sub-indicators: top traders

Country	2006				2012				ISCC (average 2006-2012)	ISCC (percentage change 2006-2012)
	Export facilitation	Import facilitation	International shipping	ISCC	Export facilitation	Import facilitation	International shipping	ISCC		
Philippines	13.77	11.73	4.86	30.36	15.87	13.52	5.05	34.45	32.48	13.46
Japan	21.71	14.97	19.02	55.70	21.59	14.91	18.59	55.10	55.91	-1.09
United Kingdom	19.12	17.11	24.03	60.25	20.83	19.64	24.76	65.23	62.37	8.26
Germany	22.13	18.35	23.77	64.25	21.24	17.37	26.71	65.32	65.24	1.67
United States of America	22.11	19.07	25.29	66.46	21.57	18.66	27.03	67.25	65.55	1.18
France	17.60	13.92	19.98	51.50	26.86	23.97	20.66	71.49	65.64	38.83
China	17.92	16.89	33.33	68.15	14.28	15.15	46.03	75.46	72.62	10.73
Korea, Rep. of	16.85	11.79	21.20	49.84	25.56	23.33	29.98	78.87	66.30	58.25

Table 4: International supply chain connectivity (ISCC): sub-regional average

Sub-region	2006	2012	Average 2006-2012	Percentage change 2006-2012
East and North-East Asia	58.91	66.03	62.93	12.09
North and Central Asia	18.13	25.37	20.95	39.94
Pacific Islands Economies	27.36	27.20	27.28	-0.61
South and South-West Asia	27.38	28.03	28.16	2.37
South-East Asia	39.65	44.66	42.24	12.64
EU-3	58.67	67.35	64.41	14.80

This note is based on ESCAP's trade costs and International Supply Chain Connectivity Databases. For full database access, please visit <http://www.unescap.org/tid/artnet/database.asp>

Definitions:

Comprehensive trade costs: all costs involved in trading goods internationally with another partner relative to those involved in trading goods domestically;
Comprehensive trade costs (excluding tariff): all additional costs other than tariff costs involved in trading goods bilaterally rather than domestically;
International Supply Chain Connectivity (ISCC): an index that measures overall trade facilitation performance of a country along the international supply chain, which is based on the trading across border (TAB) indicators from the World Bank Doing Business Report and the Liner Shipping Connectivity Index (LSCI) of UNCTAD. ISCC Ranks from 1 to 179. **Intra EU-3:** average trade costs among 3 largest EU economies, namely, France, Germany and United Kingdom.
Intra ASEAN-4: average trade costs among Indonesia, Malaysia, Philippines and Thailand.

预览已结束，完整报告链接和二维码如下：

https://www.yunbaogao.cn/report/index/report?reportId=5_6367

