

What we have Learned



Geo Portal

- The portal is a hardware and software infrastructure that provides access to large scale geospatial data sets, as well as sophisticated search, discovery and analysis tools to make the data readily available to Ontario researchers. Resources include data licensed by Ontario academic libraries, such as land-based vector data (water, cultural features, etc.), census geography, and orthophotography.

How to access Geo Portal

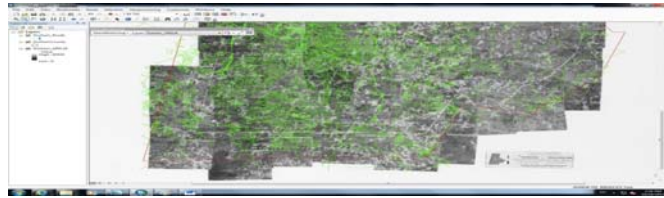
- Type <http://203.259.29.6> and then we will access to our GeoPortal page
- Register a new account

Adding layers and Maps

The screenshot shows a web interface for uploading layers. At the top, there are two tabs: 'EXPLORE LAYERS' and 'UPLOAD LAYERS'. Below the tabs, the text 'UPLOAD LAYERS' is displayed. A large dashed box contains the text 'Drop files here'. Below this, there is a section for selecting files one by one, with a 'Browse...' button and the text 'No files selected.'. At the bottom, there is a dark grey bar with the text 'FILES TO BE UPLOADED'.

1.Shp 2. shx 3.dbf 4. prj 5. sld

Geo Referencing Data



Using georeferencing methods, data obtained from surveying tools like [total stations](#) may be given a point of reference from topographic maps already available.

Ubuntu Installation

- Installation of Ubuntu needs few steps like, Creating boot partitions, selecting the space which is needed for Hbuntu and follow the installation process

Operating system:

CentOs/RHEL and nix distros

For : windows, osx and others as well

Security features in Geo portal

- Who have permission to view or access data

We have the option as a super user to priermit or don't permit the users the following acceses:

Map Printing, Publishing thematic maps

- Publish map on websites (copy the URL of map and past it in any website)
- Printing map (A4, Resolution 150 dpi, 300 dpi)

预览已结束，完整报告链接和二维码如下：

https://www.yunbaogao.cn/report/index/report?reportId=5_6474

