

Broadband in Indonesia



Ms. Farida Dwi Cahyarini

Deputy Director General of Resources and Equipment for Post and Information
Technology Affairs
Ministry of Communication and Information Technology
Republic of Indonesia



Overview of Indonesia



Total : 1,904,569 sq km
Water : 93,000 sq km
Land : 1,811,569 sq km
15th Largest in the world

AREA

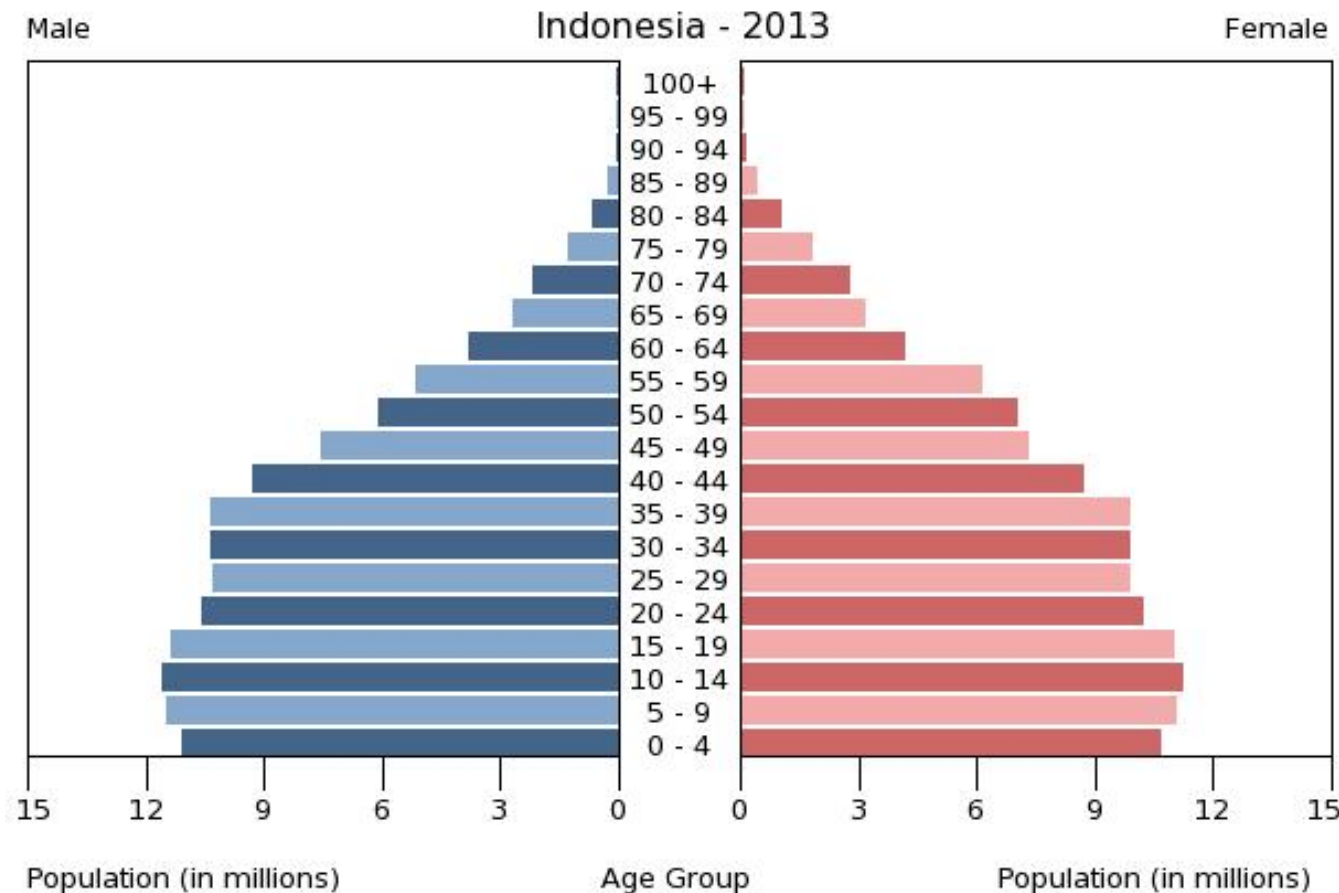
17,508 islands
(6,000 inhabited)
33 Provinces

ARCHIPELAGO

251,160,124
(July 2013 est.)
4th Largest in the World

POPULATION

Population Pyramid of Indonesia



Of the 251 million people, over 50% of the population is under 29 years old, and 60% of the population is under the age of 39, with around 52% of the population living in urban areas.

Source : The World Factbook (www.CIA.gov)



3rd Largest Users in the World

Source : emarketer.com (2012)



5th Largest Users in the World
2 Cities in Indonesia (Jakarta & Bandung)
placed in 1st and 6th most active twitter cities

Source : SemioCast.com (July 2012)

Indonesia ICT Profile



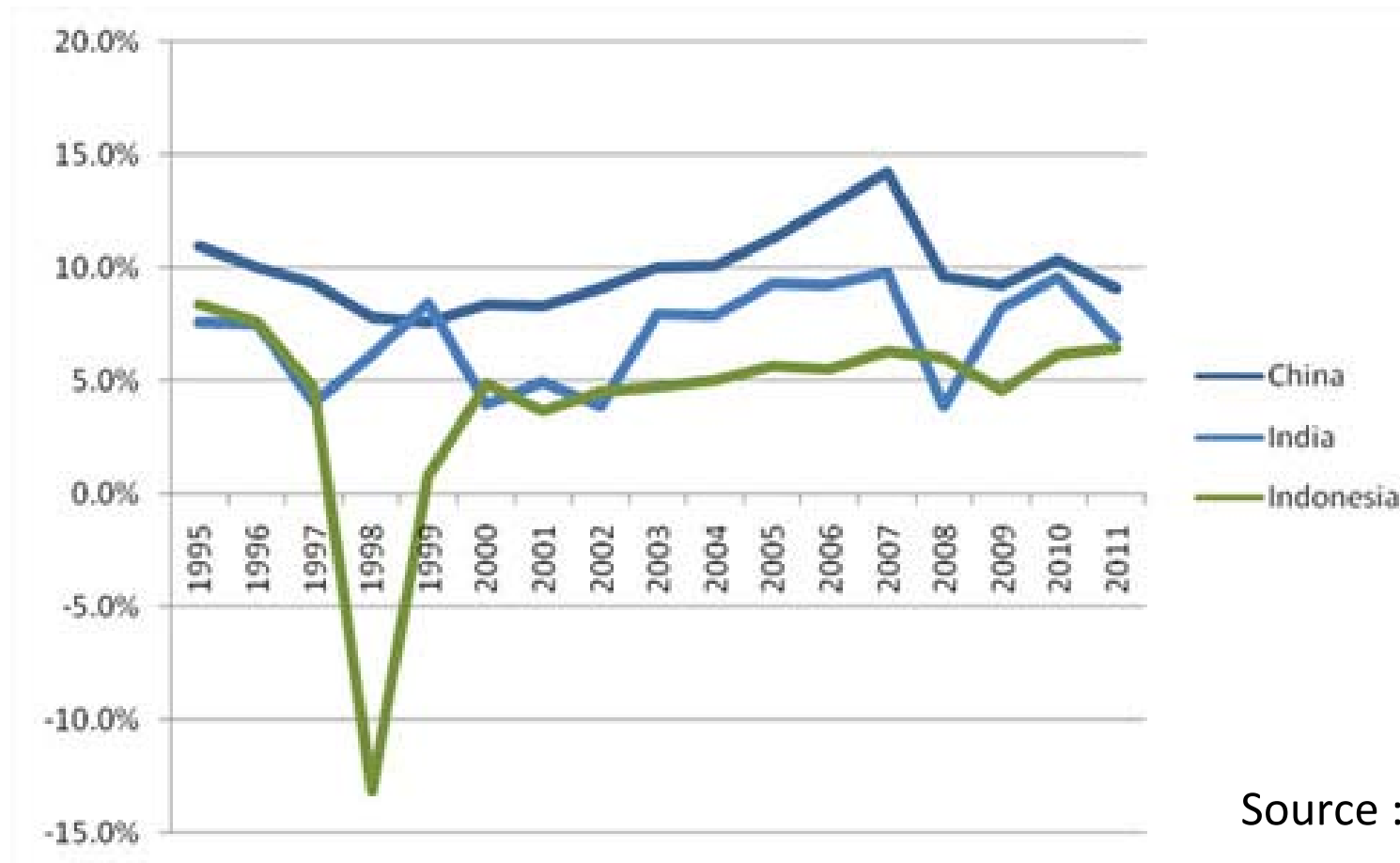
Total Population	251 Million
Fixed line subscribers consisting: PSTN 8.3 mill, FWA 31,7 mill.	40 million sub (16.6%)
Mobile:	262.6 millions subs (109%)
Internet users:	115.7 millions (48%)
Broadband (ADSL, FTTH, 3G, & HSDPA):	12 millions (5%)
TV Coverage	180 – 190 Million

Few facts



- Mobile and internet growth very fast
- 11 operators fight heavily in Urban, only a few build in Rural.
- In Urban almost everybody has 3-4 mobile simcards – used heavily on facebook, twitter, and blackberrys - the 3th facebook the 1 st twiter and the first growth in blackberrys users in the world.
- In 2006 still 33,000 out of 70, 000 villages with no telephone → Big gap between Urban and Rural
- The first project of USO was installing public phone in every villages

Economy of Indonesia (Real Growth of GDP)



With the GDP expected to reach US\$ 1trillion this year, Indonesia is the largest economy in Southeast Asia. Much less affected by the global financial crisis compared to its neighboring countries, Indonesia's economy grew by 6.3% in the first semester of 2012, making it the fastest growing G20 economy after China. Indonesia grew by 6.5% in 2011 and 6.3% in 2012.

s of Broadband Development in : **NEED TO BE ACCELERATED**



ed Backbone are not fully connecting all cities, currently there are only 69,6% of Indonesia connected to the optical-fiber backbone, not even exist in Maluku and

M (2012)

broadband services is still high : around \$100/capita. As a comparison, in developed countries the price of broadband services is around \$10/capita.

(2012) and Intel Corp (2011)

https://www.yunbaogao.cn/report/index/report?reportId=5_6686

预览已结束，完整报告链接和二维码如下：

