



 **National Emergency Management Office (NEMO)**  
'Ofisi Fakafonua Ki Hono Tokanga-e-kina 'o e Ngaahi Fakatamaki 



Name: [Mafua-'i-Vai'utukakau Maka](#)

 **National Emergency Management Office (NEMO)**  
'Ofisi Fakafonua Ki Hono Tokanga-e-kina 'o e Ngaahi Fakatamaki 

**Status and Challenges  
on  
Geo-DRM Information Systems  
in  
Tonga**



**National Emergency Management Office (NEMO)**  
 'Ofisi Fakafonua Kí Hono Tokanga-e-kina 'o e Ngaahi Fakatamaki



## Roles and Relationships

### Land and Geographic Information Systems (LGIS) Unit:

- *Establish updated high-resolution Land and Geographic Information Systems to support land, risk and hazard management – **National Emergency Management Office***
- *Provide GIS information for the **Environment and Climate Change Division** to support biodiversity conservations and the increasing resilience to climate change*
- *Others*

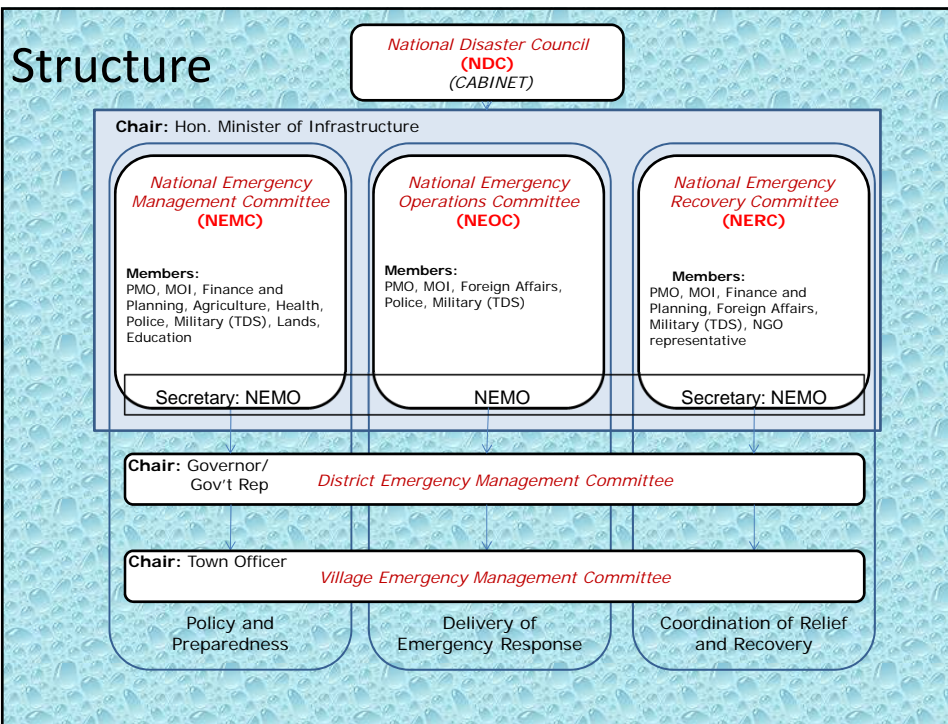


**National Emergency Management Office (NEMO)**  
 'Ofisi Fakafonua Kí Hono Tokanga-e-kina 'o e Ngaahi Fakatamaki



## GEO-DRM STATUS

- **WHO IS RESPONSIBLE FOR GEO-DRM?**
  - Ministry of Lands, Environment, Climate Change & Natural Resources (MLECCNR) is responsible for provision of Geospatial Information for Disaster Risk Reduction (DRM)
    - The GIS Section, MLECCNR provides geospatial information;
    - The Geological Services Unit, MLECCNR provides seismic information and tsunami threat assessments.





National Emergency Management Office (NEMO)  
'Ofisi Fakafonua Kí Hono Tokanga-e-kina 'o e Ngaahi Fakatamaki



## GEO-DRM STATUS...Cont.

- WHAT SORT OF GEO-SPATIAL INFORMATION?
  - Geospatial information includes natural hazard thematic maps such as:
    - Maps of Coastal Inundation caused by tsunami, storm surges, sea level rise, etc.;
    - Maps of Earthquake Epicenters;
    - Maps of Tsunami Sources and Arrival Time;
    - Maps of Tropical Cyclone Tracks;
    - Maps of Active and dormant Volcanoes in the region;



National Emergency Management Office (NEMO)  
'Ofisi Fakafonua Kí Hono Tokanga-e-kina 'o e Ngaahi Fakatamaki

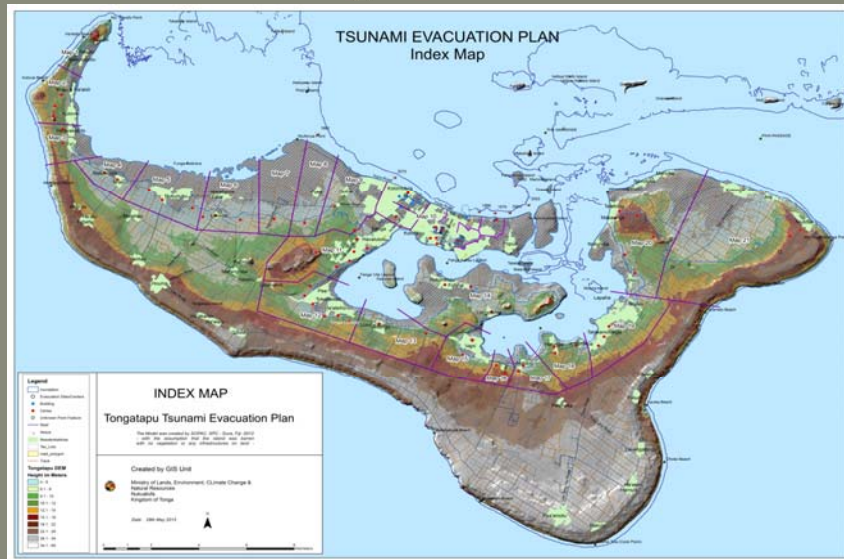


## GEO-DRM STATUS...Cont.

### Geospatial Information – DRR/DM

- Roads
- Contours
- Digital Elevation
- Satellite Imagery
- GPS Data
- Buildings

# GIS & Spatial Information

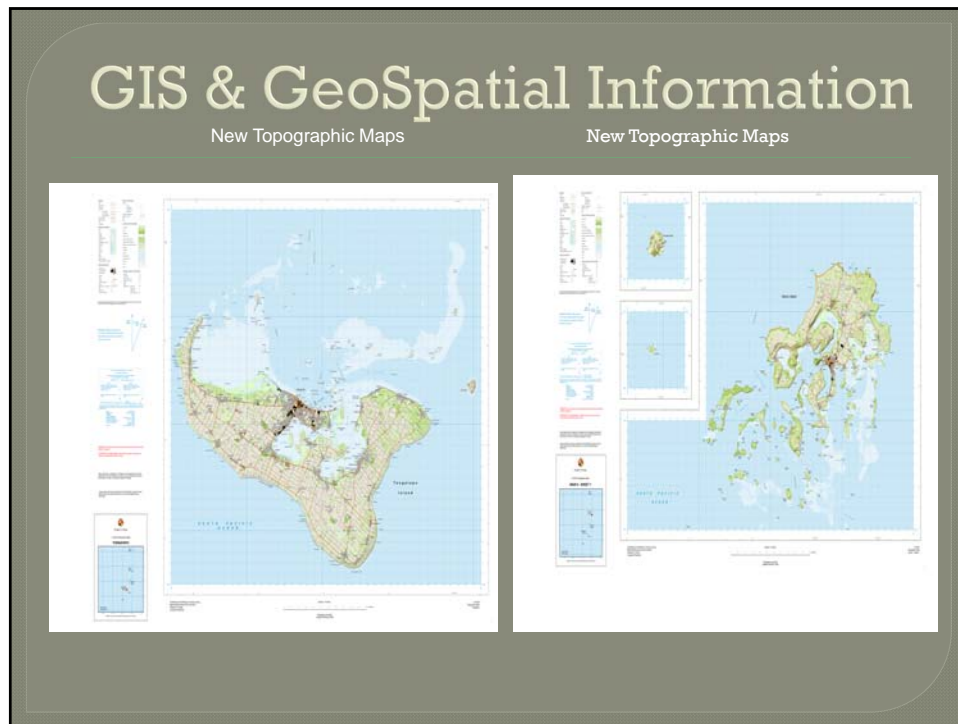


# GIS & Spatial Information

Evacuation Plan







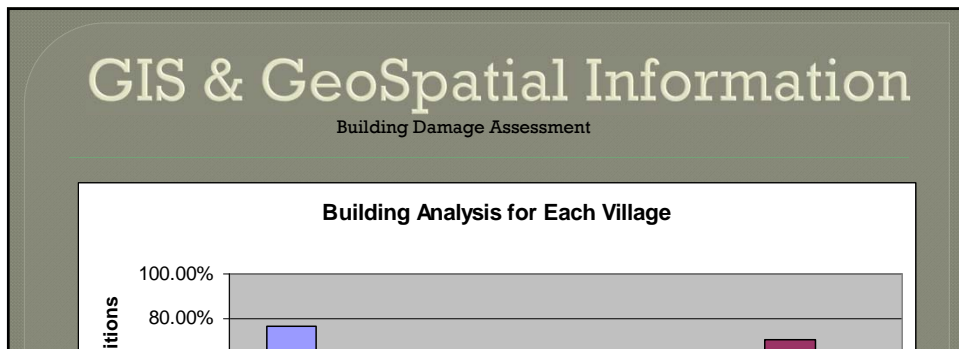
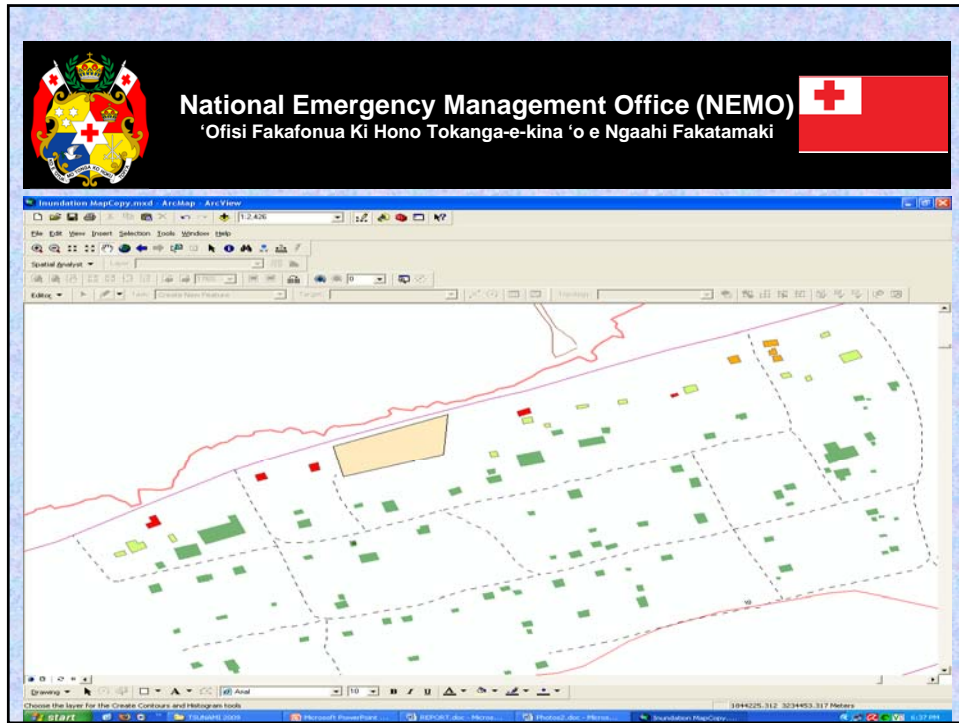
**National Emergency Management Office (NEMO)**  
'Ofisi Fakafonua Kí Hono Tokanga-e-kina 'o e Ngaahi Fakatamaki

## GEO-DRM STATUS...Cont.

### Geospatial Information

#### Producing Post Disaster Damage Assessments

- Roads
- Contours
- Digital Elevation
- Satellite Imagery/Post Disaster
- GPS Data
- Buildings



预览已结束，完整报告链接和二维码如下：

[https://www.yunbaogao.cn/report/index/云报告?reportId=5\\_6795](https://www.yunbaogao.cn/report/index/云报告?reportId=5_6795)

