

Status and challenges on Geo-DRM Information Systems

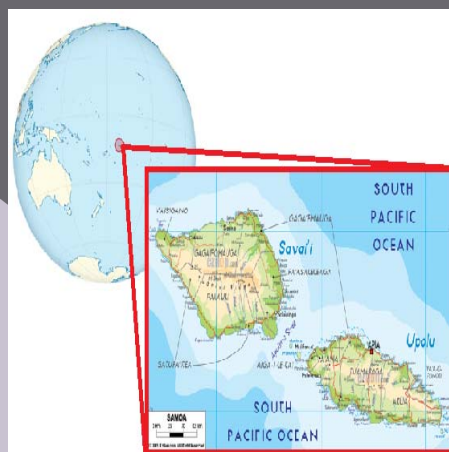
Country Presentation - SAMOA



Josephina Chan Ting
Disaster Risk Reduction Officer
Disaster Management Office
Ministry of Natural Resources and Environment

SAMOA

- Due to its size and location, Samoa is highly vulnerable to natural disasters particularly tropical cyclones as it lies near the 'cyclone belt' near the earthquake-generating Tonga Trench.



Current Status on Geo-DRM Information Systems

Mapping Section (MNRE)

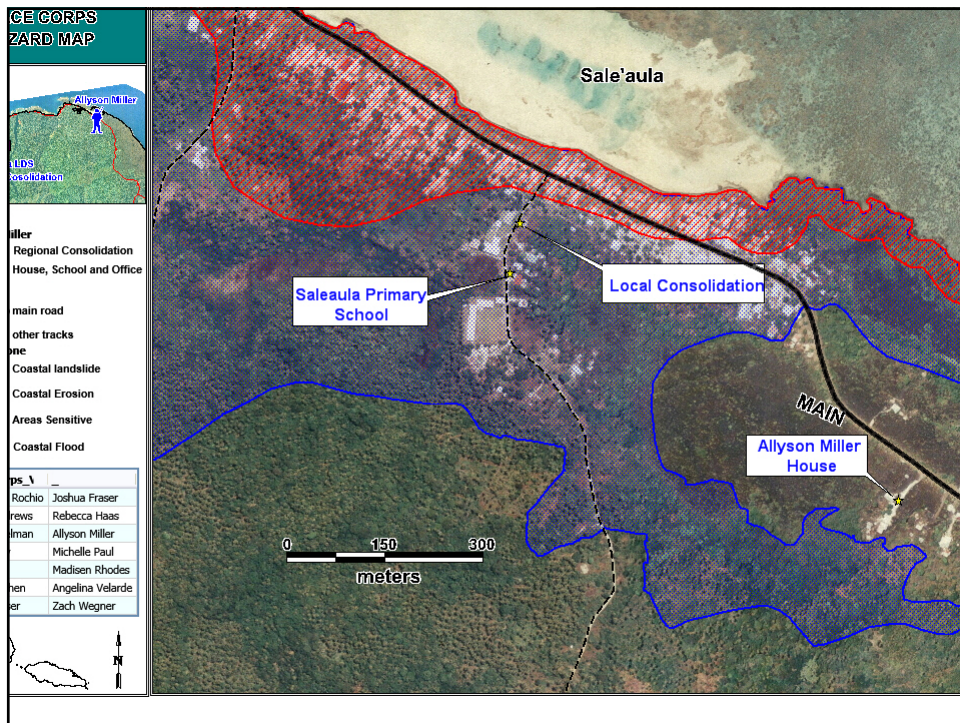
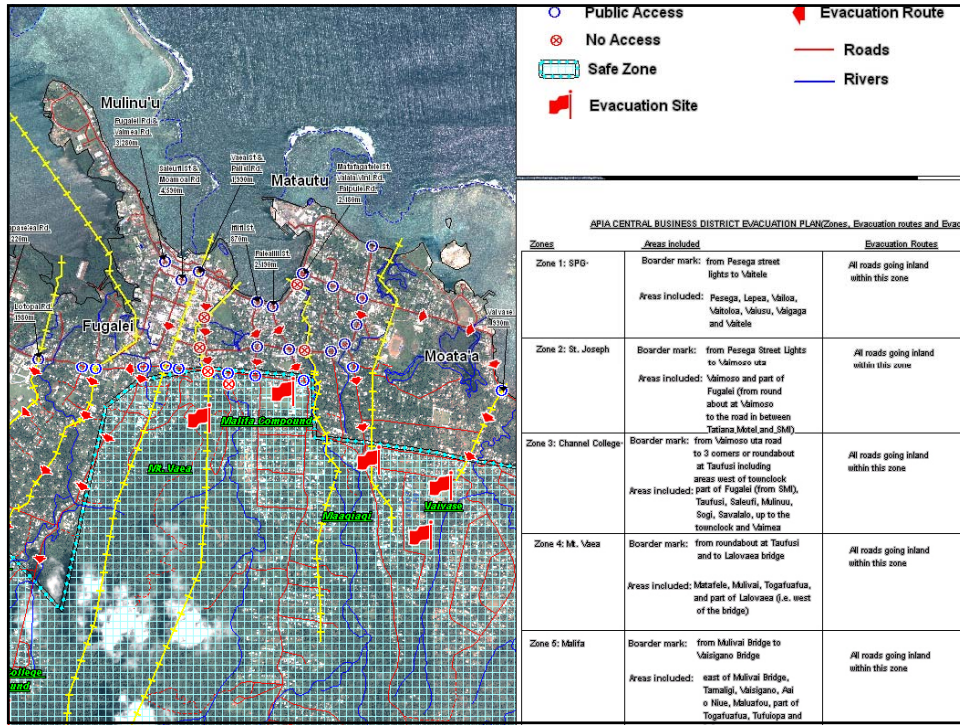
- The mapping section deals with works relating to remote sensing technology which acquire and analyze satellite imageries and geographical information system (GIS) related works which results in generating of maps for different purposes within the ministry and its stakeholders.

Surveying and Mapping Software

- SDRMap: currently uses for Surveying.
- MapInfo: Mostly used for GIS and Map Production.
- Open source software
 - • Quantum GIS
 - • Global Mapper
 - • Base Camp

Management of Remotely Sensed Dataset.

- Aerial Photography
- satellite imageries



Gaps/Challenges

- Data(1999) out of date – update images (satellite/aerial)
- Equipment and software – upgrade software and new computers
- Trainings (analysis) – provide advance training for the staff (capacity building) Need GIS expert within DMO
- Spatial Information barrier – the information must be share to the public especially to all the GIS users
- lack of sharing of info between divisions esp during disasters. - Centralized

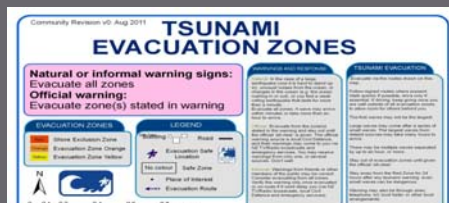
Gaps!

Recent major events in SAMOA

2009 Tsunami

Tuesday, September 29, 2009, generating 15ft (4.5m) tsunami waves in some areas of the Samoa Islands. 149 people died

- o Coastal erosion
- o Coastal flooding



预览已结束，完整报告链接和二维码如下：

https://www.yunbaogao.cn/report/index/云报告?reportId=5_6802

