

SUB-REGIONAL TRAINING WORKSHOP ON GEO-DRM SYSTEMS FOR PACIFIC COUNTRIES AND STUDY TOUR OF COOK ISLANDS

MR.SAMUELA KANAINALIWA
NATIONAL DISASTER MANAGEMENT OFFICE.

FIJI
COUNTRY PRESENTATION

SCOPE

- Overview
- Background of GIS in Fiji
- Status
- Challengers
- Recommendation

COUNTRY BACKGROUND

- Fiji lies at, “174° East and 178° West of Greenwich and makes up a total landmass of 18,300km² with an Exclusive Economic Zone (EEZ) of approximately 1.3x10km².
- Two main islands, Vanua Levu which is 5,556 square kilometers and Viti Levu 10,429 square kilometers.
- Other main islands are Taveuni (470 sq km), Gau (140 sq km) and Koro (104 sq km).
- Capital city of Suva situated on Viti Levu
- Mountainous land in Fiji comprises 12,400 square kilometers; hills comprise 2,700 sq km and flat land, 2,800 square kilometers.
- Population stands at 837,271. Urban population comprises of 424,846 while rural population stands at 412,425.
- Two main weather patterns experienced are the ‘hot and wet’ weather of the windward side of the islands and the ‘cool and dry’ weather on the leeward side of the island attributed to the dominant wind system of Fiji which is the South Easterly trade winds

COUNTRY BACKGROUND

- Fiji is considered one of the most multi-racial countries of the South Pacific with the indigenous Fijians or the ‘i-taukei’ and the Indians as the highest ranking in population. By 2007, the population census recorded that the indigenous Fijians contributed the largest to the population.

Population By Major Race



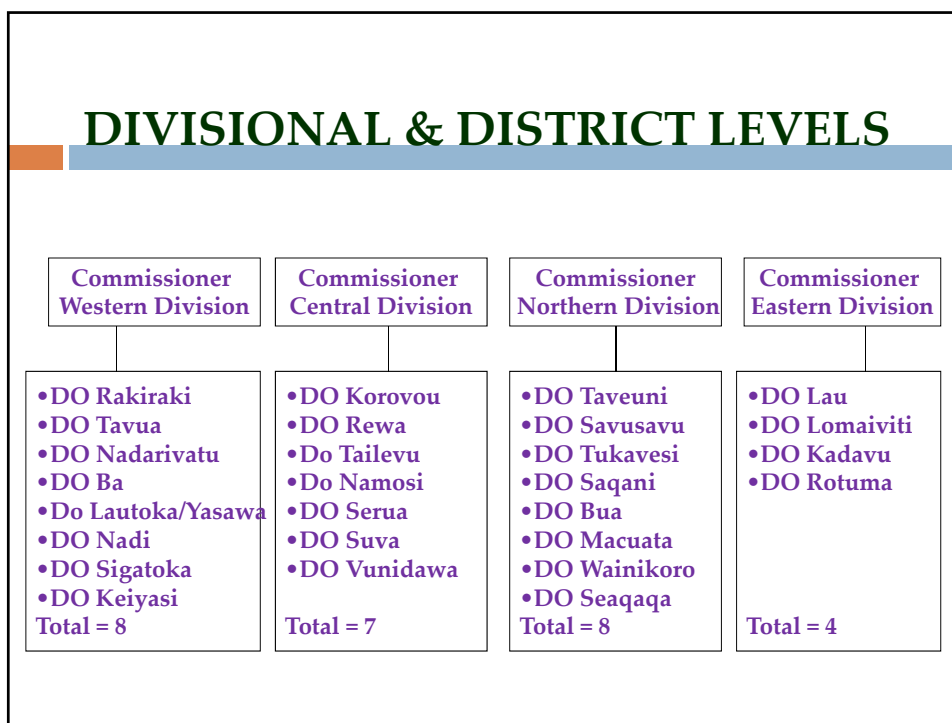
□ Source: Bureau of Statistics



ADMINISTRATION

- National
- 4 Divisions: Central, Western, Eastern & Northern
- 27 Districts
- 1171 Villages
- 13 Municipalities
- Settlements
 - ▣ Legal – on lease and owned land
 - ▣ tenancy at will

DIVISIONAL & DISTRICT LEVELS



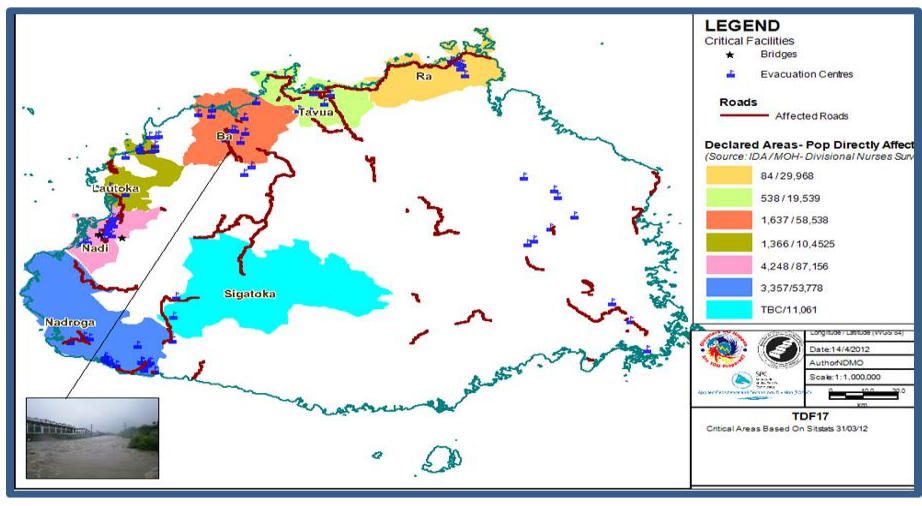
MINISTRY OF RURAL, MARINE TIME AND PROJECTS IN FIJI

- Self Help Scheme
- Non-Cane Access Roads
- Rural Housing Assistance Scheme
- Cane Access Roads Scheme
- Education Building and Boarding Facilities Grant Scheme
- Social Welfare Housing Assistance Scheme

GIS IN FIJI

- In 1990 the Ministry of Lands with the assistance of the New Zealand government (NZAID) established the Land Information System (GIS) strategy in Fiji.
- 5 main objectives for this strategy were as follows:-
 1. To establish an appropriate organisation structure, i.e. a Fiji Land Information Council (FLIC)
 2. To support a programme of LIS training to ensure that in the long-term the management and development of a national LIS can be in the hands of local personnel with a diminishing reliance on overseas expertise.
 3. To develop a set of data standards necessary for the implementation of a national LIS and efficient transfer of digital data between agencies.
 4. To promote the concept of data custodianship.
 5. To establish a directory of Land Information.

GIS Status in Fiji Critical Components Within Declared Areas



GIS Status in Fiji

- JICA senior volunteer
- No specific staff to focus on GIS
- Integration of data (GIS user team look after software used by Government) established data sharing eg. water Authority initiative by SOPAC

ORGANISATION & STRUCTURE

- **Fiji Land Information Council (FLIC)**
To ensure a coordinated approach to the development of a national Land Information Strategy a Land Information Council comprising of senior representatives was established.
- **Members of FLIC include:-**
 1. Permanent Secretary, Ministry of Lands & Mineral Resources (Chairman)
 2. Permanent Secretary, Housing & Urban Development
 3. Permanent Secretary, Finance & Economic Planning
 4. Permanent Secretary, iTaukei Affairs
 5. Permanent Secretary, Provincial Development
 6. General Manager, iTaukei Land Trust Board
 7. Representative of the Public Service Commission
 8. The Solicitor General
 9. The FLIC reports to the Chairman who is seen to be the most compatible to the LIS objective.

To ensure a coordinated approach functions of FLIC include:-

- The development and coordination of all LIS projects
- The definition funding and resourcing all approved LIS projects
- The formulation of policies on data generation and management in the agencies encompassed by the LIS umbrella such as *data standards & the use and dissemination of LIS data-including pricing, privacy, security and access*
- Training and education
- Liaison with private sector and the user community
- Ensuring the LIS projects are properly cost-justified and that projects timetables are adhered to
- The management and direction of the LIS support Centre
- The publication of information to keep all sectors of the community informed on progress and products

Fiji Land Information Support Centre (FLIS)

- In order to carry out the Council's decisions a secondary structure, Fiji Land Information Support Centre (FLIS) was established in 1992 as secretariat to the Council and ensuring that all decisions made

预览已结束，完整报告链接和二维码如下：

https://www.yunbaogao.cn/report/index?reportId=5_6806

