

Session I

Production-Transport Nexus: Domestic shipping services

John Moon

Resource Person ESCAP

johnmoon1948@gmail.com

Session I

Production-Transport Nexus: Domestic shipping services Introduction

- (a) Production-transport nexus
- (b) Public service obligations in support of the economic development of outer islands (subsidies, franchising and licensing)

What are we looking for from inter-island shipping?

- Appropriate capacity (relative to passenger and freight demand)
- Frequent (voyages per unit time – per day, week, month, year as appropriate)
- Efficient (trip miles per time period - NB a service could be frequent and reliable but not efficient)
- Reliable
 - regular – small variations in times between successive arrivals of ships
 - punctual – little variation from scheduled arrival and departure times
- Affordable (which may depend on the income-generation potential)
- Safe
- Environmentally sound and compliant
- Short transit times (reflecting more direct rather than circuitous route structures)

Characteristics of Small Island Developing States

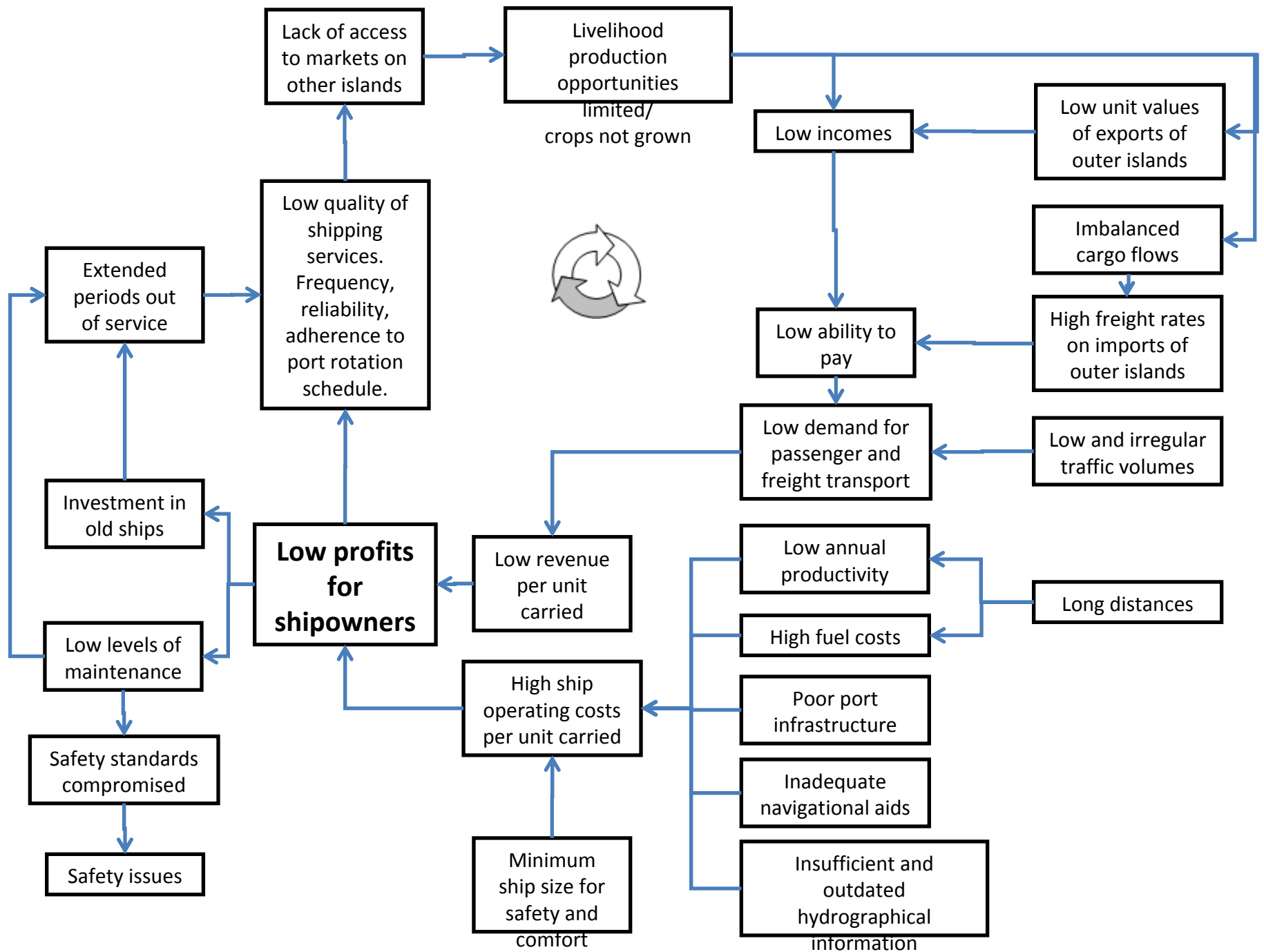
- Small size
- Remote and dispersed
- Vulnerable to external (demand and supply-side) shocks
- Narrow resource base
- Exposure to global environmental challenges

Demand side characteristics (affecting revenues)

- low and often irregular traffic volumes
- imbalanced cargo flows, and
- low unit values of exports

Supply side characteristics (affecting costs)

- long voyage distances
- minimum ship sizes for safety and comfort
- indivisibilities in associated seaport infrastructure, superstructure and equipment
- physical constraints to ship size at ports
- Inadequate navigational aids and insufficient and outdated hydrographical information



https://www.yunbaogao.cn/report/index/report?reportId=5_6908

预览已结束，完整报告链接和二维码如下：



ne freight or passengers are ere, neither are the ships

hipping problems in
d addressing the
e to bring back copra
iava.

t Shipping Fleet
tain Jone
en he was young his
to put him through an
n, through lucrative

's would fill up the
the way to the sheds
pra and fill the ships
with supplies they

ava closed '... the
to travel in frequently
island locations
ng and finally they



Copra loading