

How to Plan Implementation of a National Single Window?

- Using State of the Art Management Concepts for SW Planning and Implementation -



Dr. Somnuk Keretho
UNNExT Advisory Committee
Director, Institute for IT Innovation
Kasetsart University, Bangkok



**UNNExT Capacity Building Workshop for
Cambodia Single Window Implementation**
28-29 March 2013, UNCC – Bangkok



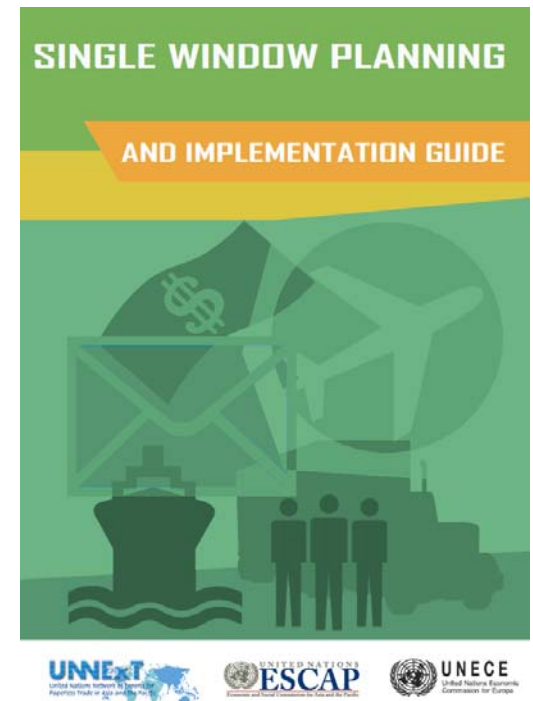
Organized by UNESCAP and World Bank

With the Support of Thai Customs Department, Ministry of Finance and UNNExT

The objective of this presentation

- ❑ To introduce and recommend a systematic approach, so called Single Window Implementation Framework (SWIF), for guiding policy managers, decision makers and relevant stakeholders in planning, managing, and overseeing the NSW development projects.

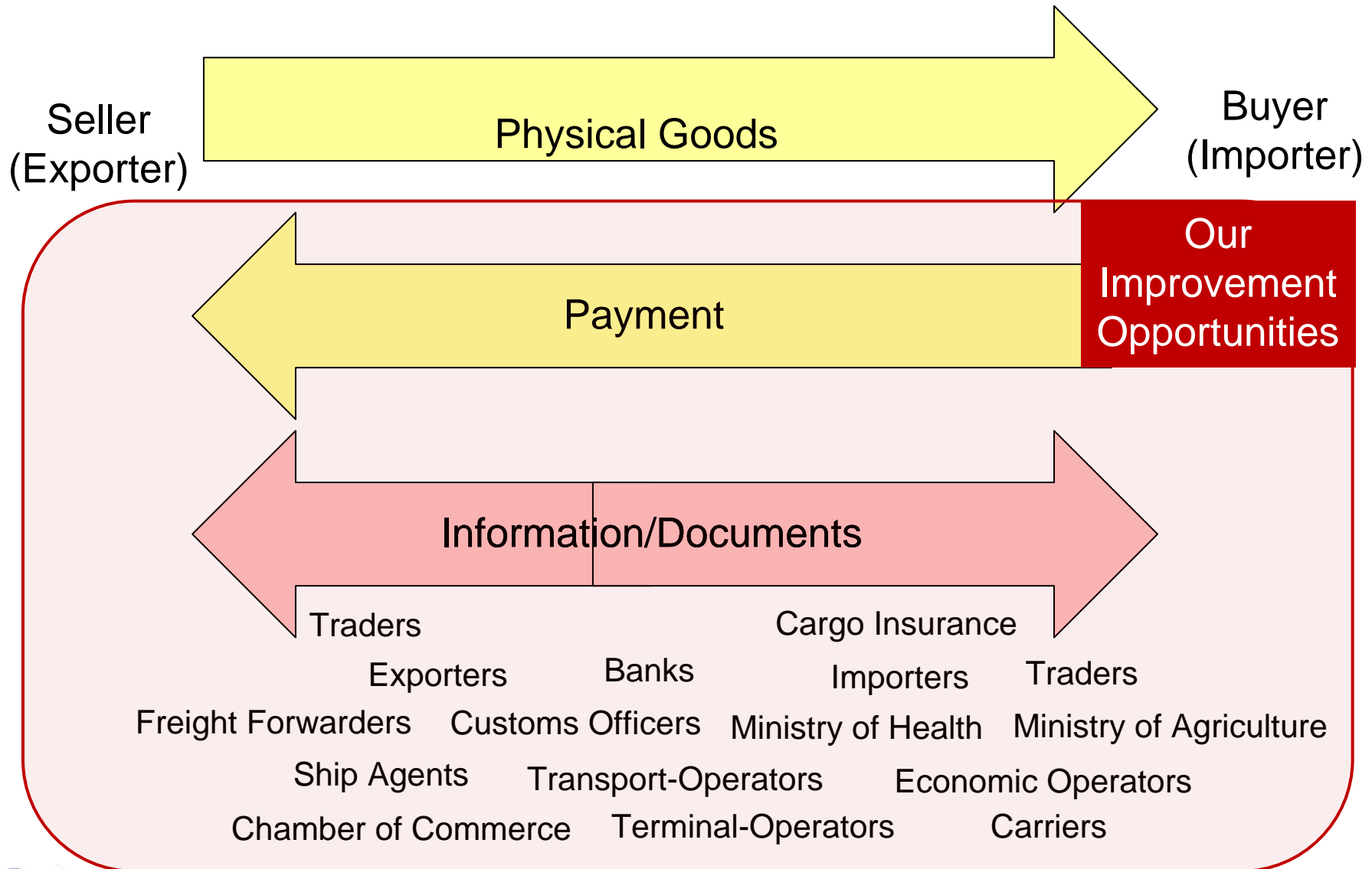
Referring to
“UNNEXT SW Planning and Implementation Guide”
www.unescap.org/unnext



Topics of the presentation

- Our Context: Trade Facilitation & NSW Vision
- Why a systematic methodology is needed to help planning and implementing a NSW Vision?
- An architecture-based SW framework is introduced to guide the planning and development of NSW
 - How to formulate a SW Vision/Goals
 - SW long-term Roadmap
 - Step-by-step Project Management
(1. Inception, 2. Elaboration/Detailed Analysis, 3. Planning,)
- Conclusion

Trade Logistics – 3 Kinds of Flow



The issue is about Increasing National Trade Competitiveness

by improving
Import/Export/Transit/Trade Procedures and
Documents Handlings
among **Government Agencies,**
Business Entities and
Logistics Service Providers
(this is called **“Trade Facilitation”** improvement)

Documents related to Exportation of Rice

(from purchase order until the cargo container leaving the sea port)

36 Documents involving 15 parties, and more than 1,140 data elements to be filled in

1. Proforma Invoice (35)
2. Purchase Order (39)

Buy/Pay Docs

3. Commercial Invoice (51)
4. Application for Letter of Credit (24)
5. Letter of Credit (32)

6. Packing List (25)

7. Cargo Insurance Application Form (20)

8. Cover Note (23)

9. Insurance Policy (24)

10. Booking Request Form – Border Crossing (25)

11. Booking Confirmation – Border Crossing (30)

12. Booking Request Form – Inland Transport (16)

13. Booking Confirmation – Inland Transport (18)

14. Bill of Lading (42)

15. Empty Container Movement Request (TKT 305) (20)

16. Request for Port Entry (TKT 308.2) (27)

17. Equipment Interchange Report (EIR) (24)

18. Container Loading List (28)

19. Container List Message (32)

20. Outward Container List (34)

Transport Docs

21. Master Sea Cargo Manifest(17)

22. House Sea Cargo Manifest (37)

23. Export Declaration (114)

24. Good Transition Control List (27)

25. Application for Permission to Export Rice (KP. 2) (24)

26. Sales Report (KP 3) (21)

27. Application for the Collection of the Permit for the Export of Rice (A. 3) (35)

28. Permit for the Export of Rice (A. 4) (35)

29. Application for Certificate of Standards of Product (MS. 13/1) (44)

30. Certificate of Analysis (17)

31. Certificate of Product Standards (MS. 24/1) (45)

32. Certificate of Fumigation (21)

33. Application for Phytosanitary Certificate (PQ. 9) (29)

34. Phytosanitary Certificate (33)

35. Application for Certificate of Origin (42)

36. Certificate of Origin (38)

Regulatory Docs

* Number in parenthesis is the no. of data elements

A Business Process Analysis

– in Exporting Jasmine Rice from Thailand –

BUSINESS PROCESS ANALYSIS

GUIDE

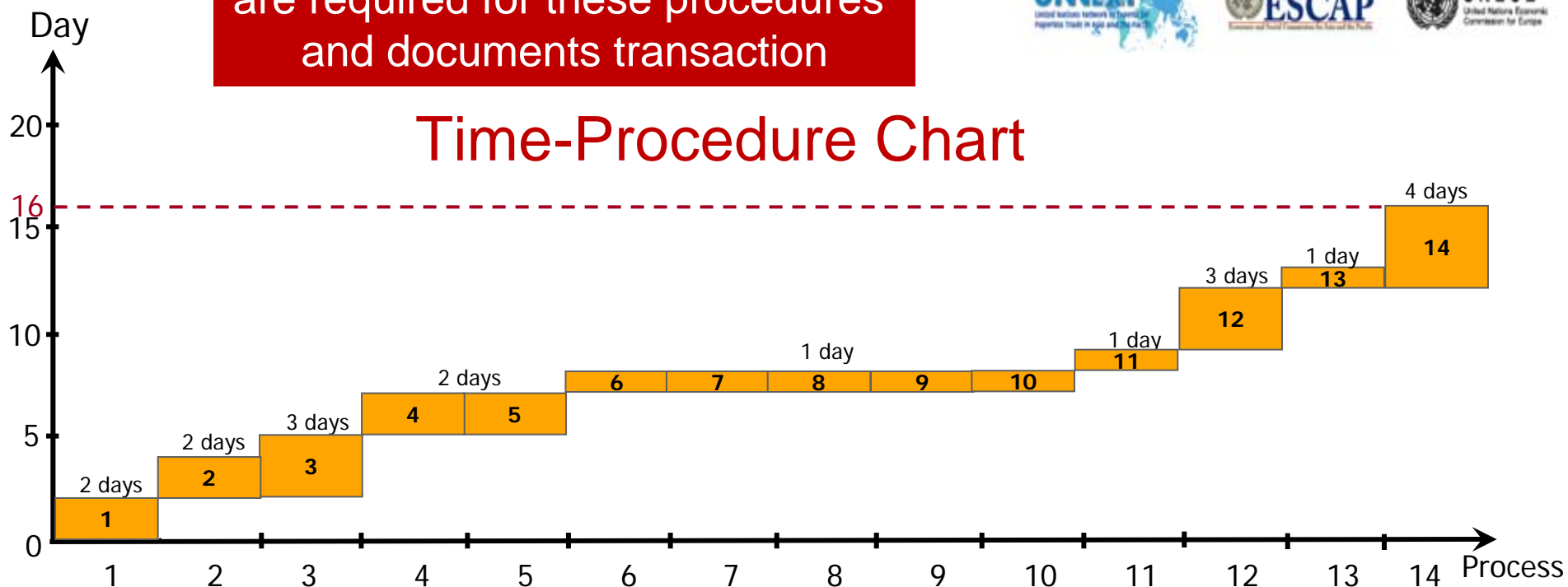
TO SIMPLIFY TRADE PROCEDURES

16 days

are required for these procedures
and documents transaction



Time-Procedure Chart



1. Buy - Conclude sales contract and trade terms
2. Obtain export permit
3. Arrange transport
4. Arrange the inspection and fumigation
5. Obtain cargo insurance
6. Provide customs declaration
7. Collect empty container(s) from yard

8. Stuff container(s)
9. Transfer to port of departure
10. Clear goods through customs
11. Handle container at terminal and stow on vessel
12. Prepare documents required by importer
13. Verify the accuracy/authenticity of exported cargo
14. Pay - Claim payment of goods

Exporting Rice from Thailand (chasing time till the vessel leaving the port)

and documents (only 4-6 e-documents)

olders involved

is (123 small steps)

eeded (all together)

or **regulatory** procedures

or **transport-related** procedures

for **traders, banks** and **insurance**
es

预览已结束，完整报告链接和二维码如下：

https://www.yunbaogao.cn/report/index/report?reportId=5_7081

