



**ARTNeT** Capacity Building Workshop on Use of Gravity Modelling

# Introduction to Stata for regression analysis

Instructor: **Yong Yoon**, PhD

Chulalongkorn University

March 19, 2013



Data Analysis and Statistical Software

# Part 1

- **Overview of Stata**

- User interface, command syntax, help system, file management, working with do-file editor
- Updating Stata and accessing user-written routines
- Data management: basic principles of organization and transformation
- Data management tools and data validation
- Introduction to graphics
- Producing publication-quality output

## **User interface, command syntax, help system, file management, working with do-file editor**

- Stata is a general-purpose statistical software package created in 1985 by StataCorp. It is used by many businesses and academic institutions around the world. Most of its users work in research, especially in the fields of economics, sociology, political science, and epidemiology. Stata's full range of capabilities includes \* Data management \* Statistical analysis \* Graphics \* Simulations \* Custom programming.
- Stata has traditionally been a command-line-driven package that operates in a graphical (windowed) environment. Stata version 11 (released July 2009) contains a graphical user interface (GUI) for command entry. Stata may also be used in a command-line environment on a shared system (e.g., Unix) if you do not have a graphical interface to that system.

## getting started

- **Starting Stata**



Double-click the Stata icon on the desktop (if there is one) or select Stata from the Start menu.

- **Closing Stata**

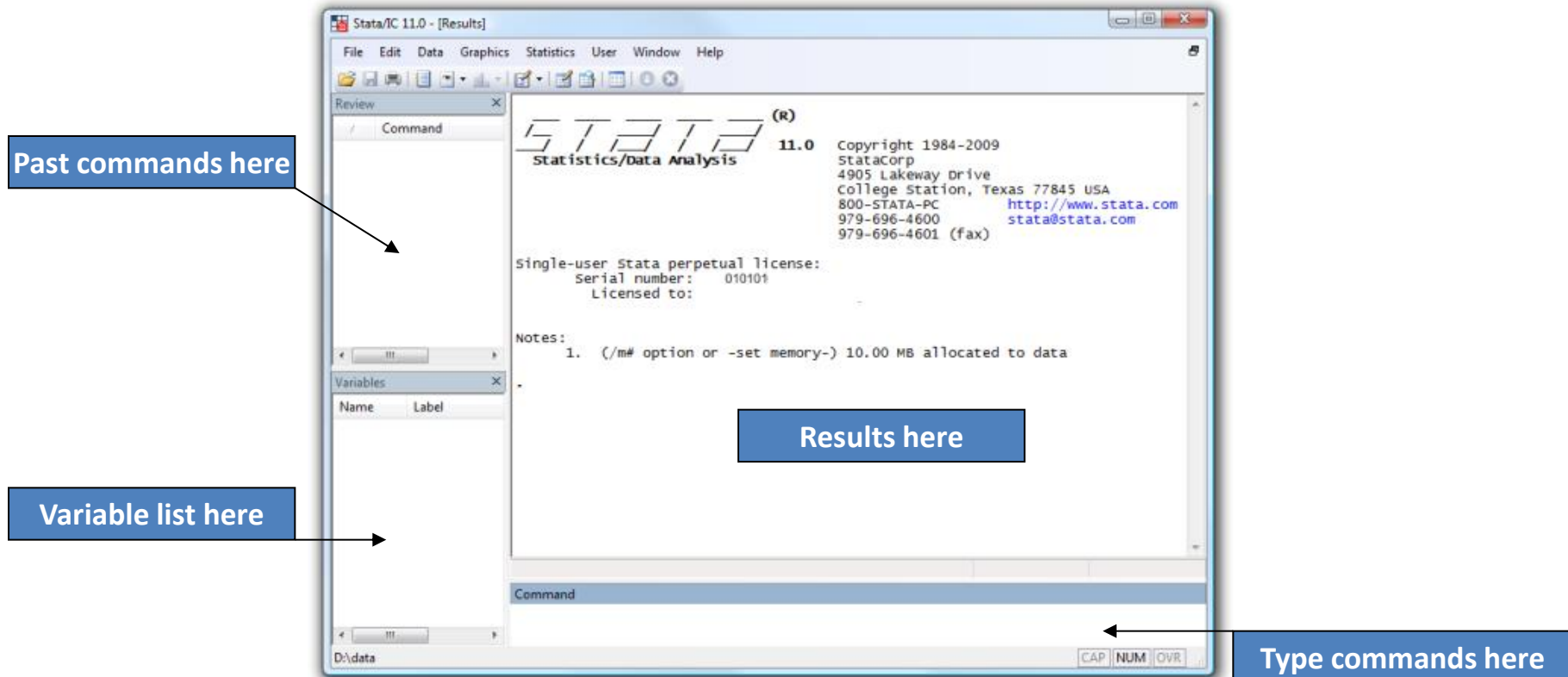
Choose **eXit** from the file menu, click the Windows close box (the `x' in the top right corner), or type **exit** at the command line. You will have to type **clear** first if you have any data in memory (or simply type **exit, clear**).

- **Tip:** Always do your work in an appropriate working directory

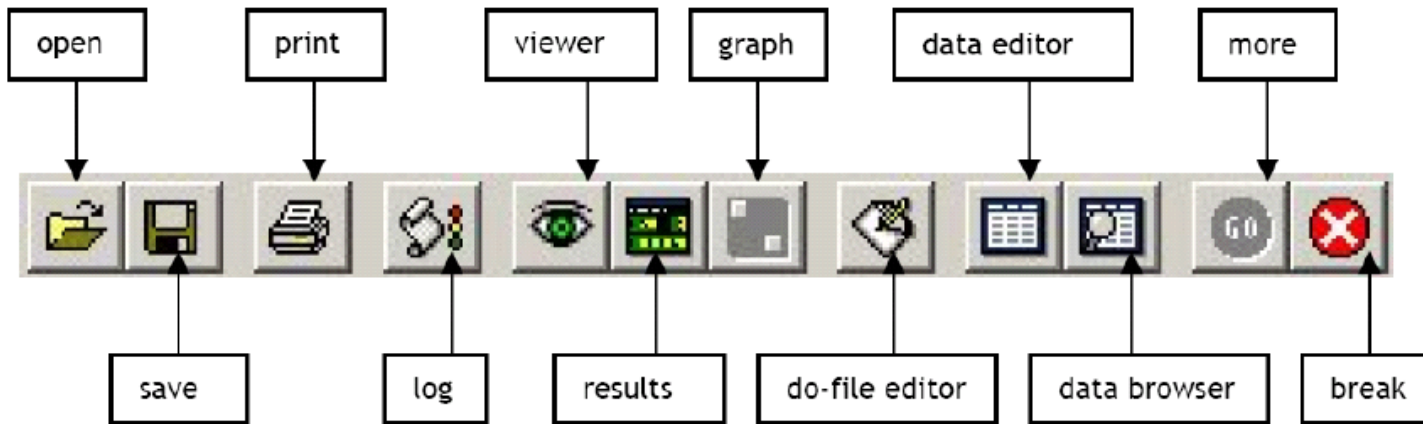
```
. cd c:\data  
. pwd
```

## user interface

- The Stata screen is divided in 4 parts. In “**Review**” you can see the last commands that have been executed. In “**Variables**” you can see all the variables in the current database. In “**Results**” you can see the commands’ output. Finally, in the window “**Command**” you can enter the commands.



## Stata toolbar



- **Quick Notes**

1. Stata is case-sensitive.
2. `.` is the Stata prompt.
3. When you work, **always use a `-do-` file**
4. To see content of a `-do-` file, type, e.g.,  
`. type profile.do`

## first commands

- Stata can be used like a **calculator** by display
  - . `display 2+2`
  - . `display exp(1)`
  - . `display ln(100)`
  - . `display "cumulative area under the standard normal left of 1/96 is " normal(1.96)`
  - . `display ttail(20,2.1)`

Arithmetic		Logical		Relational	
+	addition	~	not	>	greater than
-	subtraction	!	not	<	less than
*	multiplication		or (shift \)	>=	> or equal
/	division	&	and	<=	< or equal
^	power			==	equal
+	string concatenation			~=	not equal
				!=	not equal

## more first commands

- Let's get some data:

```
. use PennTab
. describe
. summarize
. list country wcode year pop rgdpch openk
grgdpch in 1/10
. list country wcode year pop rgdpch openk
grgdpch if wcode == "THA"
. list country year if missing(rgdpch)
browse
```

预览已结束，完整报告链接和二维码如下：

[https://www.yunbaogao.cn/report/index/report?reportId=5\\_7103](https://www.yunbaogao.cn/report/index/report?reportId=5_7103)

