



**Regional Workshop on Geo-Referenced Disaster Risk
Management Information System in South-East and
East Asia and Pacific
20-22 February 2013, Bangkok, Thailand**

COUNTRY PAPER: KIRIBATI

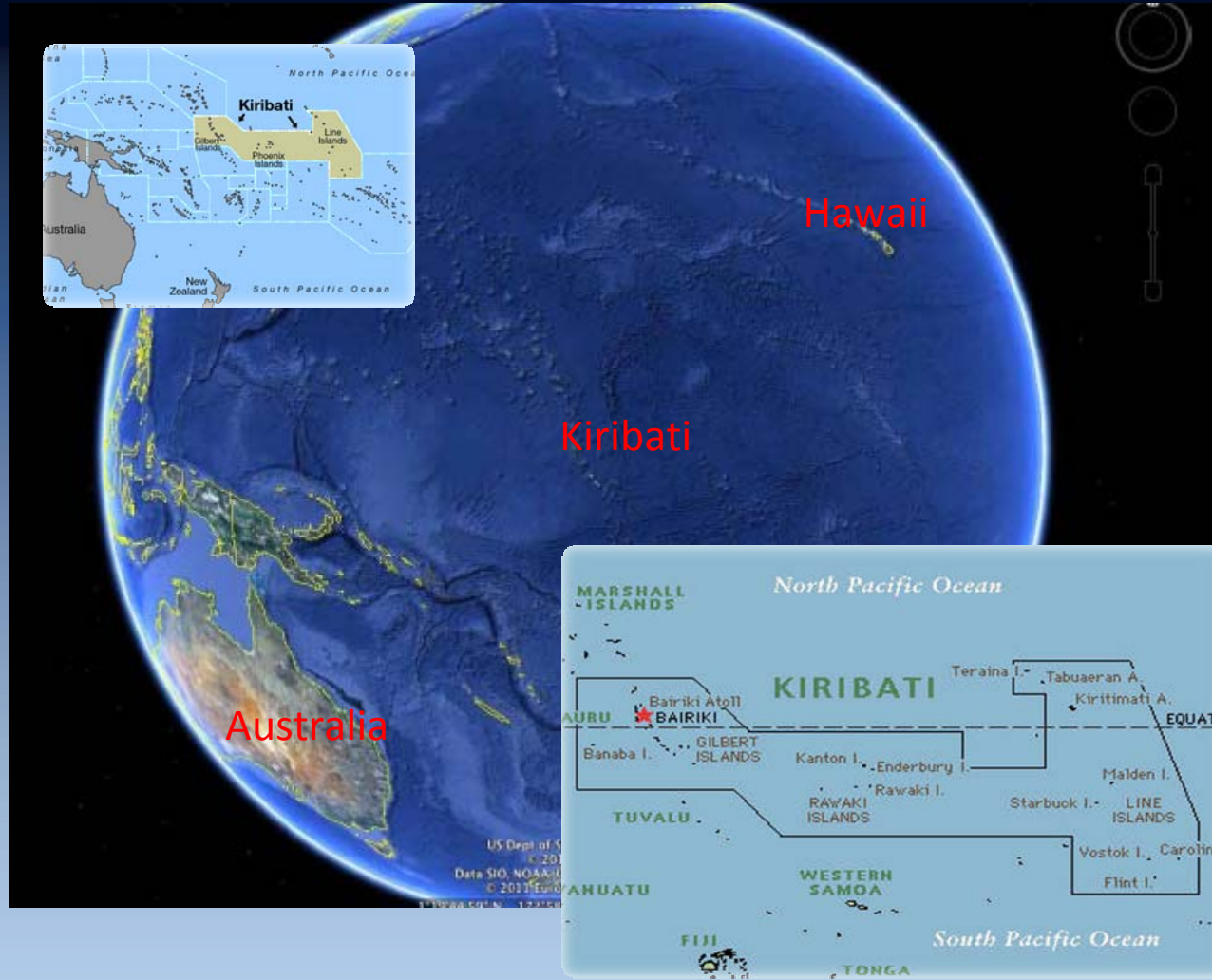


**Strategic National Policy Unit
Office of The President**





Kiribati



Region: Micronesia

Land Area: 811 sq km
EEZ: 3,000,000 sq km

Population : 113,000
(2010 Census)

Terrain: 99% atoll (2
to 3 meters above
sea level & 1 raise
limestone island)



Overview of GIS Utilization: Kiribati

Use of GIS in DRM - Kiribati

Lands Management

Fisheries and Mineral

Telecom and Power Utilities

Agriculture Water Sector

Health and Population

GEO Referenced DRM in Kiribati

- National disaster management portfolio recently assumed by the Office of the President- one man team with no current GIS system and capability .
- GIS systems are operational within different government departments with no central data repository / coordination.
- No centralized geo-referenced system exist. (and we want one!)
- Limited/minimal use of geo-reference system in DRM to date.
- Existing data and GIS systems are mostly for South Tarawa (Capital) only.



Kiribati Experience | Lessons Learnt

Climate Change Risk Mapping

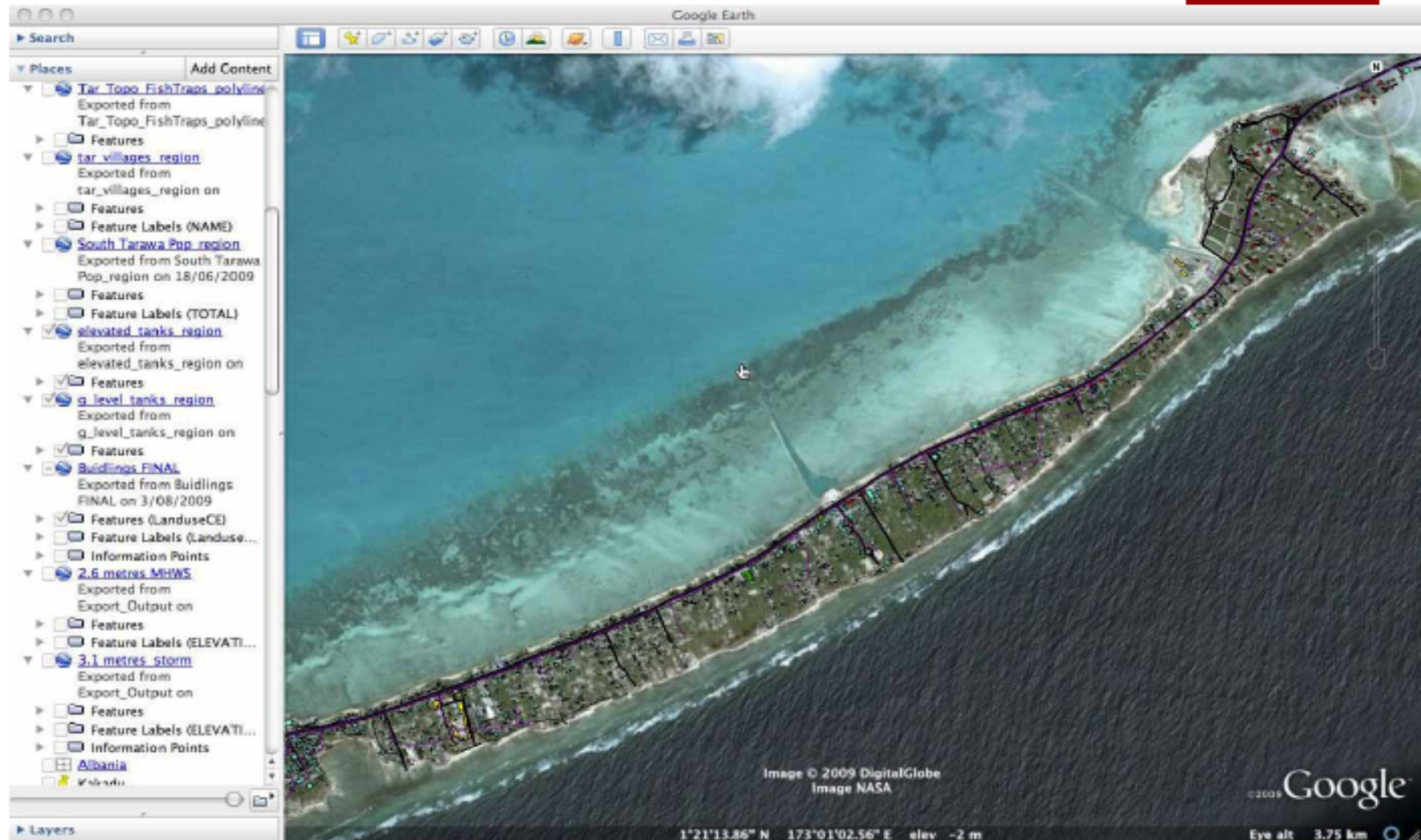
- Assessment focused on potential risk from a rise in mean sea-level, storm-surges and the potential resultant permanent and transitory inundation of low-lying areas.
- Lessons learnt:
 - A lot of data exist and geo reference systems fragmented across sectors
 - Central coordination needs development and support.
 - Lack of long term institutional strengthening on GIS
 - Recent efforts are project oriented.
 - Assessments tend to be site specific /oriented
 - hazard data and vulnerability information being analyzed and stored in different systems
 - Not accessible or unknown to other stakeholders





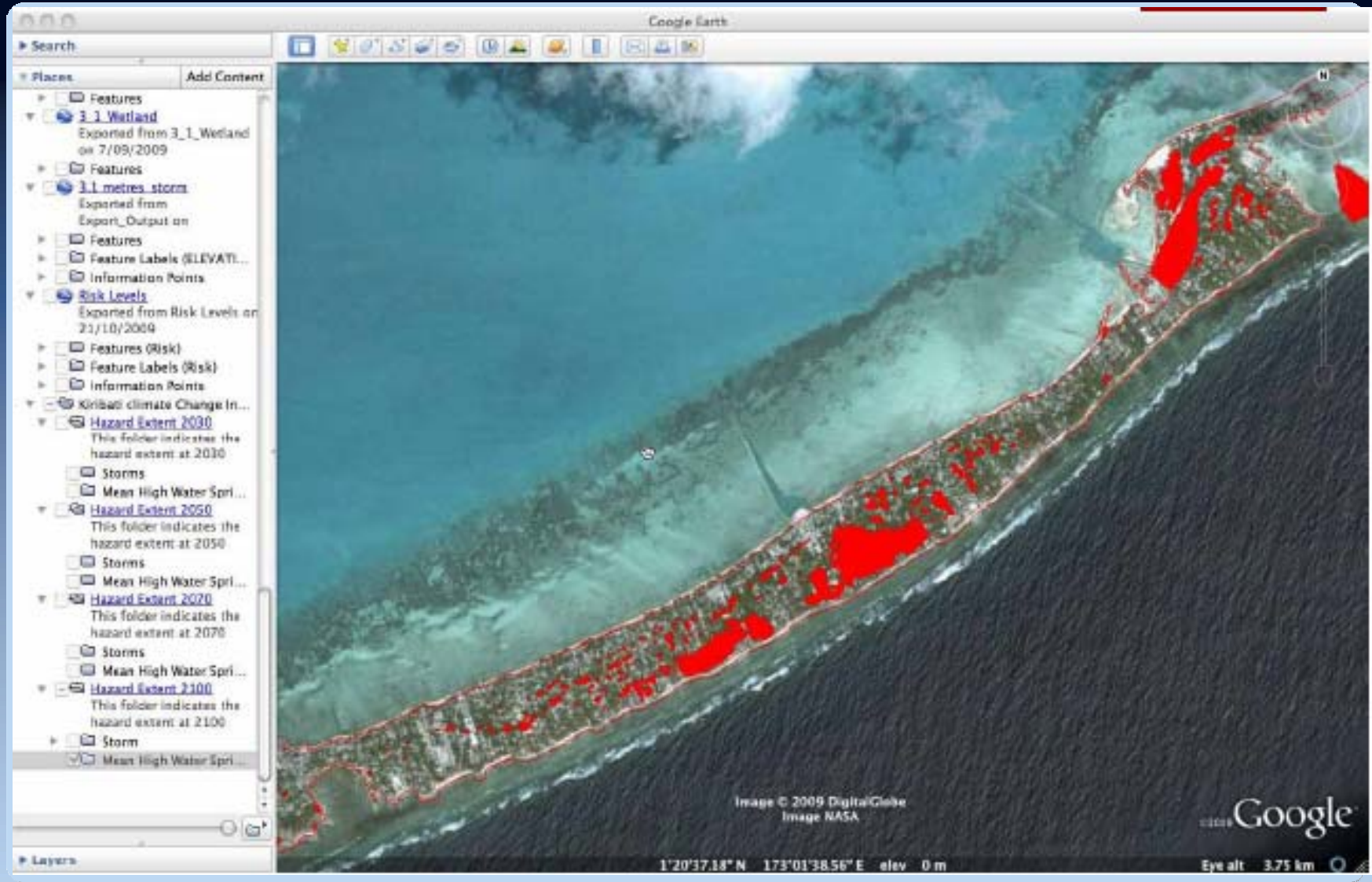
CC Risk Mapping | Kiribati Adaptation Project II

Base Layer + Infrastructure



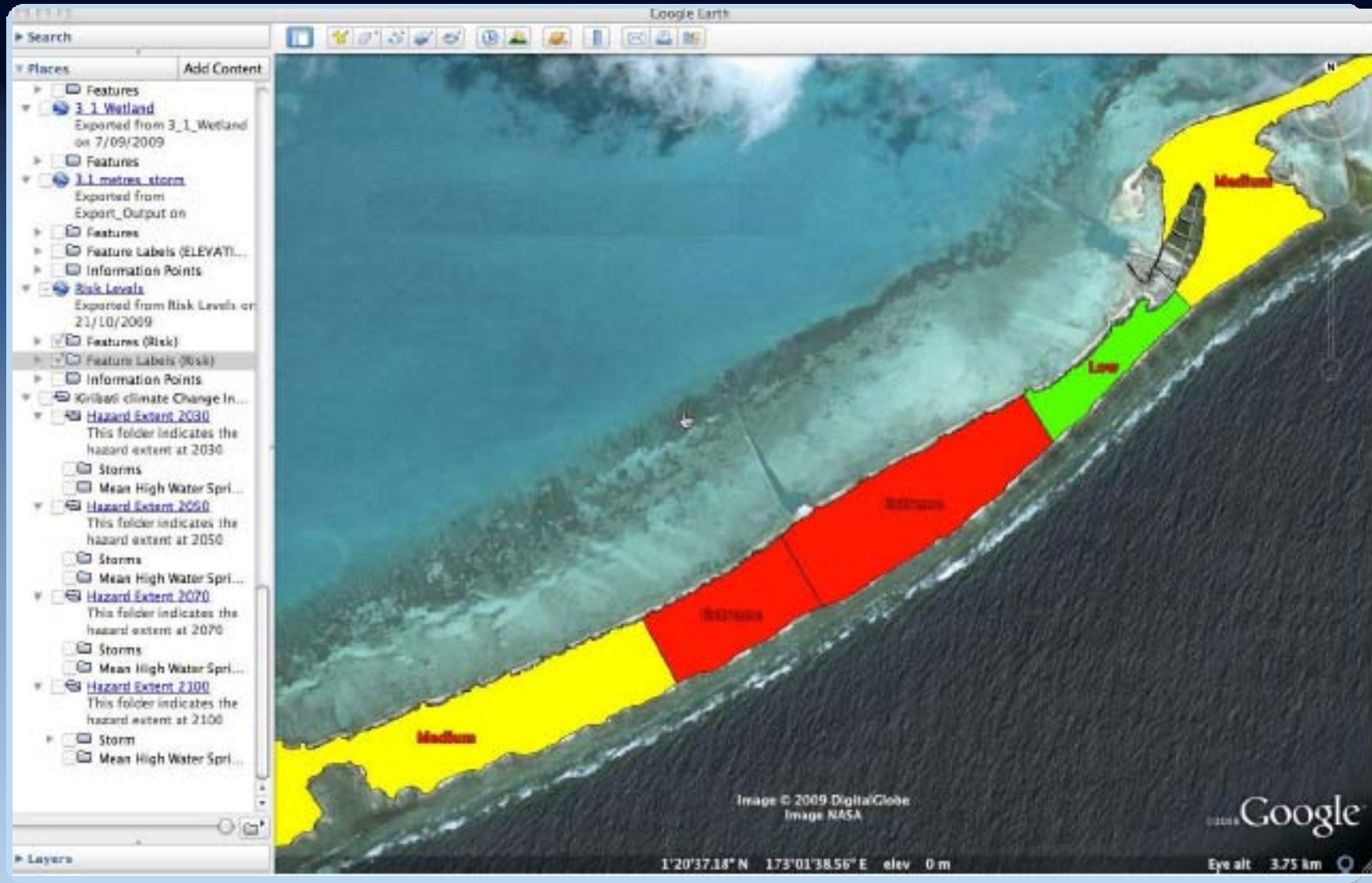


CC Risk Mapping | Kiribati Adaptation Project II

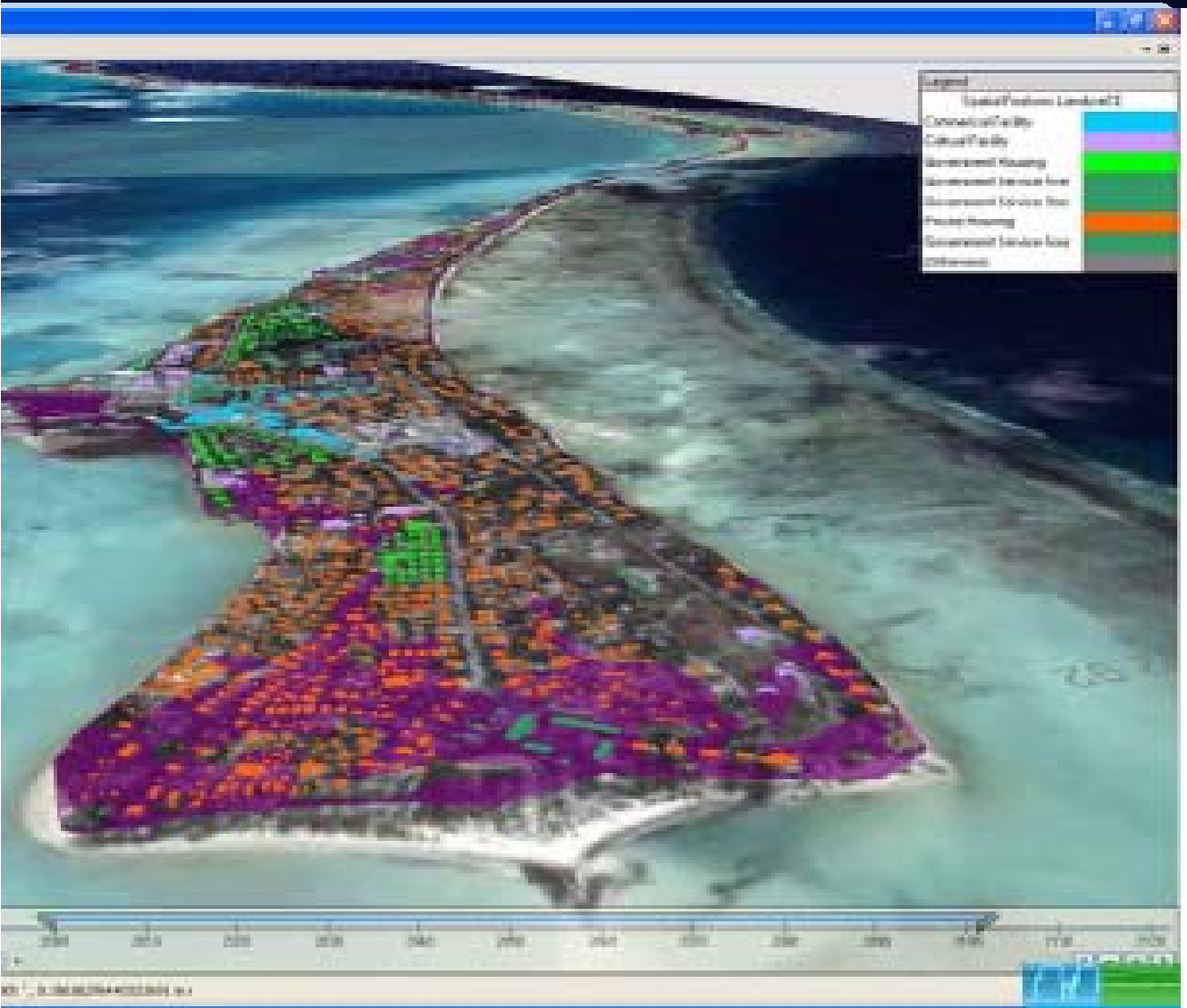




CC Risk Mapping | Kiribati Adaptation Project II



ation Mapping | KAP II



预览已结束，完整报告链接和二维码如下：

https://www.yunbaogao.cn/report/index/report?reportId=5_71119

