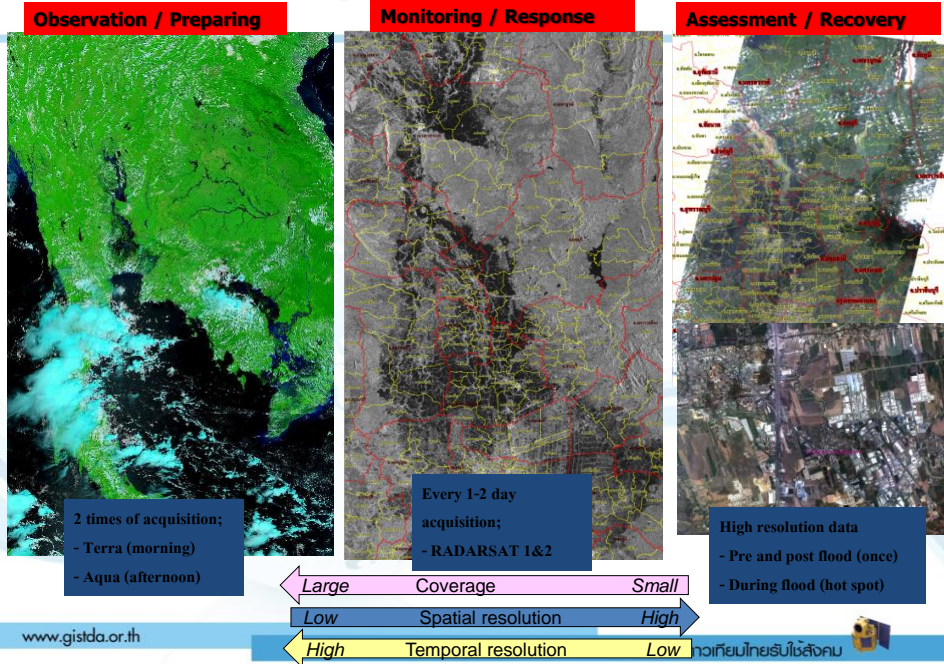


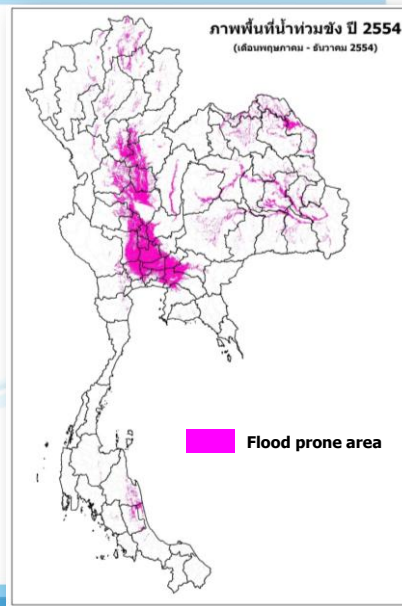
EOS Application for Flood



Thailand Flood 2011: EO satellite data

- 402 Radarsat images
 - 387 THEOS (THAICHOTE) images
 - 482 Terra/Aqua MODIS images
 - ~ 50 satellite images (HR, SAR..)
- from international agencies

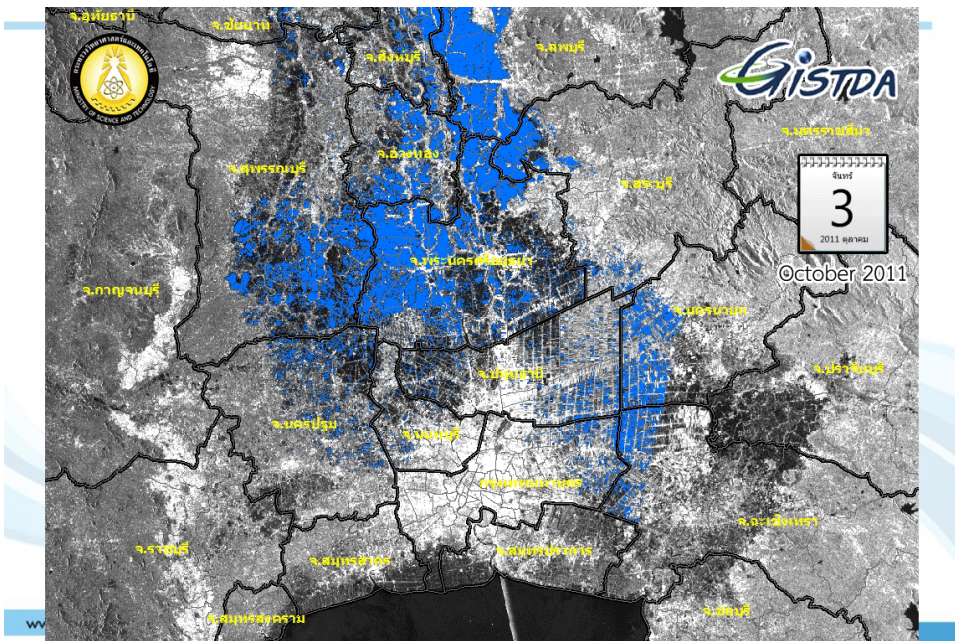
28.69 million Rai / ~45,900 km²



International Collaboration



Flood animation during 3 Oct.-28 Dec. 2011 over greater Bangkok

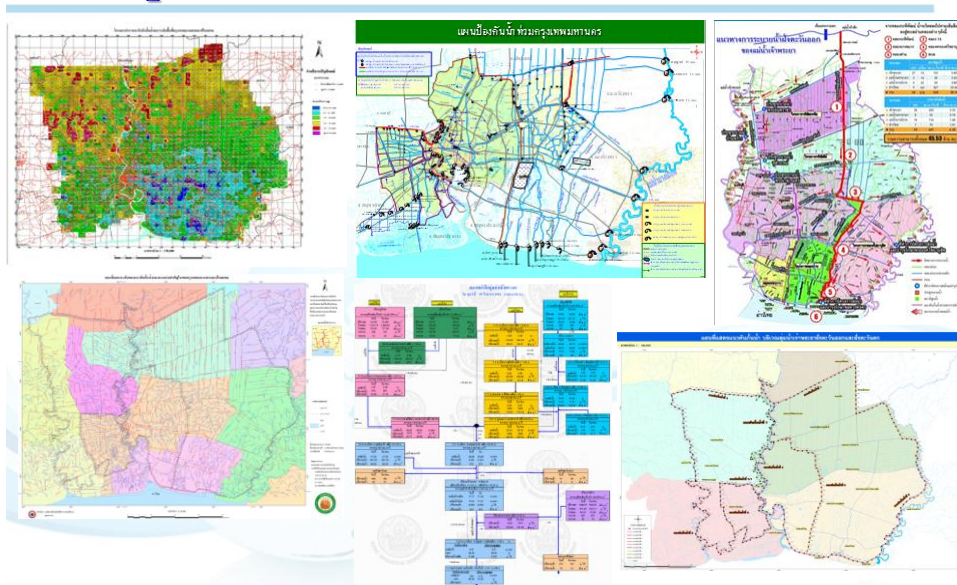


EOS & Gis System for Flood Management



11

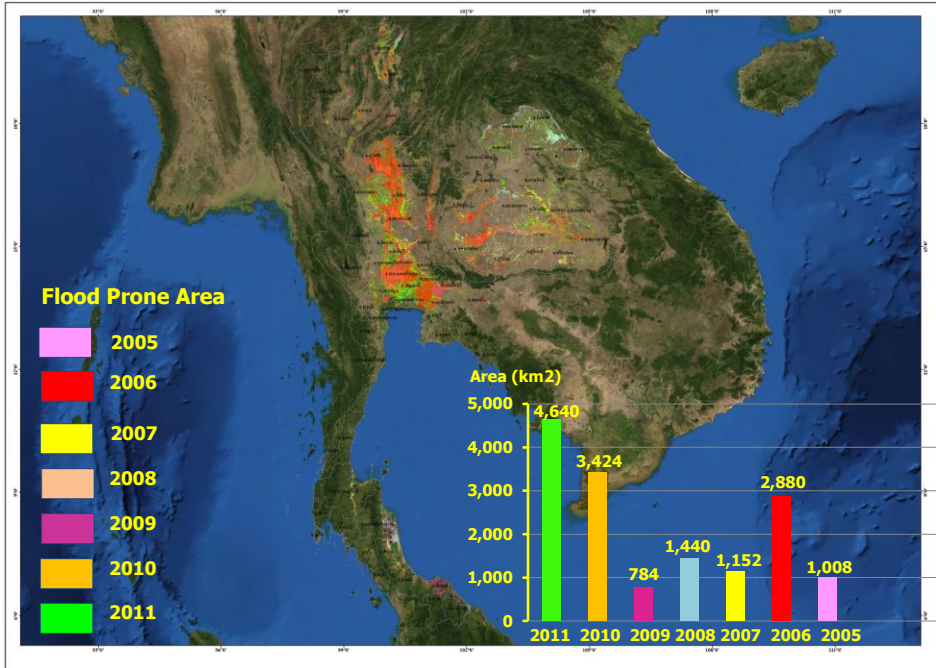
Geospatial & In situ data



www.gistda.or.th

ไทยใต้ : ตัวเดียวไทยรับใช้สังคม

Geospatial Information of Flood Prone Area during 2005 - 2011

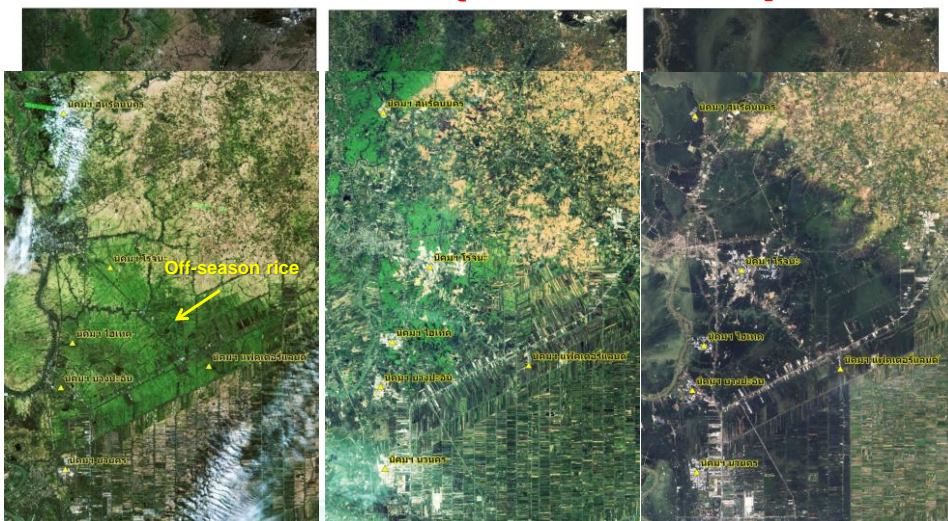


Pre-Post EO Database for Land use Monitoring

1997

2010 (pre flood)

2011 (post flood)

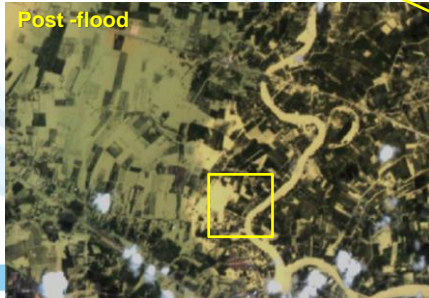
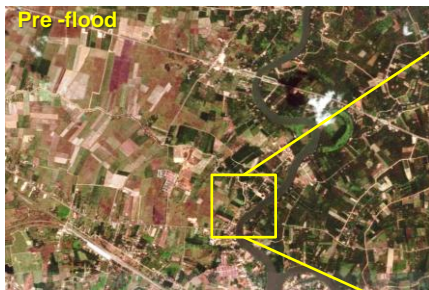


www.gistda.or.th

ไทยเอด : ดาวเทียมไทยเร็กซ์ใช้สังเกต



Satellite Data for Flood Victim Compensation



Identifying of houses in inundated area

ไทยเิด : ดาวเทียมไทยเรินโด่งคม

Thailand Monitoring System (TMS)

Web Map Service for flood, drought, fire, and ocean monitoring



预览已结束，完整报告链接和二维码如下：

https://www.yunbaogao.cn/report/index/report?reportId=5_7122

