

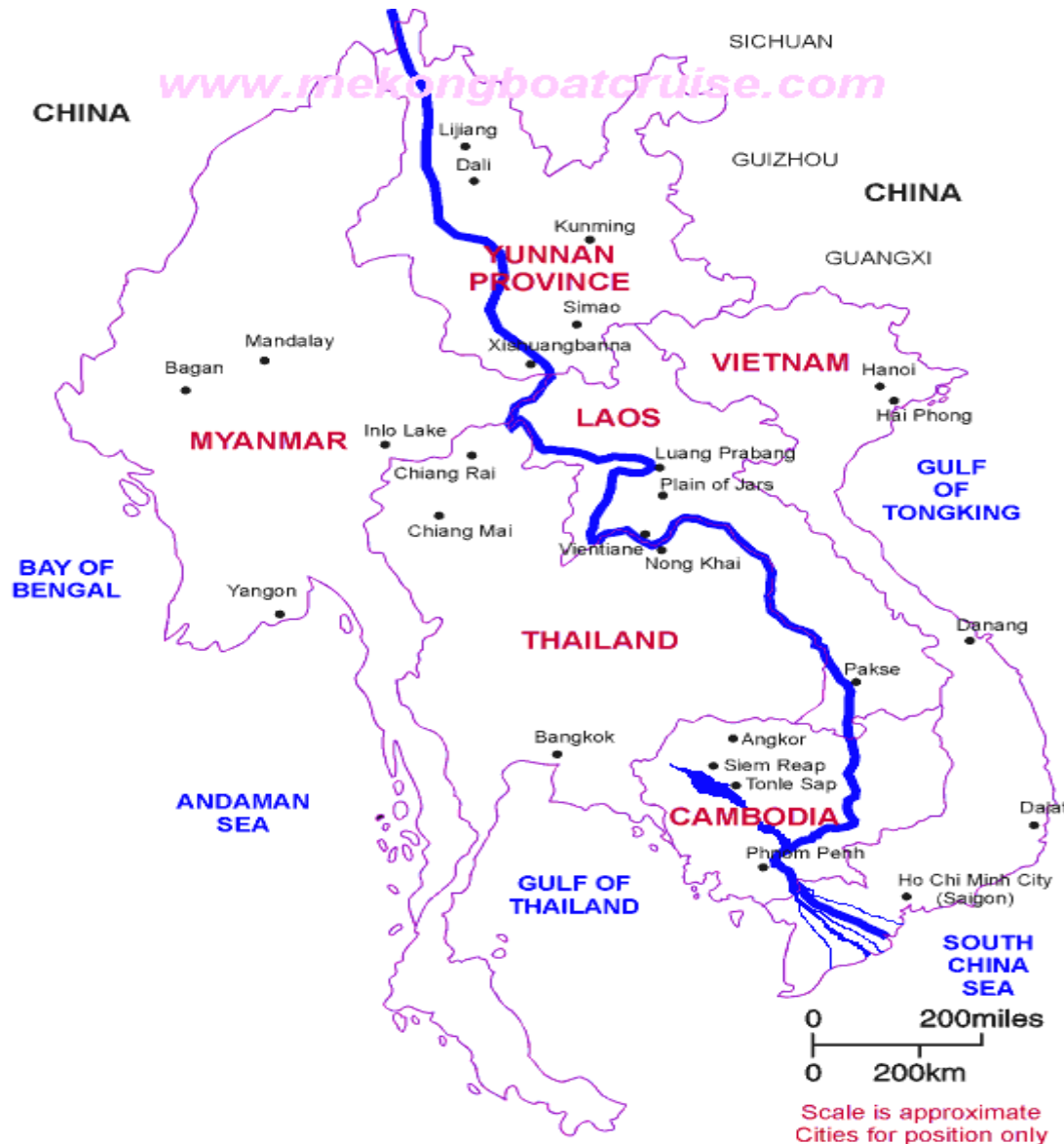
Regional Workshop on Geo-referenced Disaster Risk Management  
Information System in South-East Asia, and the Pacific  
20-22 February 2013, in Bangkok, Thailand

# **Geo-Referenced Information System for DRM in Lao PDR**

**Presented by:**

Mr. Vilayphong SISOMVANG, Director of National Disaster Management  
Office, Social Welfare Department, Ministry of Labour and Social Welfare, Lao  
PDR

# Introduction



- ? **Landlocked country**
- ? **Three geographical regions:**  
Northern Central and Southern
- ? **Population of 6,8 million**
- ? **Area of 236,800 square Km; 70% mountainous areas 30% lowland**  
(Population concentrated & economically active areas)
- ? **80% of population depends on the subsistence farming**
- ? **MEKONG River Length: 1.865 km (flow through Laos)**
- ? **There are 13 major tributaries**

# Major Disasters in Lao PDR

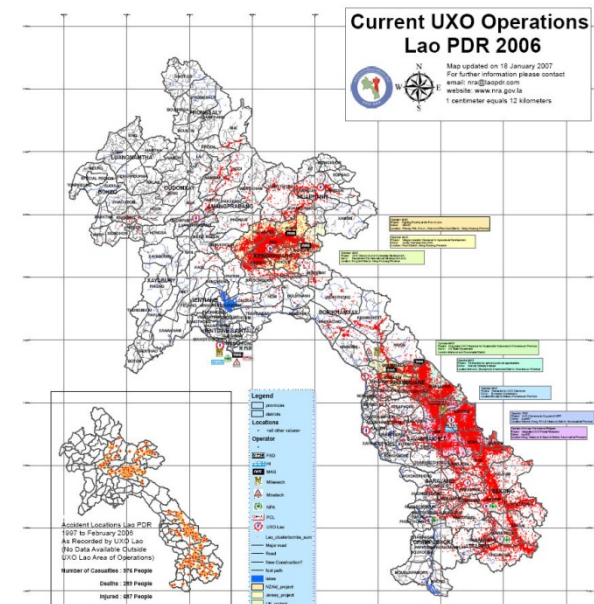
## Great Impacts on Sustainable Development

UXO

Fire (Forest and Urban)



Flood



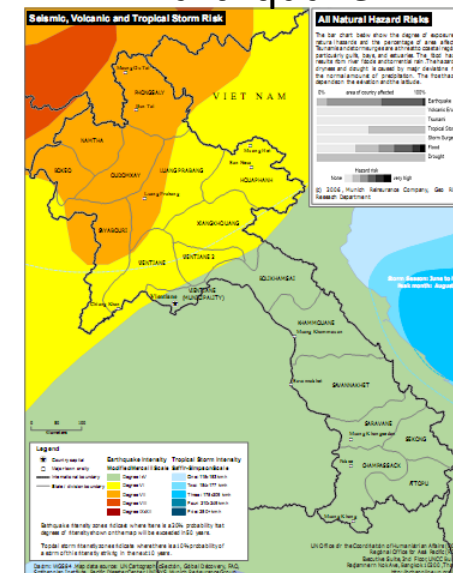
Drought



Storm



Earthquake





## ❖ Recent Disasters

- **August 2008** – Mekong Floods by STS Kammuri (0809), *150.000 people affected in 7 provinces*



Flood in August, 2008 at Sikhottabong district of Vientiane Capital



Flood in August, 2008 at Thakhek district of Khammuane province

## ❖ Recent Disasters con't

- **End September 2009** – River flashfloods by Typhoon Ketsana (0916)



Province : 5

District : 43

Village : 822

Population : 272,943 people

Dead : 28

Missing : 1

Injured : 91

Household : Displaced Household: 10,670.

Rice fields : 31,967 hectares of rice and crop fields were damaged

and significant numbers of livestock  
destroyed Infrastructure : 3,178 houses affected;  
1,194 houses damaged completely.

Schools: 58. Hospitals: 10. Irrigation: 144. Roads: 47

**Total damaged cost around 58 million USD**



## Flood Affected by **TS HAIMA & TS NOCK –TEN 2011**

- Almost 12 provinces affected
- 429.954 people (Women 218.154 persons) , 82. 493 households ,1.790 villages, 96 districts and 42 persons were killed.
- The flood also severely damaged housing of people , basic infrastructures of Agriculture , public work and transport , health centers, schools electricity, water supply , natural water pipe , latrines , tourism sites, industry and trading , etc ....
- The most severely affected provinces are : Xiengkhuang , Khammuane, Champasack Sayabuly , Vientiane and Bolikhamxay.
- The total damages cost estimate around 1,764,547,062,641 Kips



# **National Disaster Management Framework in Lao PDR**

- **Legal Framework**

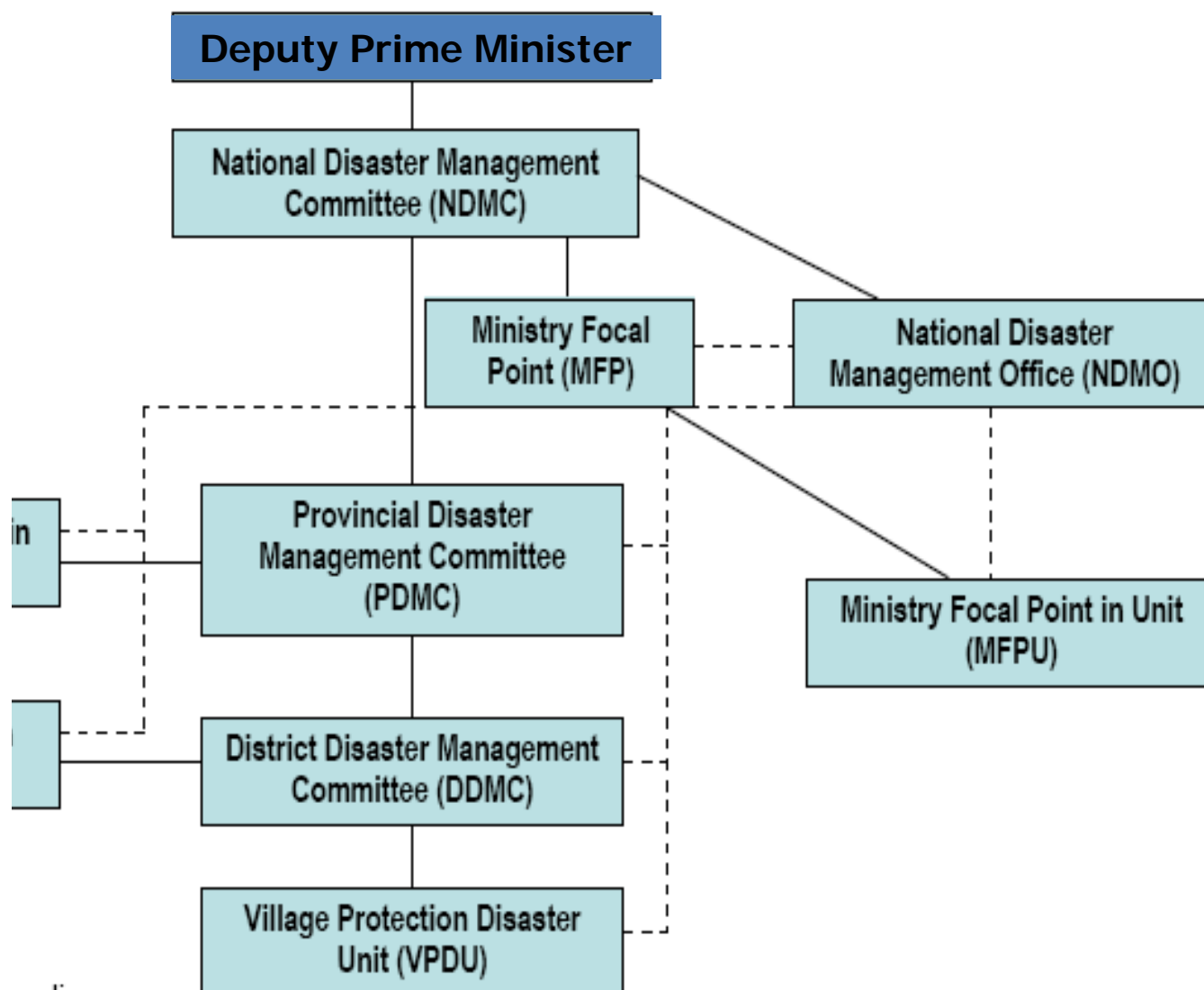
- National Disaster Management Committee
- National Disaster Management Office Provincial
- Disaster Management Committee District
- Disaster Management Committee Focal point at all levels
- Strategic Plan on Disaster Risk Management

[https://www.yunbaogao.cn/report/index/report?reportId=5\\_7128](https://www.yunbaogao.cn/report/index/report?reportId=5_7128)

预览已结束，完整报告链接和二维码如下：



## The NDMC Diagram



ing line  
ation line