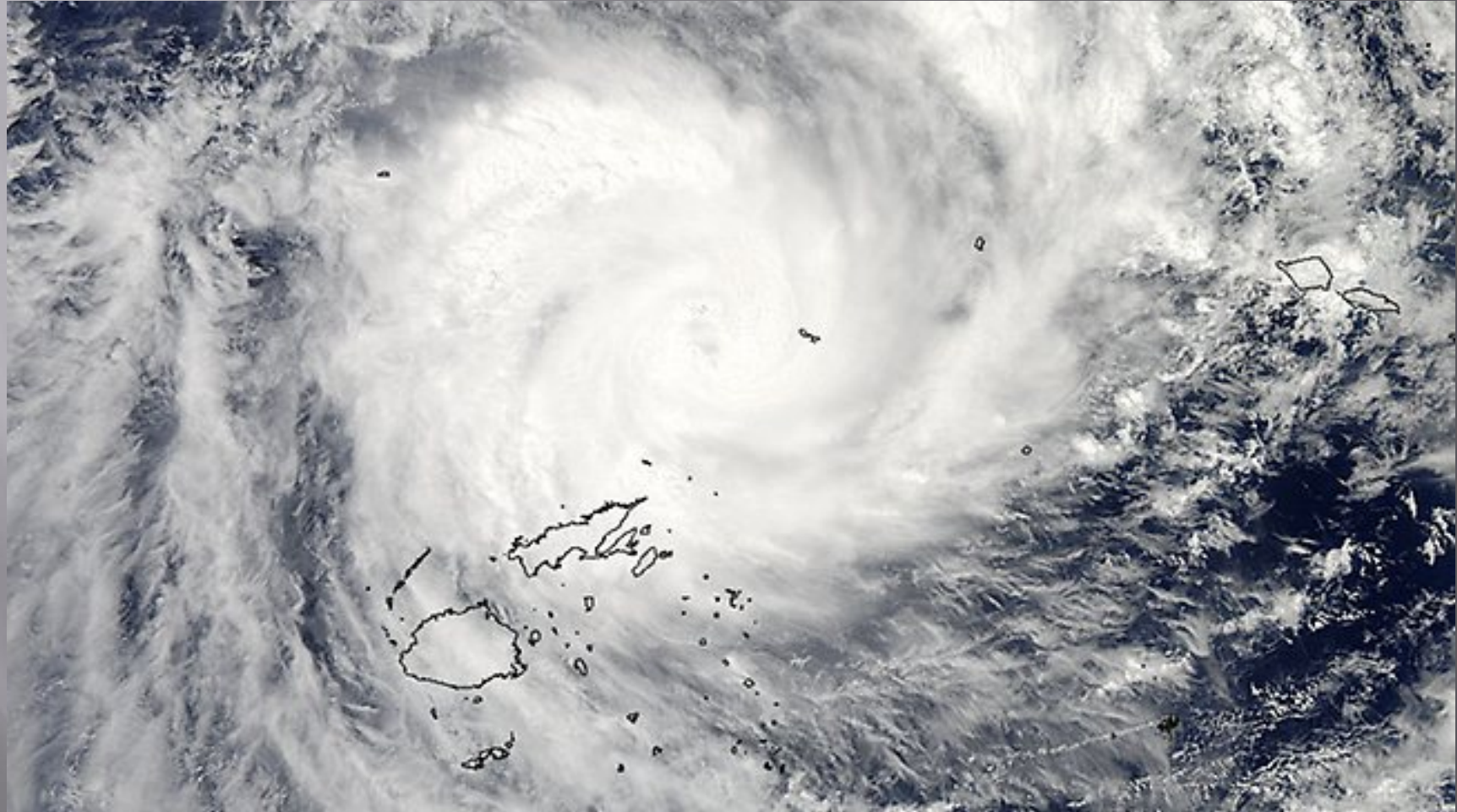
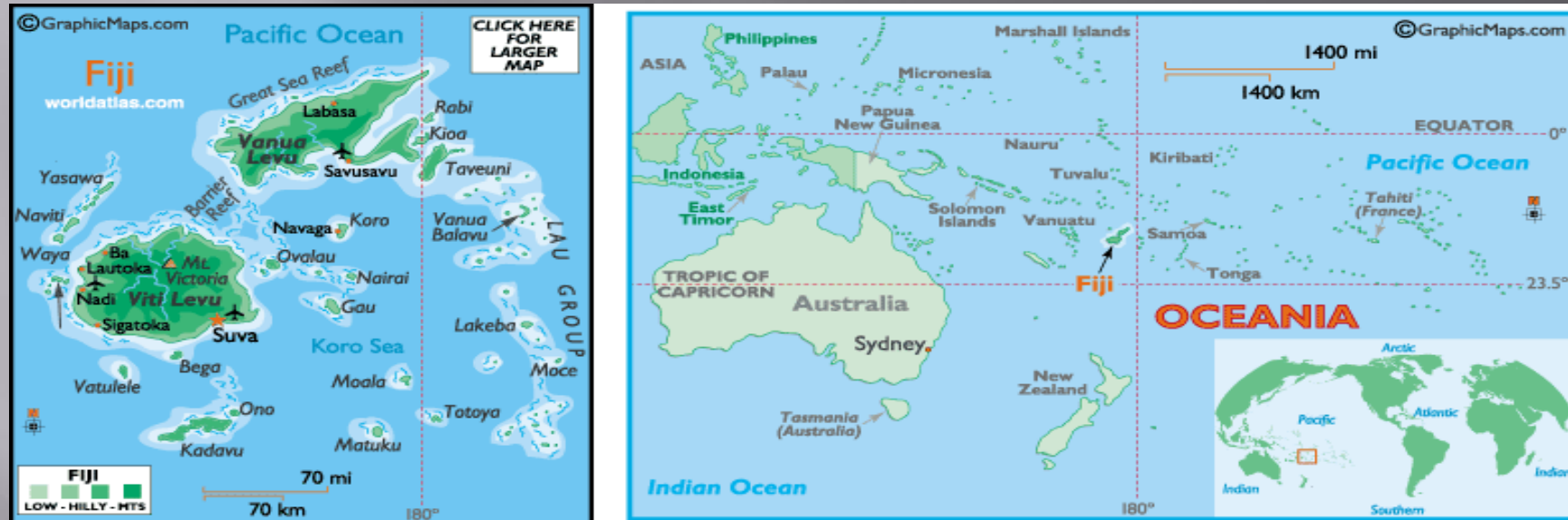


# Disaster Management - Fiji



**Fiji Scenario – by Samuela Naicegucegu**

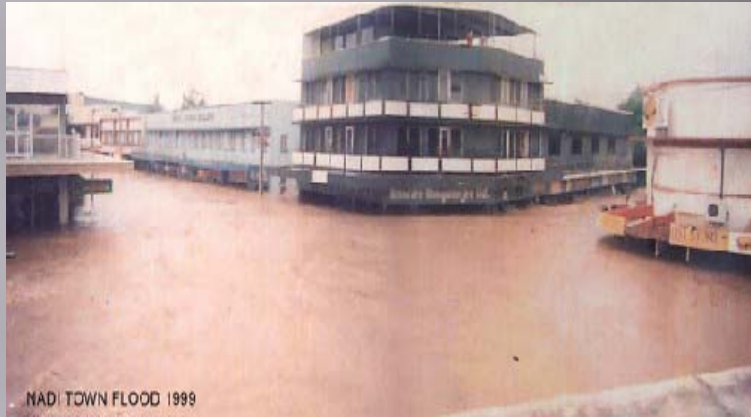
# Fiji in the South Pacific



Source: internet

Land Mass – 18,400 km<sup>2</sup> made of some 300 islands  
Population - 837,271 in 2007 census  
Economy – GDP (per capita) in 2010- 6182.8

# Disaster Management in Fiji



share similar sustainable development challenges as other small islands  
small but growing populations, remoteness, susceptibility to natural disasters,  
vulnerability to external shocks, and fragile environments.

# Disaster Management Status

- ❑ Heavy reliance on our existing infrastructures
- ❑ More inclined to customary knowledge on natural phenomenon and government assistances
- ❑ Acceptance of fate as call of God and nature
- ❑ More of reactive in nature than being proactive
- ❑ Lack of economic resources undermine efforts to be proactive
- ❑ Continual change in managerial positions for Disaster and lack of technical skills within

# Drivers for Disaster Data

- ▣ Global concerns on environment and climate changes



- ▣ More awareness of the need for relevant technology to be adopted if quality data are to be available
- ▣ Reliance on Mapping agencies core activities
- ▣ Effective and efficient Resources Inventories
- ▣ **SUSTAINABLE DEVELOPMENT**

out of INDIVIDUALISTIC NEEDS and  
ASPIRATIONS

-Creation of different data sets by different  
institutional arrangements



Regional Organizations INITIATIVES and  
CONSULTANCIES

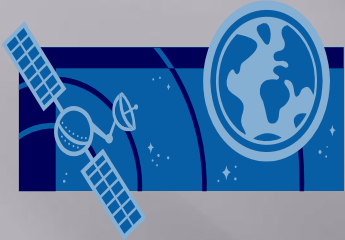


**Technology ??**  
**Capacity building**

Answer to GLOBAL CONCERNS.....UN etc

**Geospatial Data Aspirations**

# Need for Technology



Growing number of sensors in space

Developments of UAV – unmanned airborne vehicles



data by Goggles, Twitters etc.

Cloud



3D data

Real time data – Crowd sourcing



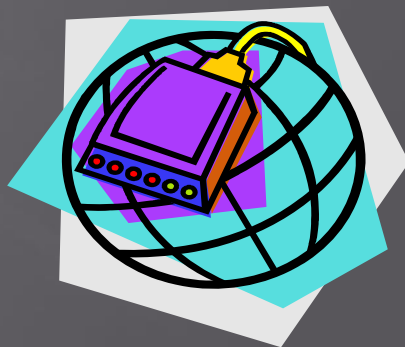
Open source

# of Disaster Management Agencies

**Spatial literacy is important**

**Adaptation to technology and the recognition of the need to evolve**

**National Disaster Agencies as manager of relevant data sets**



encourage the involvement of the general public



**s of data/information**



预览已结束，完整报告链接和二维码如下：

[https://www.yunbaogao.cn/report/index/report?reportId=5\\_7130](https://www.yunbaogao.cn/report/index/report?reportId=5_7130)

