



Geo-referenced information management for disaster risk management: prospects and challenges in the Pacific



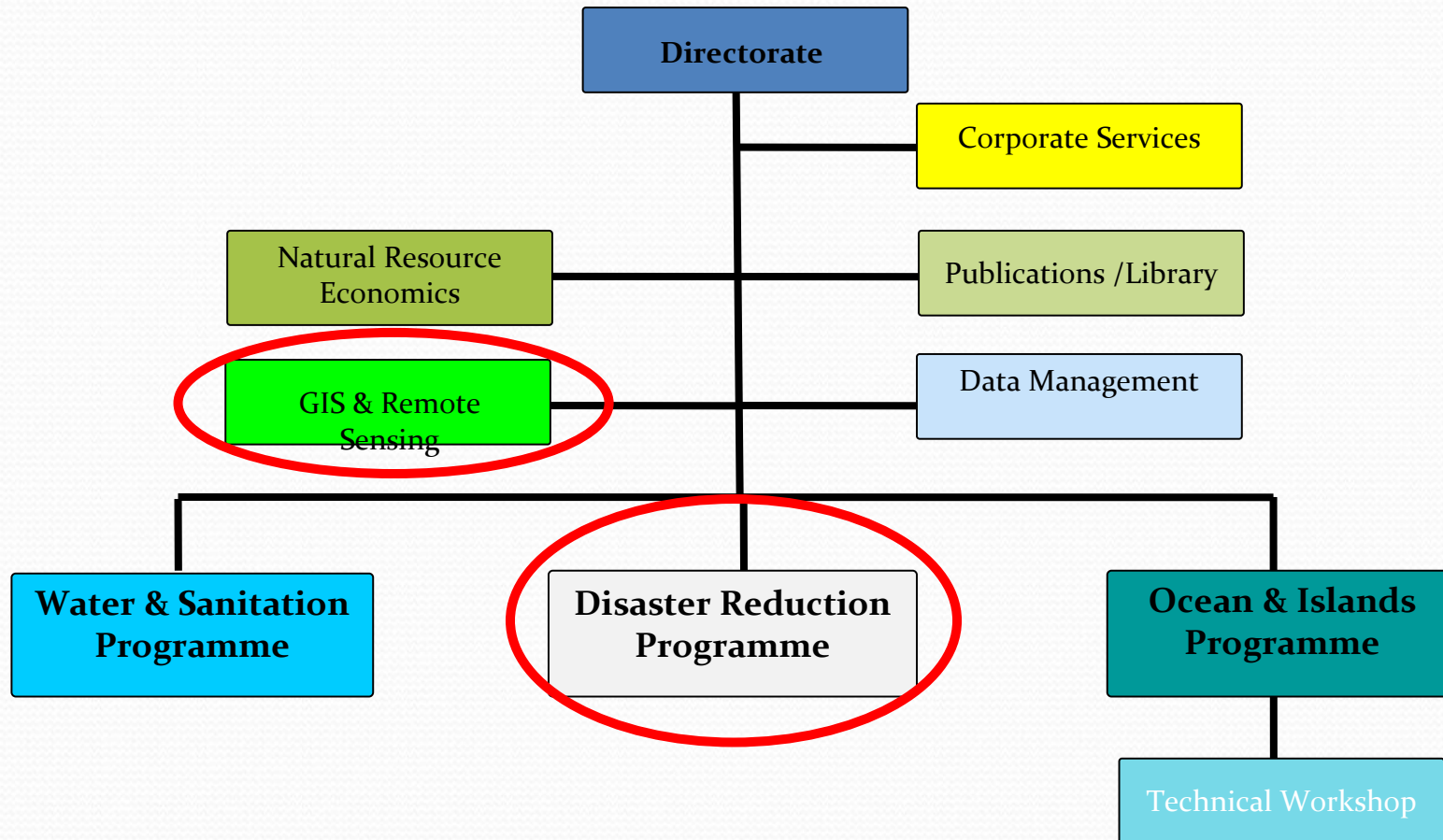
Applied Geoscience and Technology Division - SOPAC

Joy Papao, Risk Information Systems Officer

Secretariat of the Pacific Community - SPC

- 22 Pacific Island States
- Head office in Noumea, New Caledonia
- 2 Regional offices (Pohnpei and Honiara)
- 600 staff
- 9 Technical divisions
 - Economic Development Division
 - Education, Training and Human Development Division
 - Fisheries, Aquaculture and Marine Ecosystems (FAME) Division
 - Land Resources Division
 - Public Health Division
 - Statistics for Development Division
 - Strategic Engagement, Policy and Planning Facility (SEPPF)
 - Operations and Management Division
 - **Applied Geoscience and Technology Division (SOPAC)**

Applied Geoscience & Technology Division



Role of GIS Section

- Image data management (catalogues, database maintenance)
- Providing technical advice on imagery (type, resolution, specification)
- Image selection & acquisition (archive, new collect)
- Image data pre-processing (rectification, atmospheric correction)
- Analysis (Semi automatic analysis, network analysis, spatial analysis)
- Conduct technical training (MapInfo, Map Basic, Erdas, ArcGIS, QGIS, GPS)

Disaster Reduction Programme

- provides technical and policy advice and support to strengthen disaster risk management practices in Pacific Island Countries and Territories
 - DRM Policy & Planning
 - Risk Reduction
 - Community based DRM
 - Pacific DRM Training
 - Pacific Disaster Net
 - Disaster Management
 - Disaster Risk Reduction in Eight Pacific ACP States (B-Envelope)
 - Supporting Disaster Risk Reduction (DRR) in Pacific Overseas Countries and Territories (OCTs)
- Use GIS & RS in our various work programmes for different applications

WINDS ANTENNAE

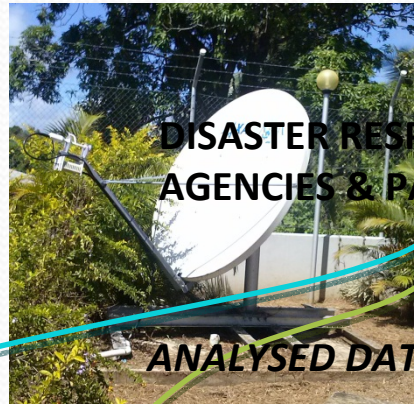
- Installed at the Government of Fiji ITC complex
- Maintained by ITC staff
- Standard procedure for requesting and accessing imagery via Sentinel Asia established
 1. request JAXA by email for proposal to use the WINDS antenna for receiving commercial data when disaster occur
 2. request the emergency observation request to Sentinel Asia
 3. JAXA also receives emergency observation requests sent to the International Disaster Charter via UNOOSA/UNOSAT
 4. ITC Fiji is contacted by JAXA once image is uploaded
 5. ITC Fiji contacts NDMO and SOPAC once data is prepared
 6. Imagery downloaded by SOPAC and NDMO and distributes as required
- Pre and post disaster image products were provided in February 2012



PROCESS

Disaster Occurs

WINDS ANTENNAE ITC Services



DISASTER RESPONSE AGENCIES & PARTNERS

DATA RECEIVED

ANALYSED DATA

REQUEST

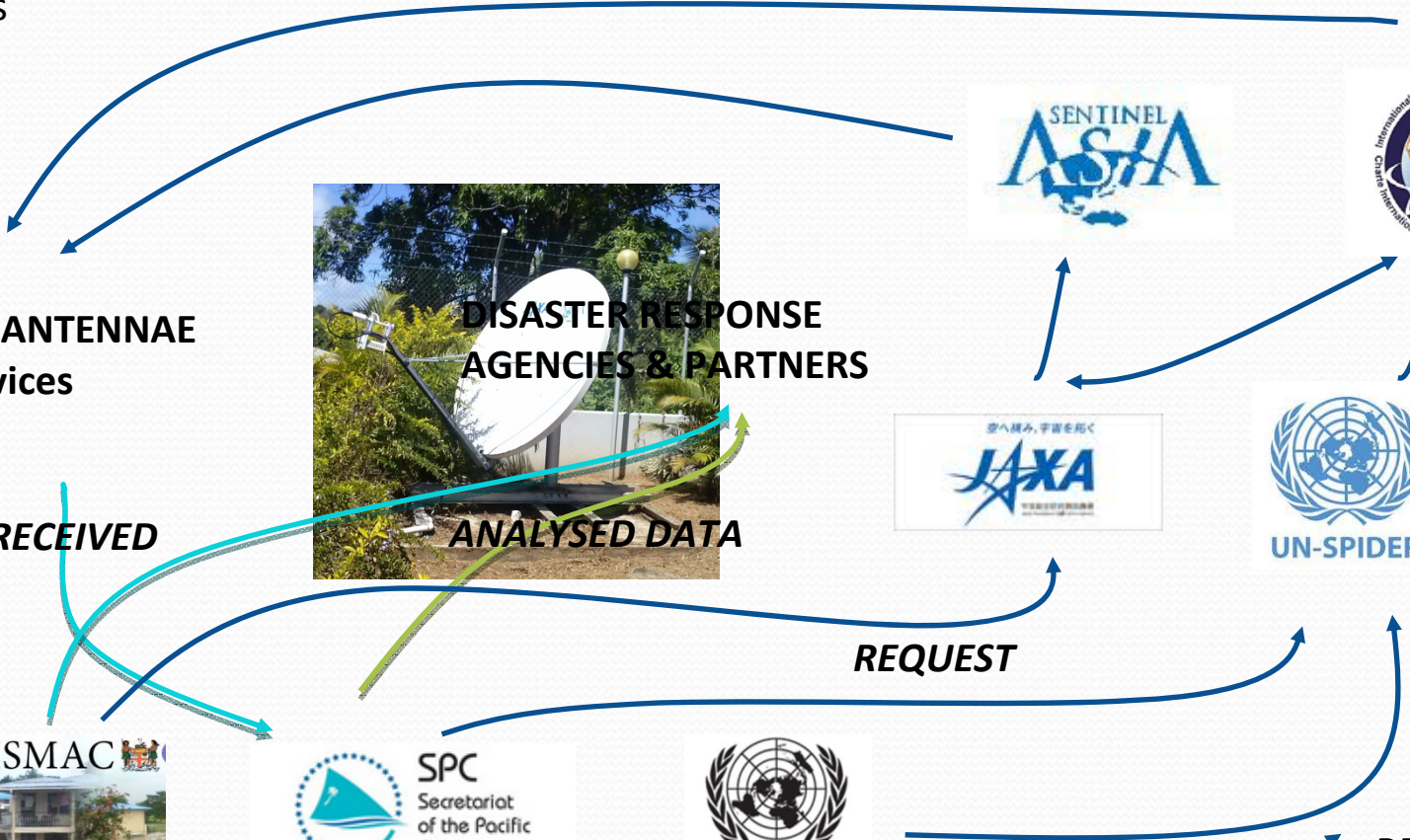


REQUESTING ORGANISATIONS

REQUEST

DATA RECEIVED

ANALYSED DATA



https://www.yunbaogao.cn/report/index/report?reportId=5_7134

预览已结束，完整报告链接和二维码如下：



EXPERIENCES/USES

ment in the Solomon Islands (Dec 2012)
assessment, logistics, planning, relief)
ment in Samoa (Dec 2012)
esource mapping in Pitcairn (Jun 2012)
y (how best to improve water accessibility)
isments in Fiji (Jan/March 2012)
tion, extents, maximum flood heights
isment in Solomon Islands (2009)
ctions, investigating cause of river diversions
tion mapping in Suva