

# **Investment Policy Reform in Myanmar**

**Aung Naing Oo**

**Director General**

**Directorate of Investment and Company Administration**

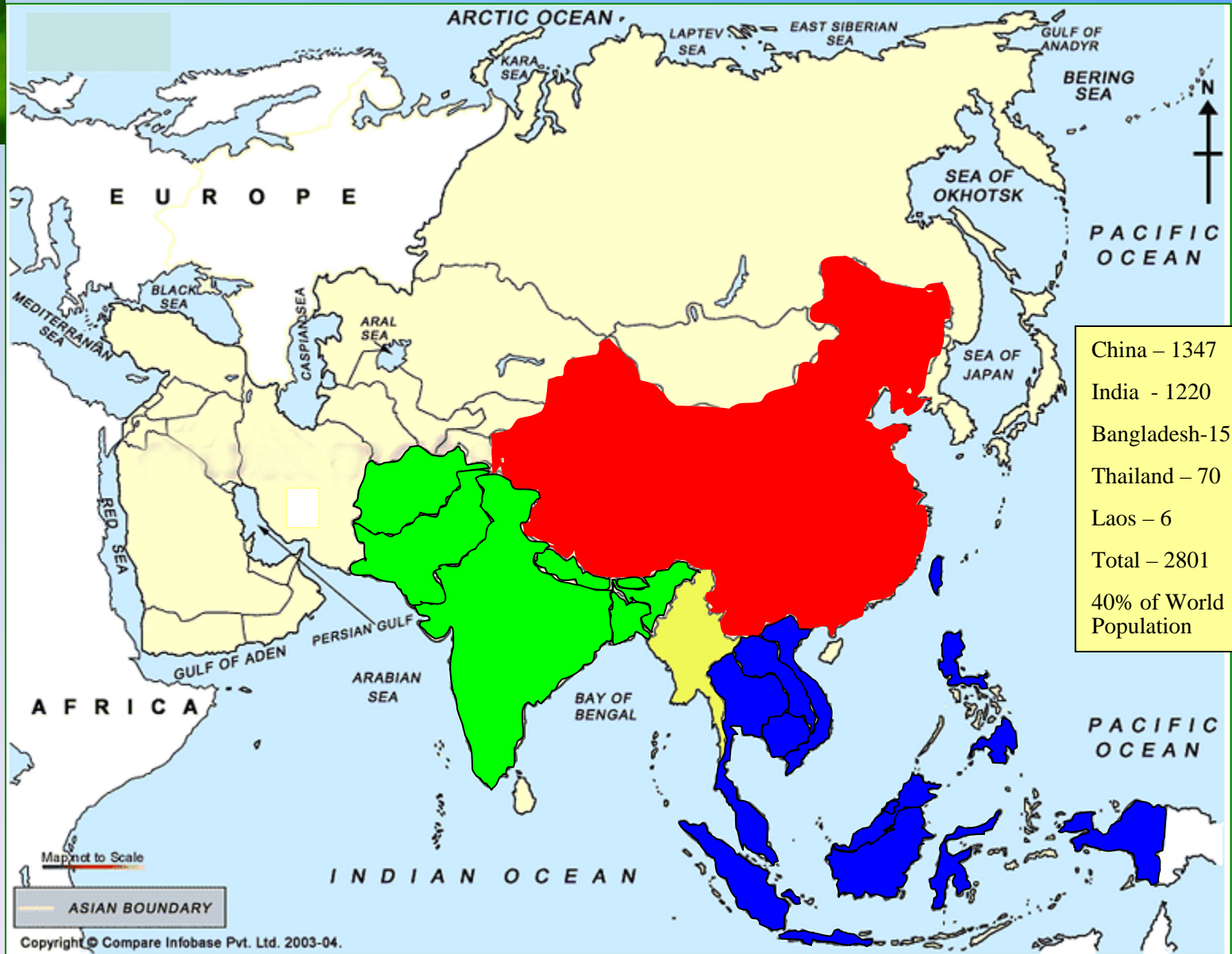
# Outline



- Myanmar in brief
- Investment in Myanmar
- Change in progress
- Reforms
- Challenges
- Conclusion

# Highlight of Myanmar

## Strategic Geographic Location



# Highlight of Myanmar

Rich in Natural Resources



10<sup>th</sup> largest resources of natural gas in the world,  
over 90 trillion cubic feet



Expansive forest which covers half of total area of the country,  
exports 80% of world teak supply

Fertile land for agriculture which amounts 19.3 million hectares  
arable land and out of these, over 6 million hectares  
have not yet been exploited



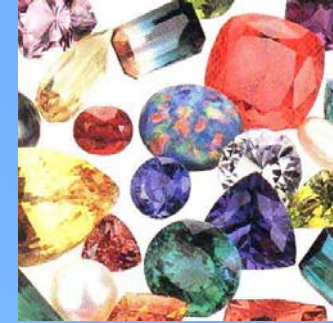
Fishery resources currently being used is less than 60% of  
sustainable yield, potential of 1.05 million MT of  
fish and fishery product

# Highlight of Myanmar

Rich in Natural Resources



Abundance of precious gem stone such as ruby, sapphire, jade and diamond. Ruby accounts for 90% of world supply and the largest jade resource country in the world.



Has gold deposit across the country



Copper is the largest export of mining product



Others mining product such as silver, lead, tin, tungsten and antimony deposit are widespread in the country



# Highlight of Myanmar

Modest Human Resource



- ◆ Over 60 million population with working age of 37.35 million, 62.25% of total population
- ◆ Over 91% of population is literate which is highest in the region
- ◆ Much of Myanmar's intellectual speaks English
- ◆ Relatively low wage



# Highlight of Myanmar

Picturesque Landscape as Potential for Tourism



- ❑ The only country which has snow-caped mountains in South East Asia



- ❑ Rich in cultural and religious heritage



- ❑ A unique country of diversity



- ❑ Pristine beaches along its 3000 km costal line



# Investment in Myanmar

Revision of Myanmar Foreign Investment Law (FIL) was enacted on 30 November 1988 and the parliament has enacted a new foreign investment law on 2<sup>nd</sup> November 2012.

Special Economic Zone Law was also enacted in January 2011 and is now proceeding for amendment.

Yan Lwee Special Economic Zone Law was also enacted in January 2011.

预览已结束，完整报告链接和二维码如下：

[https://www.yunbaogao.cn/report/index/report?reportId=5\\_7224](https://www.yunbaogao.cn/report/index/report?reportId=5_7224)

