

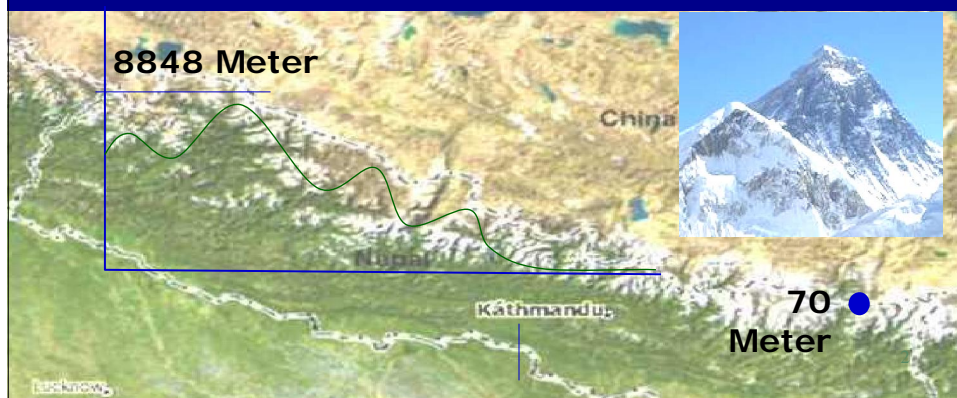


Responses and Challenges: Case of Seti River Flood

Presented by
Shankar Prasad Koirala
Ministry of Home Affairs
Government of Nepal

Nepal is a beautiful country, but

is a disaster prone country. Its rugged and fragile geophysical structure; high peaks, the angular slopes, complex geology, variable climate conditions and active tectonic plates make the country very vulnerable to a wide range of natural hazards (UNDP, 2004).



Nepal, the hotspot of disasters

- Nepal ranked **20th** most disaster prone country in the world
- Nepal ranked **11th** most risk country to earthquakes
- Nepal ranked **30th** in terms of flooding
- These are the major recurring disasters in Nepal: **Floods, Earthquake, Landslides, Fire, Drought, GLOF, Avalanches, Hailstone, Windstorm, Thunderbolt, Cloudburst, Epidemics**

Annapurna Region



Seti Flash Flood

Date : 05/05/2012, Local Time: 09 am

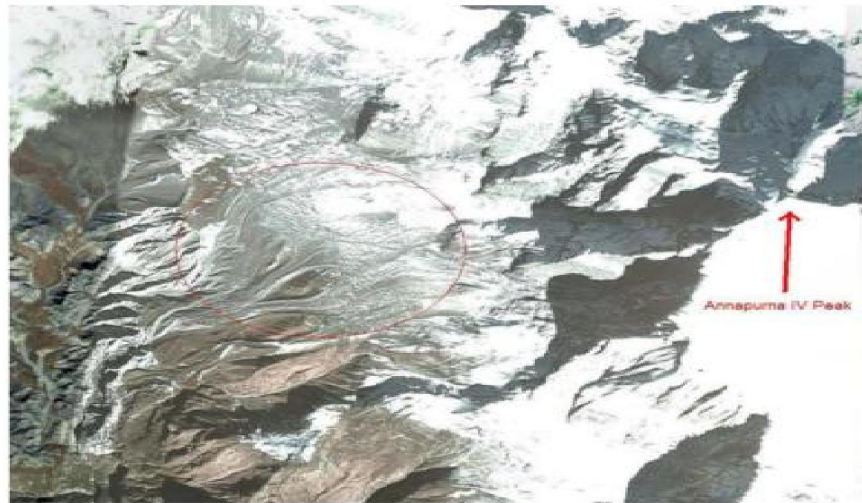


Avalanche at Seti Source



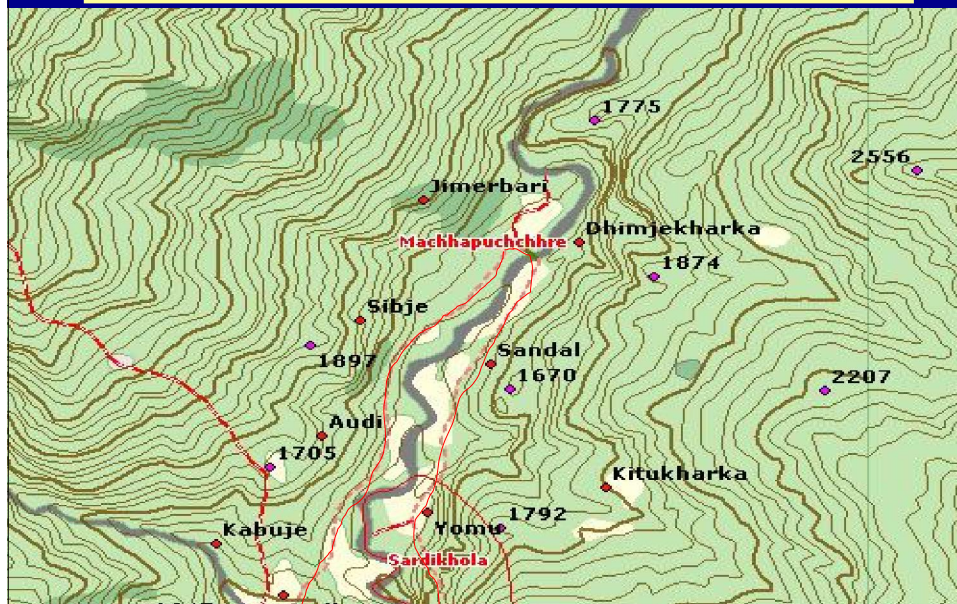
Photo Source:
Praveen Gauchan,
Manager
Avia Club Nepal

Four Glaciers Feeding to Seti



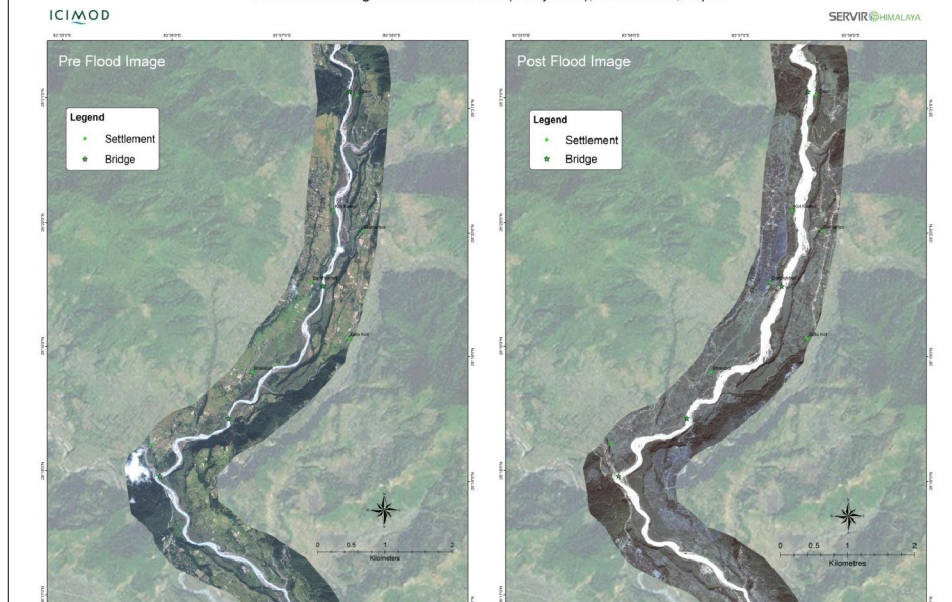
चित्र.८ रातो घेरामा हिउँ नै हिउँ रहेको क्षेत्र र सेति नदी तर्फ झरेका चारवटा हिमनदीहरू

Flood Affected Areas

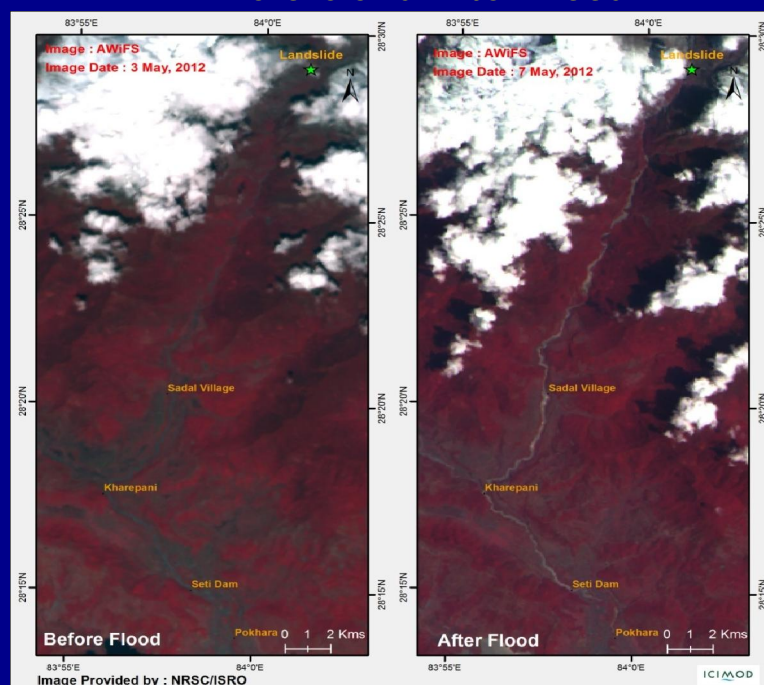


Pre and Post Images of Seti

Pre and Post Images of Seti Flash Flood (5 May 2012), Kaski District, Nepal



Before and After Flood



Disrupted suspension bridge at Kharapani



Before and After Flood



Kharapani Village



Excavation in
Kharapani village

Village without
houses

Losses

i. Human losses

Human				Missing
Death	Injured	Miner Injured	Not Identified	
40	5	27	4	32

ii. Cattles losses: 51

iii. Property losses

Physical				Vehicles				Others
Houses	Shed	Suspension Bridges	Temples	Tractors	Mini Trucks	Truck	Bick	Dinking water pipes
4	16	3	2	7	3	1	1	NRs. 10. 17 million Total: 80.2

Organizational Framework for Response



预览已结束，完整报告链接和二维码如下：

https://www.yunbaogao.cn/report/index/report?reportId=5_7521

