



Technical Standard of PAA

April, 2012

Jay Kim

KTNET

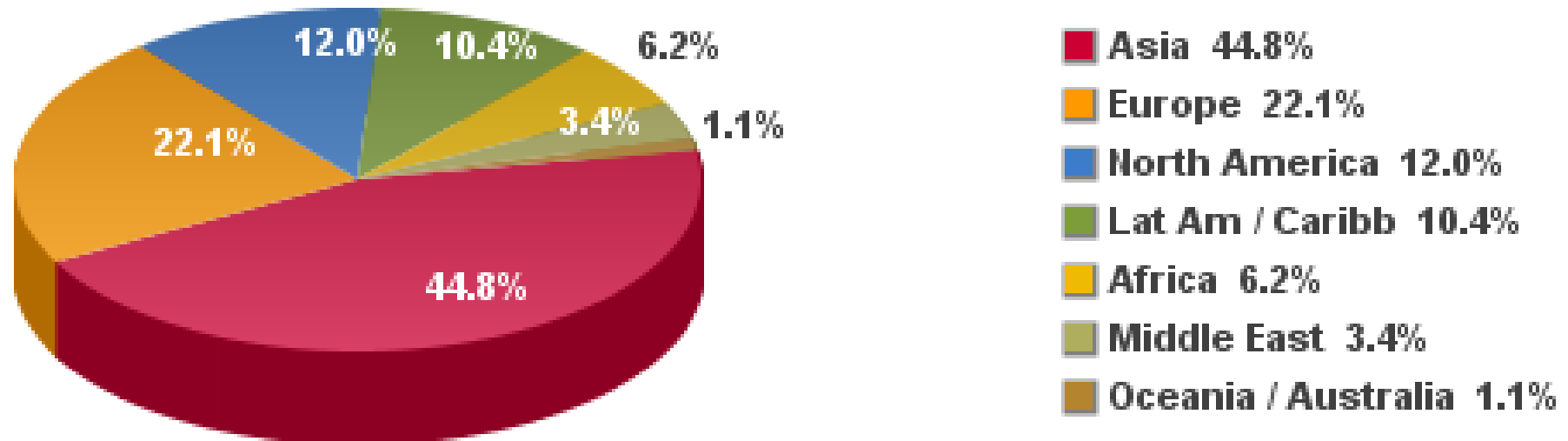
Contents

- 1. Messaging Standard & Communication Protocol**
- 2. Security and on going Services**
- 3. Introduction of KTNET**

1. Messaging Standard & Communication Protocol for PAA

- ❑ PAA Value Position
- ❑ Packaging Specification
- ❑ Single hop transaction Model
- ❑ Multi hop transaction Model
- ❑ Messaging Standard (ebXML)

Internet Users in the World Distribution by World Regions - 2011



Source: Internet World Stats - www.internetworldstats.com/stats.htm

Basis: 2,267,233,742 Internet users on December 31, 2011

Copyright © 2012, Miniwatts Marketing Group

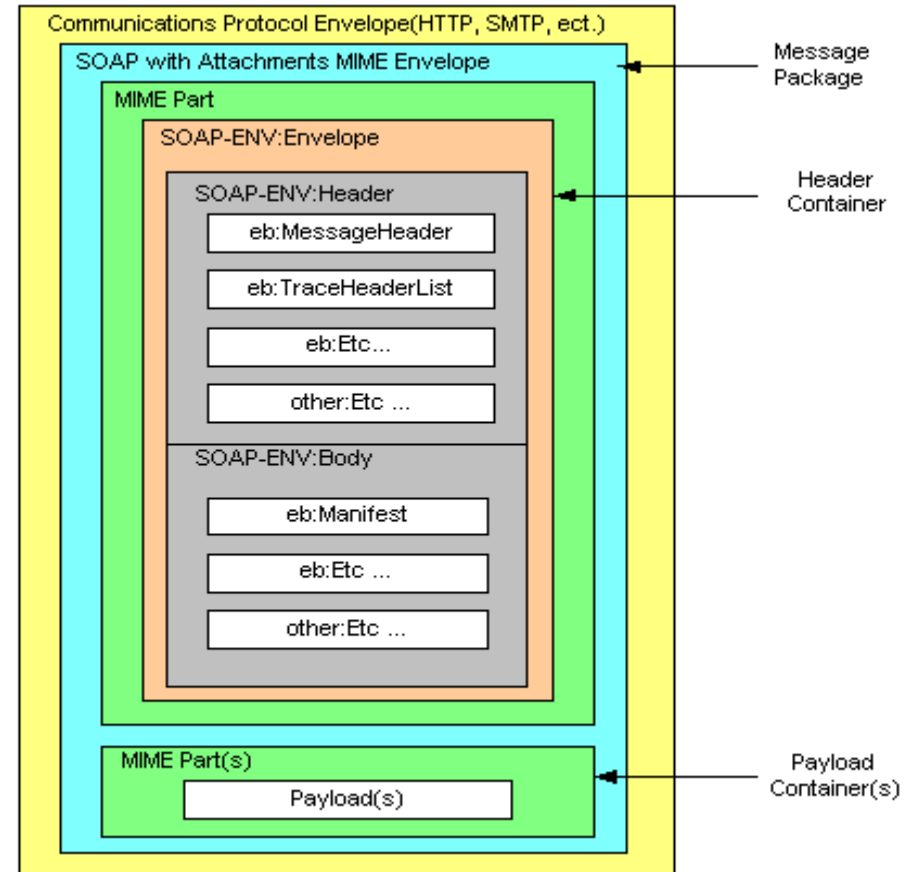
The PAA Value Proposition

- EFFICIENT OPERATIONS – Trade **data can be reused**
- REGULATORY INTEGRATION -**Integrated with Government services**
- ERROR FREE OPERATIONS – **reduction of errors** caused by multiple data re-entry
- SECURITY - **no additional development** works or data mapping
- NEUTRAL RELIABLE PLATFORM – **neutral** , **reliable** and **secure**
- STRONG PAA LEGAL FRAMEWORK



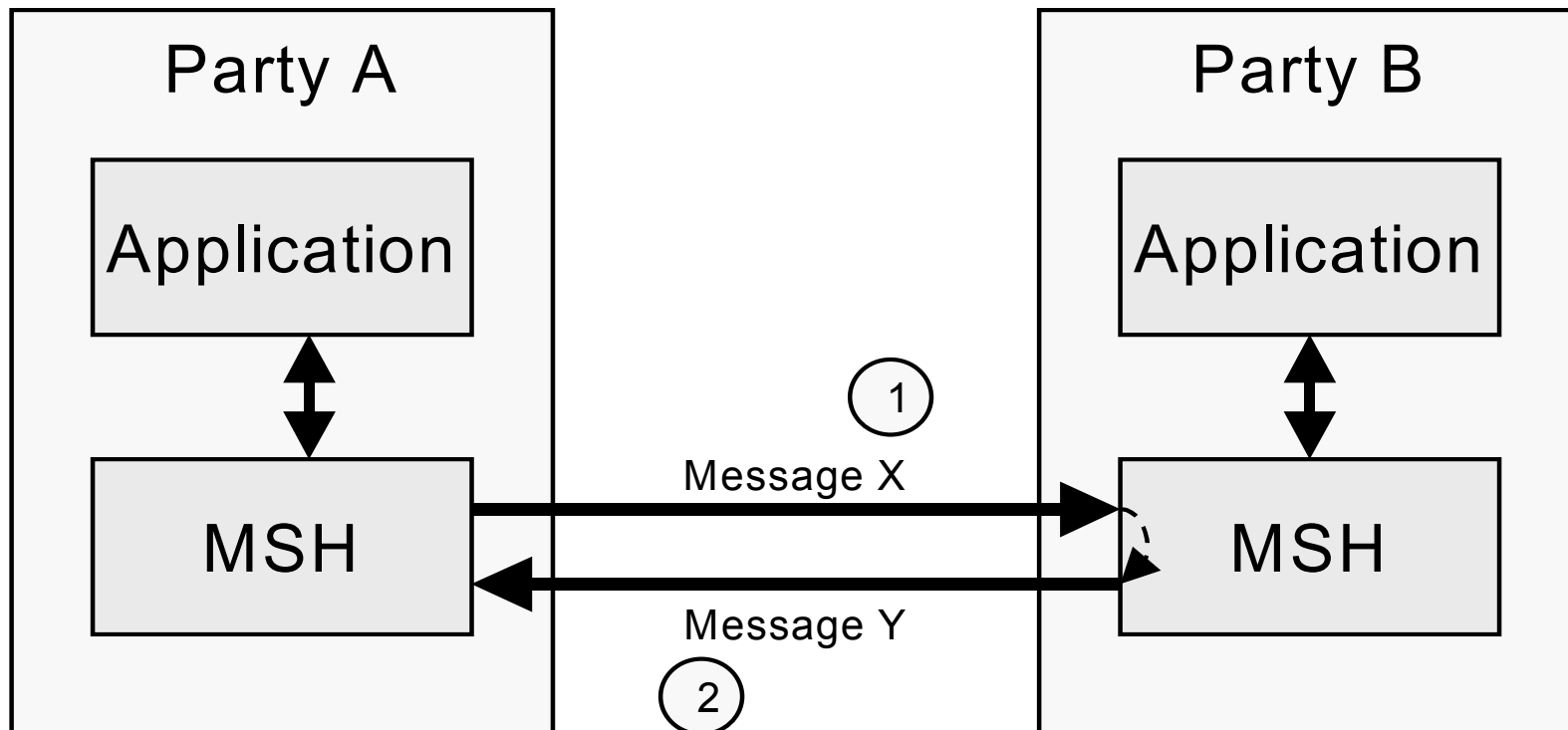
Packaging Specification

- ebXML Message Structure
 - communication protocol independent MIME/Multipart message envelope
 - SOAP Messages with Attachments
- Two logical MIME parts within the *Message Package*
 - A MIME part, referred to as the *Header Container*, containing one SOAP 1.1 compliant message
 - zero or more MIME parts, referred to as *Payload Containers*, containing application level payloads



Single Hop TraceHeader Model

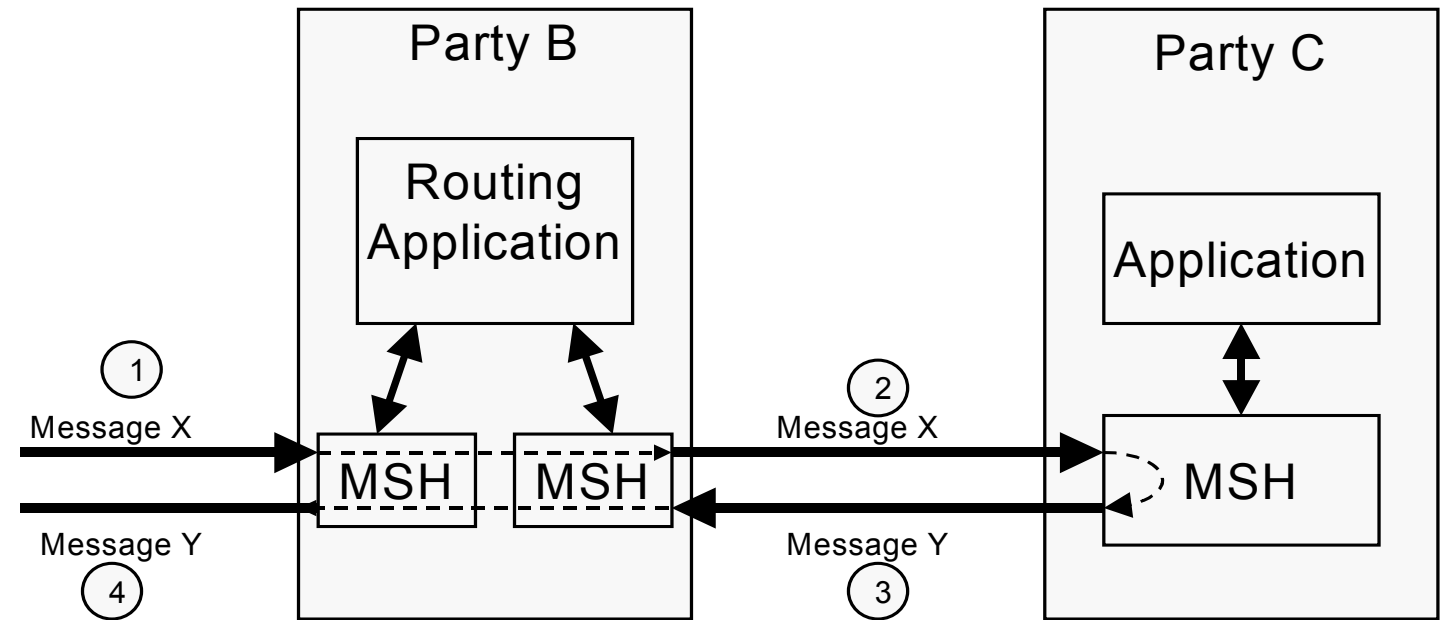
sent directly from one party to another





TraceHeader Model

Messages are not sent directly from one party to another, but sent via an intermediate party, as illustrated by the



Message 1 - Message X From Party A To Party B

Message 2 - Message X From Party B To Party C