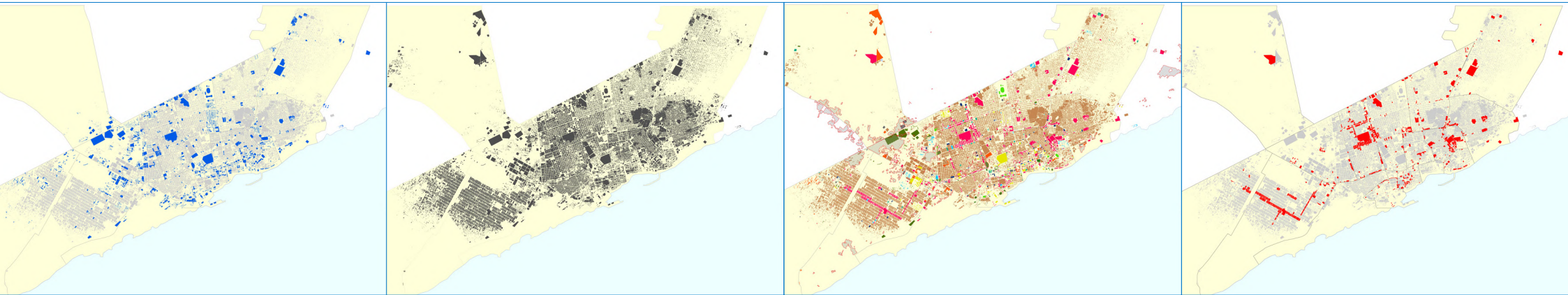


URBAN ANALYSIS OF MOGADISHU

The urban analysis provides general information and helps to develop a basic spatial understanding of the city of Mogadishu, including its main characteristics and composition.



MOGADISHU URBAN CONSULTATION

January 19-20, 2014

Mogadishu

MOGADISHU URBAN ANALYSIS

The designation employed and the presentation of the material in this publication do not imply the expression of any opinion whatsoever on the part of the Secretariat of the United Nations concerning the legal status of any country, territory, city or area, or its authorities, or concerning delimitation of its frontiers or boundaries, or regarding economic system or degree of development. The analysis plans do not necessarily reflect the views of the United Nations Human Settlements Programme (UN-Habitat), the Governing Council of UN-Habitat or its Member States.

This publication is the result of the project 'Support to Regional Benadir Administration's Central Department of Urban Planning' implemented in technical cooperation between the UN-Habitat Somalia Programme and the Mogadishu Department of Urban Planning (DUP). The data contained in the urban analysis was collected during GPS surveys by UN-Habitat Somalia during 2010-2012 and by the Mogadishu Department of Urban Planning (DUP) during 2013.

The spatial analysis provides general information and helps to develop a basic spatial understanding of the city of Mogadishu, including its main characteristics and composition. Data contained on those maps is not warranted to be error free and should not be used for planning purpose. The maps are a basic tool for strategic urban planning and require further detailed sectoral analysis.

This publication was prepared by Pinar Caglin, James Osundwa, Abdishakur Awil Hassan and Anna Sobczak.

Graphics by the UN-Habitat Somalia Programme.

Satellite image provided by GeoEye © 2013 GeoEye. ALL RIGHTS RESERVED.

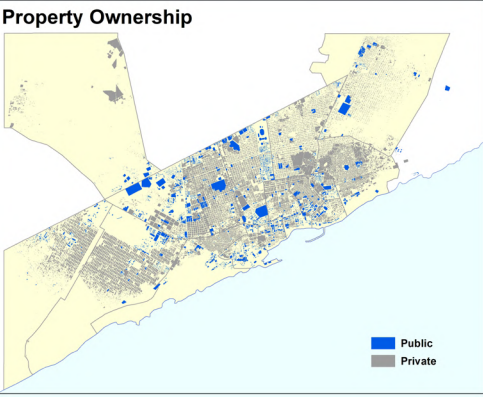
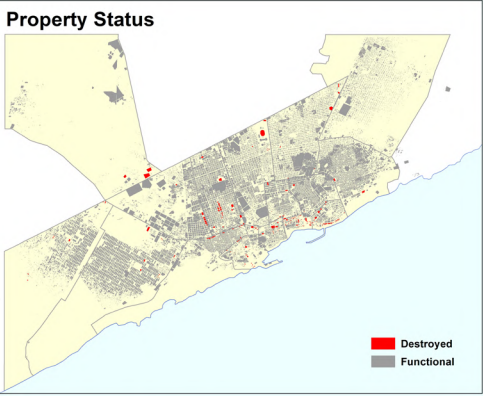
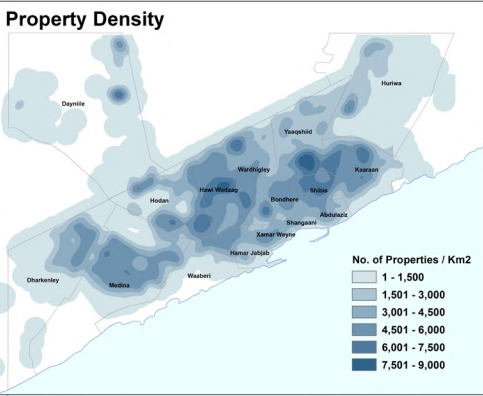
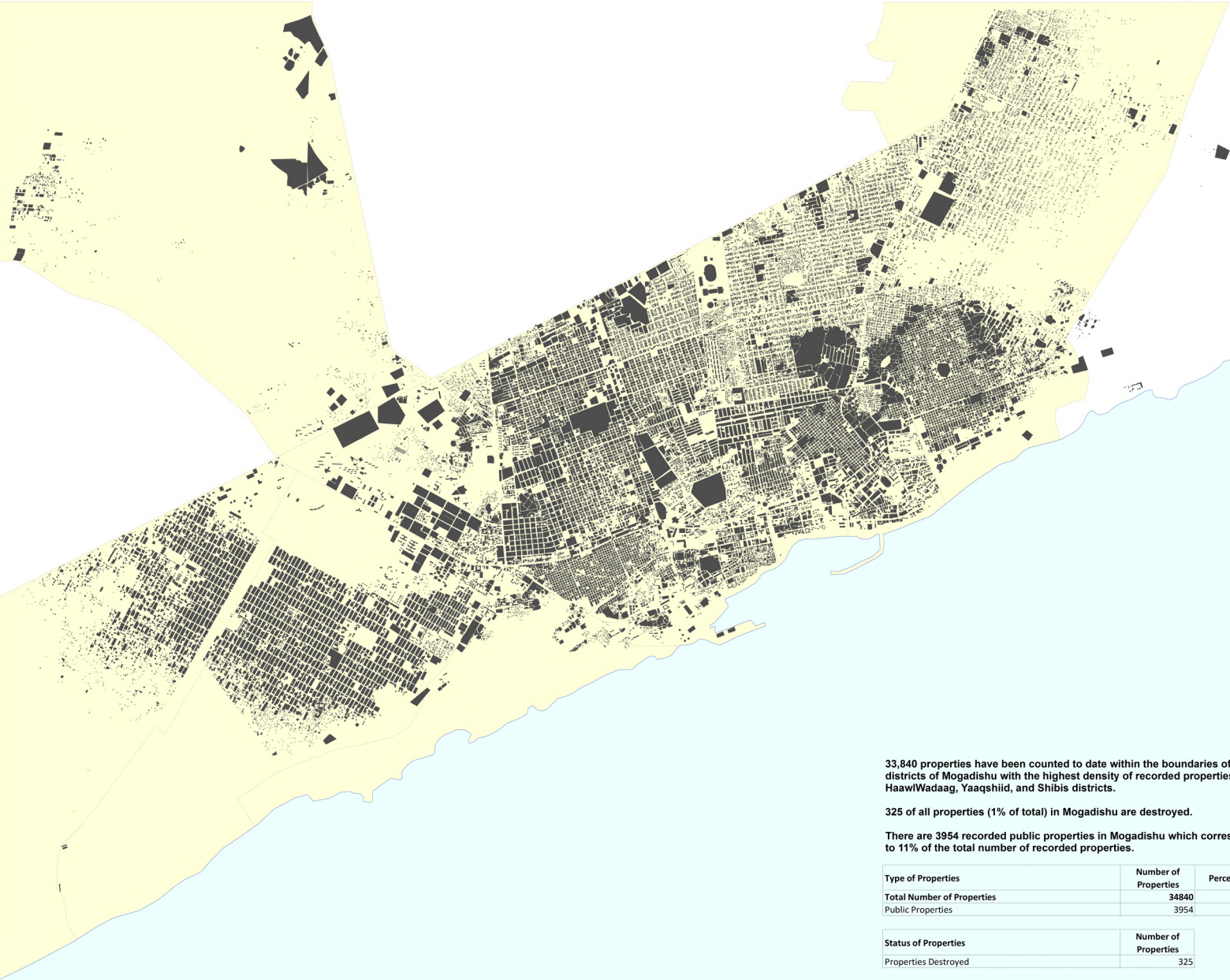
Nations Human Settlements Programme (UN-Habitat)

P.O.Box 30030, GPO 00100, Nairobi, Kenya

Fax: + (254) 20 762 4060

Tel.: + (254) 20 762 5030

e-mail: un-habitat.som@unhabitat.org



33,840 properties have been counted to date within the boundaries of 16 districts of Mogadishu with the highest density of recorded properties in HaawWadaag, Yaaqshiid, and Shibus districts.

325 of all properties (1% of total) in Mogadishu are destroyed.

There are 3954 recorded public properties in Mogadishu which corresponds to 11% of the total number of recorded properties.

Type of Properties	Number of Properties	Percentage
Total Number of Properties	34840	100%
Public Properties	3954	11.3%

Status of Properties	Number of Properties
Properties Destroyed	325

Legend

Properties

Districts

0 0.5 1 2 3 4 Km

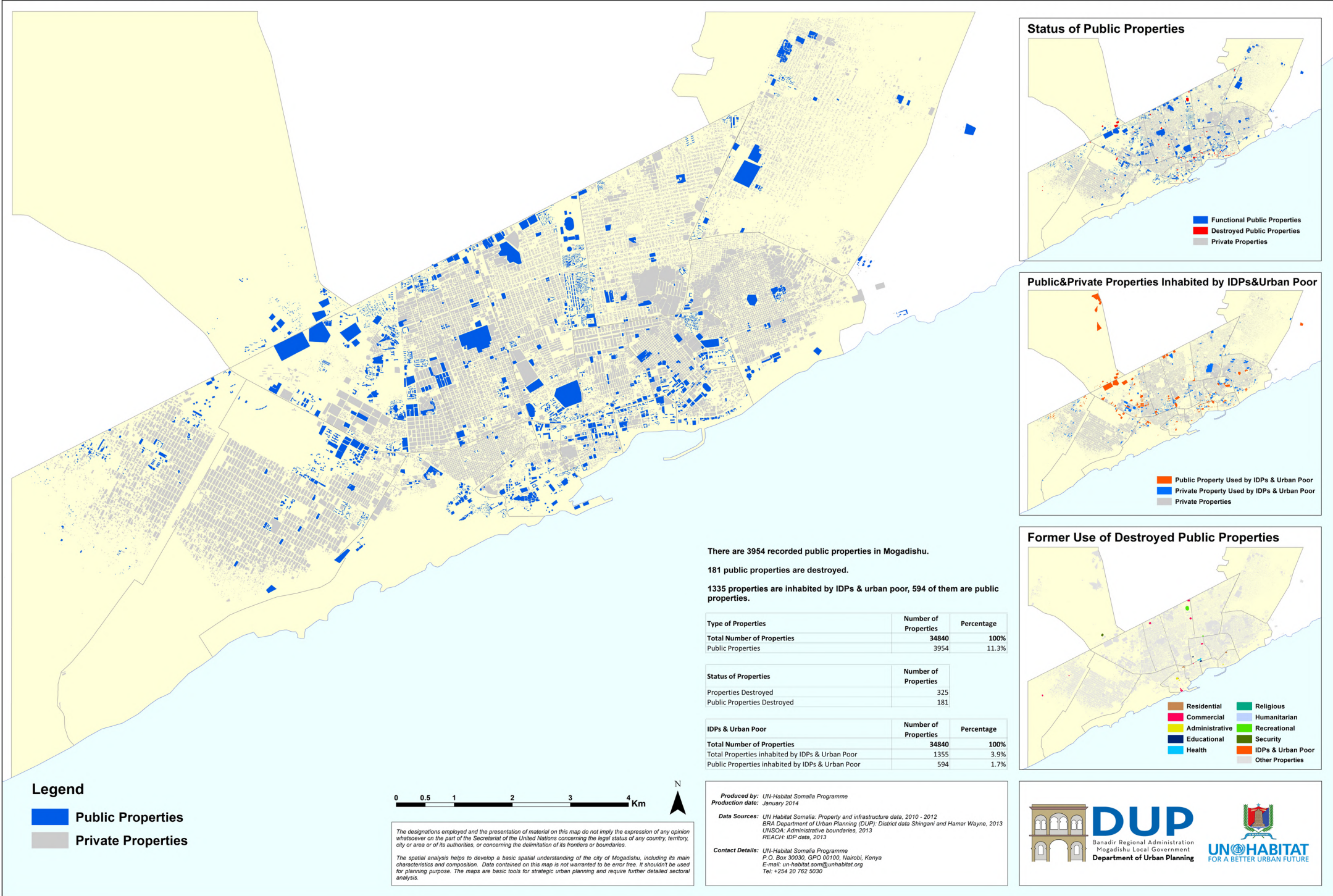
The designations employed and the presentation of material on this map do not imply the expression of any opinion whatsoever on the part of the Secretariat of the United Nations concerning the legal status of any country, territory, city or area or of its authorities, or concerning the delimitation of its frontiers or boundaries.

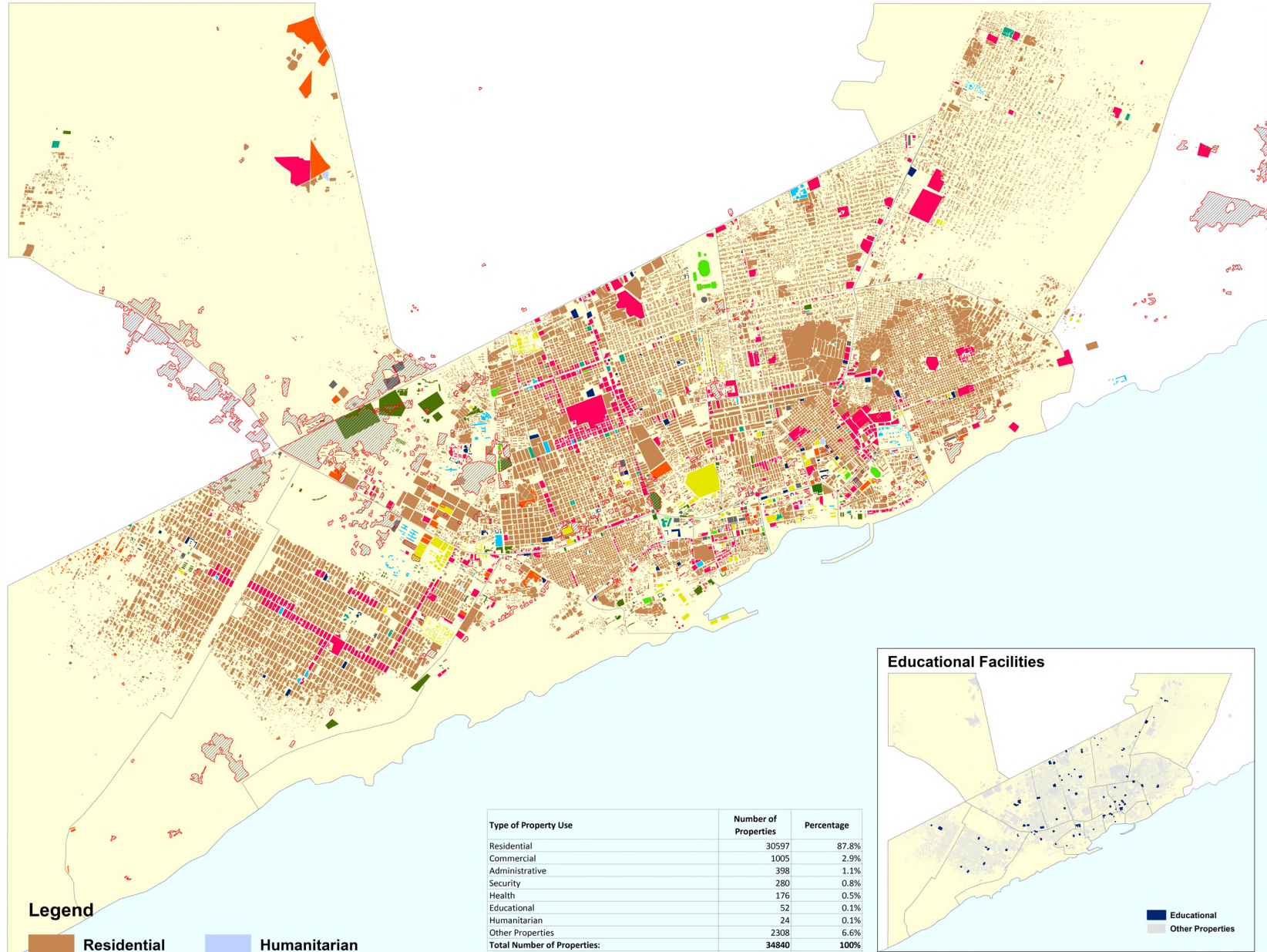
The spatial analysis helps to develop a basic spatial understanding of the city of Mogadishu, including its main characteristics and composition. Data contained on this map is not warranted to be error free. It shouldn't be used for planning purpose. The maps are basic tools for strategic urban planning and require further detailed sectoral analysis.

Produced by: UN-Habitat Somalia Programme
Production date: January 2014

Data Sources: UN-Habitat Somalia: Property and infrastructure data, 2010 - 2012
BRA Department of Urban Planning (DUP): District data Shingani and Hamar Wayne, 2013
UNSOA: Administrative boundaries, 2013
REACH: IDP data, 2013

Contact Details: UN-Habitat Somalia Programme
P.O. Box 30030, GPO 00100, Nairobi, Kenya
E-mail: un-habitat.som@unhabitat.org
Tel: +254 20 762 5030



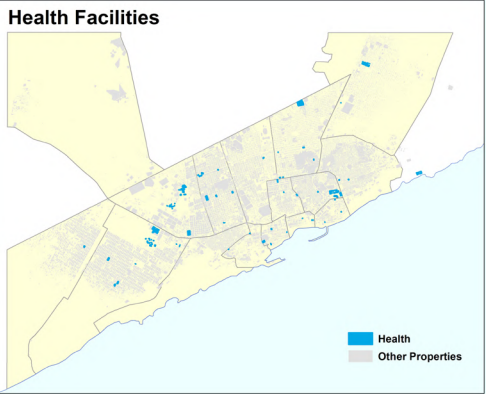
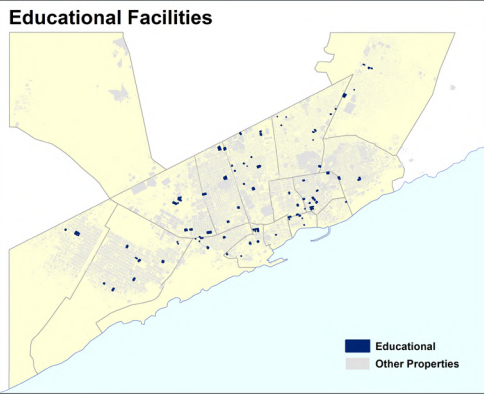
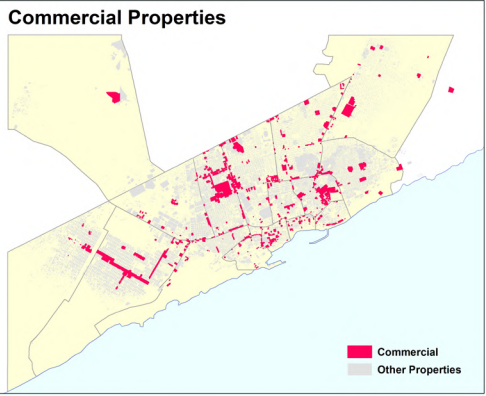
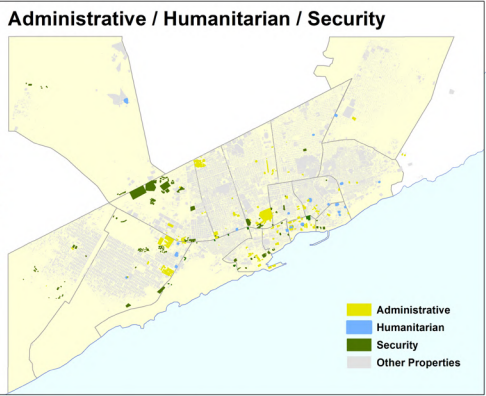


Type of Property Use	Number of Properties	Percentage
Residential	30597	87.8%
Commercial	1005	2.9%
Administrative	398	1.1%
Security	280	0.8%
Health	176	0.5%
Educational	52	0.1%
Humanitarian	24	0.1%
Other Properties	2308	6.6%
Total Number of Properties:	34840	100%

0 0.5 1 2 3 4 Km

The designations employed and the presentation of material on this map do not imply the expression of any opinion whatsoever on the part of the Secretariat of the United Nations concerning the legal status of any country, territory, city or area or of its authorities, or concerning the delimitation of its frontiers or boundaries.

The spatial analysis helps to develop a basic spatial understanding of the city of Mogadishu, including its main characteristics and composition. Data contained on this map is not warranted to be error free. It shouldn't be used for planning purpose. The maps are basic tools for strategic urban planning and require further detailed sectoral analysis.



- Legend**
- Residential
 - Commercial
 - Administrative
 - Educational
 - Health
 - Religious
 - Humanitarian
 - Recreational
 - Security
 - IDPs & Urban Poor
 - Informally Inhabited (Former Open Spaces)
 - IDPs&Urban Poor Settlements

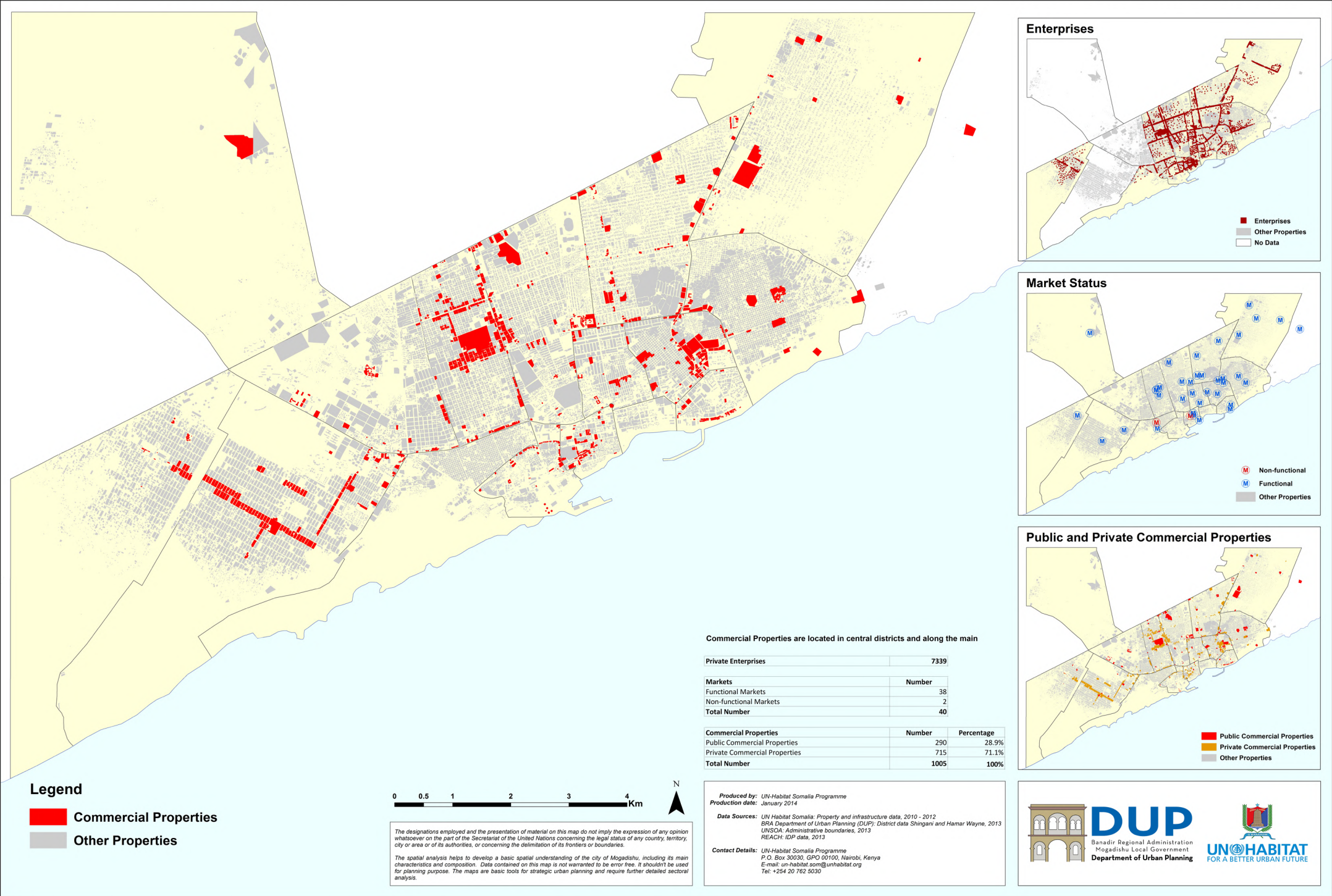
Produced by: UN-Habitat Somalia Programme
Production date: January 2014

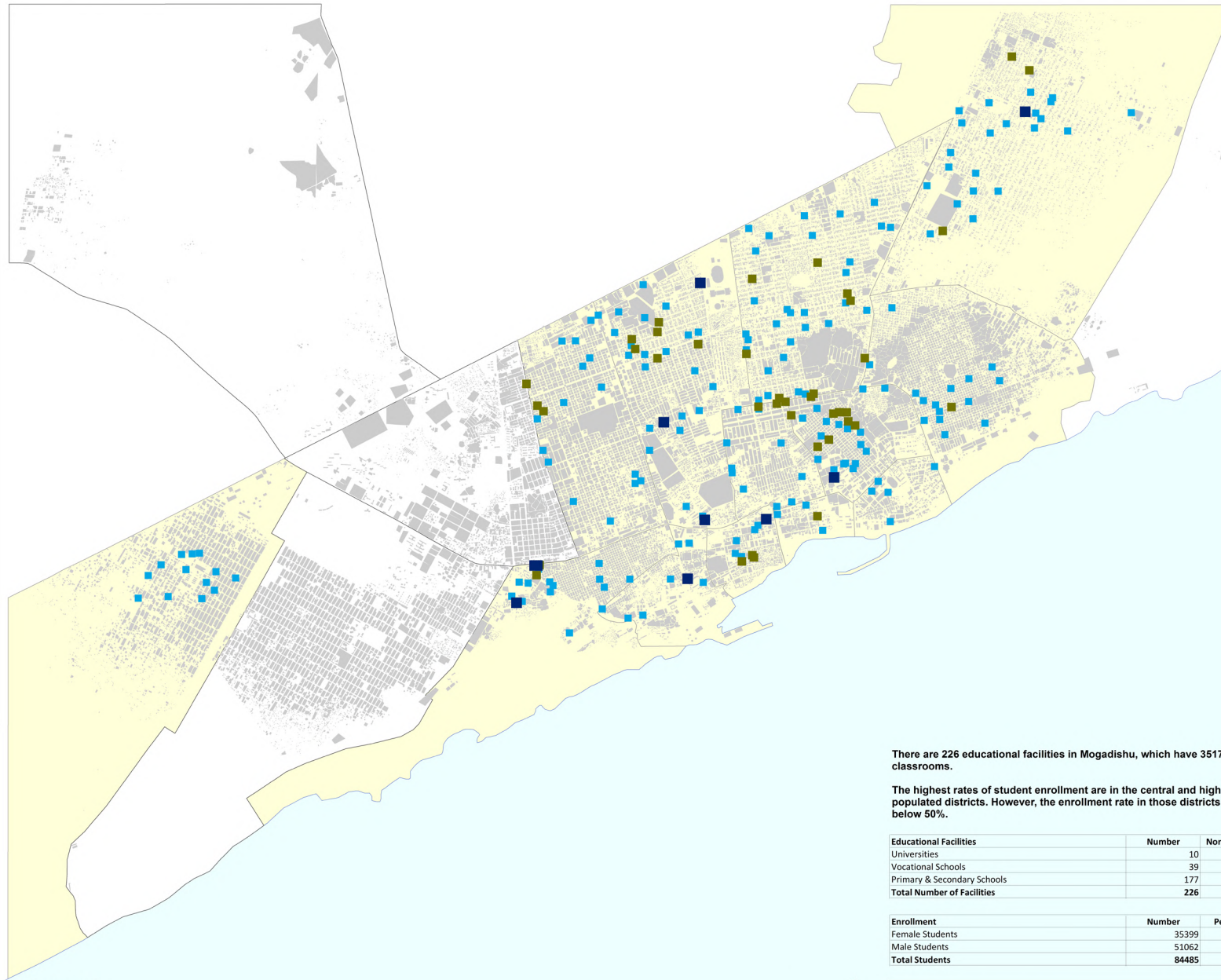
Data Sources: UN-Habitat Somalia: Property and infrastructure data, 2010 - 2012
BRA Department of Urban Planning (DUP): District data Shingani and Hamar Wayne, 2013
UNSOA: Administrative boundaries, 2013
REACH: IDP data, 2013

Contact Details: UN-Habitat Somalia Programme
P.O. Box 30030, GPO 00100, Nairobi, Kenya
E-mail: un-habitat.som@unhabitat.org
Tel: +254 20 762 5030

DUP
Banadir Regional Administration
Mogadishu Local Government
Department of Urban Planning

UN-HABITAT
FOR A BETTER URBAN FUTURE





Legend

- University
- Vocational School
- Primary / Secondary School
- No Data

0 0.5 1 2 3 4 Km

The designations employed and the presentation of material on this map do not imply the expression of any opinion whatsoever on the part of the Secretariat of the United Nations concerning the legal status of any country, territory, city or area or of its authorities, or concerning the delimitation of its frontiers or boundaries.

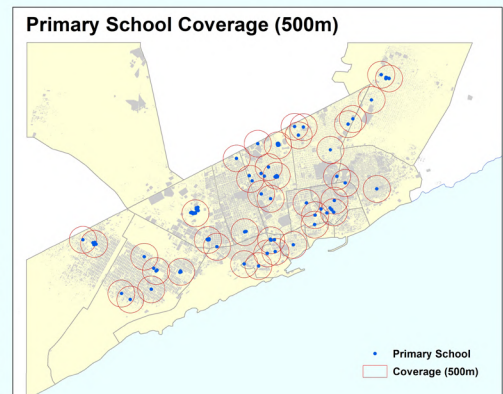
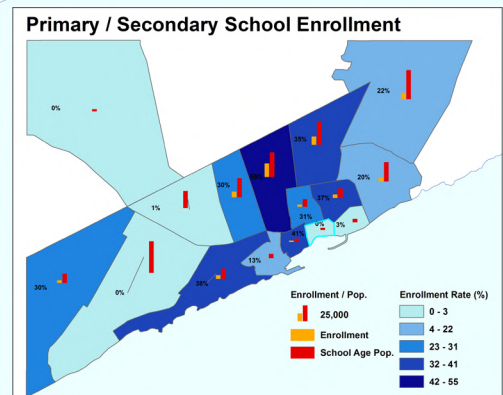
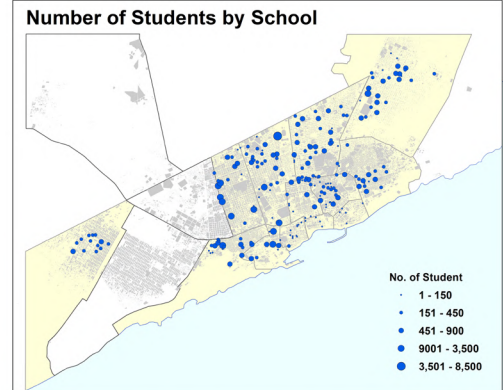
The spatial analysis helps to develop a basic spatial understanding of the city of Mogadishu, including its main characteristics and composition. Data contained on this map is not warranted to be error free. It shouldn't be used for planning purpose. The maps are basic tools for strategic urban planning and require further detailed sectoral analysis.

There are 226 educational facilities in Mogadishu, which have 3517 classrooms.

The highest rates of student enrollment are in the central and highest populated districts. However, the enrollment rate in those districts is still below 50%.

Educational Facilities	Number	Non-functional
Universities	10	4
Vocational Schools	39	No data
Primary & Secondary Schools	177	No data
Total Number of Facilities	226	

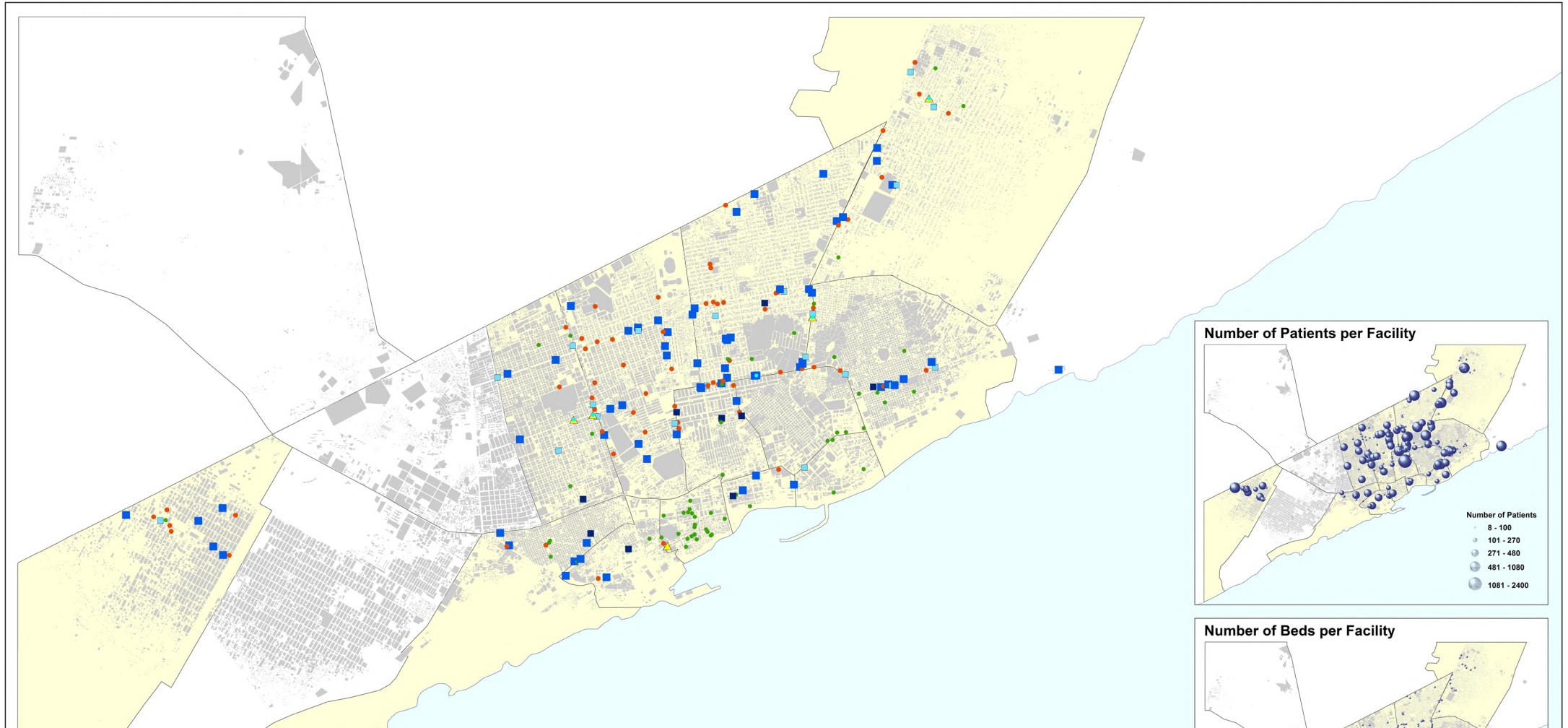
Enrollment	Number	Percentage
Female Students	35399	41.9%
Male Students	51062	60.4%
Total Students	84485	100%



Produced by: UN-Habitat Somalia Programme
Production date: January 2014

Data Sources: UN-Habitat Somalia: Property and infrastructure data, 2010 - 2012
BRA Department of Urban Planning (DUP): District data Shingeni and Hamar Wayne, 2013
UNSOA: Administrative boundaries, 2013
REACH: IDP data, 2013

Contact Details: UN-Habitat Somalia Programme
P.O. Box 30030, GPO 00100, Nairobi, Kenya
E-mail: un-habitat.som@unhabitat.org
Tel: +254 20 762 5030



预览已结束，完整报告链接和二维码如下：

https://www.yunbaogao.cn/report/index/report?reportId=5_18508

