

## Governance/Management Structure

The CRPP's day-to-day operations will be administered from the Programme's headquarters in Barcelona, Spain and housed within a new international Urban Resilience Institute (URI). Supported by UN-Habitat, the City of Barcelona and other partners, URI will serve as both the operational centre for the delivery of the CRPP, as well as a global hub for innovation, learning, policy guidance, and dissemination of best practice and information on resilience to cities around the world. URI will bring together a broad range of actors, including from private sector, academia, humanitarian and development agencies, municipal leaders, and other experts, to facilitate a constant exchange and evolution of knowledge around resilience in urban settlements.

The CRPP is structured under a Steering Committee comprised of key financial supporters including Marsh, a global leader in insurance brokerage and risk management. An Advisory Board comprised of other partner institutions supporting the aims of the programme include International Federation of the Red Cross (IFRC), World Vision International, and others.

## CRPP Aims

- > **Equip** urban leaders, planners and developers with tools and information they need to calibrate and measure their resilience in order to make informed governance and investment decisions;
- > **Mobilize** transformational, sustainable improvements to the physical, spatial, and functional elements of cities to safeguard against multiple hazards (both natural and man-made) and ensure continuity of urban processes and services;
- > **Empower** cities to 'do more with what they have' and catalyze new finance opportunities by promoting resilience as a criterion for investment;
- > **Improve** accountability in local level policy and budgetary decisions;
- > **Provide** a common, global understanding of urban resilience through the development of indices and standards.

*"Even with **limited resources**, we must make **investments in smart**, effective protections for our city, modifying and **expanding strategies as we learn more about the threats we face and piloting projects that can be scaled up over time.**"*

**Former New York City Mayor  
Michael Bloomberg, A Stronger,  
More Resilient New York**

*The rationale for the development of the CRPP was the recognition that the projected growth of urban settlements over the next 30 years will demand **new tools and approaches that strengthen the capacities of local administrations and citizens** to better protect human, economic and natural assets.*



This information brochure summarizes key aspects of UN-Habitat's new programme producing measurable indices for urban government resilience building efforts.

For enquiries on the City Resilience Profiling Programme please contact:  
Dan Lewis, Chief, Urban Risk Reduction Unit  
dan.lewis@unhabitat.org

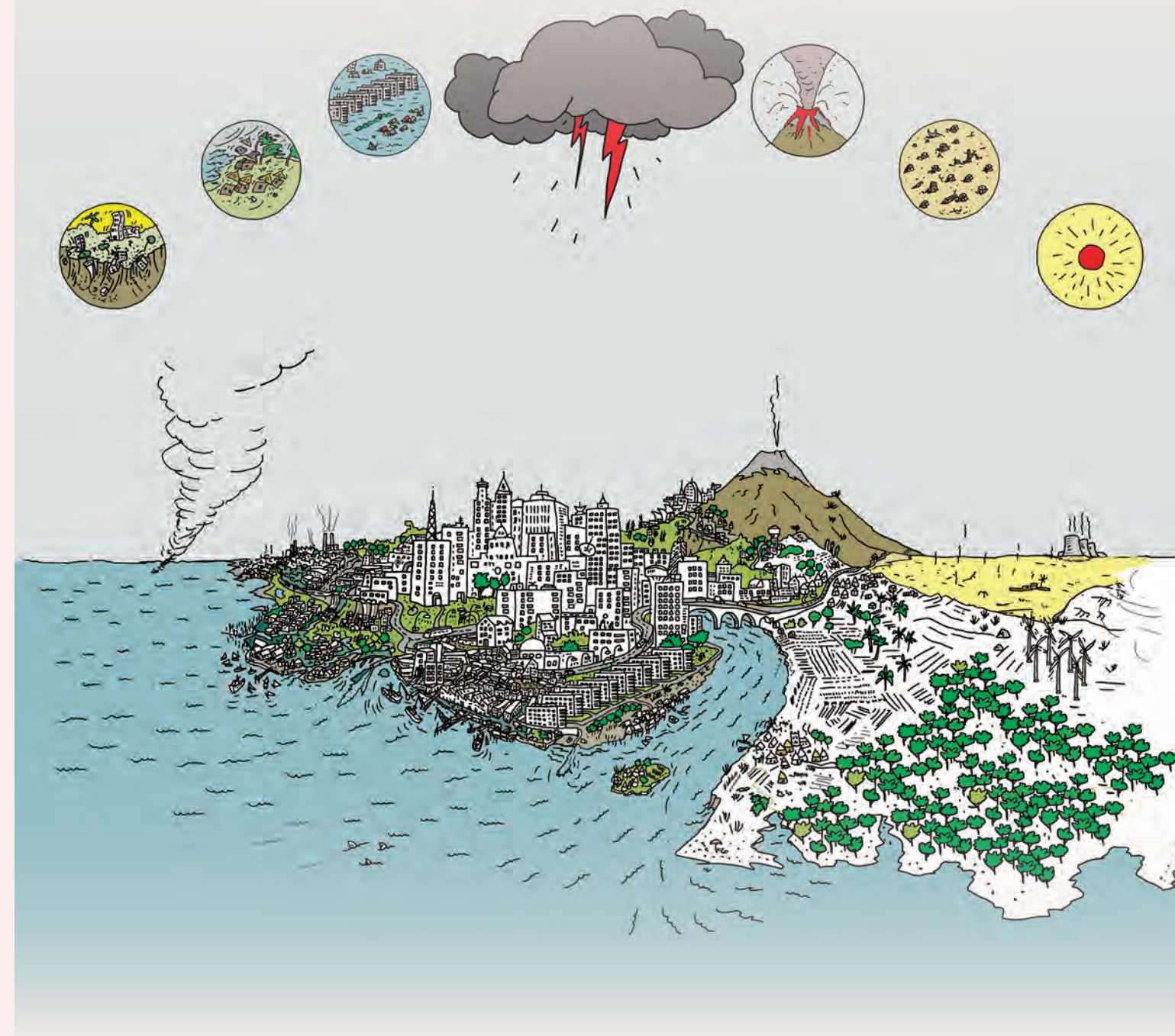
UNITED NATIONS HUMAN SETTLEMENTS PROGRAMME  
P.O. Box 30030, Nairobi 00100, Kenya;  
Tel: +254-20-7623120;  
Fax: +254-20-76234266/7 (Central office)  
infohabitat@unhabitat.org

CRPP HEADQUARTERS  
Sant Pau Recinte Modernista  
Sant Leopold pavilion  
C. Sant Antoni Maria Claret, 169  
08025 Barcelona, Spain

**UN HABITAT**  
www.unhabitat.org

# CITY RESILIENCE PROFILING PROGRAMME

Volume 3



**UN HABITAT**  
FOR A BETTER URBAN FUTURE



**UNISDR**  
The United Nations Office for Disaster Risk Reduction

**MARSH**

Ajuntament de  
Barcelona



## UN-Habitat and Resilience

The primary aim of UN-Habitat is the sustainable development of cities, towns, and other human settlements. One key pillar of this aim is ensuring that cities are able to withstand and recover quickly from catastrophic events.

The CRPP is a niche clearly within UN-Habitat's mandate and expertise within the humanitarian and development oriented communities of practice addressing urban risk reduction and

resilience. Our comparative advantage is strengthened through key partnerships founded on integrated urban approaches, with strategic partners, the ISDR Secretariat, Red Cross/Red Crescent Movement, Habitat Partner University Initiative institutions and private sector including representatives from the insurance, IT, energy and natural resource industries, as well as city networks including UCLG and Metropolis.



**'Urban Resilience'** refers to the ability of any urban system, to withstand and recover quickly from any plausible hazard.

## Programme Overview

### OVERALL GOAL and EXPECTED ACCOMPLISHMENTS:

The **overall goal** of the CRPP is that "cities are safer places to live and work as urban managers are able to implement strategic development planning and programmes that target specific indicators of resilience to multi-hazard catastrophic events". The Programme will deliver the following five unique tangible **accomplishments** within its 4-5 year implementation timeframe:

#### 1 Research on Operational Framework: An adaptable urban systems model suitable for all human settlements.

The urban systems model will be adaptable to any settlement, cover all aspects of urban systems (physical, organizational, spatial and functional); and include attributes for multi-hazards, risk, vulnerability and preparedness.

#### 2 Indexing and Profiling: A set of indicators, standards, and profiles to support cities for calibrating urban systems ability to withstand and recover from crisis.

The project will produce a set of profiles and indices allowing calibration of resilience, based on a factored evaluation of: all hazards; risk; vulnerabilities; and, preparedness leading to urban resilience scores that can be used to base future planning and development trajectories in urban areas.

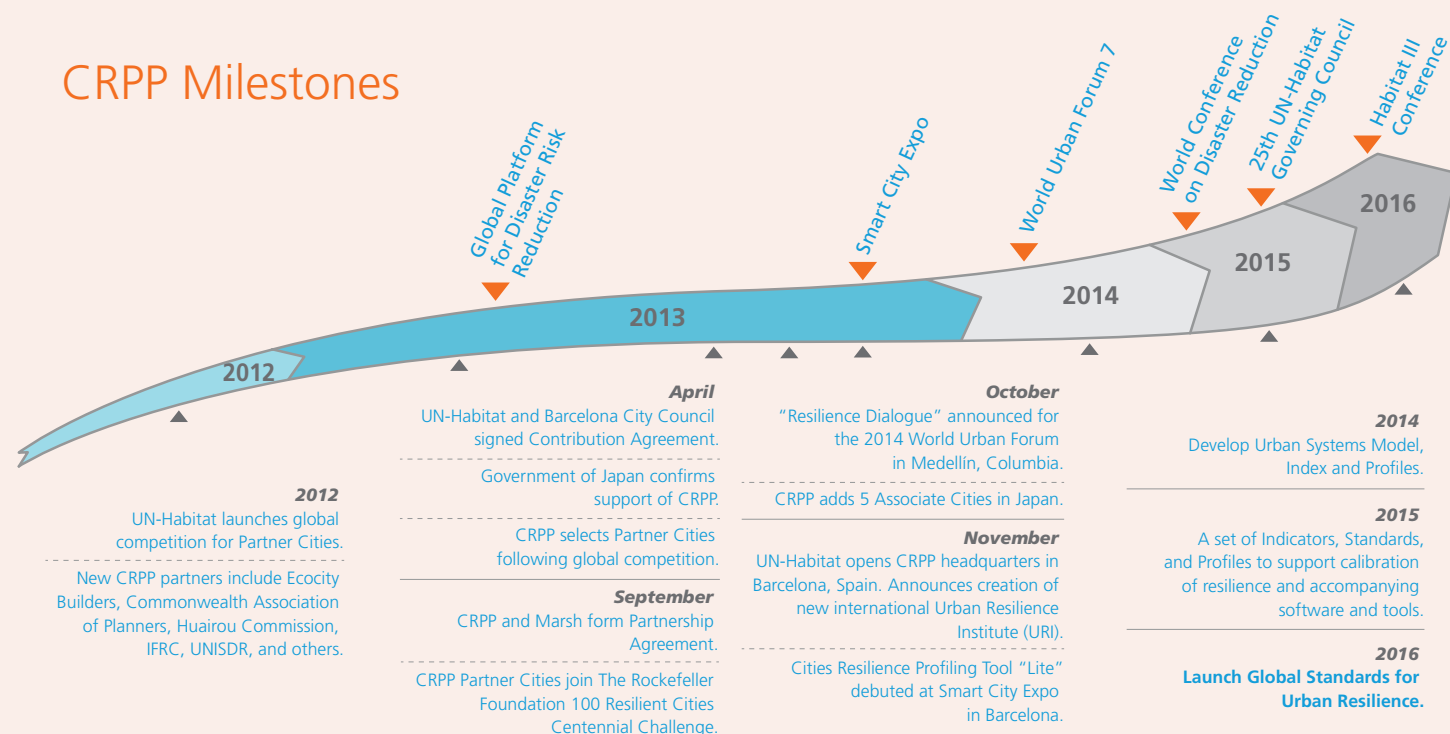
#### 3 Tools/Software Development: Software systems that produce city resilience profiles.

In order to analyze, quantify and determine outcomes from a limited number of key indices, and a very high number of data inputs, appropriate, accessible and reliable computer software will be developed, and provided on request for use by urban managers.

#### 4 Normative Guidance: Global standards set for urban resilience.

Most current development standards including building codes and regulations, planning standards, infrastructure and development regulations attempt to balance risk reduction with cost. All risk management tools focus on specific hazard-risk calculations. The programme will produce an integrated urban systems based set of planning and development standards specifically measuring settlements-based resilience.

## CRPP Milestones



## UN-Habitat Announced 10 Partner Cities for the City Resilience Profiling Programme

The United Nations Human Settlements Programme (UN-Habitat) announced on 18 April, 2013, the 10 partner cities for its City Resilience Profiling Programme (CRPP).

The Executive Director, Dr. Joan Clos, welcomes the partnership with all ten city governments, and looks forward to achieving our mutual goals of: reducing loss of lives and assets, protecting development gains, and ensuring continuity of public and private services through any potential crises impacting cities throughout the world. UN-Habitat highly appreciates the speech made at the Governing Council of UN-Habitat by Mr. Yosuke Wakabayashi, Deputy Director-General, National and Regional Policy Bureau, Ministry of Land, Infrastructure, Transport and Tourism of the Government of Japan "to support this Programme by sharing its rich experience, knowledge and technologies in disaster risk reduction field". UN-Habitat encourages support for the balance of the programme funding from other donor partners.

## Partner City Profiles

**Balangoda (Sri Lanka):** Located in southern Sri Lanka, the city has a population of 23,220, and is mainly prone to landslides and floods due to recurrent cyclones. The city recently established a unit within its city council for disaster risk reduction and climate change adaptation.

**Barcelona (Spain):** Barcelona is one of the major cities in Europe with a strong commitment to building urban resilience with its Urban Resilience Board for Infrastructure and Services Supply to counter the impact of various types of crises and to strengthen infrastructures and services supply capacities.

**Beirut (Lebanon):** Beirut is the capital and largest city of Lebanon. The estimates of Beirut's population range from as low as 938,940 to less than two million. It is a coastal city and prone to earthquakes and associated tsunamis. The City is highly committed to building disaster risk management with the collaboration of the National Government. Currently Beirut city is preparing its disaster response plan and assessing the impact of its major potential disaster to enhance further its resilience.

**Dagupan (Philippines):** A city with over 163,000 citizens with a multi-hazard profile of earthquakes, floods, cyclones, tsunami, among others. The city has established a full-time unit in charge of disaster preparedness, response, recovery and mitigation.

**Dar es Salaam (Tanzania):** One of the largest cities in Africa with roughly 5 million inhabitants, prone to recurrent floods. The city is now developing a Disaster Risk Resilient Strategic Plan to address all potential hazards.

**Lokoja (Nigeria):** A rapidly urbanizing city with a population of over 500,000, experiencing a huge flood in 2012, and several residential areas in vulnerable, low-lying neighborhoods in the city.

**Portmore (Jamaica):** A city with approximately 250,000 inhabitants, prone to hurricanes, sea surge, floods and earthquakes. The city has developed a Disaster Preparedness Programme in 2004 to cope with the recurrent hurricanes in the region.

**Concepción/Talcahuano (Chile):** Concepción and Talcahuano are part of the greater metropolitan area of the Bio Bio Region, located in the south central coast of Chile. They were both struck in 2010 by an 8.8 catastrophic earthquake and subsequent tsunami. The "Talcahuano 2020" plan encompasses its views and strategies on reconstruction.

**Tehran (Iran):** Tehran has experienced 4 major earthquakes of over Magnitude 5 since the 1960s and established the Tehran Disaster Mitigation and Management Organization, winning the Sasakawa International Award for Disaster Reduction.

**Wellington (New Zealand):** Surrounded by sea and intersected by two major tectonic plates, Wellington is exposed to a wide range of hazards – from earthquakes to floods, to landslides and storm surges. The city has been conducting extensive research and education programmes and a significant expenditure has been committed for mitigating disaster impacts.



## UN-Habitat and Barcelona City Council Signed Contribution Agreement to Implement City Resilience Profiling Programme

On 2 April, 2013, Dr. Joan Clos, the Executive Director of the United Nations Human Settlements Programme (UN-Habitat), and the Hon. Xavier Trias i Vidal Llobatera, Mayor of the City of Barcelona, signed a Contribution Agreement initiating the City Resilience Profiling Programme and broadening the engagement between UN-Habitat and the City of Barcelona. The Contribution Agreement ensures closer ties between UN-Habitat and the City of Barcelona as the host of the UN-Habitat office of the City Resilience Profiling Programme, to be located in one of the Sant Pau's Modernista buildings. The significant achievements in building resilience to natural disasters by the City of Barcelona, provides an example to other cities, and through the UN-Habitat programme, access to its technical expertise and knowledge on urban resilience.



The Mayor, Xavier Trias, highlighted Barcelona City Council's keenness to work together with international organisations and insisted on the city's having to open up to the world. The Executive Director of UN-Habitat, Dr. Joan Clos, mentioned that "I am pleased to see the growing cooperation between my Agency, and the City of Barcelona, and appreciate the investment by the Honorable Mayor in support of the implementation of this critical globally significant programme on urban resilience." He further added that "we at the United Nations have embarked on this City Resilience Profiling Programme". The Programme is a means to ensure that the cities become resilient. Dr. Clos highly appreciated Barcelona's experience in this regard, citing as an example the drainage network and rainwater deposits.

CRPP Partner Cities are located in both developed and developing countries, with populations ranging from 23,000 to 11 million, and face varying types and degrees of risk, from natural hazards to political instability, and, often, multiple risks simultaneously.

# 我们的产品



## 大数据平台

国内宏观经济数据库

国际经济合作数据库

行业分析数据库

## 条约法规平台

国际条约数据库

国外法规数据库

## 即时信息平台

新闻媒体即时分析

社交媒体即时分析

预览已结束，完整报告链接和二维码如

[https://www.yunbaogao.cn/report/index/report?reportId=5\\_187](https://www.yunbaogao.cn/report/index/report?reportId=5_187)