

KEY FIGURES

 **2,200,357**

INTERNALLY DISPLACED PERSONS (IDPs)

in North-East, 93% due to insurgency, 6% communal clashes and 1% natural disaster. 2,012,155 in Borno, Adamawa and Yobe states.
 Source: DTM - Round 39, Dec 2021.

 **983,701**

INTERNALLY DISPLACED PERSONS (IDPs)

IDPs, 531,278 are in North-West while 452,423 are in North-Central
 Source: DTM - Round 8 for Northwest and Northcentral, Dec. 2021.

 **1,943,445**

RETURNEES

Cumulative since 2015, 156,778 or 8% are former refugees who returned spontaneously with some passing through IDP situation.
 Source: DTM - Round 39, Dec 2021. Since beginning of 2022, UNHCR has registered 6,949 spontaneous refugee returns. In addition 3,880 refugees returned through voluntary repatriation from Cameroon since the beginning of 2021.

 **328,005**

NIGERIAN REFUGEES REGISTERED IN CAMEROON, CHAD, AND NIGER

Source: UNHCR Dec 2021.

 **82,200**

REFUGEES AND ASYLUM-SEEKERS REGISTERED IN NIGERIA

Source: UNHCR Feb 2022.

SITUATION OVERVIEW

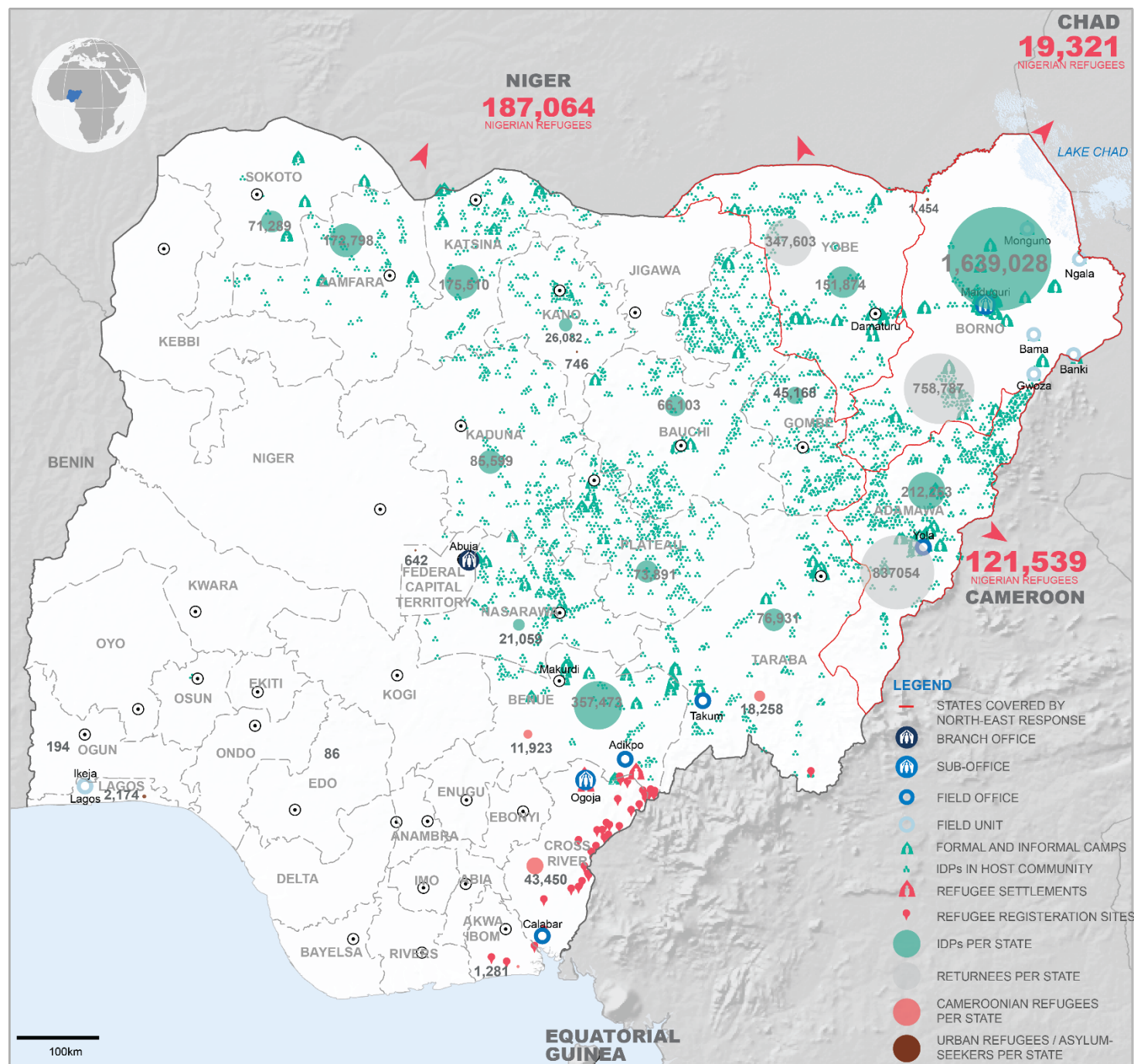
The situation in the North-East remains largely volatile with attacks in several Local Government Areas (LGAs) in Borno, Yobe and Adamawa (BAY) States continuing to cause displacement and casualties among civilians, IDPs and returnees.

In addition, Cameroonian refugees affected by the crisis between the government and activists calling for secession of the anglophone region are seeking refuge in Nigeria. Their arrival has since presented a new dimension to the already complex humanitarian situation.

DISCLAIMER: The boundaries and names shown and the designations used on this map do not imply official endorsement or acceptance by the United Nations.

PUBLISHED: March 2022

SOURCES: UNHCR, IOM DTM, HDX **FEEDBACK:** nigabim@unhcr.org **WEBSITE:** www.unhcr.org/ng/



我们的产品



大数据平台

国内宏观经济数据库

国际经济合作数据库

行业分析数据库

条约法规平台

国际条约数据库

国外法规数据库

即时信息平台

新闻媒体即时分析

社交媒体即时分析

云报告平台

数据智慧平台

助力智慧 助力企业决策 助力城市智能决策

预览已结束，完整报告链接和二维码如下：

https://www.yunbaogao.cn/report/index/report?reportId=5_16330

