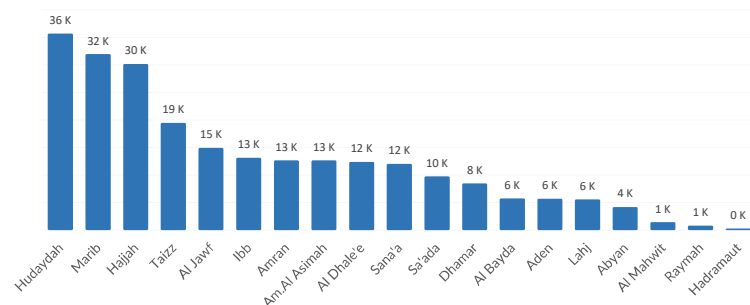
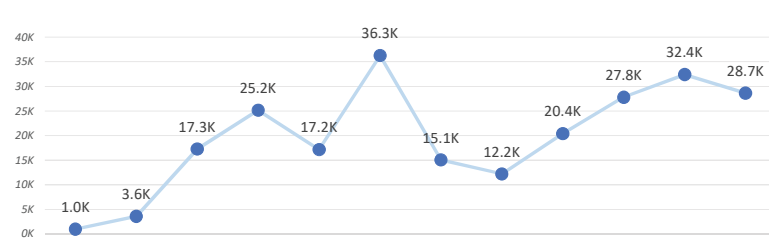


UNHCR through its partners conducted needs and vulnerability assessment targeting affected population in areas of displacement. The collected data is analysed to inform interventions and eligibility for assistance.

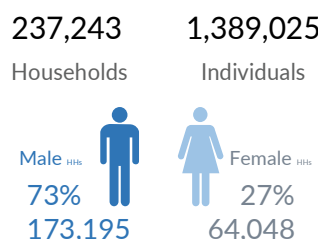
## Households assessed by governorate



## Households assessed by month

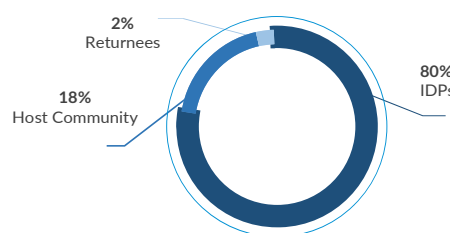


## Breakdown of assessed households

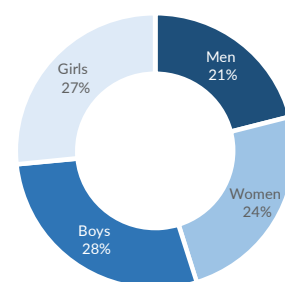


Average family size 6

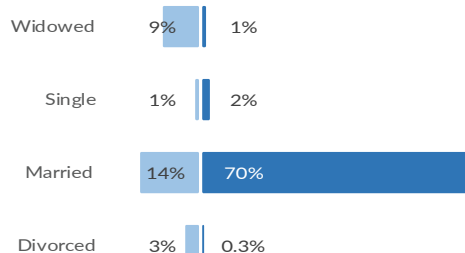
## Displacement profile



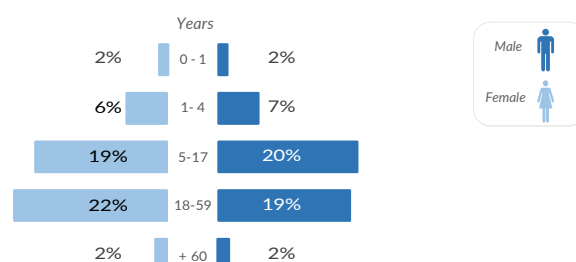
## Ages and gender ratio in family



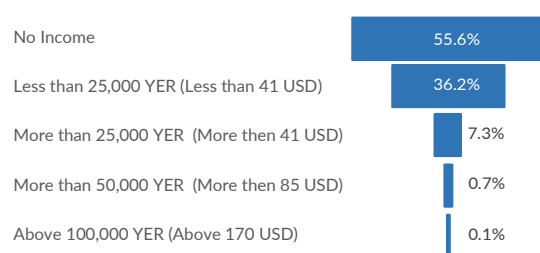
## Marital status of the respondent



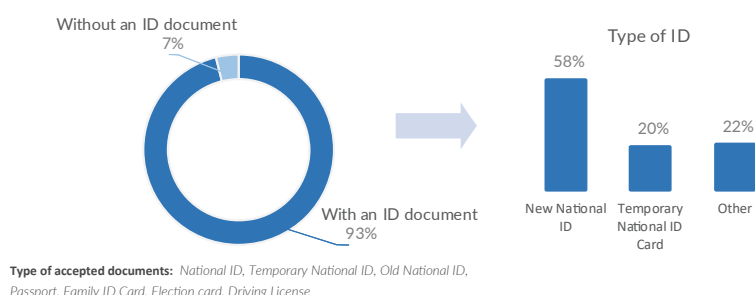
## Age and gender breakdown of families



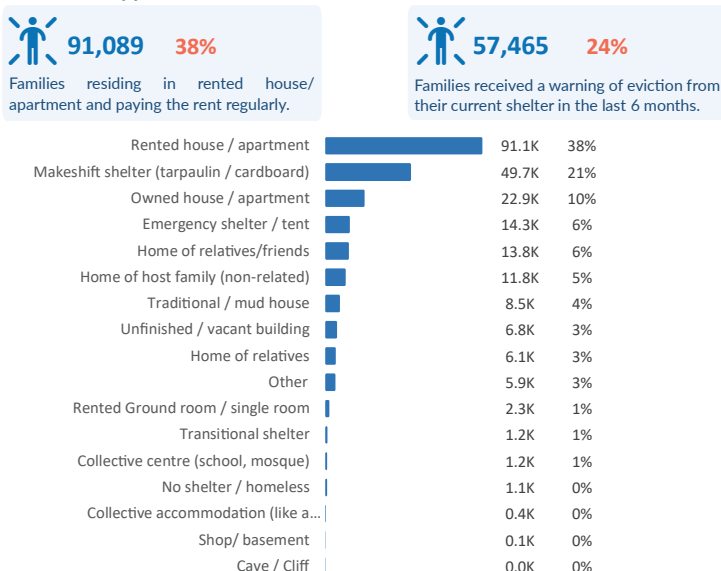
## Average monthly income by assessed household



## Identification documents per household

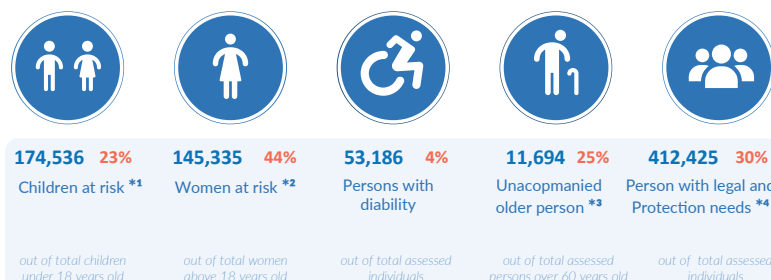


## Shelter type



## Vulnerabilities

**210,659** **89%** Households with at least one member with a vulnerability



\* (Unaccompanied Child (UC), Separated Child (SC), Children not attending schools, Child head of Household, Child engaged in child labour)

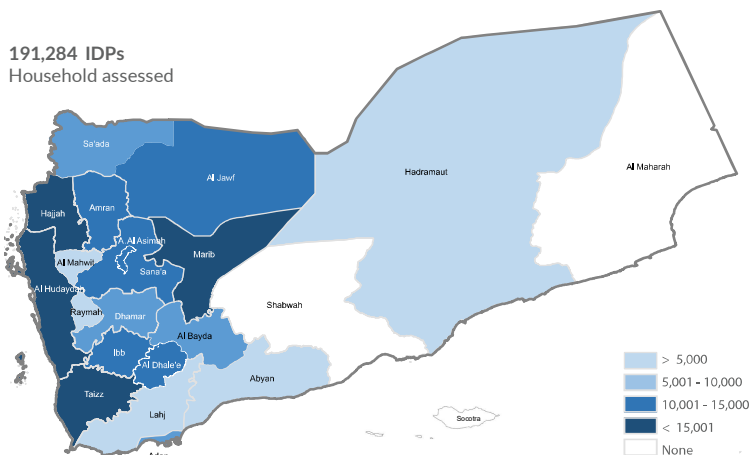
\*\* (Pregnant and lactating women, Women heading household)

\*\* (Persons 60 years old. or above (older person) separated from her/his relatives, family, children, and who is not cared for by another adult)

\*\* (Persons with Injury because of conflict; Person exhibiting signs of psychological distress; persons with protection concern (including arrest or detention); women and girls affected by violence; Persons with other specific needs)

## IDPs: Governorate of Displacement

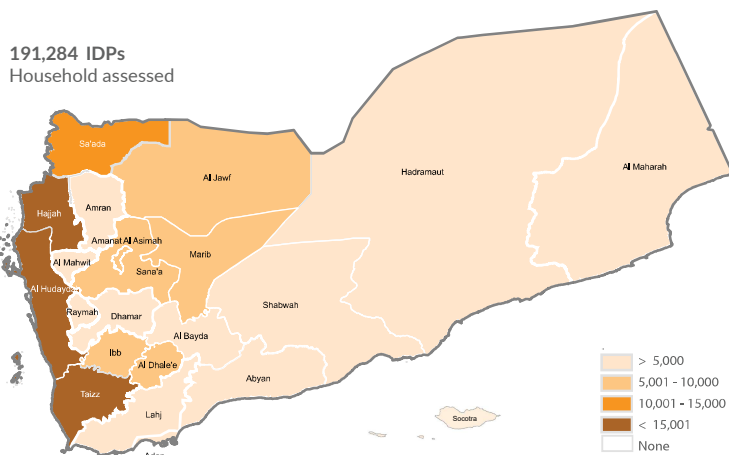
191,284 IDPs  
Household assessed



|                  |       |       |
|------------------|-------|-------|
| Marib            | 15.8% | 30.3K |
| Al Hudaydah      | 15.2% | 29.1K |
| Hajjah           | 11.6% | 22.3K |
| Taizz            | 8.2%  | 15.7K |
| Ibb              | 5.6%  | 10.8K |
| Amran            | 5.5%  | 10.4K |
| Al Jawf          | 5.3%  | 10.2K |
| Sana'a           | 5.2%  | 10.0K |
| Amanat Al Asimah | 5.2%  | 9.9K  |
| Al Dhale'e       | 5.1%  | 9.7K  |
| Sa'ada           | 4.4%  | 8.3K  |
| Dhamar           | 2.9%  | 5.6K  |
| Al Bayda         | 2.7%  | 5.2K  |
| Aden             | 2.6%  | 5.0K  |
| Lahj             | 2.1%  | 4.1K  |
| Abyan            | 1.4%  | 2.6K  |
| Al Mahwit        | 0.6%  | 1.1K  |
| Raymah           | 0.3%  | 0.7K  |
| Hadramaut        | 0.1%  | 0.3K  |

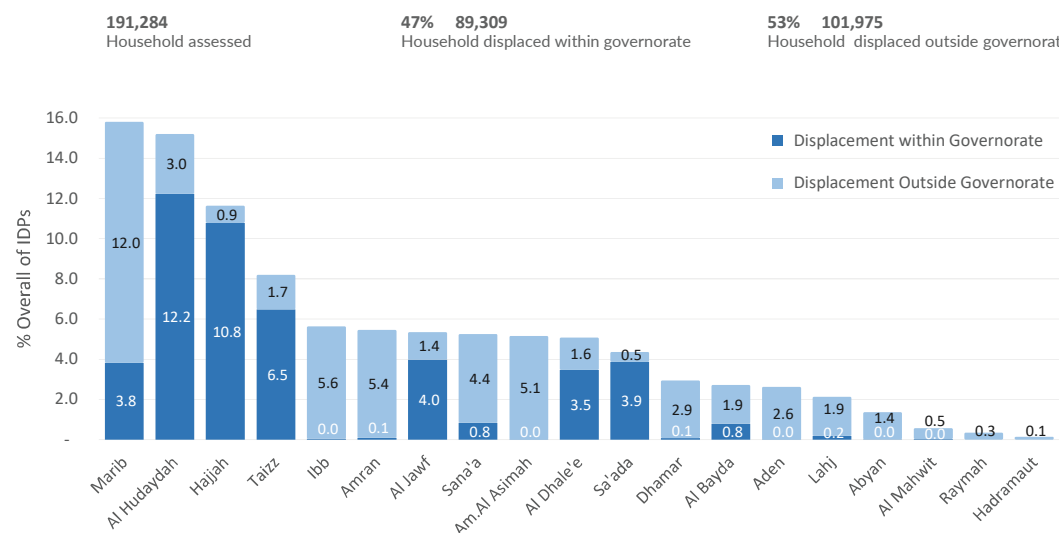
## IDPs: Governorate of Origin

191,284 IDPs  
Household assessed



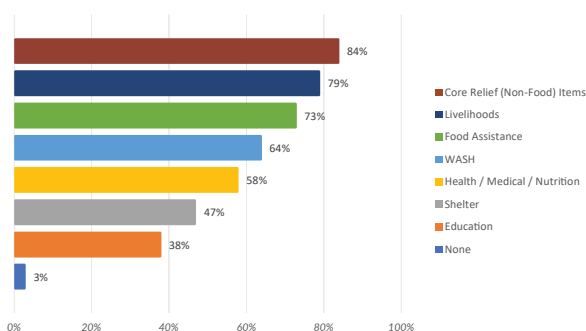
|                  |       |       |
|------------------|-------|-------|
| Al Hudaydah      | 24.4% | 46.7K |
| Taizz            | 17.7% | 33.8K |
| Hajjah           | 16.8% | 32.1K |
| Sa'ada           | 7.4%  | 14.1K |
| Marib            | 5.0%  | 9.6K  |
| Al Jawf          | 5.0%  | 9.6K  |
| Ibb              | 4.4%  | 8.4K  |
| Al Dhale'e       | 4.1%  | 7.8K  |
| Sana'a           | 3.2%  | 6.1K  |
| Amanat Al Asimah | 2.9%  | 5.6K  |
| Dhamar           | 2.0%  | 3.7K  |
| Al Bayda         | 1.6%  | 3.1K  |
| Amran            | 1.6%  | 3.1K  |
| Raymah           | 1.1%  | 2.1K  |
| Lahj             | 0.8%  | 1.5K  |
| Aden             | 0.6%  | 1.2K  |
| Al Mahwit        | 0.6%  | 1.1K  |
| Shabwah          | 0.4%  | 0.7K  |
| Abyan            | 0.3%  | 0.6K  |
| Hadramaut        | 0.1%  | 0.3K  |
| Al Maharah       | 0.0%  | 0.0K  |
| Socotra          | 0.0%  | 0.0K  |

## Displacement within / outside governorate

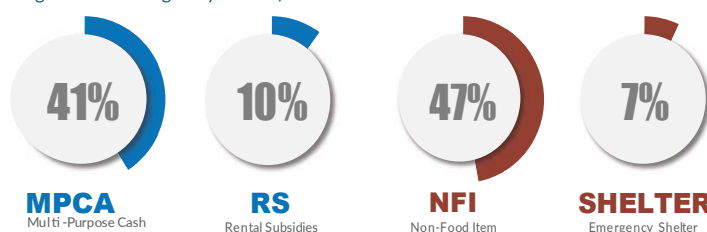


| Governorates  | IDPs          | Displacement within Governorate | Displacement Outside Governorate |
|---------------|---------------|---------------------------------|----------------------------------|
| Marib         | 30.3K         | 7.3 K                           | 22.9 K                           |
| Al Hudaydah   | 29.1K         | 23.4 K                          | 5.7 K                            |
| Hajjah        | 22.3K         | 20.6 K                          | 1.7 K                            |
| Taizz         | 15.7K         | 12.4 K                          | 3.3 K                            |
| Ibb           | 10.8K         | 0.1 K                           | 10.7 K                           |
| Amran         | 10.4K         | 0.2 K                           | 10.3 K                           |
| Al Jawf       | 10.2K         | 7.6 K                           | 2.6 K                            |
| Sana'a        | 10.0K         | 1.6 K                           | 8.4 K                            |
| Am. Al Asimah | 9.9K          | 0.0 K                           | 9.9 K                            |
| Al Dhale'e    | 9.7K          | 6.6 K                           | 3.1 K                            |
| Sa'ada        | 8.3K          | 7.4 K                           | 1.0 K                            |
| Dhamar        | 5.6K          | 0.1 K                           | 5.5 K                            |
| Al Bayda      | 5.2K          | 1.5 K                           | 3.7 K                            |
| Aden          | 5.0K          | 0.0 K                           | 5.0 K                            |
| Lahj          | 4.1K          | 0.3 K                           | 3.7 K                            |
| Abyan         | 2.6K          | 0.0 K                           | 2.6 K                            |
| Al Mahwit     | 1.1K          | 0.0 K                           | 1.1 K                            |
| Raymah        | 0.7K          | 0.0 K                           | 0.7 K                            |
| Hadramaut     | 0.3K          | 0.0 K                           | 0.3 K                            |
| <b>Total</b>  | <b>191.3K</b> | <b>89.3K</b>                    | <b>102.0K</b>                    |

## Households recommended for multi-cluster referral



## % of assessed Households eligible per type (according to UNHCR eligibility criteria)



The assessed household can be eligible for more than one type of assistance. eligibility for assistance is determined by a scoring system based on criteria detected through the assessment.

# 我们的产品



## 大数据平台

国内宏观经济数据库

国际经济合作数据库

行业分析数据库

## 条约法规平台

国际条约数据库

国外法规数据库

## 即时信息平台

新闻媒体即时分析

社交媒体即时分析

## 云报告平台

国内研究报告

国际研究报告

预览已结束，完整报告链接和二维码如下：

[https://www.yunbaogao.cn/report/index/report?reportId=5\\_16755](https://www.yunbaogao.cn/report/index/report?reportId=5_16755)

