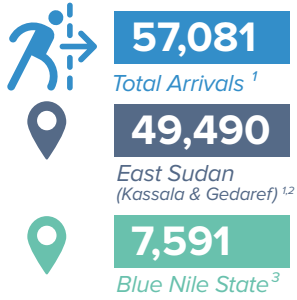
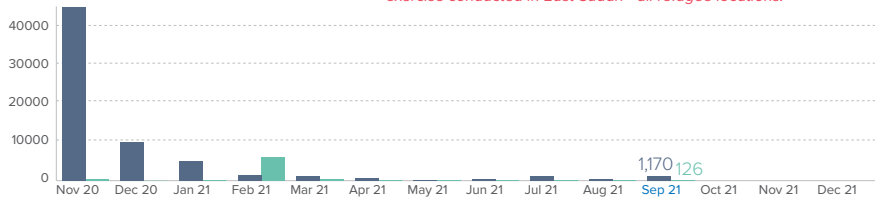


**Arrivals from Ethiopia (Individuals)\***

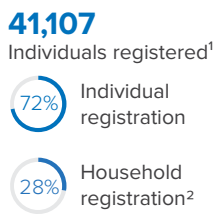


\* Sources: UNHCR, CoR

**Monthly Arrival Trends**

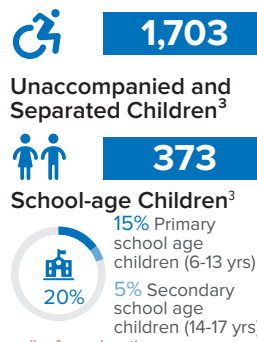


**Registration Status**



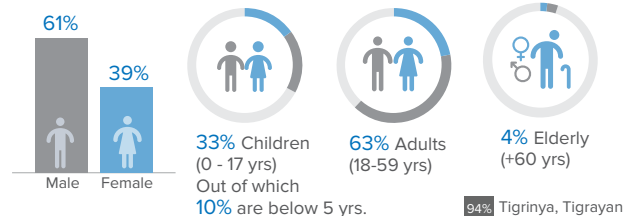
<sup>1</sup> Tenedbha 19,578, Um Rakuba 18,689, Blue Nile 2,840.  
<sup>2</sup> As of 30 Sep 2021  
<sup>3</sup> Estimated/ as of 30 Sep 2021  
*Note: Figures have been revised based on verification exercise conducted in East Sudan - all refugee locations.*

**Persons with Specific Needs<sup>3</sup>**



In November 2020, UNHCR started recording an influx of Ethiopian refugees at the border entry points in East Sudan from northern Ethiopia, after military confrontations in the Tigray region. UNHCR's teams on the ground in the eastern Sudanese states of Kassala and Gedaref are working with the Sudanese Commissioner for Refugees (COR), local authorities and partners to continue monitor and respond to the situation, as well as mobilizing resources to provide life-saving assistance services to the new arrivals. Inter-agency coordination is well established. Similarly, Ethiopian asylum seekers have been crossing from Benishangul-Gumuz region into Sudan's Blue Nile State. UNHCR, COR and partners are also on the ground to respond to their needs.

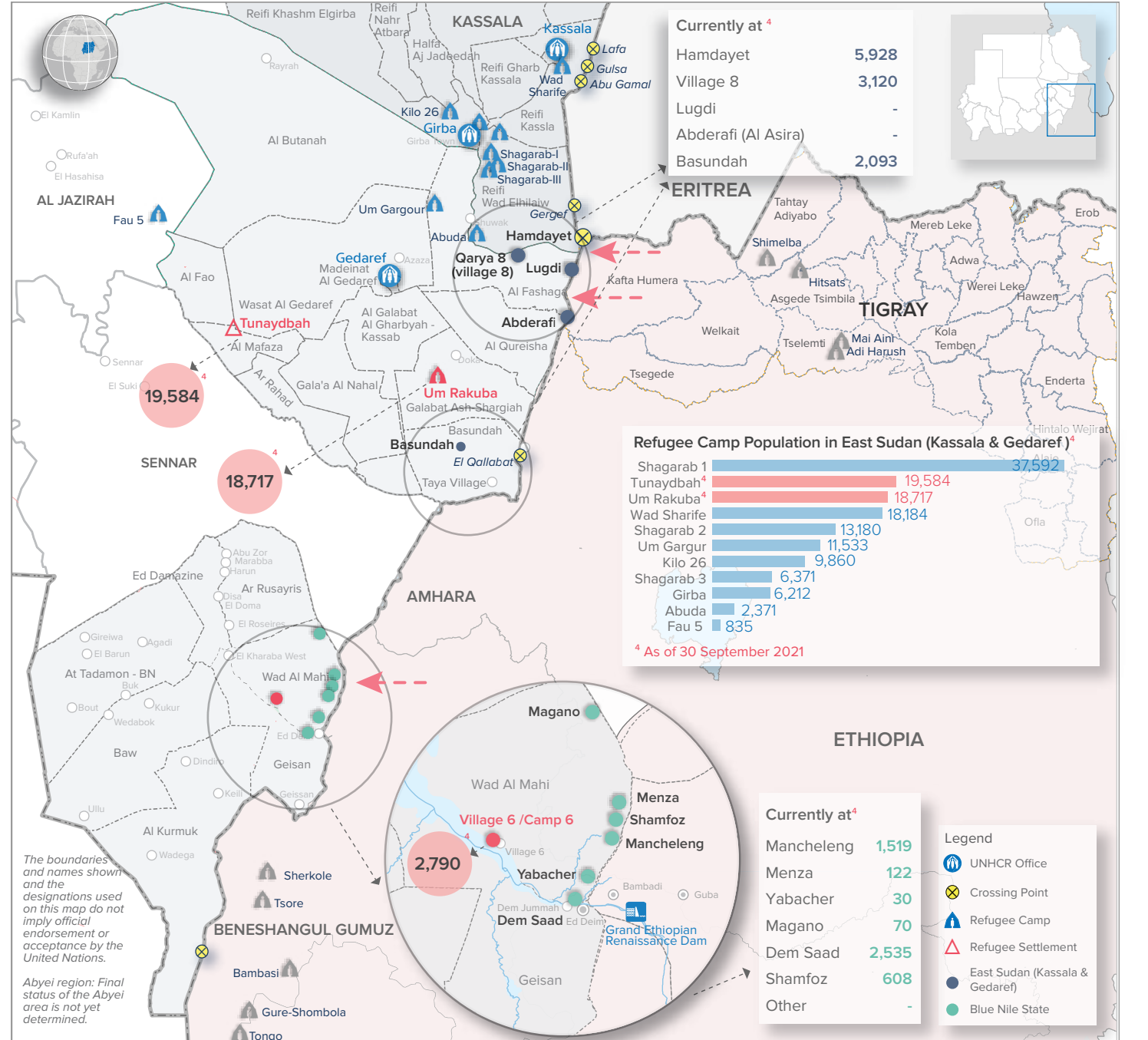
**Age-gender Breakdown<sup>3</sup>**



**Ethnic Groups<sup>3</sup>**



<sup>3</sup> Population distribution statistics are based on registered individuals only.



# 我们的产品



## 大数据平台

国内宏观经济数据库

国际经济合作数据库

行业分析数据库

## 条约法规平台

国际条约数据库

国外法规数据库

## 即时信息平台

新闻媒体即时分析

社交媒体即时分析

## 云报告平台

国内研究报告

国际研究报告

预览已结束，完整报告链接和二维码如下：

[https://www.yunbaogao.cn/report/index/report?reportId=5\\_17033](https://www.yunbaogao.cn/report/index/report?reportId=5_17033)

