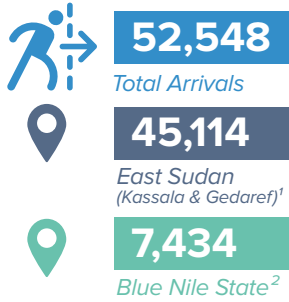
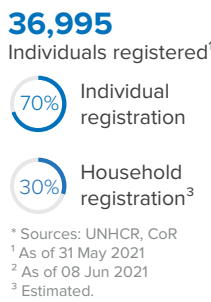


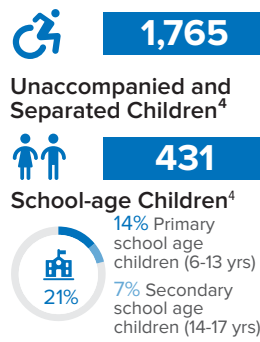
Arrivals from Ethiopia (Individuals)*



Registration Status

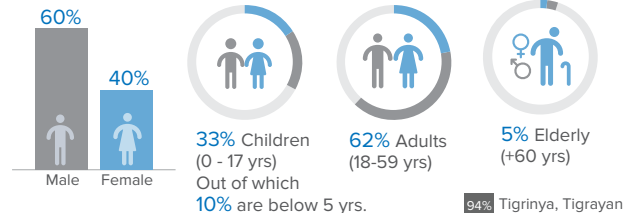


Persons with Specific Needs⁴



In November 2020, UNHCR started recording an influx of Ethiopian refugees at the border entry points in East Sudan from northern Ethiopia, after military confrontations in the Tigray region. UNHCR's teams on the ground in the eastern Sudanese states of Kassala and Gedaref are working with the Sudanese Commissioner for Refugees (COR), local authorities and partners to continue monitor and respond to the situation, as well as mobilizing resources to provide life-saving assistance services to the new arrivals. Inter-agency coordination is well established. Similarly, Ethiopian asylum seekers have been crossing from Benishangul-Gumuz region into Sudan's Blue Nile State. UNHCR, COR and partners are also on the ground to respond to their needs.

Age-gender Breakdown⁴

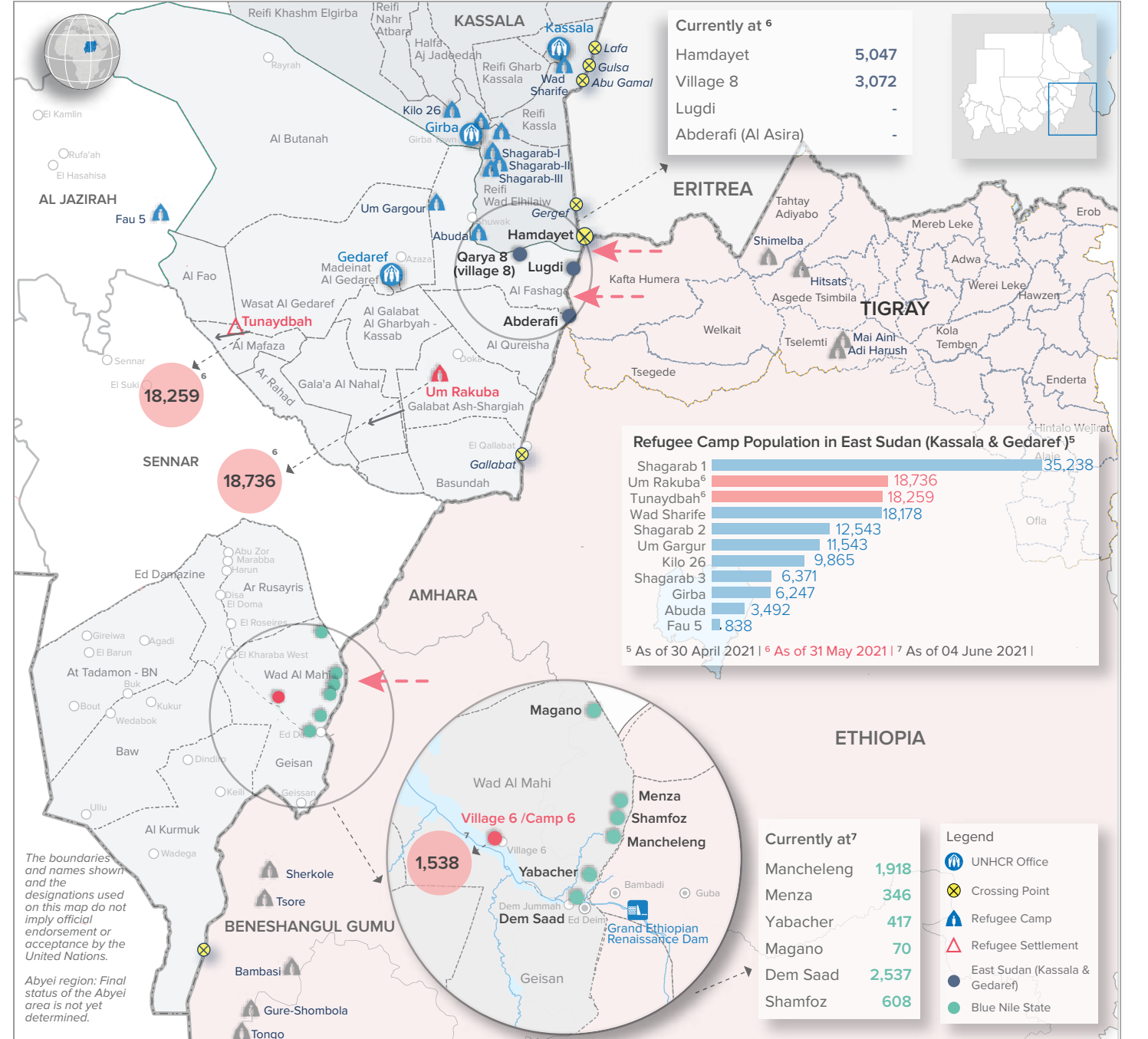
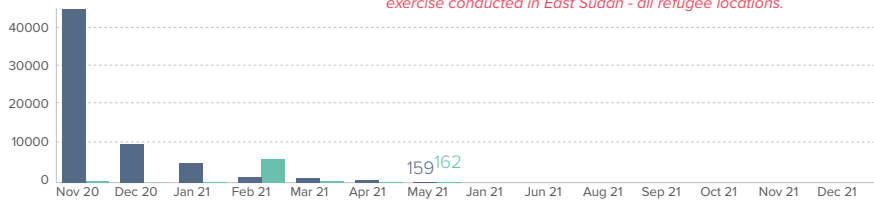


Ethnic Groups⁴



⁴ Population distribution statistics are based on registered individuals only.

Monthly Arrival Trends



我们的产品



大数据平台

国内宏观经济数据库

国际经济合作数据库

行业分析数据库

条约法规平台

国际条约数据库

国外法规数据库

即时信息平台

新闻媒体即时分析

社交媒体即时分析

云报告平台

国内研究报告

国际研究报告

预览已结束，完整报告链接和二维码如下：

https://www.yunbaogao.cn/report/index/report?reportId=5_17316

