



# **SOUTH SUDAN SITUATION**

RESPONDING TO THE NEEDS OF DISPLACED SOUTH SUDANESE AND REFUGEES

**Supplementary Appeal**

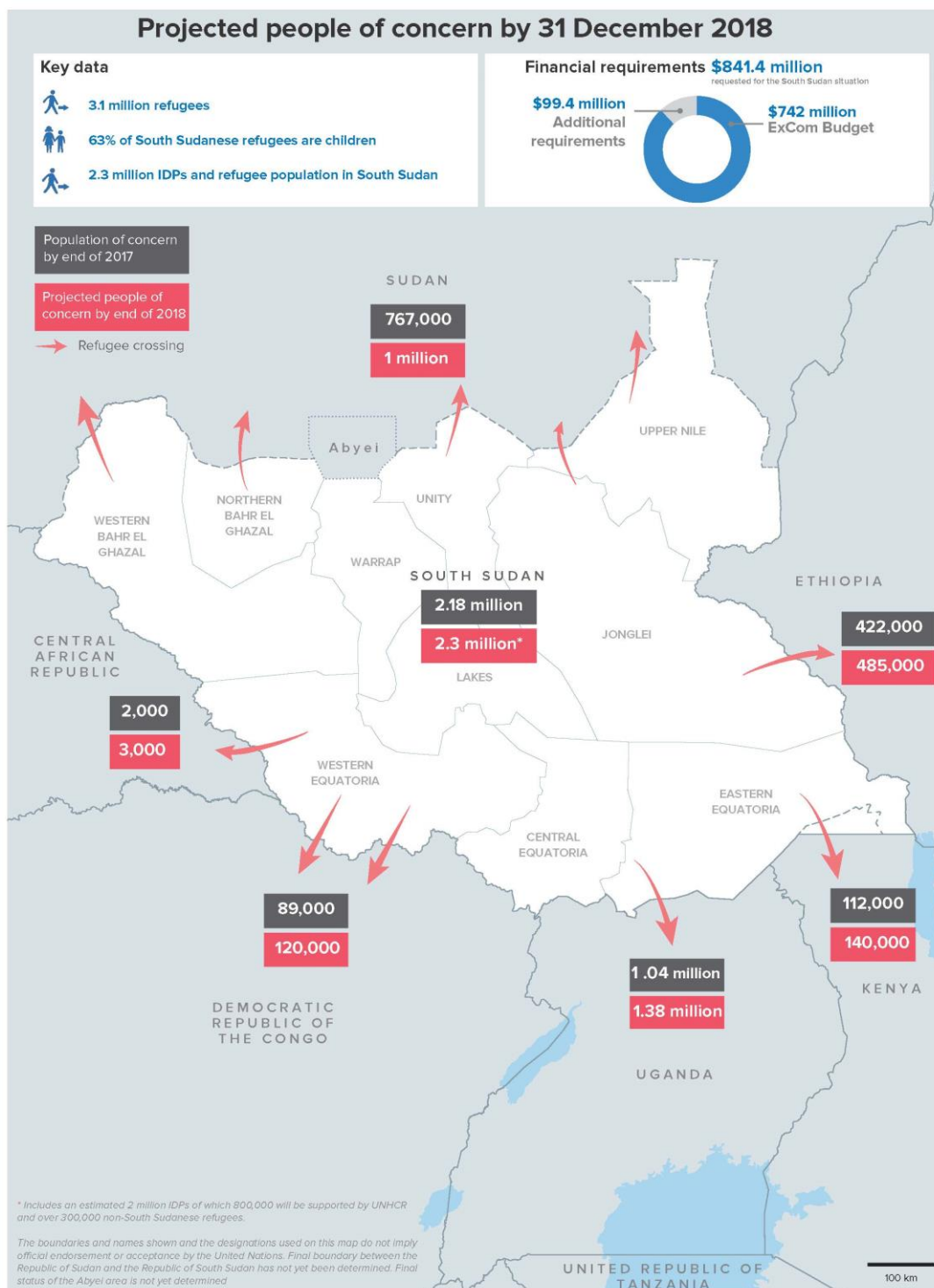
January - December 2018



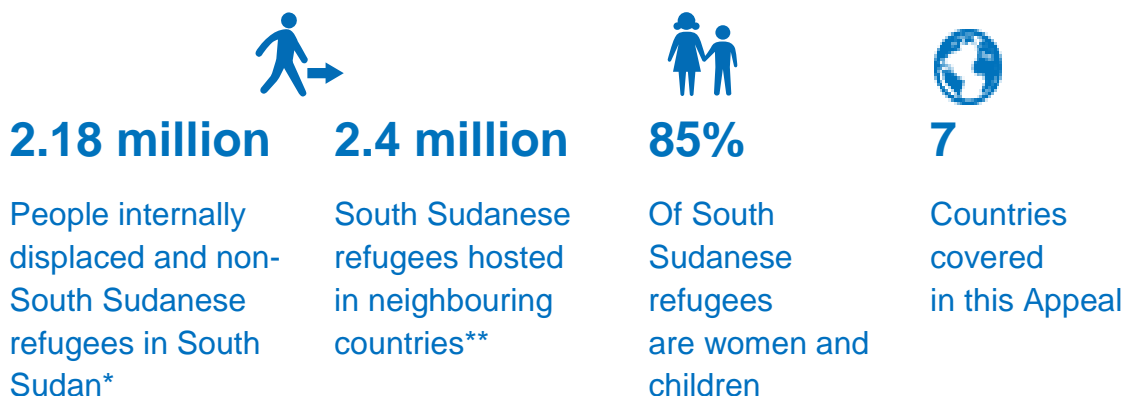
# Contents

<b>Overview of the South Sudan situation</b>	<b>4</b>
The South Sudan situation Supplementary appeal and the regional Refugee Response Plan – how they fit together	6
Summary of financial requirements	7
Planning assumptions	8
Strategic overview	9
Key intervention areas	12
Coordination and working in partnership	15
Priorities for resource mobilization	16
Implications for people of concern if UNHCR's strategy is not supported	17
<b>South Sudan</b>	<b>18</b>
Overview	19
Needs and response	20
Identified needs	20
Response	21
Key intervention areas	23
Coordination and working in partnership	25
Financial requirements	26
<b>Financial requirements in countries of asylum</b>	<b>27</b>
Uganda	28
Ethiopia	29
Sudan	30
Kenya	31
The Democratic Republic of the Congo	32
The Central African Republic	33

## Map of the area covered by this appeal



## Overview of the South Sudan situation



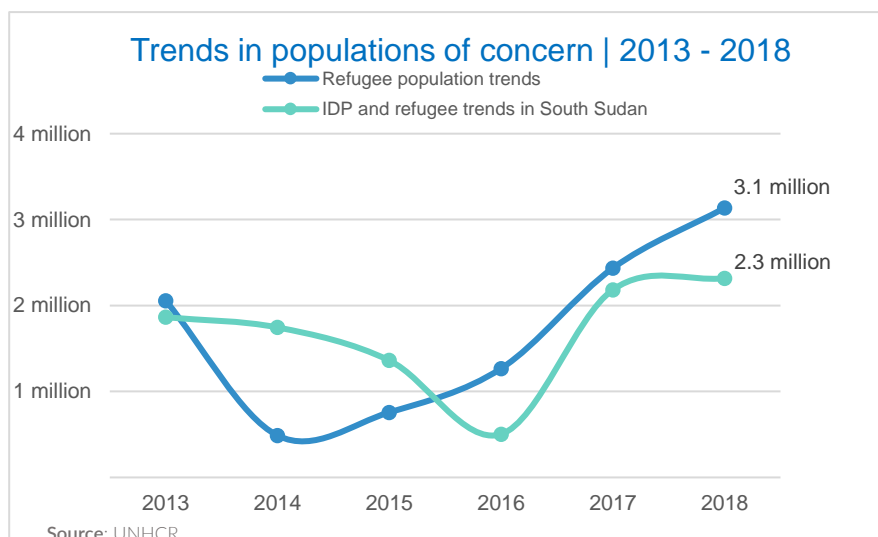
\* As of end December 2017: source HCT / UNHCR

\*\* As of end December 2017: source UNHCR

Renewed violence in South Sudan, compounded by drought and the threat of famine, has led to the **fastest growing refugee situation in Africa today and the world's third biggest refugee crisis**. Over one third of South Sudan's estimated 12 million citizens are displaced, while more than half of the population is affected by the crisis, and nearly two million IDPs are in need of urgent humanitarian assistance. The political and security situation inside the country remains volatile. Armed conflict persists, along with killings, abductions, rape and a general state of lawlessness.

The **refugee exodus from South Sudan continues at an alarming rate**, even as the crisis is entering its fifth year. **Close to 2.4 million South Sudanese have** fled to neighbouring countries mostly to Uganda—the largest host country in sub-Saharan Africa—followed by Sudan, Ethiopia, Kenya, the Democratic Republic of the Congo (DRC) and the Central African Republic (CAR). Refugees from South Sudan have been granted

*prima facie* refugee status by these countries, demonstrating strong commitment to refugee protection despite limited national resources. **While South Sudan's neighbours have generously upheld their responsibility to provide asylum and assistance to refugees, urgent large-scale support is needed for the refugee response.**

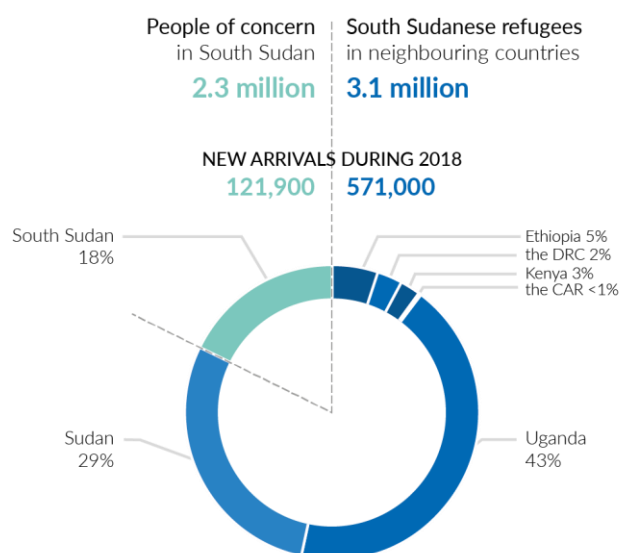




Severe food insecurity further exacerbates the situation, leading to massive displacement and movements across the borders, with many refugee children facing alarming levels of malnutrition. The majority of the refugees are women and children, and nearly **63 percent of the South Sudanese refugees hosted in neighbouring countries are under the age of 18**, many who have fled alone.

With the current levels of violence in South Sudan, **displacement trends are expected to be high both within the country and across the area covered by the situation**. UNHCR expects that the influx into neighbouring countries will continue and that an estimated 571,000 additional people will likely seek refuge. This would bring the estimated South Sudanese refugee population to **3.1 million**—an increase of 18 per cent—by the end of December 2018. This population is urgently in need of protection, shelter and medical care. In South Sudan itself, some two million IDPs and 307,000 non-South Sudanese refugees are expected to be in need of assistance. This would bring the total number of people of concern to UNHCR in South Sudan to 2.3 million by the end of December 2018.

#### PROJECTED POPULATIONS OF CONCERN | End of 2018



This Supplementary Appeal presents UNHCR's financial requirements for its response, for which it is **seeking \$841.4 million including \$99.4 million** in urgent additional requirements from January to December 2018 to address the most pressing needs of South Sudanese IDPs and non-South Sudanese refugees in South Sudan, as well as South Sudanese refugees in neighbouring countries.

While continuing to support main host countries to ensure access to protection, UNHCR will give particular emphasis to **protection interventions** in border areas, including **profiling and registration, responding to sexual and gender-based violence (SGBV) and providing child protection, and promoting community-based approaches**. Essential service delivery is prioritized to ensure refugees have life-saving and life-sustaining support.

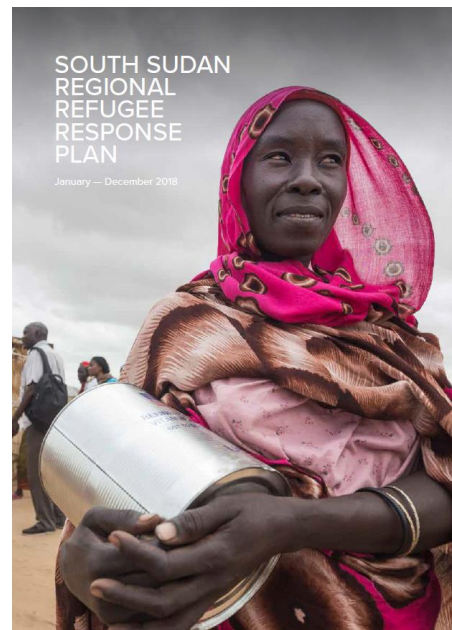
## The South Sudan situation Supplementary appeal and the regional Refugee Response Plan – how they fit together

This **Supplementary Appeal** presents UNHCR's specific financial requirements and an overview of its related activities for advocacy and resource mobilization purposes concerning its response to the South Sudan situation.

As such, it is aligned with the **South Sudan regional Refugee Response Plan** (RRP, available on the Global Focus website at <http://reporting.unhcr.org/publications>) and within which the **needs of South Sudanese refugees** are outlined in detail.

The RRP lays out the inter-agency response strategy and financial requirements of UNHCR and its 74 partners to respond to the needs of refugees hosted in six neighbouring countries of asylum in 2018: the CAR, the DRC, Ethiopia, Kenya, Sudan and Uganda. More details on these individual operations are therefore included in the country chapters of that document.

More detailed information on UNHCR's country financial requirements and details on interventions planned in South Sudan are available in the annexes of this Supplementary Appeal.



## Summary of financial requirements

UNHCR's Executive Committee (ExCom) budget for the South Sudan situation in 2018 was \$742,052,647. To address the increasing protection and life-saving needs of displaced people, UNHCR has established a supplementary budget to **strengthen protection capacity and response in seven countries**. Additional requirements for Ethiopia, Sudan and Uganda presented in this Supplementary Appeal amount to **\$99.4 million**. The total revised 2018 requirements for the South Sudan situation now amount to **\$841.4 million**, including support costs.

OPERATION	ExCom budget not related to the South Sudan situation	SOUTH SUDAN SITUATION			Total revised requirements
		ExCom Budget and subsequent adjustments related to the South Sudan situation	Additional requirements	Total	
CENTRAL AFRICAN REPUBLIC	38,683,253	2,586,168	-	2,586,168	41,269,421
DEMOCRATIC REPUBLIC OF THE CONGO	174,585,203	26,393,699	-	26,393,699	200,978,902
ETHIOPIA	161,707,215	158,805,010	14,292,451	173,097,461	334,804,676
KENYA	141,620,457	43,992,003	-	43,992,003	185,612,460
SOUTH SUDAN	-	155,287,323	-	155,287,323	155,287,323
SUDAN	116,615,175	115,302,141	23,981,483	139,283,624	255,898,799
UGANDA	179,042,404	237,489,748	54,048,347	291,538,095	470,580,499
REGIONAL AND GLOBAL ACTIVITIES	12,736,099	2,196,555	573,161	2,769,716	15,505,815
<b>SUBTOTAL</b>	<b>824,989,806</b>	<b>742,052,647</b>	<b>92,895,442</b>	<b>834,948,089</b>	<b>1,649,937,895</b>
SUPPORT COSTS (7 PER CENT)	-	-	6,502,681	6,502,681	6,502,681
<b>TOTAL</b>	<b>824,989,806</b>	<b>742,052,647</b>	<b>99,398,123</b>	<b>841,450,770</b>	<b>1,656,440,576</b>

预览已结束，完整报告链接和二维码如下：

[https://www.yunbaogao.cn/report/index/report?reportId=5\\_17911](https://www.yunbaogao.cn/report/index/report?reportId=5_17911)

