

2021 JOINT RESPONSE PLAN ROHINGYA HUMANITARIAN CRISIS

JANUARY - DECEMBER 2021



BANGLADESH

For the purpose of the 2021 Joint Response Plan, the term “affected populations” refers to the entire population impacted by the crisis, including host communities. People or populations “in need” refer to a sub-set of the affected population who have been assessed to be in need of protection interventions or humanitarian assistance as a result of the crisis. “Target population” refers to those people in need who are specifically targets of support interventions and assistance activities contained in this response plan.

The Government of Bangladesh refers to the Rohingya as “Forcibly Displaced Myanmar Nationals (FDMN).” The UN system refers to this population as Rohingya refugees, in line with the applicable international framework. In this Joint Response Plan document, both terms are used, as appropriate, to refer to the same population.

The ISCG Secretariat has produced the 2021 Joint Response Plan for the Rohingya Humanitarian Crisis on behalf of the Strategic Executive Group and partners.

The designations employed and the presentation of material in the report do not imply the expression of any opinion whatsoever on the part of the Secretariat of the United Nations concerning the legal status of any country, territory, city or area or of its authorities, or concerning the delimitation of its frontiers or boundaries.

Cover photo credit: ISCG / Saikat Mojumder / 2021



TABLE OF CONTENTS

PART I: BACKGROUND, NEEDS AND RESPONSE PLAN SUMMARY

The Protection Framework for the Humanitarian Response	9
Background, Needs and Response Plan Summary	10
Strategic Objectives	13
SO1: Strengthen the protection of Rohingya refugee women, men, girls and boys	13
SO2: Deliver life-saving assistance to populations in need	14
SO3: Foster the well-being of host communities in Ukhiya and Teknaf Upazilas	15
SO4: Work towards sustainable repatriation of Rohingya refugees to Myanmar	15

PART II: KEY ASPECTS AND CHALLENGES

Mitigating Potential Tensions Between Communities	16
Mainstreaming	16
Bhasan Char	18
Voluntary Repatriation	18

PART III: HUMANITARIAN NEEDS, RESPONSE AND FUNDING REQUIREMENTS

Food Security	20
Health	21
Shelter and Non Food Items	23
Water, Sanitation and Hygiene	25
Site Management and Site Development	27
Protection / Gender-Based Violence / Child Protection	29
Education	33
Nutrition	35
Communication with Communities	37
Emergency Telecommunications	39
Logistics	40
Coordination	41
Healthcare for Humanitarian Personnel and other Front-Line Workers	42

ANNEXES

Annex I	Monitoring Framework
Annex II	Appealing Partners and Financial Information

LIST OF FIGURES

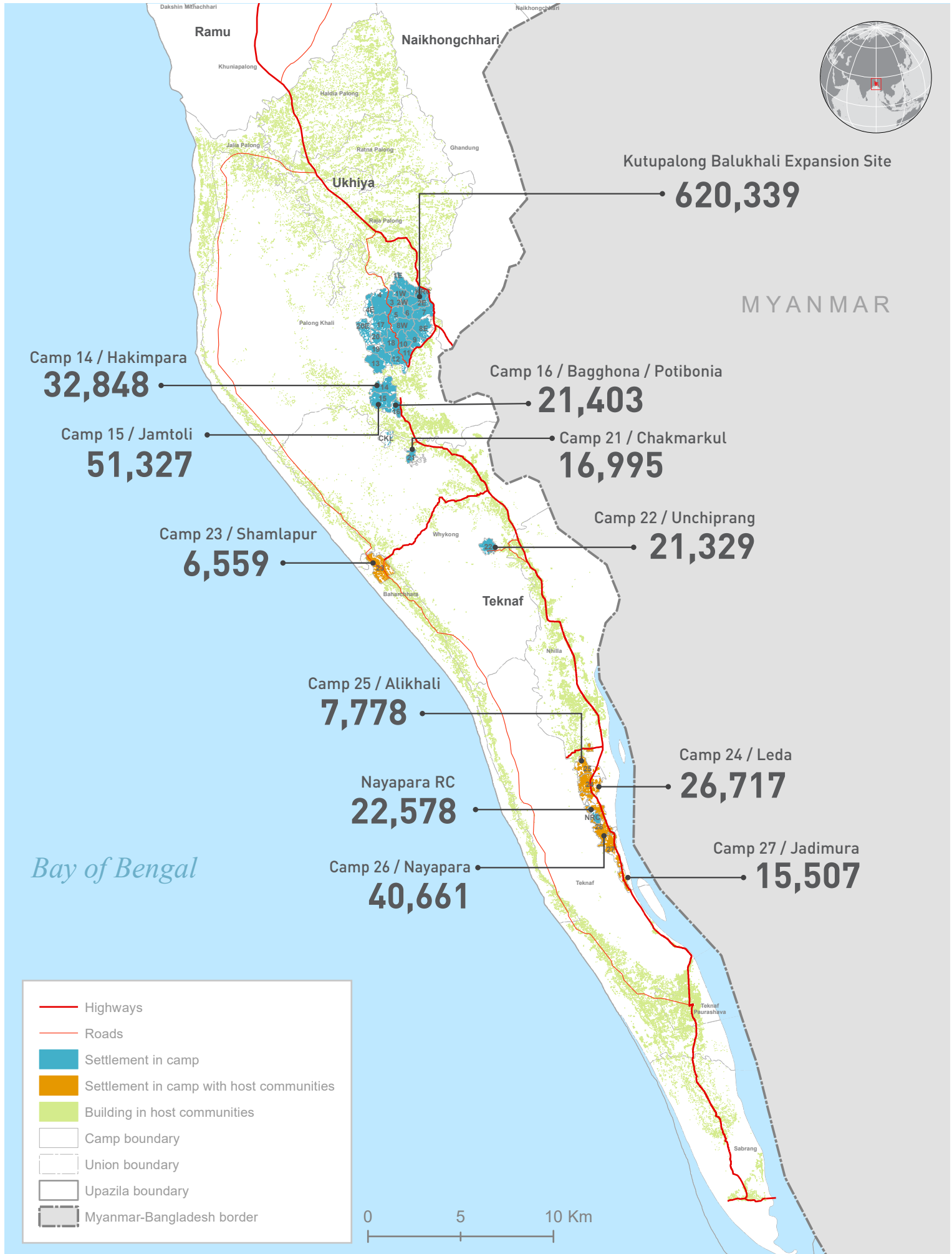
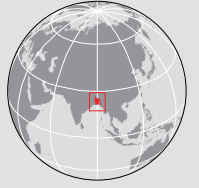
Figure 1: Coordination mechanisms in Bangladesh for the Rohingya Humanitarian Response	12
Figure 2: JRP partners breakdown	16
Figure 3: Geographic coverage of JRP partners: number of partners per Union	19

LIST OF ABBREVIATIONS

APBn	Armed Police Battalion	JRP	Joint Response Plan
BSFP	Blanket Supplementary Feeding Program	J-MSNA	Joint Multi-Sector Needs Assessment
CBO	Community-Based Organization	LCFA	Learning Competency Framework Approach
CEmONC	Comprehensive Emergency Obstetric & Newborn Care	LPG	Liquified Petroleum Gas
CiC	Camp-in-Charge	MAM	Moderate Acute Malnutrition
COVID-19	Coronavirus Disease	MCP	Myanmar Curriculum Pilot
CPSS	Child Protection Sub-Sector	MIYCF	Maternal, Infant and Young Child Feeding
CPIMS	Child Protection Information Management System	MoDMR	Ministry of Disaster Management and Relief
CSI	Capacity Sharing Initiative	MoFA	Ministry of Foreign Affairs
CSO	Civil Society Organization	MoHA	Ministry of Home Affairs
CwC	Communication with Communities	MoHFW	Ministry of Health and Family Welfare
DC	Deputy Commissioner	MoSW	Ministry of Social Welfare
DDGP	District Development and Growth Plan	MoPME	Ministry of Primary and Mass Education
DEO	Directorate of Education Office	MoWCA	Ministry of Women and Children Affairs
DIO	District Information Office	MTF	Medical Treatment Facility
DPHE	Department of Public Health Engineering	MUAC	Mid-Upper Arm Circumference
DPEO	Directorate of Primary Education Office	NFI	Non-Food Items
DRR	Disaster Risk Reduction	NGO	Non-Governmental Organization
DRRO	Disaster Relief and Rehabilitation Office	NGOAB	Non-Governmental Organization Affairs Bureau
DSS	Department of Social Services	NTF	National Task Force
ECC	Emergency Child and Caregiver	PLW	Pregnant and Lactating Women
ETS	Emergency Telecommunications Sector	PSEA	Protection from Sexual Exploitation and Abuse
FDMN	Forcibly Displaced Myanmar Nationals	RRRC	Refugee Relief and Repatriation Commissioner
FSS	Food Security Sector	SAM	Severe Acute Malnutrition
GBV	Gender-Based Violence	SARI ITC	Severe Acute Respiratory Infection Isolation and Treatment Centre
GBVSS	Gender-Based Violence Sub-Sector	SC	Stabilization Centre
HoSOG	Heads of Sub-Offices Group	SEG	Strategic Executive Group
HLP	Housing Land and Property	SMEP	Site Management and Engineering Project
HRP	Humanitarian Response Plan	SMSD	Site Management and Site Development
INF	Integrated Nutrition Facility	SRH	Sexual and Reproductive Health
INGO	International Non-Governmental Organization	UN	United Nations
IPC	Infection Prevention and Control	UNO	Upazila Nirbahi Officer
ISCG	Inter-Sector Coordination Group	USD	United States Dollar
IYCF	Infant and Young Child Feeding	WASH	Water, Sanitation and Hygiene



BANGLADESH: COX'S BAZAR REFUGEE POPULATION AS OF 31 MARCH 2021



Bay of Bengal

- Highways
- Roads
- Settlement in camp
- Settlement in camp with host communities
- Building in host communities
- Camp boundary
- Union boundary
- Upazila boundary
- Myanmar-Bangladesh border



2021 JOINT RESPONSE PLAN ROHINGYA HUMANITARIAN CRISIS

JANUARY - DECEMBER 2021



KEY FIGURES 2021

1.36M PEOPLE IN NEED AND TARGETED

49.1% Men & Boys  **50.9%** Women & Girls

Host communities **472K**  Rohingya refugees **884K***

*Rohingya refugees/Forcibly Displaced Myanmar Nationals (FDMN) registered under the joint Government-UNHCR registration exercise as of 31 March 2021. This figure does not include a number of persons who are in the process of registration or expected to be registered in 2021, including a number of newborns, who were not able to be registered in 2020 due to the COVID-19 pandemic.

\$943M TOTAL REQUIREMENTS

185 PROJECTS

134 PARTNERS*

9 UN agencies

56 International NGOs

69 Bangladeshi NGOs

*This includes 64 partners appealing directly, with 70 implementing partners identified thus far.



Strategic Objective 1
Strengthen the protection of Rohingya refugee women, men, girls and boys.

In close cooperation with the Government of Bangladesh and affected populations, protect individuals and communities, and contribute to an enabling environment to ensure the basic rights and well-being of Rohingya refugees, placing communities at the centre of the response.



Strategic Objective 2
Deliver life-saving assistance to populations in need.

Maintain and rationalize services and assistance to ensure equal access for affected populations in need of humanitarian assistance. In close cooperation with the Government of Bangladesh and affected populations, enhance preparedness and contingency plans for disaster responses at the Upazila level.



Strategic Objective 3
Foster the well-being of host communities in Ukhiya and Teknaf Upazilas.

In close cooperation with the Government of Bangladesh and affected populations, and in the spirit of mitigating the effects of hosting a large number of Rohingyas on the host communities in Ukhiya and Teknaf, facilitate equitable access to quality services for communities; mitigate potential tensions between the Rohingya refugees and the host communities; strengthen public service infrastructure and delivery through system and capacity strengthening; support sustainable livelihoods for host communities; and rehabilitate the environment and eco-system.

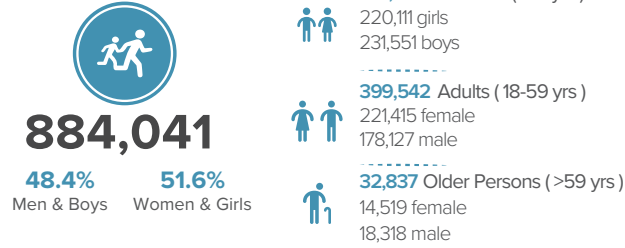


Strategic Objective 4
Work towards sustainable repatriation of Rohingya refugees to Myanmar.

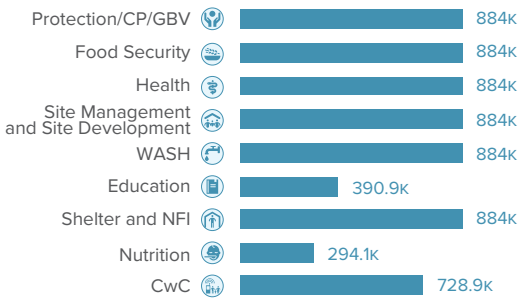
Support Rohingya refugees to build skills and capacities commensurate with opportunities available in Rakhine State and capacities that would help with their sustainable return and reintegration in Myanmar when conditions become conducive.

AT A GLANCE

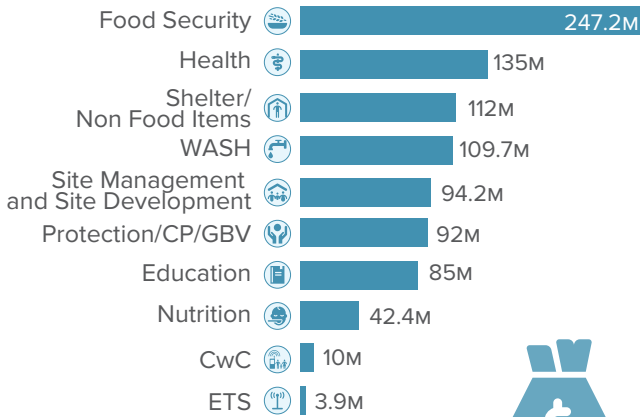
TARGETED ROHINGYA REFUGEES



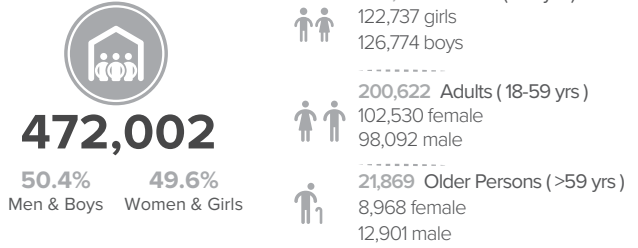
ROHINGYA REFUGEE POPULATION TARGETED



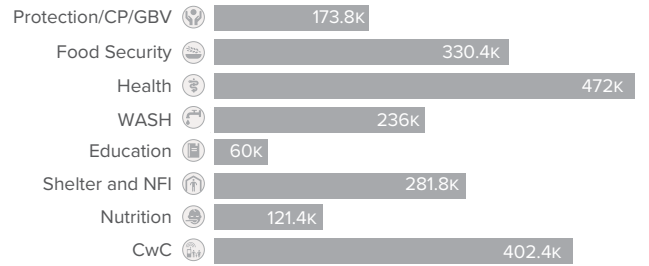
BREAKDOWN OF REQUIREMENTS



TARGETED HOST COMMUNITY IN UKHIYA AND TEKNAF

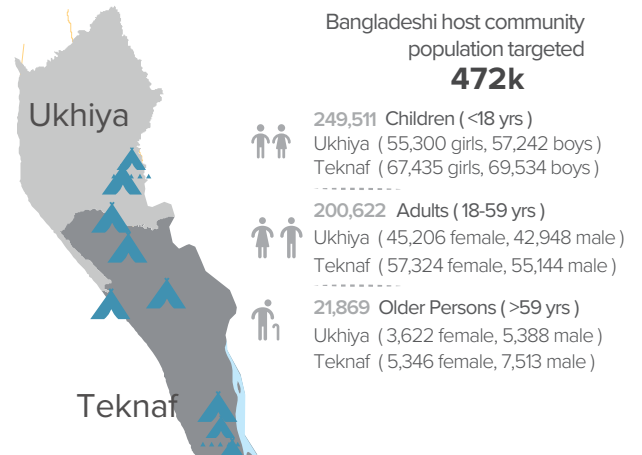


BANGLADESHI HOST COMMUNITY POPULATION TARGETED



Targeted host community population live in 10 Unions and 1 Municipality of Ukhiya and Teknaf Upazila, St. Martin Union is not included

UKHIYA AND TEKNAF UPAZILAS IN COX'S BAZAR DISTRICT



预览已结束，完整报告链接和二维码如下：

https://www.yunbaogao.cn/report/index/report?reportId=5_18031



云报告
https://www.yunbaogao.cn

云报告
https://www.yunbaogao.cn

云报告
https://www.yunbaogao.cn