



World Food
Programme

SAVING
LIVES
CHANGING
LIVES

BUILDING CLIMATE RESILIENCE IN LATIN AMERICA AND THE CARIBBEAN

The World Food Programme's Experience

THE CLIMATE CHALLENGE

The impacts of climate variability and change are already visible in Latin America and the Caribbean (LAC).

Central and South America are characterised by delayed onset of the rainy season, increasing frequency and intensity of droughts, as well as excessive rains and severe flooding and landslides. Rural communities, especially subsistence farmers, are affected by water scarcity and eroding soils which reduce their food production and their ability to meet basic food and nutritional needs.

This further exacerbates poverty and capacities to adapt to the changing weather patterns, increasing the pressure

on communities and local governments, and leading to an alarming rate of permanent migration out of areas consecutively affected by climate variability and change.

In the Caribbean, small island states are experiencing more intense hurricanes, the risk of sea level rise in low-lying coastal areas, and losses to ecosystem services that impact people's livelihoods.



CLIMATE RESILIENCE

WFP works directly with communities across LAC to help increase their capacities to adapt to the impacts of climate variability and climate change. WFP aims to ensure that vulnerable households, communities, their livelihoods and the ecosystems they depend on become more resilient to climate-related shocks and stressors, and with a view towards scalable and sustainable transformation. Our work builds on our well-renowned experience and expertise in having:

- Extensive **field presence** and the building of trust with the communities we serve
- An **inclusive approach** to ensure the most vulnerable, marginalised and food insecure are prioritised
- Ambition to be **gender transformative** in addressing [underlying gender inequalities](#)
- An ability to **foster partnerships** with governments, academia, the private sector and civil society
- The drive to find **innovative solutions** to address people's needs sustainably and at scale
- A focus on robust **evidence generation** to promote learning and government investment.



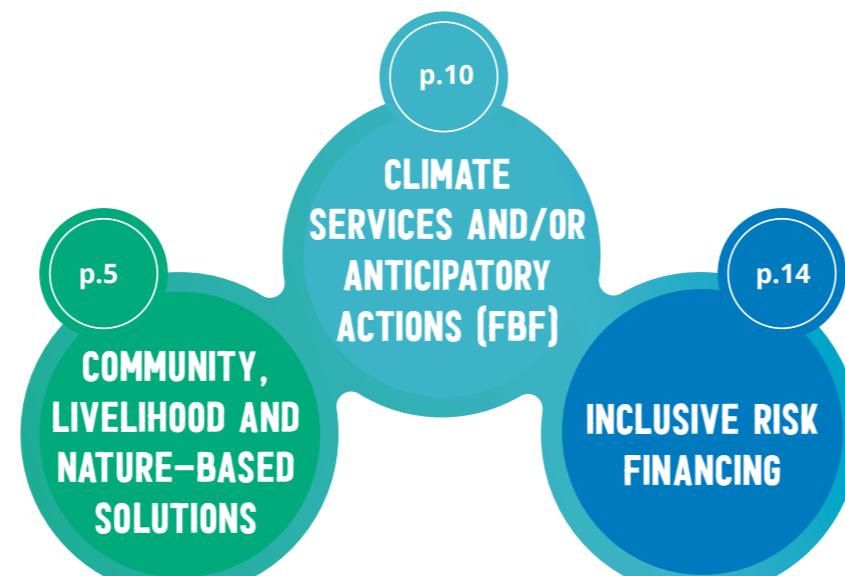
WFP APPROACH

Climate variability and change are key drivers of hunger. WFP is focused on building the capacities of communities and governments to adapt to these growing climatic impacts in LAC. This includes building on our lengthy experience in emergency response and community-level resilience work to provide a range of climate innovations that can end hunger and achieve food security and improve nutrition across the region.

WHY

- Droughts
- Floods and Landslides
- Hurricanes
- Low water availability
- Seasonal delays
- Reduced food production
- + compounded by:
- Poverty
- Malnutrition
- Violence and insecurity

HOW



RESULTS

- Food security and peace
- Economic and social resilience
- Institutional preparedness
- **CLIMATE RISK MANAGEMENT AND RESILIENCE**
- Migration prevention
- Gender transformation pathways
- Social behaviour change
- Inclusive, sustainable and scalable development

- Youth
- Families
- Indigenous population
- Farmers
- Women
- Government
- Elderly

FOR WHO

- Government
- United Nations
- Private Sector
- Civil Society
- Academia
- International Cooperation

PARTNERS



COMMUNITY, LIVELIHOOD & NATURE-BASED SOLUTIONS

Enabling climate change adaptation that is community-led, based on people's priorities, needs, knowledge and capacities, and where nature-based solutions consider the ecosystem services upon which livelihoods depend.



THE PROBLEM

Rural communities are already feeling the brunt of the impacts of climate variability and change on their livelihoods, food security and nutrition. This includes delayed rainy seasons, lengthier dry conditions, unpredictable rainfall and more extreme storms and floods that are making it harder for people to continue their traditional livelihoods. Environmental degradation has been further heightened by climatic impacts.

OUR APPROACH

WFP has decades of experience working directly with communities across the region. At the grassroots level, we help communities increase their capacities to adapt to the impacts of climate variability and change. This includes enhancing people's awareness, knowledge, skills and access to resources that will help communities conserve natural resources and protect their families and natural environment from climatic impacts. Our participatory approaches enable the [inclusion of women](#), youth, the elderly, indigenous and marginalised groups, with benefits towards social cohesion and peacebuilding. We also broker closer partnerships with local governments, civil society, non-government organisations, the private sector and technical partners, with the aim of cultivating trust and local-level governance structures that will ensure more sustainable, long-term support.

WFP Archive

OUR APPROACH

AWARENESS AND KNOWLEDGE

By enhancing knowledge and skills on climate change adaptation, together with access to technology and assets, WFP ensures that vulnerable households, communities and governments have the capacities to choose effective adaptation options and withstand current and future climate risks.

SUCCESS STORY



WFP - Edison Marcial

COLOMBIA & ECUADOR

Participatory workshops for Awá communities has allowed people to strengthen their local capacities in using improved agricultural practices in the border between Colombia and Ecuador.

OUR APPROACH

SKILLS AND LIVELIHOOD DIVERSIFICATION

By promoting livelihood diversification, WFP supports individuals, households and communities in finding new ways to raise incomes while reducing environmental risks that will allow them to withstand current and future climate risks. This includes promoting climate smart agricultural techniques that are more resilient to climate-related shocks while also helping smallholder farmers improve their agricultural productivity and incomes.

SUCCESS STORY



WFP - Oscar Duarte

DRY CORRIDOR

In the Dry Corridor, smallholder farmers increased their agricultural productivity by using climate-smart agricultural practices such as retaining soil moisture and using crop varieties that are more adapted to droughts.

OUR APPROACH

SUSTAINABLE MANAGEMENT, CONSERVATION AND RESTORATION OF ECOSYSTEMS

By promoting household and community-based conservation and restorative practices within people's surrounding environment, WFP helps communities build integrated and sustainable approaches to managing their natural resources. Support also includes the creation of assets that can protect ecosystems from climate-related shocks and stressors.

SUCCESS STORY



OUR APPROACH

MARKET ACCESS

By promoting diversified and alternative market access strategies, WFP enables smallholder farmers, artisans, women and youth to consolidate their productive capacities and sell their products. Increased and sustainable access to markets improves people's livelihoods, income and food security. WFP's emphasis on digital market solutions has helped with unforeseen circumstances such as the COVID-19 pandemic.

SUCCESS STORY



预览已结束，完整报告链接和二维码如下：

https://www.yunbaogao.cn/report/index/report?reportId=5_1435

