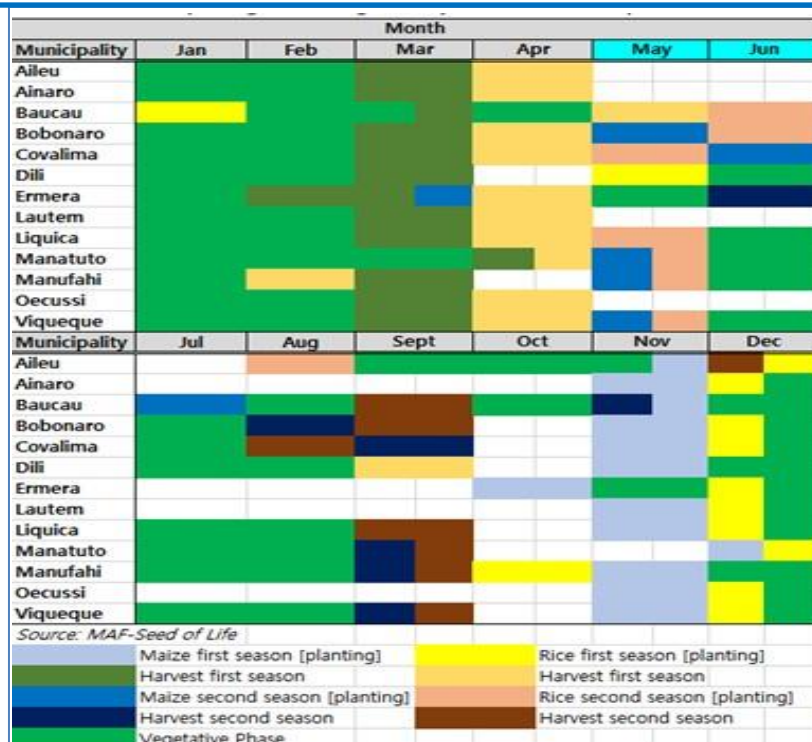


Food Security Bulletin

Edition no. 19 July - September 2020

Page 1



Supervisor : Mr. Jacinto Paijo-CLN
Mr. Justino dos Santo Silva-MAF
Mr. Cristino Gusmão,DGE-MoF
Mr. Gil Rangel da Cruz-MAF

Chief Production: Mr. Rofino S. Gusmão DNSAC-MAF

Editors : Mr. Benjamin Flomo, WFP
Mr. Amaro Ximenes, WFP
Mr. Vasco dos S. Soares, MAF

Contributors :
Mrs. Julieta E. Gusmão, Alfandega-MoF
Mr. Tito da Costa, CLN-MTCI
Mrs. Ermelinda Pires, DNGRD-MI
Mr. Jemi Natalino do Rosario, DGE-MoF
Mr. Mário Morreira, MoH
Mr. Dinis da Silva, MSSI
Mrs. Ivone da C. Lopes-DNSAC-MAF
Mrs. Adelaide da C. Nunes-DNSAC-MAF
Mrs. Rita da Costa Soares, DNPEIG-MAF
Mr. Augusto da Silva, DNQB-MAF
Mrs. Fernanda M. Fátima, DNAHE-MAF
Mrs. Rosantina D. C. Sarmento, DGE-MoF

Highlights

- The national Rice production for 2020 was estimated at 49,983 tonnes, while Maize production was estimated at 77,606 tonnes.
- Based on the Cereal Balance Sheet in Table 1, the availability of both staple food (rice and maize) shows a surplus during the reporting period. However, there are tendencies of decrease in rice and maize stock after the implementation of Cesta Basica (Government Food Basket) in the country as rice and maize commodities are currently been bought and will be distributed to the population before the end of the year as a part of the Cesta Basica programme.
- Although the prices of food commodities remain stable as per the Market Price Monitoring reports, the Consumer Price Index (CPI) shows that both local and imported rice prices increased by 2.5 indexes on average during this quarter (July to September 2020), The global increased in cereal prices significantly affected rice prices.
- The Government and Private sector rice imports for Timor-Leste from July to September 2020 were 25,010 tonnes compared to 44,846 tonnes during the last quarter (April to June 2020). There was a decrease of 19,836 tonnes in imported rice.
- The National Logistic Center (NLC) and MSSI have a total food stock of 30,000 tonnes of imported rice and 541 tonnes of local rice by the end of September 2020.

The Timor-Leste Food Security Bulletin (FSB) is a product of the Ministry of Agriculture and Fisheries (MAF) supported by WFP and FAO supported project on establishing a sustainable National Information and Early Warning System (NIEWS) on Food Security in Timor-Leste. The FSB aimed at reporting and providing information on national and household levels of the food security situation quarterly. This is a MAF led innovation of ensuring the timely delivery of information to the decision-makers and wider stakeholders on the general overview of the food security situation in the country as an early warning to mitigate the impacts of food shortage and hunger. The data sources used for this bulletin included primary and secondary data such as Rapid Assessment of Food Security by MAF in collaboration with development partners, Fill Nutrient Gap (FNG) analysis 2019, satellite and remote sensing data collected by WFP and MAF, food prices data reported by Directorate General of Statistics, importation data collected by Customs, food availability data collected by MAF and the food utility data reported by National Logistic Center, Ministry of Social Solidarity and Inclusion (MSSI) and Civil Protection (CP).



To get copies of this bulletin, please contact
MAF: Food Security Department and
Cooperation. Contact: +67077187885

National Food Supply and Demand 2020

Analysis of food supply and demand indicates that the availability of both staple food (rice and maize) shows a surplus during the reporting period (July -September 2020), as seen in the Cereal Balance Sheet below. However, there are tendencies of decrease in rice and maize stock after the implementation of “Cesta Basica” (Government Minimum Food Basket) in the country as rice and maize commodities are currently bought for distribution to the population as a part of the Cesta Basica programme. The calculation within the Cereals Balance Sheet shows a total surplus of 34,112 tonnes of Rice and 3,556 tons of Maize. The details are described below in Table 1.

Table 1: Calculation of the Cereals Balance Sheet

Descriptions	Rice-MT	Maize-MT
Total Availability 1/	181,909	77,606
Importation (Jan -Sept 2020)	95,357	
Importation forecast (Oct-Dec 2020)	36,569	
Production	49,983	77,606
Total Utilization 2/	147,796	74,050
Food Utilization	137,800	72,800
Food for animals		1,250
Harvest loss	9,996	806
Deficit/Surplus	34,113	3,556
Anticipated commercial import	0	
Anticipated import by government	0	

Calculation of food consumptions for 9 months (January-September 2020) (formula and explanation in 4 and 5)

1/ Rice and Maize production is finalized in 2020

2/ Annual consumption: rice-106 kg and maize 56 kg annually per person for 1.3 million.

Source : MAP-DNAHE,2020

National Food Production

Rice and Maize production

Rice: The national Rice production for 2020 was estimated at 49,983 tonnes. Generally, Baucau and Viqueque have higher rice production during 2020 with a total of 13,167 and 12,831 tonnes, while the least rice production was in Dili, Liquica, Aileu, Lautem, Ainaro, and Manufahi. Table 2 below shows the details on rice production.

Maize: The national maize production for 2020 is nearly at the average expected yield, estimated at 77,606 tonnes. Baucau, Bobonaro, and Covalima have higher maize production during 2020 with a total of 15,175, 11,396, and 9,623 tonnes, while the least maize production was in Dili, Liquica and RAEOA (see Table 2).

Table 2: Rice and Maize Production in 2020 by Municipality

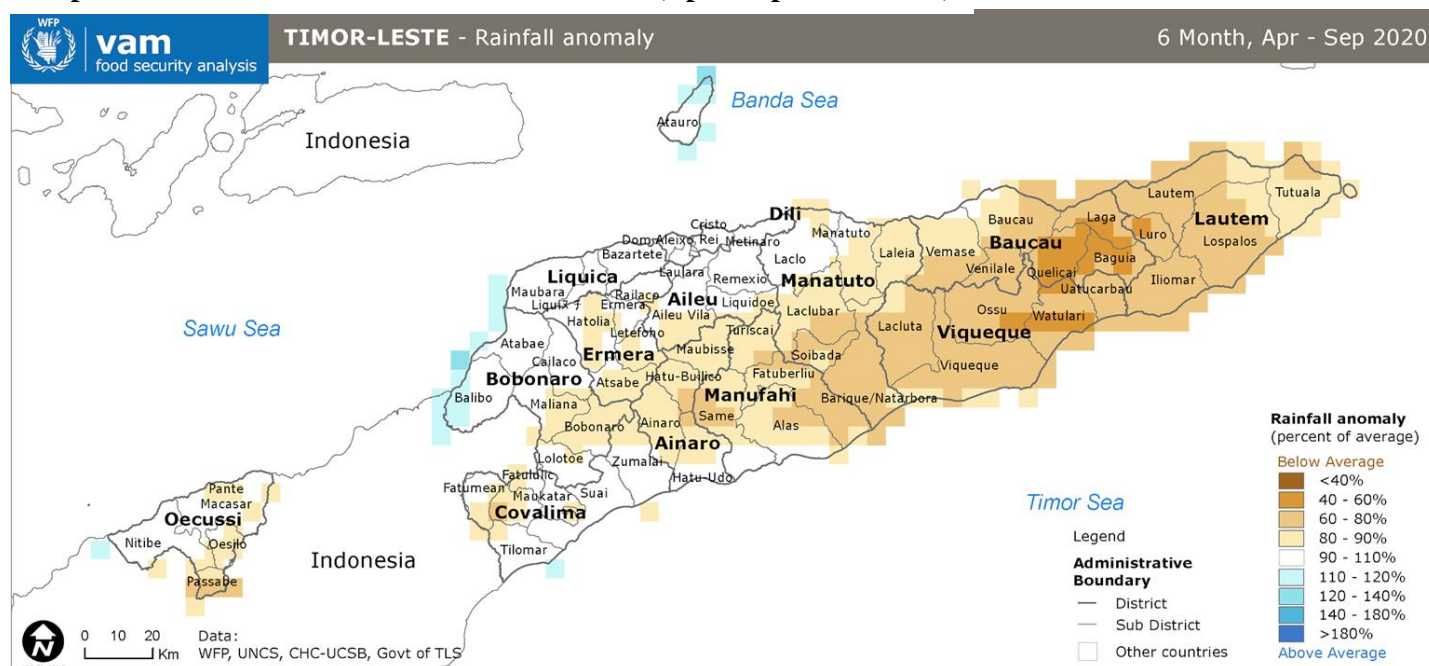
No.	Names of Municipalities	Rice Production	Maize Production
1	Aileu	644	4,205
2	Ainaro	1294	5,030
3	Baucau	13167	15,175
4	Bobonaro	6245	11,396
5	Covalima	5041	9,623
6	Dili	27	547
7	Ermera	1457	4,724
8	Lautem	854	5,304
9	Liquica	234	5,481
10	Manatuto	2970	2,614
11	Manufahi	1389	5,134
12	Oecussi (RAEOA)	3830	3,377
13	Viqueque	12831	4,997
TOTAL ANNUAL PRODUCTION		49,983	77,606

Source: MAP-DNAHE,2020

Summary of climate impact on food production

Rainfall Conditions

Map 1: Rainfall distribution for the last 6 months (April-September 2020)

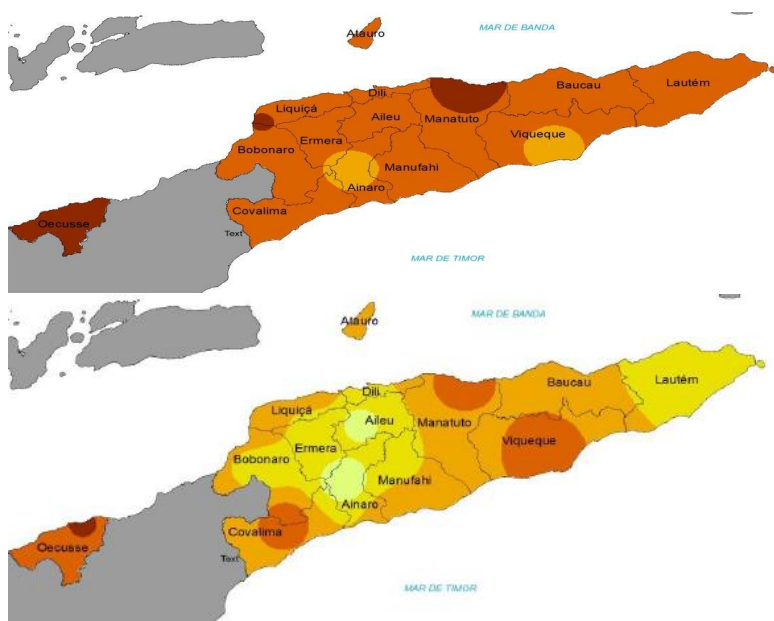


Sources :WFP-VAM

In the last 6 months, from April to September 2020, Timor-Leste generally experienced below-normal rainfall, with several localized rainfall in Liquica, Dili, Bobonaro, Covalima, and the North-East part of Aileu. However, few areas in the Atauro and the West Coast of Bobonaro experienced slightly above normal rainfall from April 11 to 20, 2020.

Most areas in the Eastern part of the country experienced below normal rainfall (around 60 - 90% of the usual amount of rainfall). While only a few areas of Quelicai, Baguia, and Laga in the Baucau District only experienced 40 - 60% rainfall from the normal condition (see Map 1 above).

Map 2: Seasonal Climate Rainfall Forecast (October to December 2020)



October 2020

During October 2020, rainfall varied from below to moderate in Timor Leste with the intensity of 50-10mm/month. In some areas like Viqueque, Ainaro, Covalima, and Ermera experiencing rainfall with an intensity of 100-150 mm/month. In the Oecussi region some areas on the North like Manatuto, Liquica, and Bobonaro show low rainfall of 20 mm/months.

November 2020

In November 2020, rainfall varied significantly compared to October. The central part of Ainaro and Aileu still presents a high intensity of 200-300mm/month. In other Municipalities, the rainfall intensity is still moderate (100-200 mm/month) except for Viqueque, north Manatuto, and Oecussi where rainfall varied from 20-100 mm/Month.



Source: DNGM-Ministerio Infrastrutura

December 2020

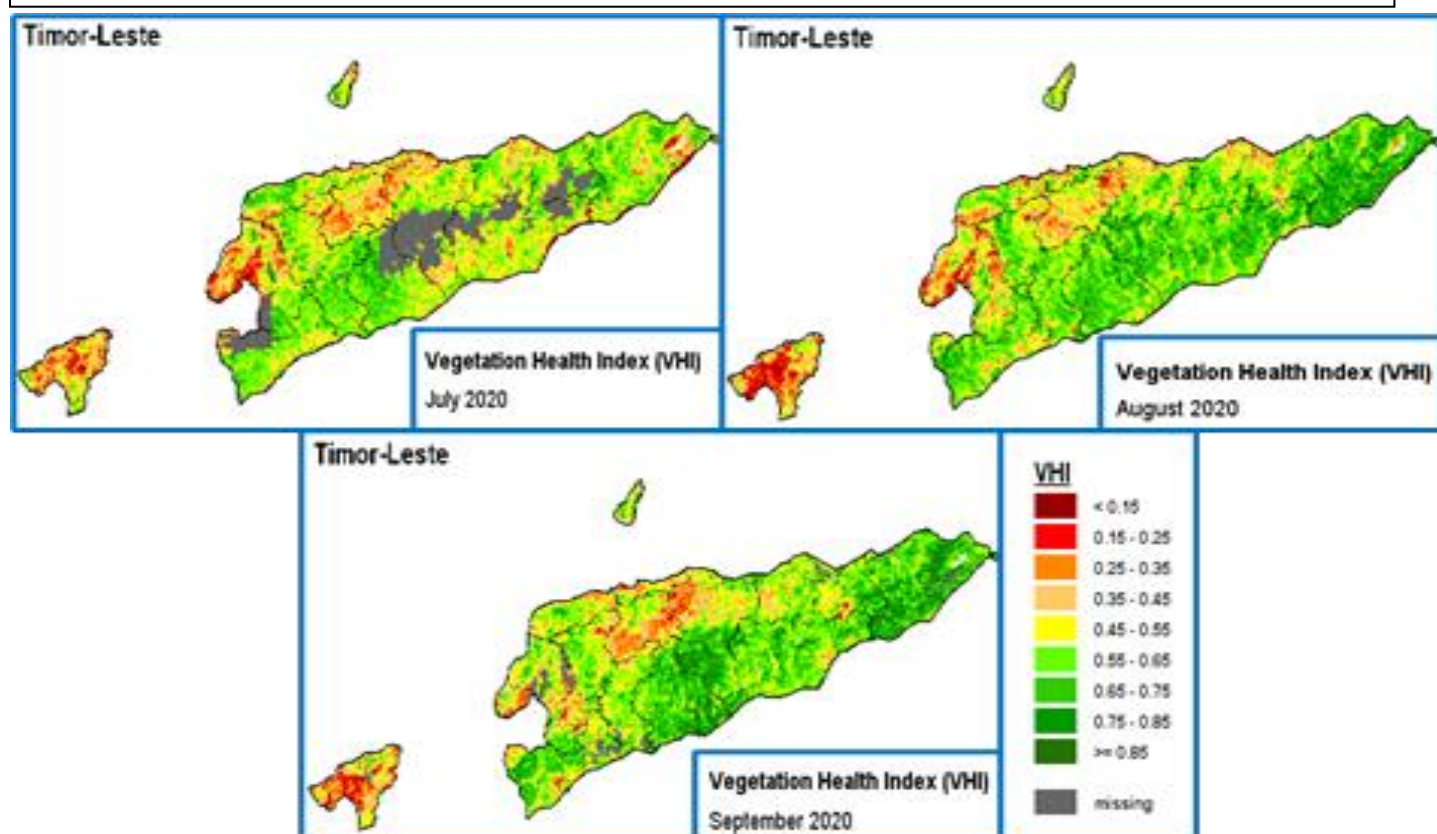
In December 2020, the predation shows that the rainfall will continue to intensify compare to November and October. It is also observed that the majority of Timor-Leste will experience rainfall with intensity varies from 100-300 mm/months. Only Oecussi and other parts in south Manufahi will have rainfall intensity below 20-100 mm/months.

Vegetation Health Index (VHI) conditions

The overall Vegetation Health Index indicates that the level of vegetation was around 0.55 to 0.85 throughout the country from July to September 2020 except Oecussi and another northside of the country has a low vegetation index.

In July 2020, VHI indicates that the level of vegetation was low between 0.15 to 0.55 (red colour) in Oecussi, Dili, Manatuto, Maubara, Baucau Villa, Aileu, Maliana, Atabae, Lospalos, Tutuala and Oecussi. On the north side, the vegetation index shows green (0.65 to 0.85) in Ermera, Ainaro, Covalima, Manufahi, Laclubar, Quelicai, Ossu, and Lautem. While in August to September the vegetation index increased to an index of 0.65 to 0.85 (green) in Southside of Country. However, Oecussi and other northside of the country continue experiencing low vegetation (see Map 3 below).

Map 3: Vegetation Health Index from July to September 2020



Sources: ALGIS-MAP 2020

National Food Importation and Exportation

Importation

Rice Imports: Importation data from Customs shows that the Government and Private Sector rice imports for Timor-Leste from July to September 2020 were 25,010 tonnes compared to 44,846 tonnes during the last Quarter (April to June 2020). There was a decrease of 19,836 tonnes in imported rice (see Table 3 below).

Table 3: Rice importation in Timor-Leste during January 2019-June 2020 (Unit: Tonnes)

Years	Jan	Feb	Mar	Apr	May	Jun	Jul	Aug	Sep	Total
2019	18,431	18,181	17,424	9,042	7,445	1,951	13,776	12,777	9,756	108,783
2020	11,484	4,431	9,583	4,728	21,494	18,627	9580	11640	3790	95,357

Source: Custom-MoF

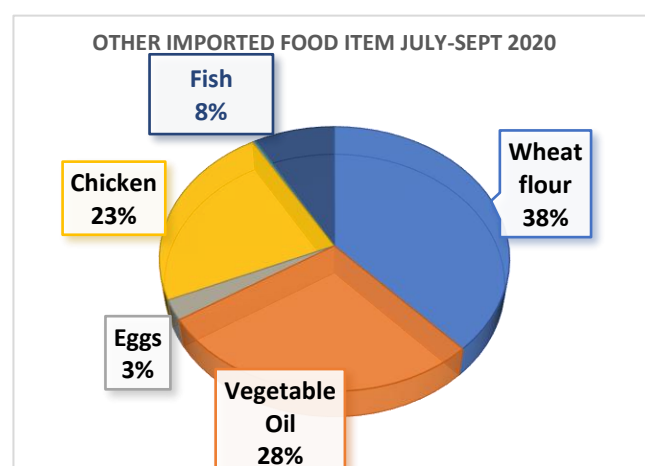
Importation of other Food items: During the last Quarter (July to September 2020), there were also other food items imported such as wheat four, vegetable oil, chickens, eggs, pork, beef, and fish (see Table 4 and Figure 1 below).

Table 4: Total Importation of other food items (Unit: Tonnes)

Food Items	July	Aug	Sep	Total
Vegetable Oil (Liter)	1,545	1,721	593	3,859
Eggs	137	69	205	412
Chicken	1,272	1,286	1,397	3,955
Pork	13	28	27	69
Beef	3	0	1	4
Fish	454	301	257	1,011
Wheat Flour	2,101	1,349	1,784	5,234

Sources: Autoridade Aduaneira

Figure 1: Other imported food items



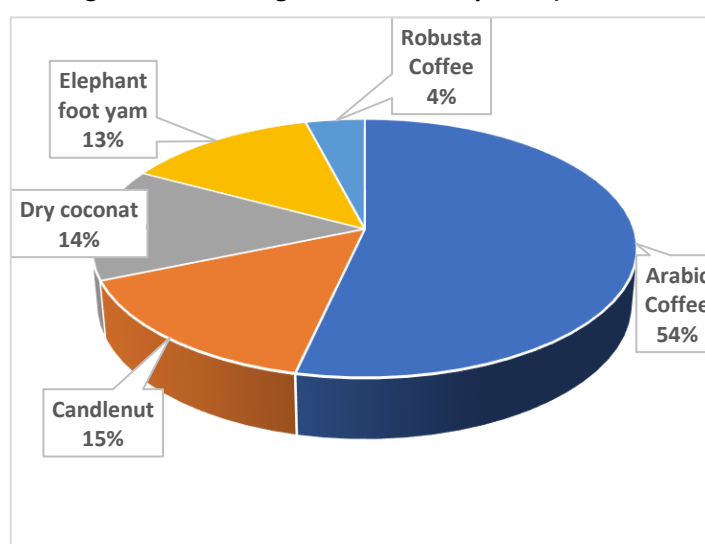
Exportation

In Quarter 3 (July to September 2), Timor-Leste exported 2,860 tonnes of other food items. Food items exported were Arabic Coffee at 1,526 tonnes, Candlenut at 436 tonnes, Dry Coconut at 390 tonnes, Elephant Foot Yam at 366 tonnes, Robusta Coffee at 127 tonnes, Clove at 10 tonnes and Cashew at 5 tonnes. Besides, other small quantities of products that are used for private needs such as Sweet Potatoes at 0 tonnes, and Noni at 0 tonnes were also exported (see Table 5 below). The most exported products to countries are shown in Figure 2 below.

Table 5: Total Exported Product (July-September 2020)

Exported Product	Quantity(Tonnes)	Percentages
Arabic Coffee	1,526	53%
Candlenut	436	15%
Dry Coconut	390	14%
Elephant foot yam	366	13%
Robusta Coffee	127	4%
Clove	10	0%
Cashew	5	0%
Sweet Potatoes	0	0%
Noni	0	0%
TOTAL	2,860	100%

Figure 2: Percentages of Product Exported)



Sources : DNQB-MAP 2020

Availability and Distribution of Rice (January to September 2020)

National Logistic Centre (NLC)

NLC is an institution responsible for the management and distribution of rice in Timor Leste. From January to September 2020, NLC purchased and stored within CLN and MSSSI warehouses 541 tonnes of local rice and 30,000 tonnes of imported rice from Vietnam. With the existing stock, NLC will continue to distribute the rice to relevant Government Ministries for market interventions and humanitarian assistance (see Table 6 below).

Table 6: Accumulation of rice distributions to line ministries between January to September 2020

No	Types of Intervention	Quantities/Sack	Tonnes/Kg
1	Delivering assistance to Civil Protection	5,829	145,725
2	Humanitarian assistance to MSSSI	7,670	191,750
3	Humanitaria assistance to educación	200	5000
4	Assistance for vulnerable commodities	189	4,725
5	Assistance to Police UFP-Maliana	366	9,159
6	Humanitaria assistance to vulnerable families RAEOA/DILI	1,200	30,000
7	Humanitaria assistance to vulnerable families - Kendara Ana/Atauro	50	1,250
TOTAL INTERVENTION		15,504	387,609

Source: National Logistic Centre (CLN), 2020

Ministry of Social Solidarity and Inclusion (MSSI)

Ministry of Social Solidarity and Inclusion (MSSI) through the National Directorate of Social Assistance (DNAS), is responsible for delivering rice to vulnerable groups in Timor Leste. In general, the rice received by the NLC was distributed to victims of disaster, vulnerable families, and hospitals. In Quarter 3 (July-September 2020), rice distributed to the vulnerable groups was 36.5 tonnes. This assistance has decreased to a total of 50.2 tonnes as compared to Quarter 2 (April-June 2020) see Table 7 below.

Table 7: Rice Distribution to Vulnerable Families and Groups (July-September 2020)

Category of Groups	Total (Tones)	Total (Sacs)
Vulnerable groups	4.15	166
CSSI Municipality	28	1,100
Religious institutions	1.10	44
Other needs	3.75	150
Total	37	1,460

Sources: -DNAS - MSSI, 2020

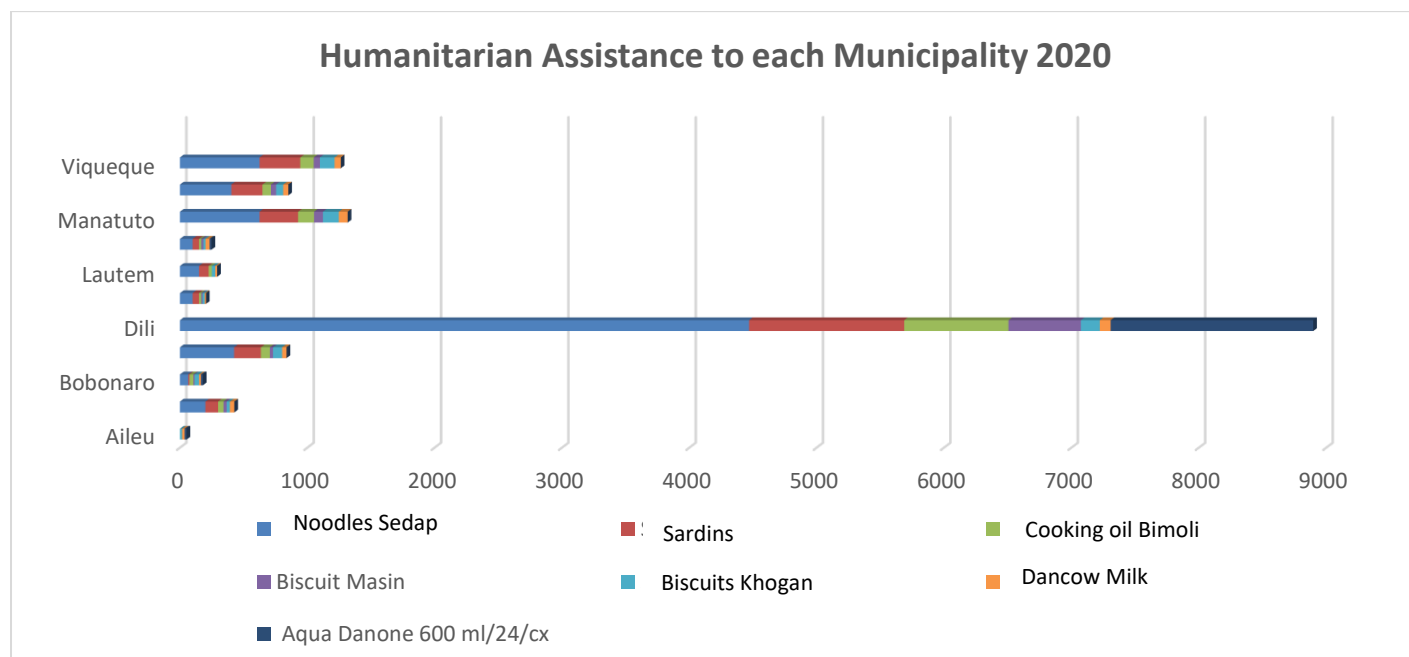
Ministry of Interior – Secretary of Civil Protection

Ministry of Interior through the Secretary of Civil Protection is one of the Government Agencies responsible for delivering food to disaster victims in Timor Leste. From January to September 2020, a total of 41.87 tonnes of rice out of the 145 tonnes received from the National Logistic Center (NLC) has been distributed to disaster victims by Civil Protection (CP). The rice was distributed mainly in municipalities as shown in Table 8. As seen in Figure 3 below, most of the food items were distributed to disaster victims in Dili Municipality than in any other disaster-affected areas in the country.

Table 8: distribution of rice to natural disaster affected areas by municipality 2020.

Municipality	Viqueque	Lautem	Covalima	Manufahi	Baucau	Manatuto	Liquica	Total
Sacs	450	150	275	100	100	300	80	1,555
tones	11.45	3.82	7.00	2.54	2.54	7.63	2.04	39.57

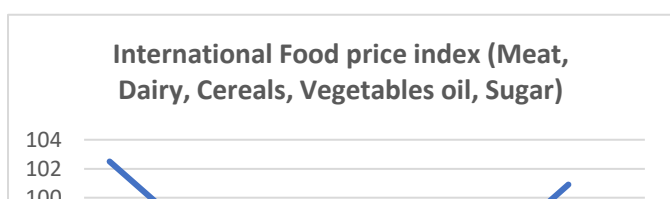
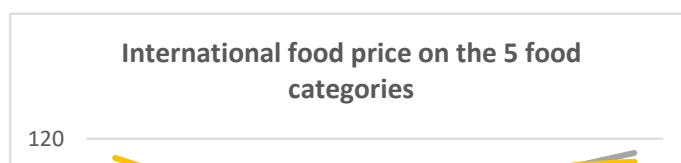
Source: Ministry of Interior – Secretary of Civil Protection

Figure 3: Food Items Distribution to Natural Disaster Affected Areas (January to September 2020)

Source: Ministry of Interior – Secretary of Civil Protection

International Food Price

According to the FAO Food Price Index, the prices of five category food commodities (Meat, Dairy, Cereals, Vegetable oil, and Sugar) sharply increased significantly around 90 to 100 Price Index from June to September 2020, as compared to January to May 2020 when the prices dropped from 100 to 90 (see Figure 4). As seen in Figure 5, Cereals prices increased fluctuated from January to June, and the cereals prices started to increase significantly from July to September 2020. All food category prices increased except for only meat's price decreased slightly from July to September 2020.

Figure 4: FAO International Food Price Index**Figure 5: Food Price based on 5 food categories**

预览已结束，完整报告链接和二维码如下：

https://www.yunbaogao.cn/report/index/report?reportId=5_2501

