









SAVING
LIVES
CHANGING
LIVES

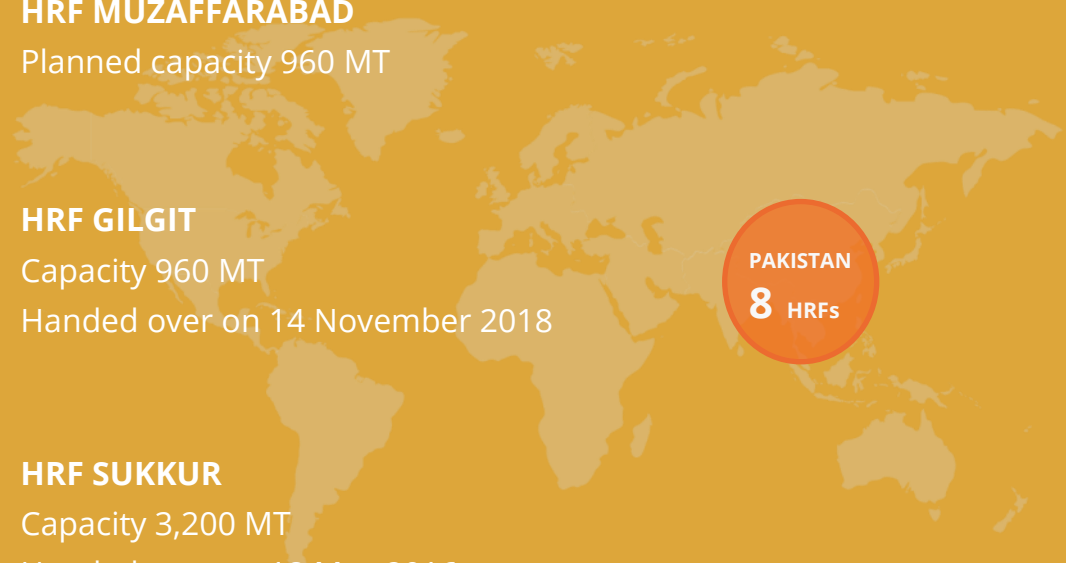


Humanitarian Response Facilities (HRF) in Pakistan

Humanitarian Response Facilities (HRF)

Overview

- Upcoming Project**

HRF MUZAFFARABAD
Planned capacity 960 MT
- 2018 Completed**

HRF GILGIT
Capacity 960 MT
Handed over on 14 November 2018
- 2016 Completed**

HRF SUKKUR
Capacity 3,200 MT
Handed over on 18 May 2016
- 2015 Completed**

HRF PESHAWAR
Capacity 4,400 MT
Handed over on 19 May 2015
- 2015 Completed**

HRF LAHORE
Capacity 4,400 MT
Handed over on 7 May 2015
- 2015 Completed**

HRF HYDERABAD
Capacity 2,160 MT
Handed over on 15 April 2015
- 2014 Completed**

HRF QUETTA
Capacity 4,400 MT
Handed over on 9 June 2014
- 2014 Completed**

HRF MUZAFFARGARH
Capacity 3,200 MT
Handed over on 20 February 2014



The construction of **HRFs** in Pakistan is in response to **natural disasters**

	EARTHQUAKE
FLOOD	
	DROUGHT
LANDSLIDE	



WFP ENGINEERING
Building for a sustainable future



PROJECT BACKGROUND

Pakistan ranks number eight among the most affected countries as per the Climate Risk Index for the period 1998-2017. It is exposed to natural hazards such as floods, droughts, earthquakes and landslides.

In 2005, a high magnitude earthquake caused the greatest destruction and loss recorded in the country's history with 6,700 people killed. In 2010, unprecedented flooding affected the entire length of the country, devastating 78 districts and affecting over 20 million people. The same happened in 2011, when severe flooding affected 9.6 million people.

Natural disasters have been recorded on a yearly basis. Therefore, it is important that disaster risk management is applied across the country.

During the flood disaster in 2010, the Government of Pakistan did not have an adequate logistic system in place to provide timely response to the affected people. The biggest challenge was the lack of central warehouse infrastructure at provincial level for the pre-positioning of contingency stocks.

To enhance the emergency response capacity, WFP developed Humanitarian Response Facilities (HRF), i.e. warehouse spaces to be used for pre-positioning of food and non-food items which function as the starting point of emergency response and relief activities. The project was implemented in close coordination with the National Disaster Management Authority (NDMA) and the Provincial Disaster Management Authorities (PDMAs).



MANAGEMENT

The project was managed by WFP Pakistan and led by the Supply Chain unit. WFP Engineering provided support in the design and construction components of the project as well as manpower, such as engineers and site inspectors. Warehouse design and site supervision was undertaken by design consultants, whilst construction was carried out by national construction companies.

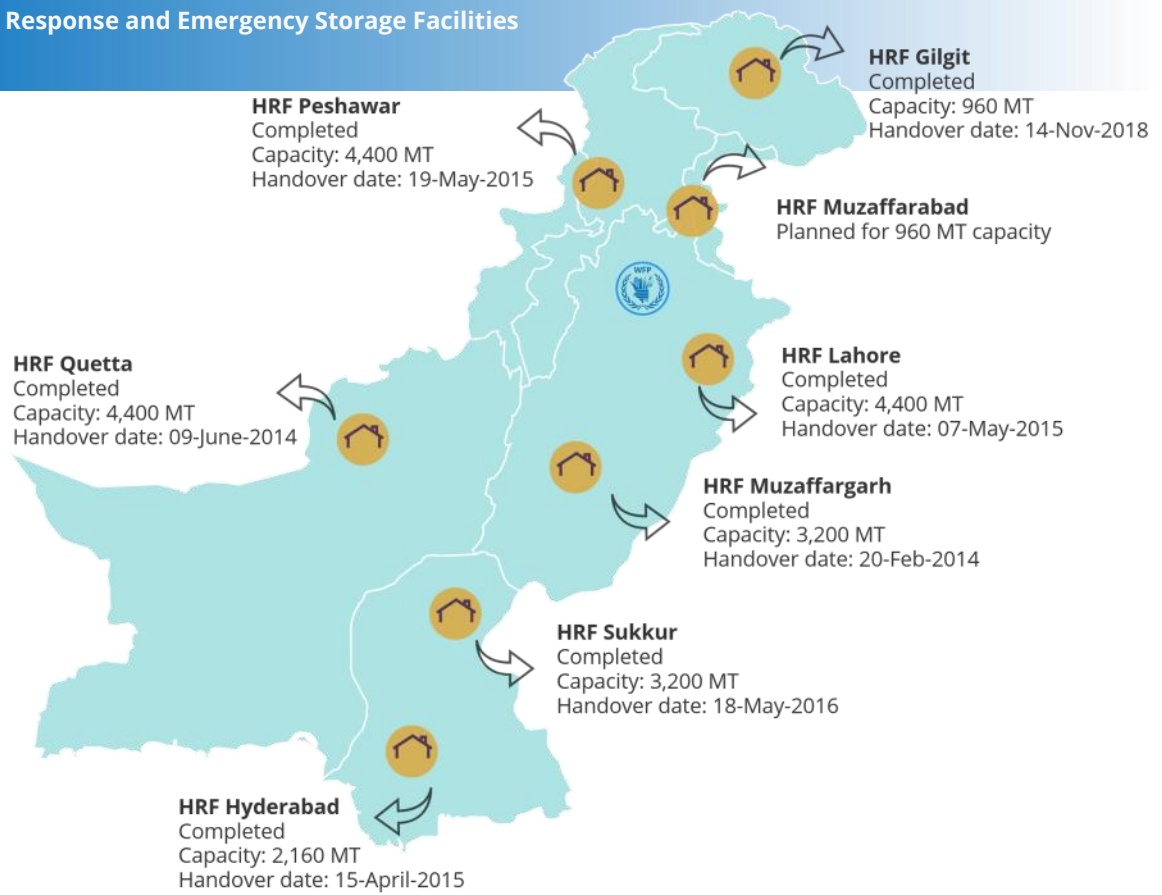
WFP Pakistan has worked in close collaboration with the Government of Pakistan, NDMA and PDMA to ensure compliance with the functional and legislative requirements. Once completed, the HRFs were handed over to respective PDMA assuming full responsibility for operation, management and maintenance. In order to perform properly, WFP Pakistan has developed a commodity tracking system for the NDMA and PDMA to strengthen their stock and warehouse management. WFP Pakistan provided comprehensive end-to-end supply chain, facility management and maintenance training for over 600 Government staff to carry out warehouse operations in an effective manner.

PROVINCE WISE BREAKDOWN OF EMERGENCY STORAGE FACILITY AND HRF CAPACITY (MT)				
Province	Number of Emergency Storage Facility	Capacity (MT)	Number of Completed HRF	Capacity (MT)
Punjab	11	2,200	2	7,600
Sindh	10	2,000	2	5,360
Balochistan	11	2,200	1	4,400
KP	7	1,400	1	4,400
ICT	6	1,200	-	-
AJ&K	4	800	-	-
Gilgit Baltistan	3	600	1	960
Total	52	10,400	7	22,720

Province Wise Breakdown of Emergency Storage Facility and HRF Capacity

PAKISTAN WAREHOUSE NETWORK MAP—2019

Humanitarian Response and Emergency Storage Facilities



PROJECT SITES

Responding to natural disaster challenges, in 2012 WFP and the Government of Pakistan decided to invest in the construction of eight Humanitarian Response Facilities located in six provinces across the country: Punjab, Sindh, Baluchistan, Khyber Pakhtunkhwa (KPK), Gilgit Baltistan and Muzaffarabad (AJK).

The HRF concept enables the authorities to prepare for a rapid and coordinated emergency response to future disaster by pre-positioning food and non-food contingency stocks close to potential emergency areas, aiming to save lives and reduce vulnerabilities of disaster victims.

Since December 2018, WFP Pakistan has constructed seven HRF networks across Pakistan. Those in Muzaffargarh, Quetta, Lahore, Hyderabad, Peshawar, Sukkur and Gilgit have been completed and handed over to respective PDMA. The Muzaffarabad project is still pending, due to current funding constraints.

In general, all facilities have been designed to include the following:

- Warehouse space, ranging from 960 sqm to 4,400 sqm for a total storage of 22,720 MT.
- Open yards, for storage of up to 15,000 MT and vehicle parking between 1,000 and 3,000 sqm.
- Security measures, such as access points, fences, security lights, firefighting equipment, independent water and sewerage system etc.
- Energy efficiency systems, such as solar lights with PV modules etc.
- Warehouse equipment i.e. steel racking, forklifts, plastic pallets, backup generators etc.

HRF MUZAFFARGARH

Despite extreme weather at the beginning of the construction, the HRF in Muzaffargarh was completed on time in February 2014. The construction has a capacity of 3,200 MT. HRF Muzaffargarh was the first HRF constructed by WFP Pakistan. The total cost of the construction was US \$3 million. The hub has helped the Government of Pakistan to prepare for and find relief from several natural disasters such as severe drought in the Barani area of Punjab.



Humanitarian Response Facilities (HRF) in Muzaffargarh.

Photo: WFP Pakistan



Humanitarian Response Facilities (HRF) in Quetta

Photo: WFP Pakistan

HRF QUETTA

A 7.7 magnitude earthquake struck Baluchistan region in 2013 leaving thousands of houses flattened, hundreds of people dead and thousands of people without homes. Due to this area being disaster-prone, WFP and the Government of Pakistan completed the second HRF in Quetta on 9 June 2014. It provides 4,400 MT storage capacity for food and non-food items. The total cost of the construction was US \$4 million. The hub also includes open yards, parking spaces, security measures and an energy efficiency system. Since its inauguration, the HRF has supported country office and logistic operations in providing effective and reliable storage facilities in response to emergency.



HRF HYDERABAD

Following the successful completion of HRFs in

预览已结束，完整报告链接和二维码如下：

https://www.yunbaogao.cn/report/index/report?reportId=5_4528



云报告
https://www.yunbaogao.cn

云报告
https://www.yunbaogao.cn

云报告
https://www.yunbaogao.cn