

Helping countries increase climate resilience to achieve Zero Hunger



WFP works with partners to design and implement programming tools to increase climate resilience, employing integrated climate risk management, disaster risk reduction and climate adaptation approaches. WFP's aim is to allow food insecure communities, institutions and governments to prepare for, respond to and recover from climate shocks.

<https://www1.wfp.org/publications/2017-wfp-and-climate-change-0>

Also check out our animated video on [Climate Change](#)



What a 2°C and 4°C warmer world could mean for global food insecurity



A 2°C warmer world could mean that 189 million people could experience levels of vulnerability to food insecurity greater than in the present day, while the number reaches 1.8 billion in a 4°C warmer world.

<https://www.wfp.org/content/2017-2-and-4-degrees-infographic>



How WFP is supporting Global Climate Action

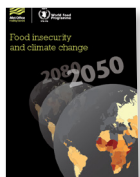


Climate-related disasters are increasing the risk of hunger and the breakdown of food systems. WFP helps build the climate resilience of the world's most food insecure populations, most of whom live in fragile, disaster-prone areas.

<https://www.wfp.org/content/two-minutes-climate-change-and-hunger>



Food Insecurity and Climate Change Map



The Food Insecurity and Climate Change Vulnerability Index is an interactive tool that offers a window into our future by identifying how climate change may affect vulnerability to food insecurity by 2050 and up to 2080.

<https://www.wfp.org/content/2015-food-insecurity-and-climate-change-map>



Climate Change and Conflict

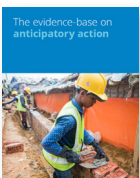


Climate Change acts as a risk multiplier, exacerbating vulnerabilities especially in parts of the world which are prone to social tensions. This factsheet shows how WFP climate action is contributing to improving the prospects for peace.

<https://www.wfp.org/publications/climate-change-and-conflict>



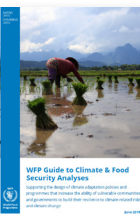
The evidence-base on anticipatory action



This paper reviews the evidence base on anticipatory action emerging from Forecast-based Financing and other related initiatives implemented in recent years. It proposes three critical steps for the implementing actors in order to arrive at a more coherent and unified evidence base.



WFP Guide to Climate and Food Security Analyses



Climate and food security analyses are an important first step to identify the most appropriate policies and programmes to be considered when designing a climate change adaptation intervention. This guidance explains the different types of climate analyses and methodologies to conduct them.

<https://www.wfp.org/publications/2019-guide-climate-and-food-security-analyses>





Under the Climate Adaptation Management and Innovation Initiative (C-ADAPT), WFP conducted a number of innovative climate analyses with partners to enhance knowledge of climate risk impacts on food security and nutrition and identify best adaptation practices to inform policy and planning at national level.



WFP has produced a compendium on “How Climate Drives Hunger” and that provides a summary of climate analyses produced since 2010.

- Asia and Pacific: Afghanistan, Cambodia, Laos, Nepal, Philippines, Regional study, Sri Lanka, Timor-Leste
- Eastern and Central Africa: Ethiopia
- West Africa: Mali, Senegal
- Middle East, North Africa, Eastern Europe and Central Asia: Egypt, Kyrgyz Republic, Regional study, South Sudan, Sudan, Tajikistan

These analyses are also available on WFP’s website along with access to different climate analysis methodologies

<https://www.wfp.org/content/2017-how-climate-drives-hunger>



R4 Rural Resilience Initiative

WFP and Oxfam America’s R4 Rural Resilience Initiative is a comprehensive risk management approach that helps vulnerable rural households increase their food and income security in the face of increasing climate-related risks.

<https://www.wfp.org/content/r4-rural-resilience-initiative>

Also check out our [animated video on R4](#)



ARC Replica

This is an insurance product offered by ARC Ltd to WFP and other humanitarian partners as an innovative approach to expand climate risk insurance coverage to more people and improve the effectiveness of emergency humanitarian response in vulnerable African countries.

<https://www.wfp.org/content/2018-arc-replica>

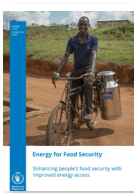


Climate Services

WFP supports communities and governments reducing their vulnerability to climate change and making better decisions through the provision of tailored climate and weather information.

<https://www.wfp.org/content/2015-climate-services>

Also check out our [animated videos on Climate Services](#)



Energy for Food Security

WFP’s efforts to achieve zero hunger can be strengthened by providing the energy beneficiaries need for producing, transforming and consuming food, which will enhance both their food security and nutrition. Find out more on how people’s food security can be enhanced with improved energy access.

<https://www.wfp.org/publications/energy-food-security>



Forecast-based financing: moving from crisis response to risk management

This is an innovative mechanism whereby early preparedness and community level actions are pre-planned based on credible forecasts. These actions minimize losses and damage caused by climate hazards, and reduce the need for humanitarian assistance in their aftermath.

<https://www.wfp.org/publications/forecast-based-financing-fbf-anticipatory-actions-food-security-2019>



我们的产品



大数据平台

国内宏观经济数据库

国际经济合作数据库

行业分析数据库

条约法规平台

国际条约数据库

国外法规数据库

即时信息平台

新闻媒体即时分析

社交媒体即时分析

云报告平台

国内研究报告

国际研究报告

预览已结束，完整报告链接和二维码如下：

https://www.yunbaogao.cn/report/index/report?reportId=5_5494

