



Health Canada Santé Canada



World Health Organization

# CLIMATE CHANGE AND HEALTH

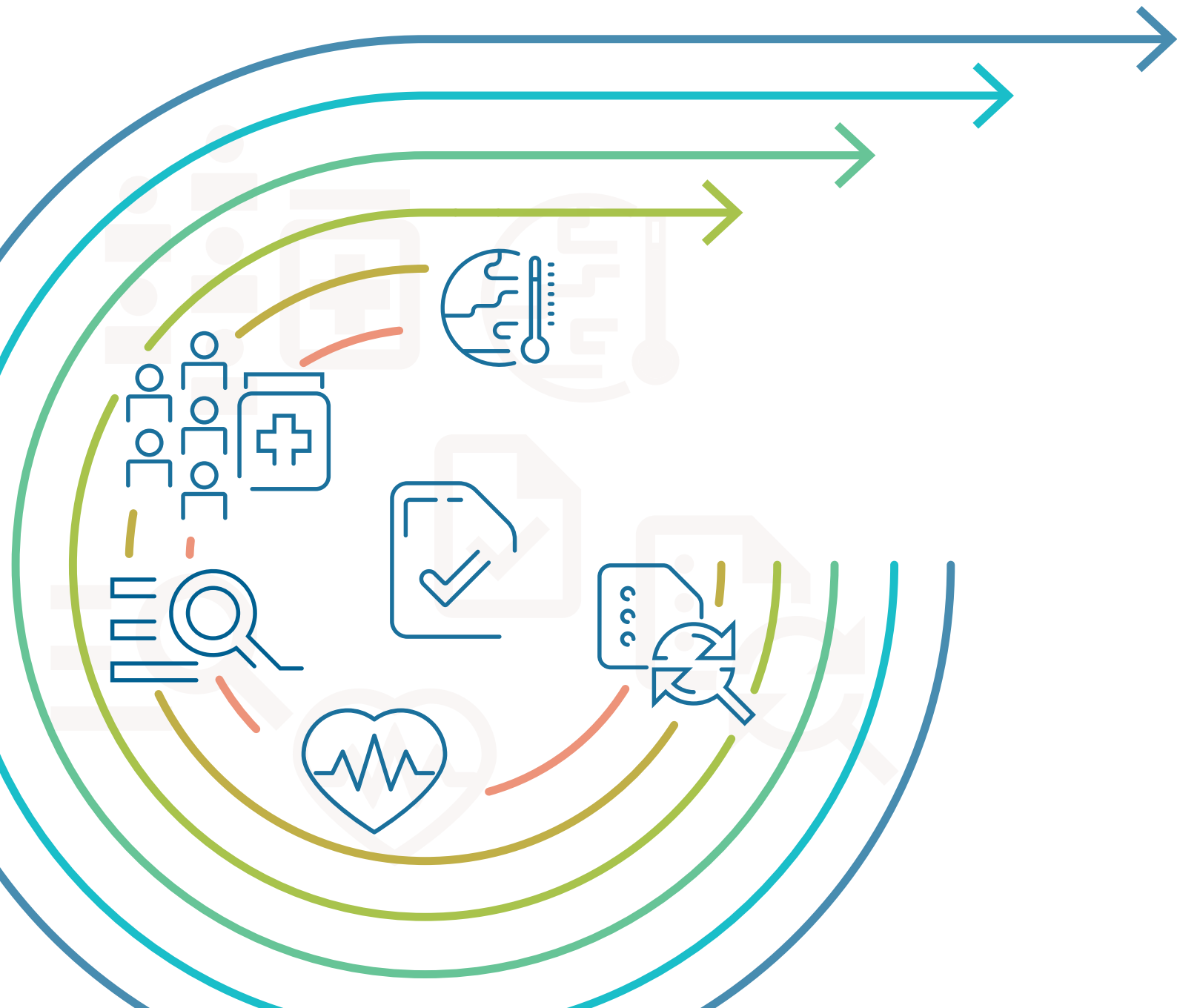
## VULNERABILITY AND ADAPTATION ASSESSMENT





# CLIMATE CHANGE AND HEALTH

## VULNERABILITY AND ADAPTATION ASSESSMENT



Climate change and health vulnerability and adaptation assessment

This publication is the update of the document published in 2013 entitled *Protecting health from climate change: vulnerability and adaptation assessment*.

ISBN 978-92-4-003638-3 (electronic version)

ISBN 978-92-4-003639-0 (print version)

**© World Health Organization 2021**

Some rights reserved. This work is available under the Creative Commons Attribution-NonCommercial-ShareAlike 3.0 IGO licence (CC BY-NC-SA 3.0 IGO; <https://creativecommons.org/licenses/by-nc-sa/3.0/igo>).

Under the terms of this licence, you may copy, redistribute and adapt the work for non-commercial purposes, provided the work is appropriately cited, as indicated below. In any use of this work, there should be no suggestion that WHO endorses any specific organization, products or services. The use of the WHO logo is not permitted. If you adapt the work, then you must license your work under the same or equivalent Creative Commons licence. If you create a translation of this work, you should add the following disclaimer along with the suggested citation: "This translation was not created by the World Health Organization (WHO). WHO is not responsible for the content or accuracy of this translation. The original English edition shall be the binding and authentic edition".

Any mediation relating to disputes arising under the licence shall be conducted in accordance with the mediation rules of the World Intellectual Property Organization (<http://www.wipo.int/amc/en/mediation/rules/>).

**Suggested citation.** Climate change and health vulnerability and adaptation assessment. Geneva: World Health Organization; 2021. Licence: CC BY-NC-SA 3.0 IGO.

**Cataloguing-in-Publication (CIP) data.** CIP data are available at <http://apps.who.int/iris>.

**Sales, rights and licensing.** To purchase WHO publications, see <http://apps.who.int/bookorders>. To submit requests for commercial use and queries on rights and licensing, see <https://www.who.int/about/policies/publishing/copyright>.

**Third-party materials.** If you wish to reuse material from this work that is attributed to a third party, such as tables, figures or images, it is your responsibility to determine whether permission is needed for that reuse and to obtain permission from the copyright holder. The risk of claims resulting from infringement of any third-party-owned component in the work rests solely with the user.







**General disclaimers.** The designations employed and the presentation of the material in this publication do not imply the expression of any opinion whatsoever on the part of WHO concerning the legal status of any country, territory, city or area or of its authorities, or concerning the delimitation of its frontiers or boundaries. Dotted and dashed lines on maps represent approximate border lines for which there may not yet be full agreement.

The mention of specific companies or of certain manufacturers' products does not imply that they are endorsed or recommended by WHO in preference to others of a similar nature that are not mentioned. Errors and omissions excepted, the names of proprietary products are distinguished by initial capital letters.

All reasonable precautions have been taken by WHO to verify the information contained in this publication. However, the published material is being distributed without warranty of any kind, either expressed or implied. The responsibility for the interpretation and use of the material lies with the reader. In no event shall WHO be liable for damages arising from its use.

Editing, design and layout by Inis Communication

# Contents

iv	<b>Preface</b>
v	<b>Acknowledgements</b>
vi	<b>Abbreviations</b>
vii	<b>Glossary</b>
1	<b>Introduction</b>
5	<b>Objectives</b>
7	<b>Background on health risks of climate variability and change</b>
11	<b>Framework for assessing vulnerability and adaptation</b>
15	<b>Using this guidance to conduct a vulnerability and adaptation assessment</b>
19	<b>Vulnerability and adaptation assessment steps</b>
19	 <b>STEP 1</b> Getting started: plan the assessment
28	 <b>STEP 2</b> Vulnerability assessment: describe the current burden of climate-sensitive health outcomes and vulnerabilities to climate variability and recent climate change
38	 <b>STEP 3</b> Capacity assessment: Assess the capacities of health and health-relevant systems
43	 <b>STEP 4</b> Future risk assessment: qualitatively and/or quantitatively project the health risks of climate change
47	 <b>STEP 5</b> Adaptation assessment: Identify and prioritize policies, programmes and actions to address current and projected health risks
57	 <b>STEP 6</b> Synthesize the assessment as input into relevant climate change and health policies, plans, and reporting mechanisms
63	<b>Conclusions</b>
65	<b>References</b>

## Preface

In 2013 the World Health Organization (WHO) published the report *Protecting health from climate change: vulnerability and adaptation assessment*. The aim was to provide basic and flexible guidance on conducting national or subnational assessments of current and future vulnerability (the susceptibility of a population or region to harm) to the health risks of climate change, and of policies and programmes that could increase resilience, taking into account the multiple determinants of climate-sensitive health outcomes.

That guidance has been a very useful tool, applied to more than 50 countries and settings, and has helped countries to prepare their health contributions to United Nations Framework Convention on Climate Change national adaptation plans.

Since the launch of the guidance, WHO, technical partners such as Health Canada, and countries have learned much in terms of its applicability in different countries, at national and local levels. At the same time, knowledge on climate change and health has increased.

WHO, the Pan American Health Organization and Health Canada have produced this updated version, which aims to better support countries in their assessments by proposing a simpler tool that incorporates all lessons learned.

# Acknowledgements

This document is based on, and updates, the World Health Organization (WHO) 2013 report *Protecting health from climate change: vulnerability and adaptation assessment*. It represents the work and contributions from experts in WHO, the Pan American Health Organization (PAHO) and Health Canada. WHO extends its gratitude to Health Canada for financial and technical support in developing this document.

The document was written by Kristie Ebi (University of Washington), Peter Berry (Health Canada), Carlos Corvalan (University of Sydney), Aderita Sena (WHO), Marielle Verret (Health Canada), Elena Villalobos Prats (WHO), Laura Scheske (World Meteorological Organization), Joy Shumake-Guillemot (World Meteorological Organization), Lucia Fernandez Montoya (World Meteorological Organization and WHO), Daniel Buss (PAHO), Anwar Mendez (PAHO) and Diarmid Campbell-Lendrum (WHO).

WHO extends its thanks to the following reviewers and contributors: Timothy Bouley (BioFeyn), Sally Edwards (PAHO), Sherilee Harper (University of Alberta), Dorota Jarosinka (WHO Regional Office for Europe), Vladimir Kendrovski (WHO Regional Office for Europe), Mary Manandhar (WHO), and Rebekka Schnitter (Health Canada). Case study contributions were received from: Esther Onyango (WHO), Amy Savage (WHO), Arthur Wyns (WHO), Mazen Malkawi (WHO Regional Office for Eastern Mediterranean), Mona Khaleghy Rad (WHO Country Office, Iran (Islamic Republic of)), Mohammad Rahimi (Semnan University, Iran (Islamic Republic of)), Fatima Thneibat (Ministry of Health, Jordan), Rachid Wahabi (Ministry of Health, Morocco).

# Abbreviations

<b>GIS</b>	geographical information systems
<b>HNAP</b>	health national adaptation plan
<b>IPCC</b>	Intergovernmental Panel on Climate Change
<b>M&amp;E</b>	monitoring and evaluation
<b>NAMA</b>	nationally appropriate mitigation actions
<b>NAP</b>	national adaptation plan
<b>NDC</b>	nationally determined contributions
<b>PAHO</b>	Pan American Health Organization
<b>RCP</b>	representative concentration pathway
<b>UNFCCC</b>	United Nations Framework Convention on Climate Change
<b>V&amp;A</b>	vulnerability and adaptation assessment
<b>WHO</b>	World Health Organization

预览已结束，完整报告链接和二维码如下：

[https://www.yunbaogao.cn/report/index/report?reportId=5\\_23577](https://www.yunbaogao.cn/report/index/report?reportId=5_23577)

